

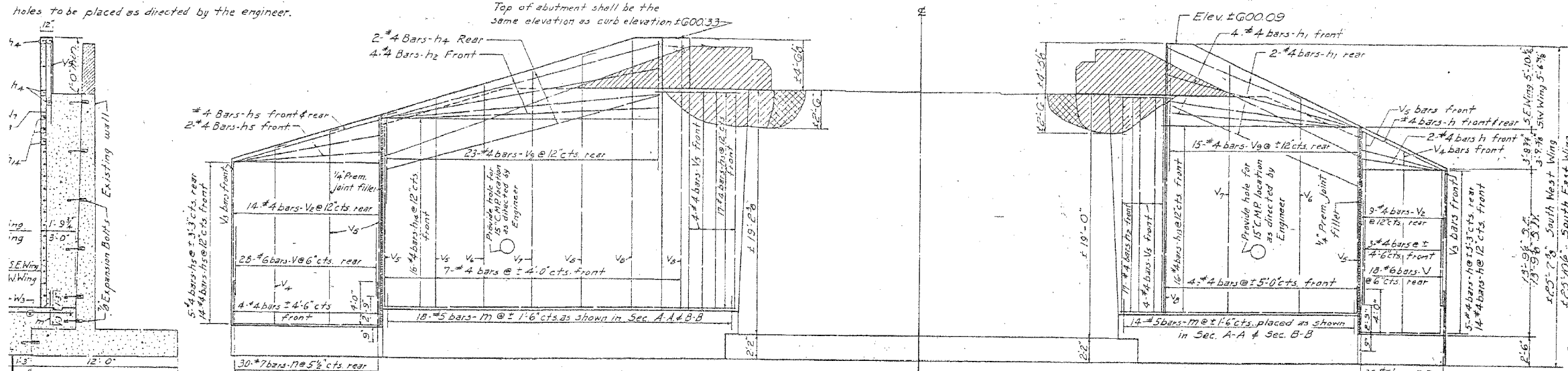
FAP NO.	SECTION	COUNTY	TOTAL SHEETS	SHEET NO.
338	114 BY-R-1	WILL	139	99
STA.	TO STA.			
FED. ROAD DIST. NO.	ILLINOIS	FAP 338 (ILL. RTE. 59)		

atched areas show the portions of the existing structure which shall be removed by the contractor. Exposed steel shall be cut off. The work shall be paid for per cu. yd. as its removal. Estimated 62 cu. yd.
 hatched area indicates portions of existing structure to be removed in concrete and then grouted as directed by the engineer.

STATE OF ILLINOIS
 DEPARTMENT OF PUBLIC WORKS & BUILDINGS
 DIVISION OF HIGHWAYS

DATE	SECTION	COUNTY	TOTAL SHEETS	SHEET NO.
11/23/59	114BY	WILL	14	9
7 SHEETS				

holes to be placed as directed by the engineer.

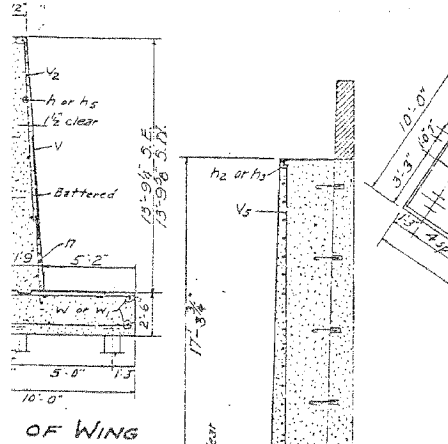


SECTION B-B

ELEVATION SHOWING REINFORCEMENT IN FRONT & REAR FACES

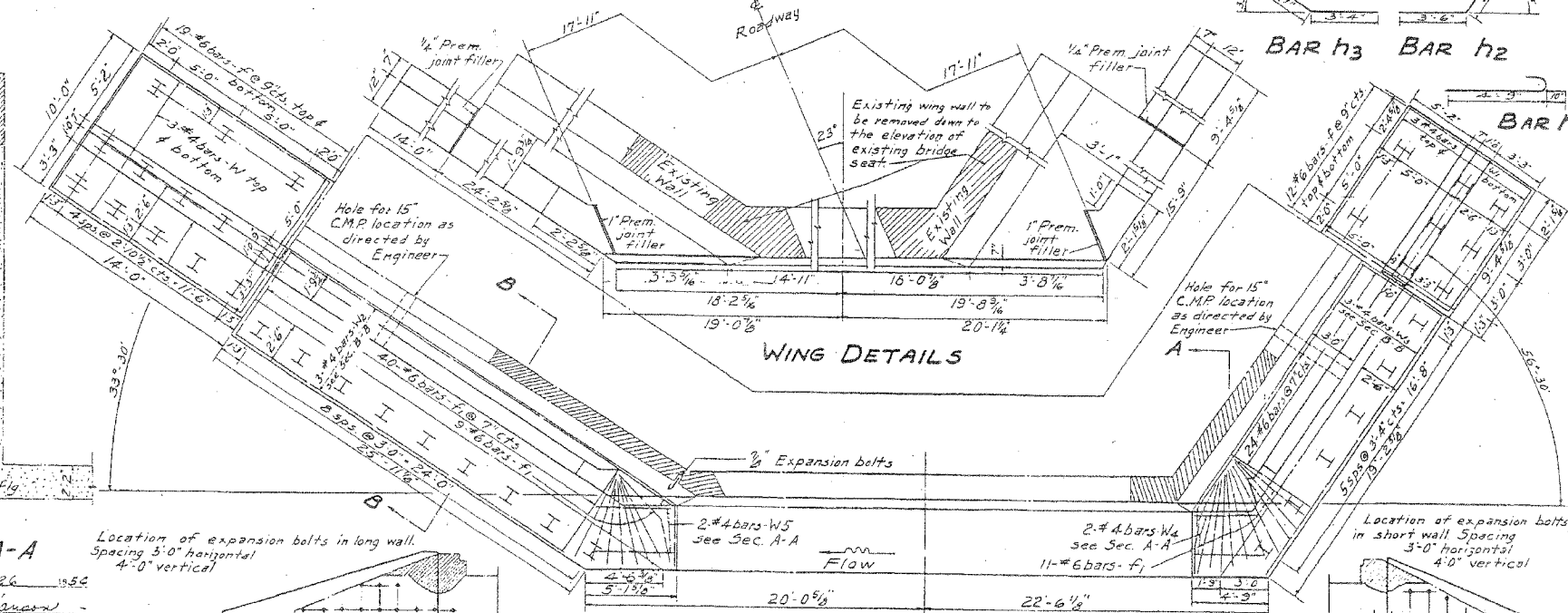
BILL OF MATERIAL

Bar No.	Size	Length	Shape
f	#6	9'-6"	
f1	#6	5'-9"	
h	#4	9'-0"	
h1	#4	15'-6"	
h2	#4	7'-4"	
h3	#4	7'-3"	
h4	#4	23'-6"	
h5	#4	13'-9"	
h6	#4	13'-0"	
h7	#4	21'-9"	
V	#6	5'-9"	
V2	#4	10'-3"	
V3	#4	13'-9"	
V4	#4	15'-0"	
V5	#4	10'-9"	
V6	#4	16'-3"	
V7	#4	13'-3"	
V8	#4	21'-0"	
V9	#4	6'-0"	
W	#4	13'-6"	
W1	#4	9'-0"	
W2	#4	24'-0"	
W3	#4	19'-0"	
W4	#4	4'-3"	
W5	#4	4'-9"	
M	#5	2'-6"	
M	#7	5'-7"	



SECTION A-A

Location of expansion bolts in long wall. Spacing 3'-0" horizontal 4'-0" vertical



WING DETAILS

PLAN

PILE DATA
 Type steel H piles 8"BF36
 Est. length 10'-0"
 No. required 36

SOUTH ABUTMENT
 S.B.I. ROUTE 59 SEC. 114 BY
 WILL COUNTY
 STATION 2836+55

DESIGNED: Dennis A. Boudreau
 EXAMINED: W.B. Swanson
 CHECKED: M.A. Ruppel
 IN CHARGE: M.A.R.
 APPROVED: R.P. Boudreau

12/24 Changed vertical dimensions (Piles, & Wings) & provided for...
 Revised Plans

FOR INFORMATION ONLY

ILLINOIS DEPARTMENT OF TRANSPORTATION
 DISTRICT NO. 1 SCHAUMBURG
 1964 EXISTING STRUCTURE PLANS
 FAP ROUTE 338 SECTION 114 BY-R-1
 WILL COUNTY
 SN 099-0143 (E)

SCALE _____ DRAWN BY _____
 DATE AUGUST 17, 2007 CHECKED BY _____