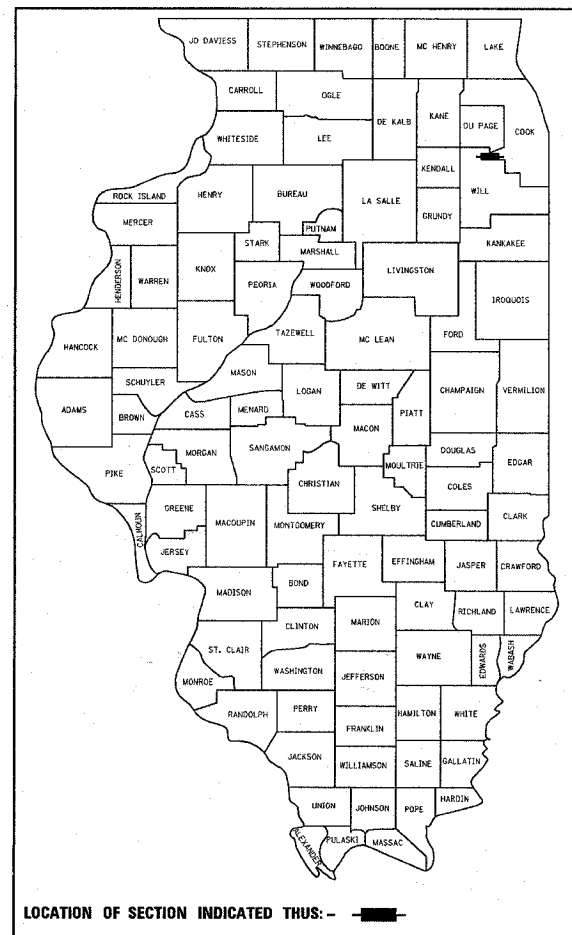


CONTRACT NO. 60C38				
F.A.P. RTE.	SECTION	COUNTY	TOTAL SHEETS	SHEET NO.
353	23 RS-4	COOK	17	1

D-91-207-07

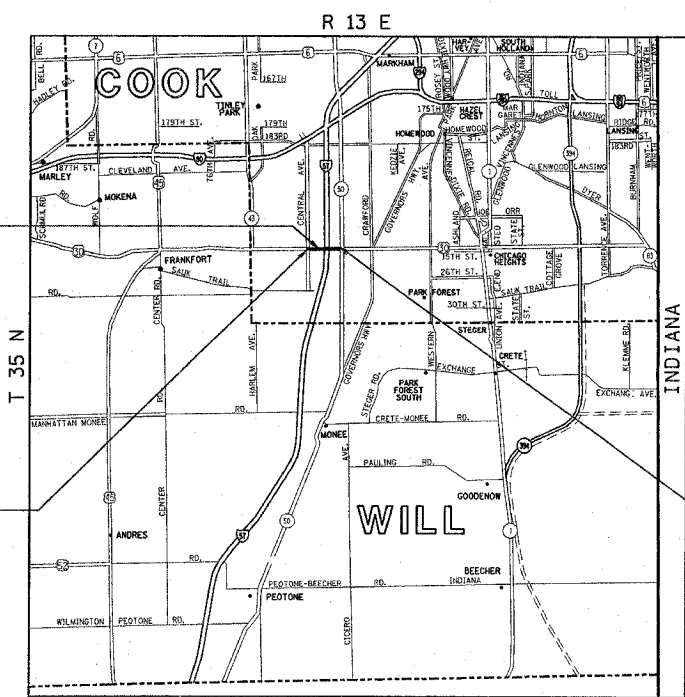
STATE OF ILLINOIS  
DEPARTMENT OF TRANSPORTATION  
DIVISION OF HIGHWAYS  
**PLANS FOR PROPOSED HIGHWAY**  
**FAP 353 : US 30 (211th STREET / LINCOLN HWY)**  
**FROM CENTRAL AVE. TO ILL 50 (CICERO AVE.)**  
**SECTION: 23 RS-4**  
**RESURFACING**



FOR INDEX OF SHEETS, SEE SHEET NO. 2

THE PROJECT IS LOCATED IN THE VILLAGE OF MATTESON

**COOK COUNTY**  
**C-91-207-07**

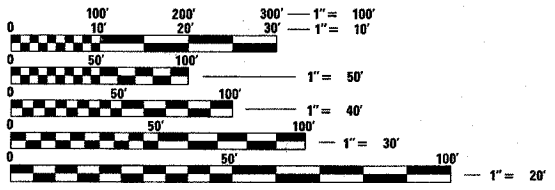


BRIDGE OMISSION  
STA. 33+60.25 TO STA. 36+62.44

IMPROVEMENT BEGINS  
STA. 10+16.52

**TRAFFIC DATA**  
ADT (2005) = 23,600 - 33,300  
POSTED SPEED LIMIT= 45 MPH

IMPROVEMENT ENDS  
STA. 63+42.30



FULL SIZE PLANS HAVE BEEN PREPARED USING STANDARD ENGINEERING SCALES. REDUCED SIZED PLANS WILL NOT CONFORM TO STANDARD SCALES. IN MAKING MEASUREMENTS ON REDUCED PLANS, THE ABOVE SCALES MAY BE USED.

J.U.L.I.E.  
JOINT UTILITY LOCATION INFORMATION FOR EXCAVATION  
1-800-892-0123

CONTRACT NO. 60C38

GROSS LENGTH OF PROJECT = 5,326 LINEAL FEET = 1.05 MILES  
NET LENGTH OF PROJECT = 5,024 LINEAL FEET = 0.95 MILES

STATE OF ILLINOIS  
DEPARTMENT OF TRANSPORTATION  
DIVISION OF HIGHWAYS

SUBMITTED August 30, 2007

Diane O'Keefe  
DEPUTY DIRECTOR OF HIGHWAYS, REGION ENGINEER

October 12, 2007  
Eric E. Ham  
ENGINEER OF DESIGN AND ENVIRONMENT

October 12, 2007  
Melton R. Seo, P.E.  
DIRECTOR OF HIGHWAYS, CHIEF ENGINEER

**PRINTED BY THE AUTHORITY  
OF THE STATE OF ILLINOIS**

DISTRICT ONE DESIGN PLAN PREPARATION ENGINEER: KEN ENG / ROBERT BORO (847)705-4178