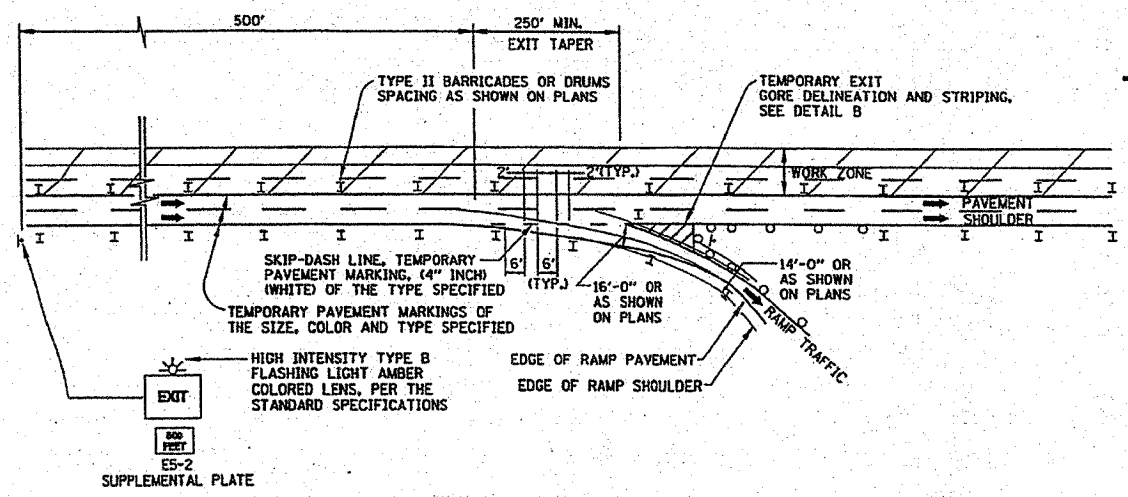
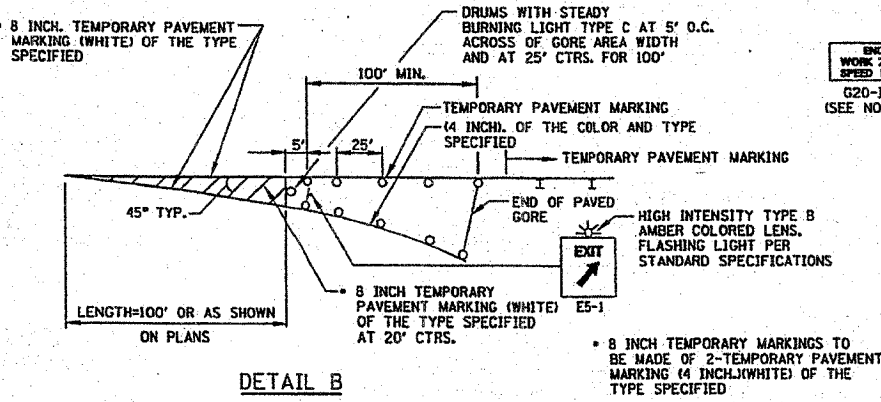


F.A.U. RTE.	SECTION	COUNTY	TOTAL SHEETS	SHEET NO.
2678	N-7-5-1-1	COOK	18	18
STA.		TO STA.		
FED. ROAD DIST. NO.		ALIGNMENT	FED. AID PROJECT	

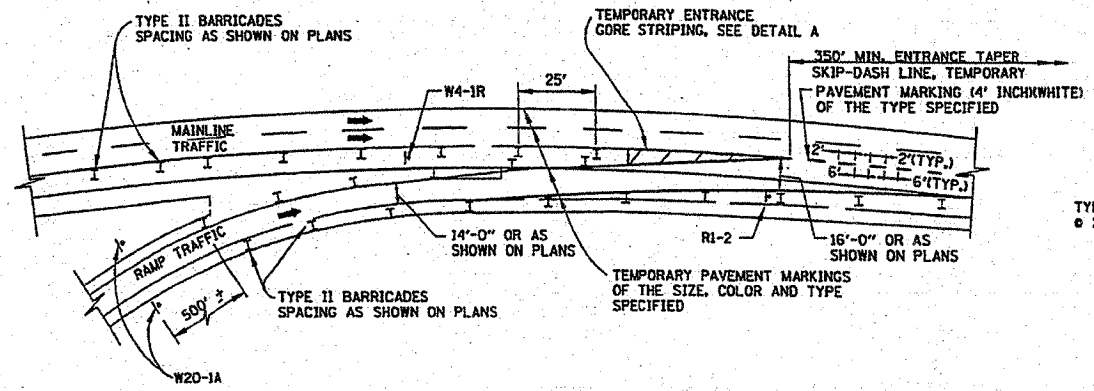
CONTRACT NO. 60C45



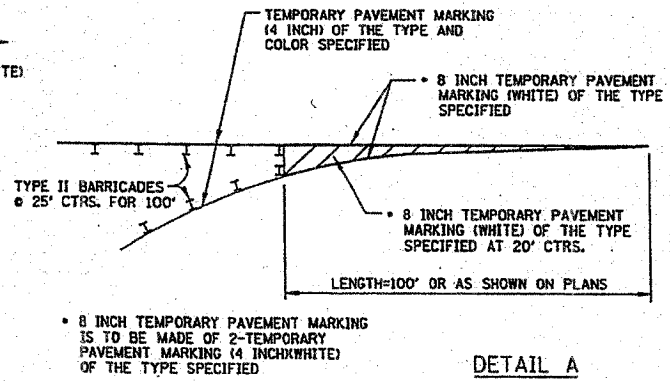
TYPICAL APPLICATION OF TEMPORARY EXIT GORE DELINEATION AND SIGNING



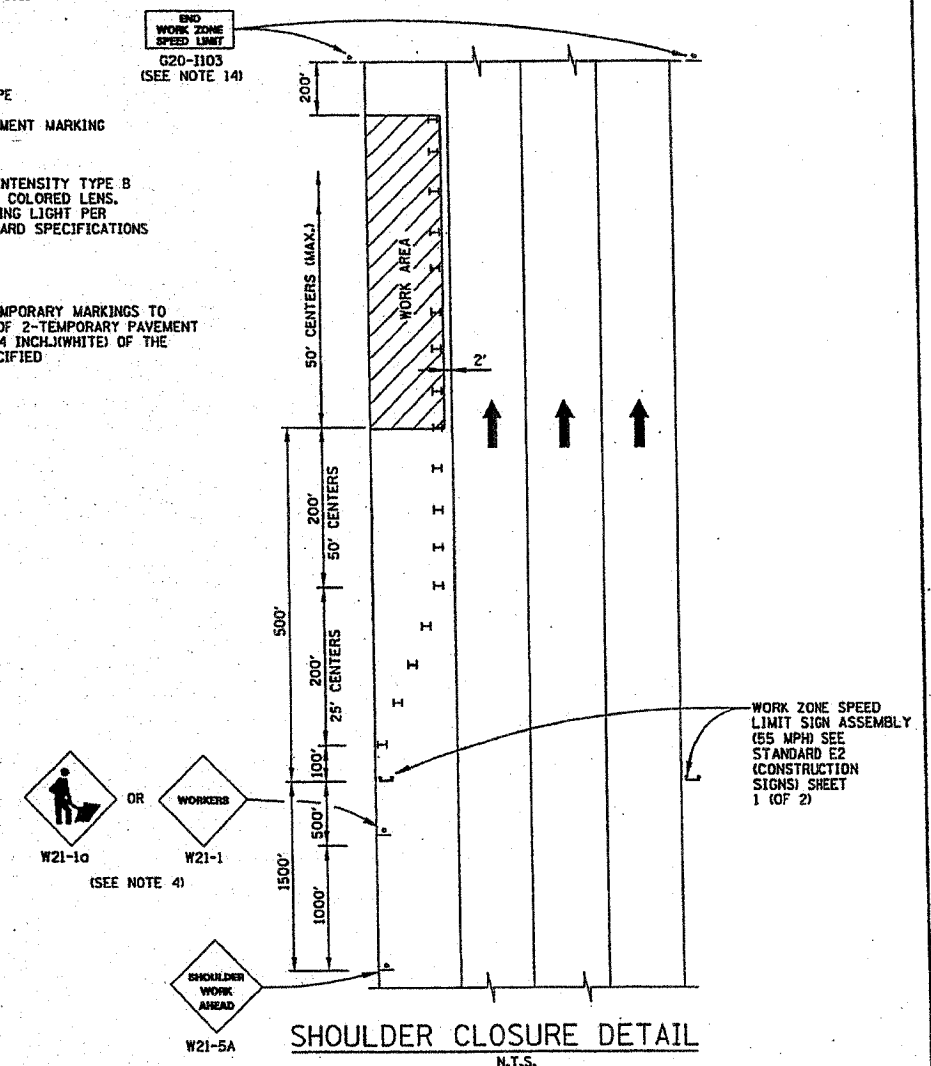
DETAIL B
TEMPORARY EXIT GORE DELINEATION AND SIGNING



TYPICAL APPLICATION OF TEMPORARY ENTRANCE GORE DELINEATION AND SIGNING



DETAIL A
TEMPORARY ENTRANCE GORE STRIPING



SHOULDER CLOSURE DETAIL
N.T.S.

GENERAL NOTES:

1. THE SHOULDER SHALL BE CLOSED WHEN A WORK ACTIVITY REQUIRING 15 OR MORE MINUTES IS PERFORMED AT A DISTANCE WHICH IS LESS THAN 15 FEET BUT NO CLOSER THAN 2 FEET THE EDGE OF PAVEMENT.
2. THE ADJACENT EXTERIOR LANE SHALL BE CLOSED WHEN WORK IS PERFORMED WITHIN 2 FEET FROM THE EDGE OF PAVEMENT.
3. THE CHANNELIZING DEVICES WHICH SEPARATE THE WORK SPACE FROM THE ADJACENT TRAVEL LANE SHALL BE SPACED AT 25' FOR THE NINE DEVICES (200 FEET) AND AT A MAXIMUM OF 50' FOR ALL ADDITIONAL DEVICES.
4. WHEN THE WORKSITE IS UNATTENDED, SUBSTITUTE - "SHOULDER WORK AHEAD" SIGN FOR THE SECOND SIGN.
5. WORKER SIGNS OR SHOULDER WORK SIGNS AND CHANNELIZATION DEVICES ARE PLACED ONLY ON THE SIDE OF THE ROADWAY ON WHICH THE ACTIVITY IS PERFORMED.
6. FOR SHOULDER CLOSURE EXTENDING OVERNIGHT, BARRICADE TYPE II WITH STEADY BURNING LIGHT, TYPE C SHALL BE USED.
7. FOR SHORT TERM CLOSURE (SUNRISE TO ONE HOUR BEFORE SUNSET) NOT EXTENDING INTO DARKNESS, CONES MAY BE USED.
8. ONE WORK ZONE SPEED LIMIT SIGN ASSEMBLY (55 MPH - BEGINS) SHALL BE PLACED AT A DISTANCE OF 500' TO 2,500' MAXIMUM IN ADVANCE OF WORKERS THROUGHOUT THE SHOULDER CLOSURE. MOVING OPERATIONS MAY REQUIRE CONTINUOUS ADJUSTMENT OF THE SIGN ASSEMBLY LOCATION TO MAINTAIN THE ABOVE INTERVAL.
9. AN ADDITIONAL SIGN ASSEMBLY SHALL BE PLACED 500' BEYOND THE LAST ENTRANCE RAMP FOR EACH INTERCHANGE THAT FALLS WITHIN THE 2,500'.
10. THE SIGN ASSEMBLY SHALL BE PLACED NO CLOSER THAN 500' TO ANY OTHER SIGN.
11. THE SIGN ASSEMBLY SHALL NOT BE UTILIZED WHEN WORKERS ARE BEHIND A TEMPORARY (MOVABLE BARRIER) WALL.
12. THE WORK ZONE SPEED LIMIT SIGNS AND SIGN ASSEMBLY SHALL BE PROMPTLY REMOVED OR COVERED WHEN WORKERS ARE NOT PRESENT OR CLOSE TO MOVING TRAFFIC.
13. ALL CONFLICTING SPEED LIMIT SIGNS SHALL BE COVERED OR REMOVED.
14. "END WORK ZONE SPEED LIMIT" SIGNS SHALL BE IN PLACE ONLY WHEN THE EXISTING POSTED SPEED > 55MPH.
15. FOR SHOULDER REPAIRS OR REPLACEMENT THE CHANNELIZING DEVICES SHALL BE PLACED AT THE EDGE OF PAVEMENT WHENEVER THE WORK ACTIVITIES RESULT IN A DROPOFF AT THE EDGE OF PAVEMENT.

APPROVED: *Jeff Haly*
DATE 1-1-2007



DATE	REVISIONS

TEMPORARY GORE DETAILS AND SHOULDER CLOSURE DETAILS

STANDARD E3-00