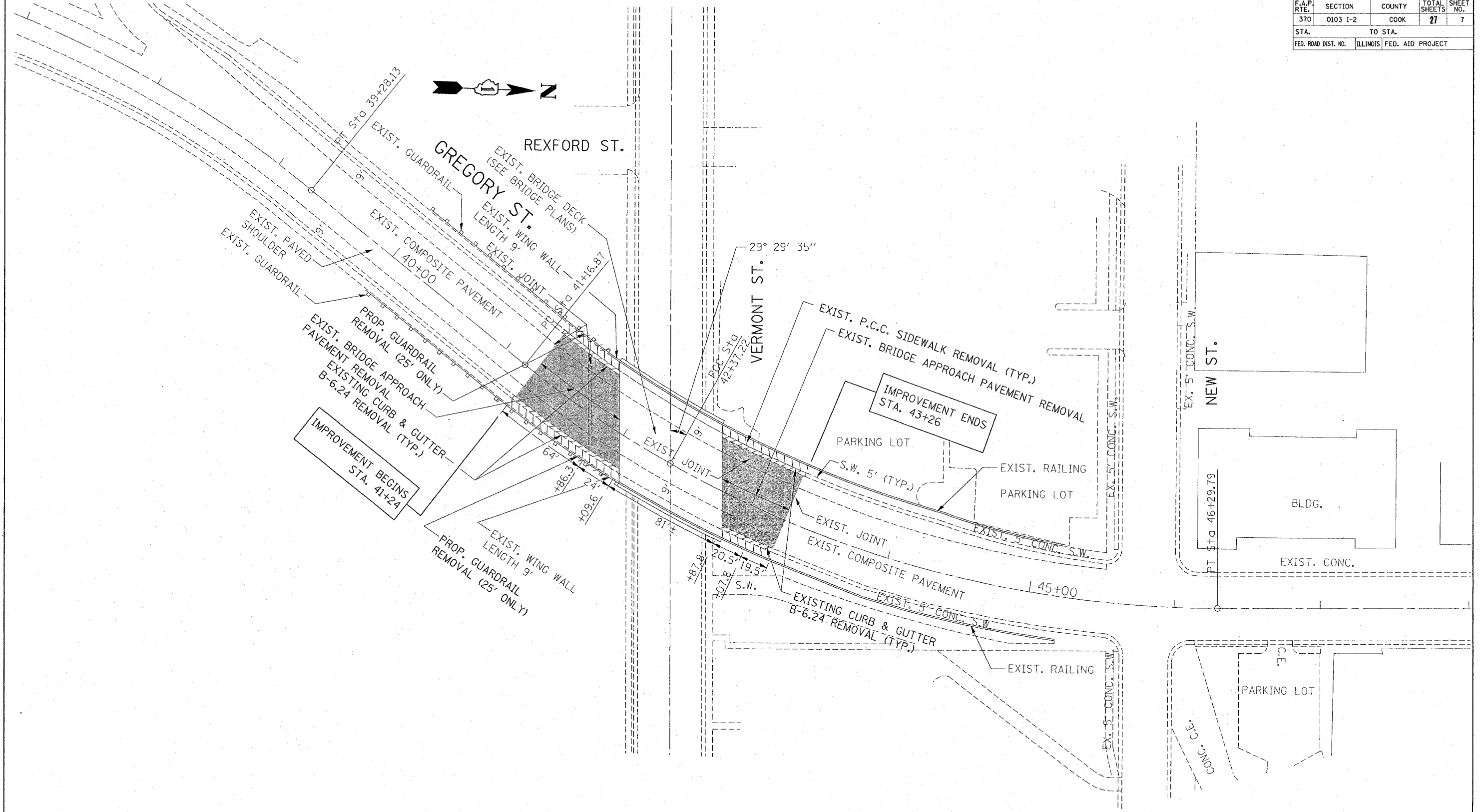


F.A.P. RTE.	SECTION	COUNTY	TOTAL SHEETS	SHEET NO.
370	0103 I-2	COOK	27	7
STA.		TO STA.		
FED. ROAD DIST. NO.		ILLINOIS FED. AID PROJECT		

*REF-top01



PLOT DATE = 8/29/2007
 FILE NAME = c:\projects\62362\sh_dwg.dgn
 PLOT SCALE = 3/8"=1' IN.
 USER NAME = drvakcsgn

REVISIONS		ILLINOIS DEPARTMENT OF TRANSPORTATION
NAME	DATE	
		WESTERN AVE/ GREGORY ST. OVER VERMONT AVE. EXISTING ROADWAY PLAN

SCALE: VERT. 1"=30'
 HORIZ. DATE 8/29/2007

DRAWN BY
 CHECKED BY