

STATE OF ILLINOIS
DEPARTMENT OF TRANSPORTATION

ROUTE NO.	SECTION	COUNTY	TOTAL SHEETS	SHEET NO.	SHEET NO.
FAP 370	01031-2	COOK	27	15	10 SHEETS
FED. ROAD DIST. NO. 7	ILLINOIS	FED. AID PROJECT			

Contract # 62352

BILL OF MATERIAL

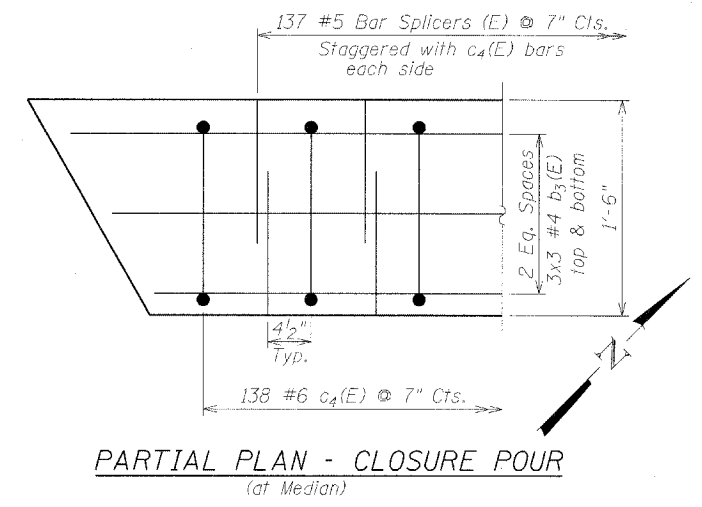
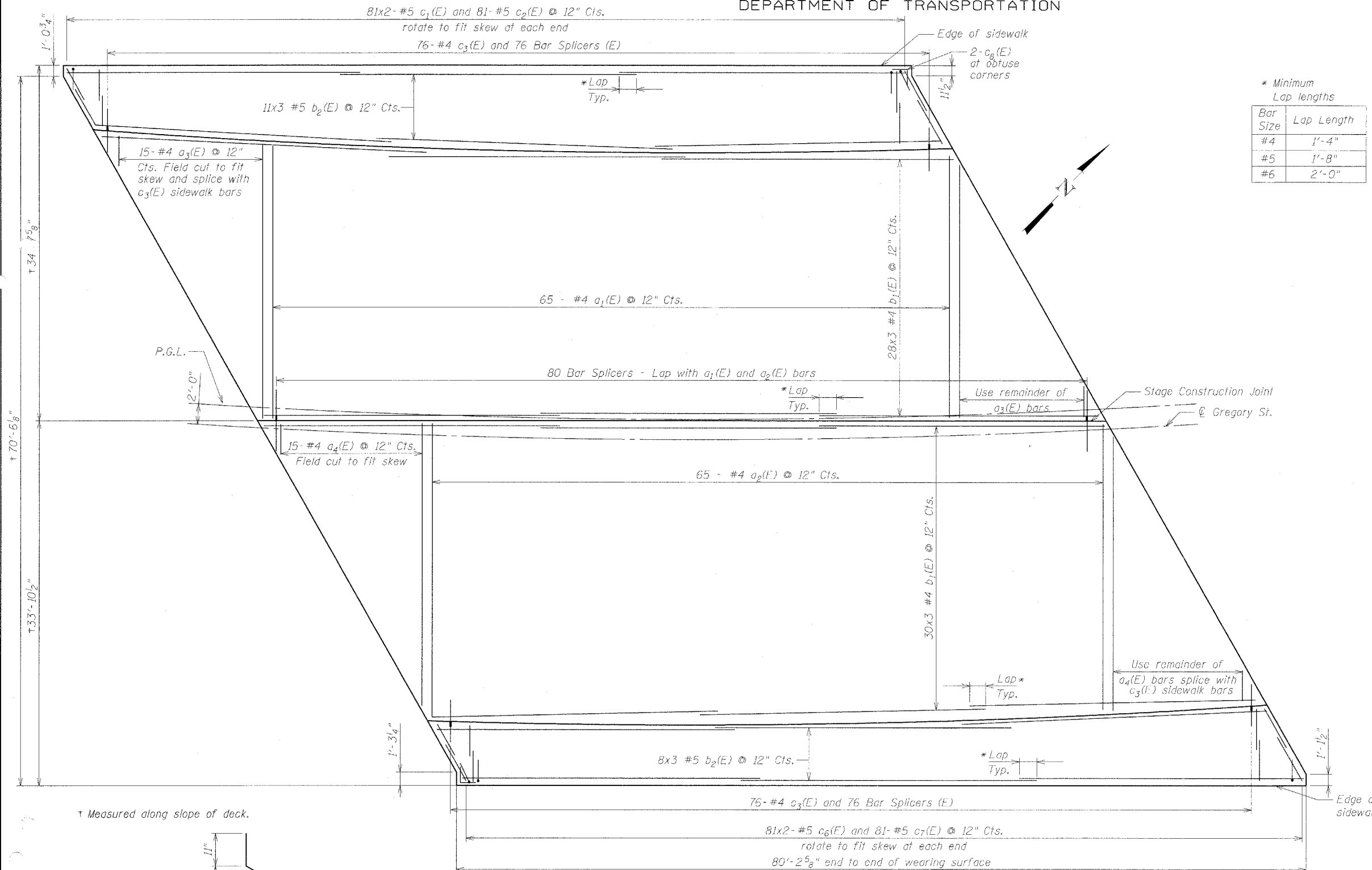
Bar	No.	Size	Length	Shape
a ₁ (E)	65	#4	25'-10"	—
a ₂ (E)	65	#4	28'-8"	—
a ₃ (E)	15	#4	26'-8"	—
a ₄ (E)	15	#4	27'-3"	—
b ₁ (E)	174	#4	27'-10"	—
b ₂ (E)	57	#5	30'-0"	—
b ₃ (E)	18	#4	27'-10"	—
c ₁ (E)	162	#5	5'-0"	—
c ₂ (E)	81	#5	2'-10"	┌
c ₃ (E)	152	#4	4'-0"	—
c ₄ (E)	138	#6	2'-6"	┌
c ₅ (E)	162	#5	4'-6"	—
c ₇ (E)	81	#5	2'-5"	┌
c ₈ (E)	4	#4	3'-0"	┌

Concrete Superstructure	Cu. Yd.	63.4
Bridge Deck Grooving	Sq. Yd.	499
Reinforcement Bars, Epoxy Coated	Pound	12,590
Bar Splicers	Each	232
Concrete Wearing Surface 5"	Sq. Yd.	499
Protective Coat	Sq. Yd.	669

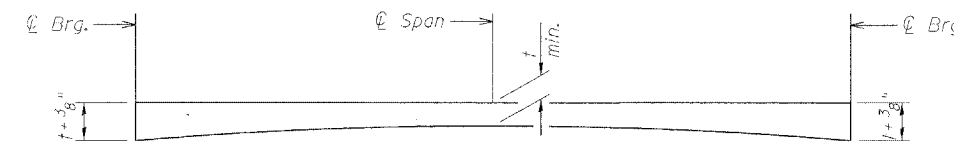
Reinforcement Bars designated (E) shall be epoxy coated

* Minimum Lap lengths

Bar Size	Lap Length
#4	1'-4"
#5	1'-8"
#6	2'-0"

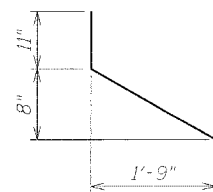


WEARING SURFACE PLAN

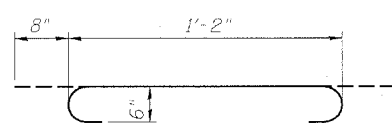


REINFORCED CONCRETE WEARING SURFACE PROFILE

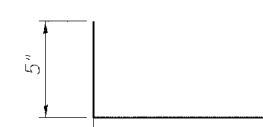
t = Minimum specified wearing surface thickness
See sheet 6 of 10 for details.



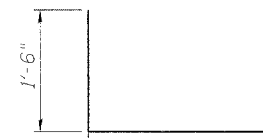
Bar c₂(E)



C₄(E) BAR



C₇(E) BAR



C₈(E) BAR

DESIGNED	JRS
CHECKED	AML
DRAWN	RBH
CHECKED	AML

CONCRETE WEARING SURFACE
GREGORY STREET
OVER VERMONT STREET
SECTION 01031-2
COOK COUNTY
STRUCTURE NO. 016-0776
STATION 42+37.22

GRAEF, ANHALT, SCHLOEMER & ASSOCIATES, INC.
CONSULTING ENGINEERS AND LAND SURVEYORS
8501 W. Higgins Road, Suite 280
Chicago, Illinois 60631
(773) 399-0112