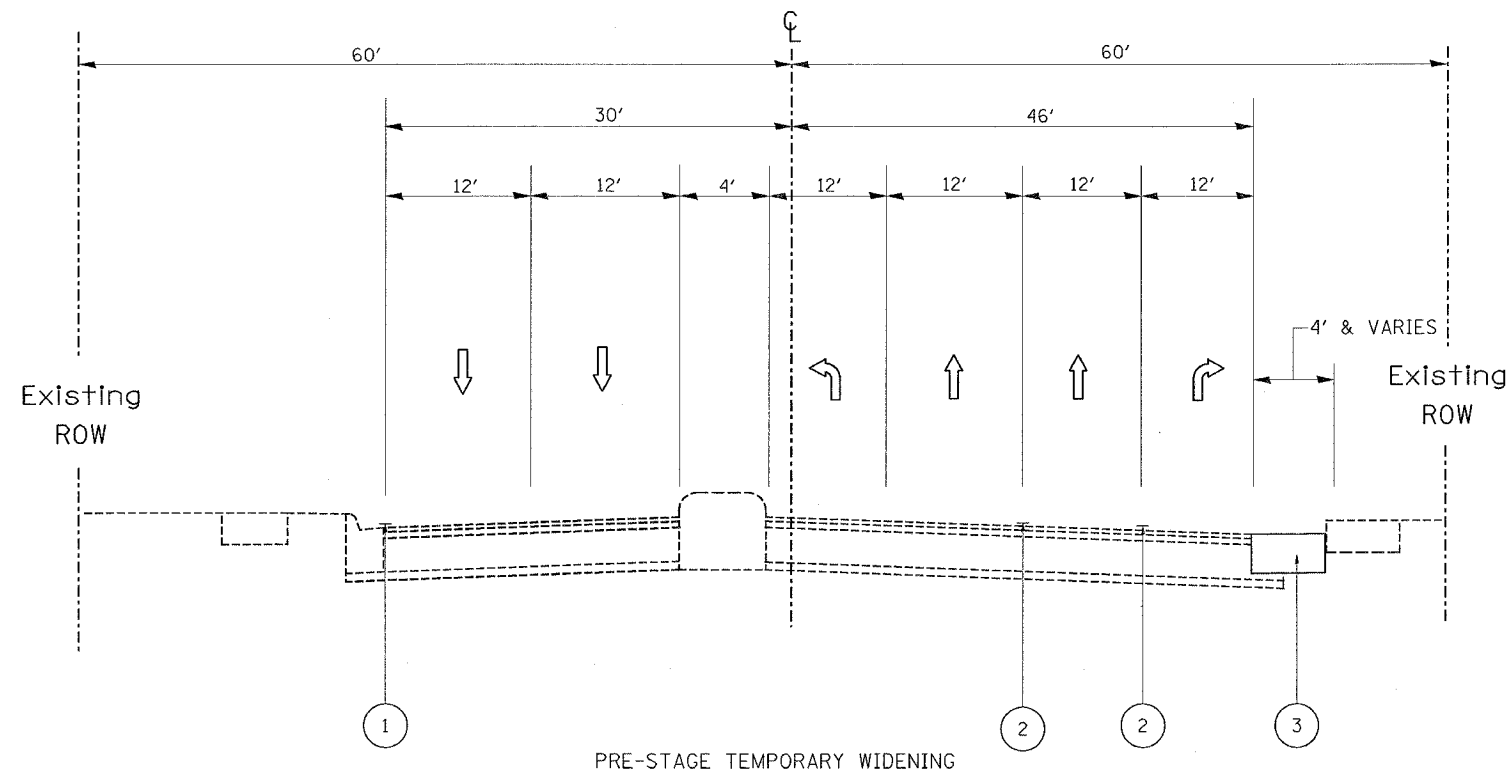


F.A.P. RTE.	SECTION	COUNTY	TOTAL SHEETS	SHEET NO.
870	534 R-1-T	WILL	42	6
STA.		TO STA.		
FED. ROAD DIST. NO.		ILLINOIS FED. AID PROJECT		



PRE-STAGE TEMPORARY WIDENING
ILLINOIS ROUTE 53
STA. 22+50 TO STA. 27+00
LOOKING NORTH

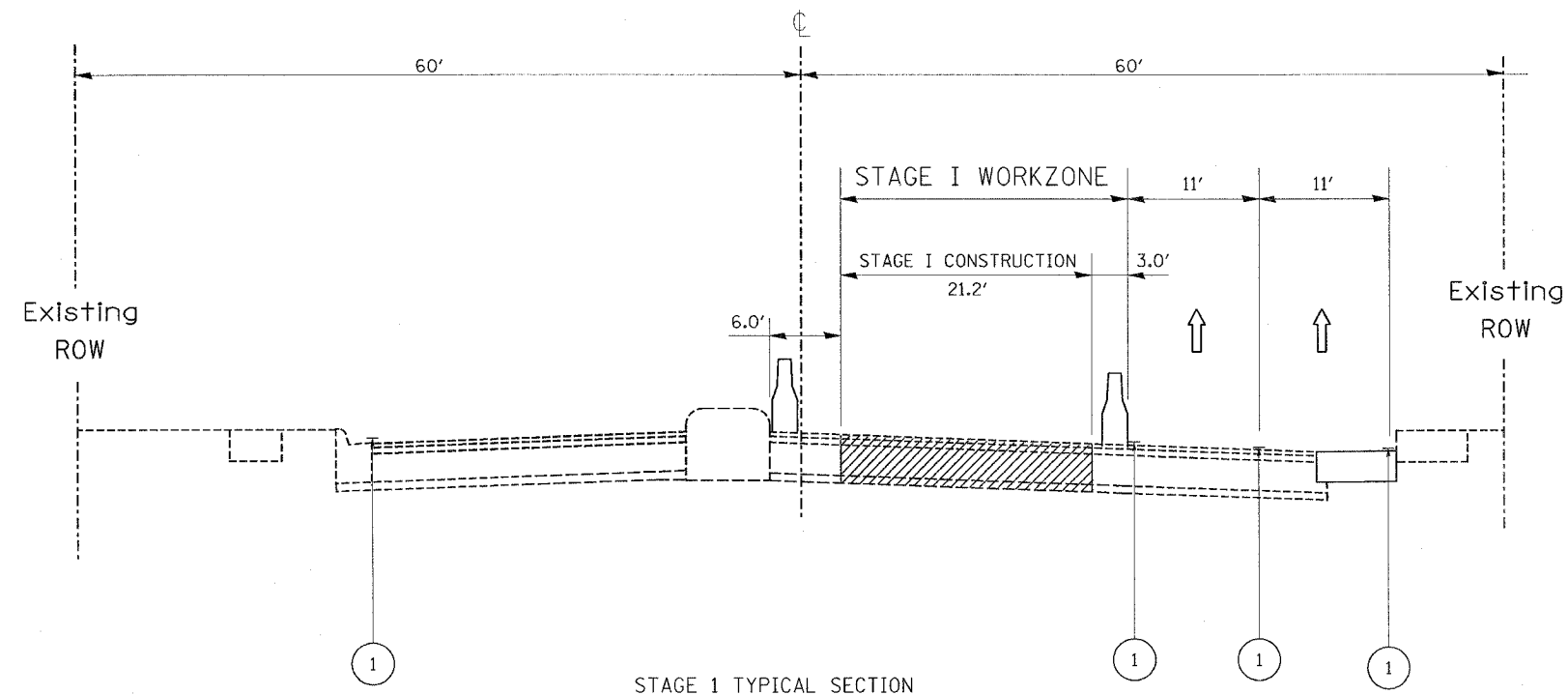
LEGEND

- ① WET TEMPORARY PAVEMENT MARKING TAPE, TYPE III, 4 INCH
- ② EDGELINES OR LANE LINES TO BE REMOVED
- ③ PROPOSED TEMPORARY PAVEMENT**

** NOTE: CURB AND GUTTER SHALL BE REMOVED AS INDICATED ON THE PLANS BEFORE PLACING TEMP. PAVEMENT. (SEE BELOW)

LOCATION OF CURB & GUTTER REMOVAL

STAGE I		STAGE II	
FROM	TO	FROM	TO
STA 22+64	STA 27+10	STA 24+62	STA 27+10
STA 27+90	STA 30+00	STA 27+90	STA 29+48



STAGE 1 TYPICAL SECTION
ILLINOIS ROUTE 53
STA. 26+00 TO STA. 27+00
LOOKING NORTH

REVISIONS	
NAME	DATE

ILLINOIS DEPARTMENT OF TRANSPORTATION

ILLINOIS ROUTE 53
OVER LILY CACHE CREEK
SUGGESTED STAGING AND TRAFFIC CONTROL

SCALE: VERT. _____
DATE: _____ HORIZ. _____
DRAWN BY _____
CHECKED BY _____

PLOT DATE = 8/31/2007
FILE NAME = c:\projects\p151601\design\dm32
DRAWN BY = BRESA
REFERENCE = BRESA

8/31/2007
c:\projects\p151601\design\dm32
byunsh