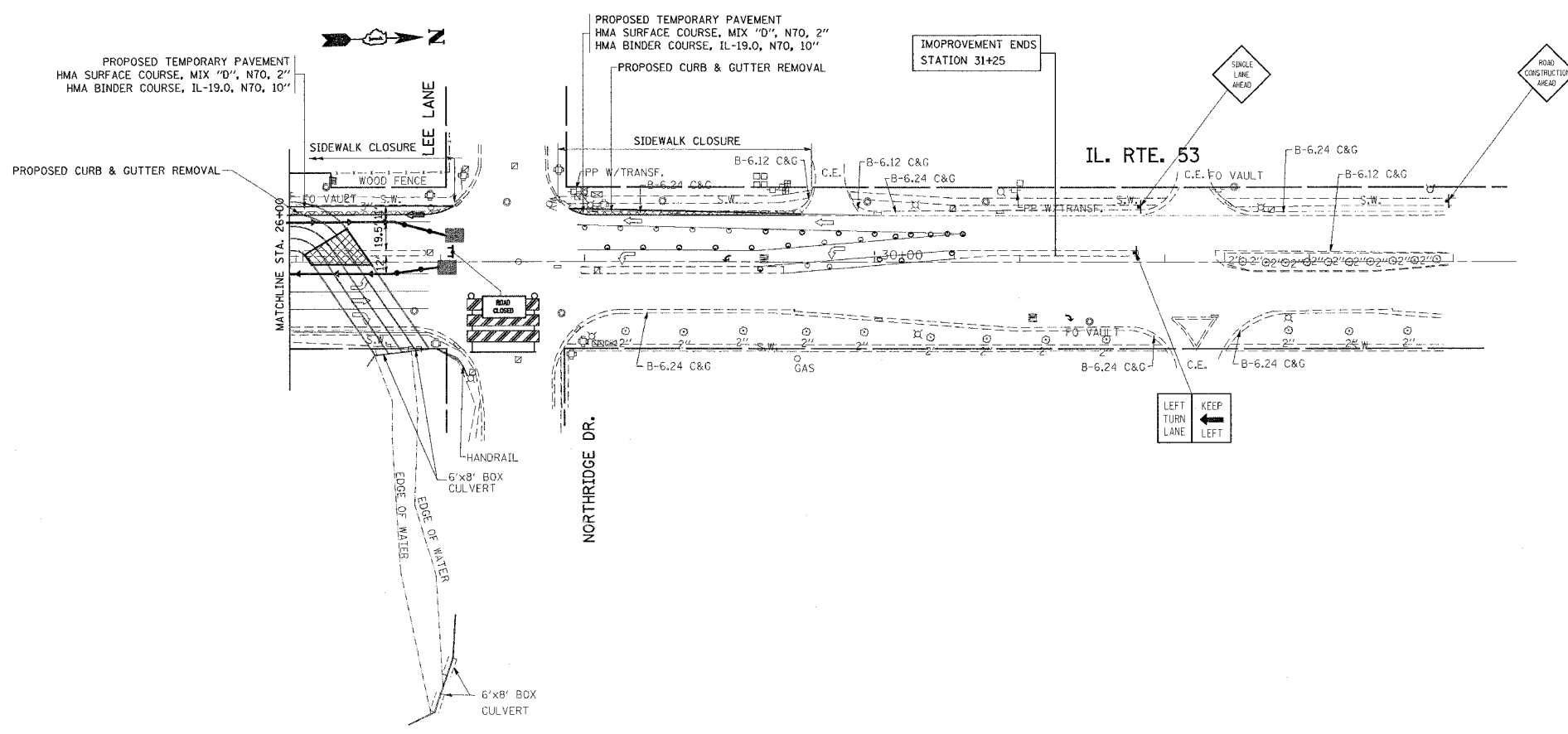
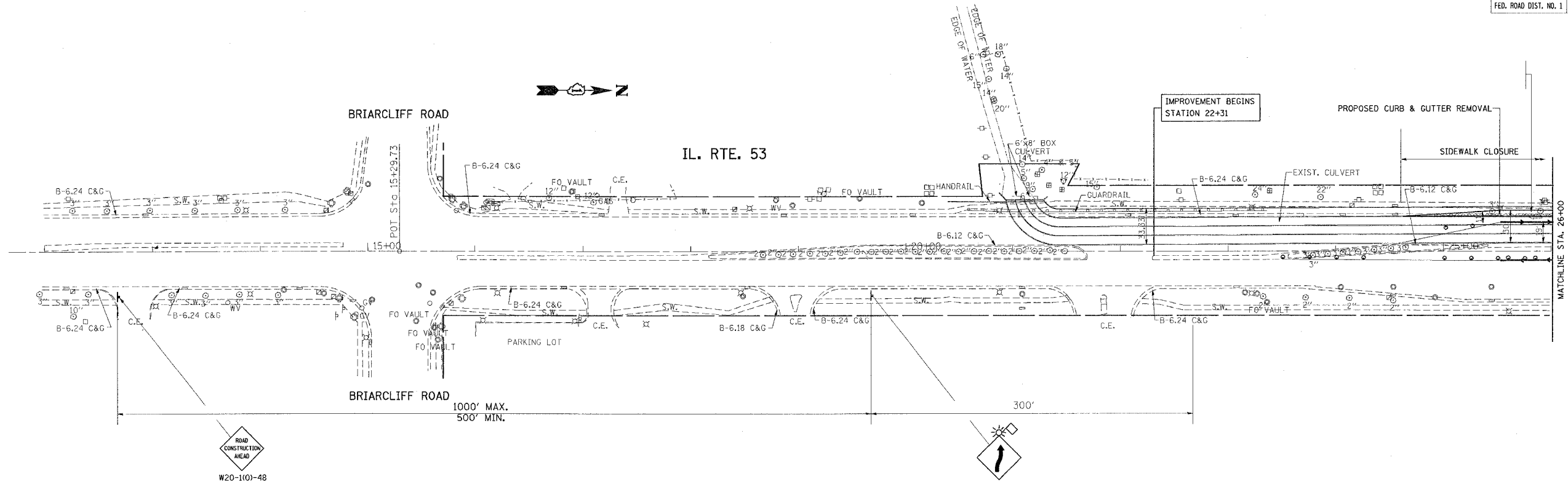


\*REF-topo01  
\*REF-topo02

CONTRACT NO. 62556

F.A.P. RTE.	SECTION	COUNTY	TOTAL SHEETS	SHEET NO.
870	534 R-1-T	WILL	42	8
STA. TO STA.		TO STA.		
FED. ROAD DIST. NO. 1		ILLINOIS	FED. AID PROJECT	



	WORK AREA
	SIGN
	DRUM WITH STEADY BURNING LIGHT, 25' C-C
	TYPE C REFLECTOR, 25' C-C
	TEMPORARY CONCRETE BARRIER
	IMPACT ATTENUATOR
	STEADY BURNING LIGHTS AND DOUBLE VERTICAL PANELS
	4" WHITE SOLID LANE LINE, WET TEMP PAVEMENT MARKING TAPE, TYPE III

REVISIONS	
NAME	DATE

ILLINOIS DEPARTMENT OF TRANSPORTATION  
ILLINOIS ROUTE 53  
OVER LILY CACHE CREEK  
SUGGESTED STAGING AND TRAFFIC CONTROL  
STAGE II

SCALE: VERT. DATE  
HORIZ. DATE

DRAWN BY  
CHECKED BY

PLOT DATE = 8/31/2007  
PLOT SCALE = 50' = 1" IN.  
REFERENCE = BREF9