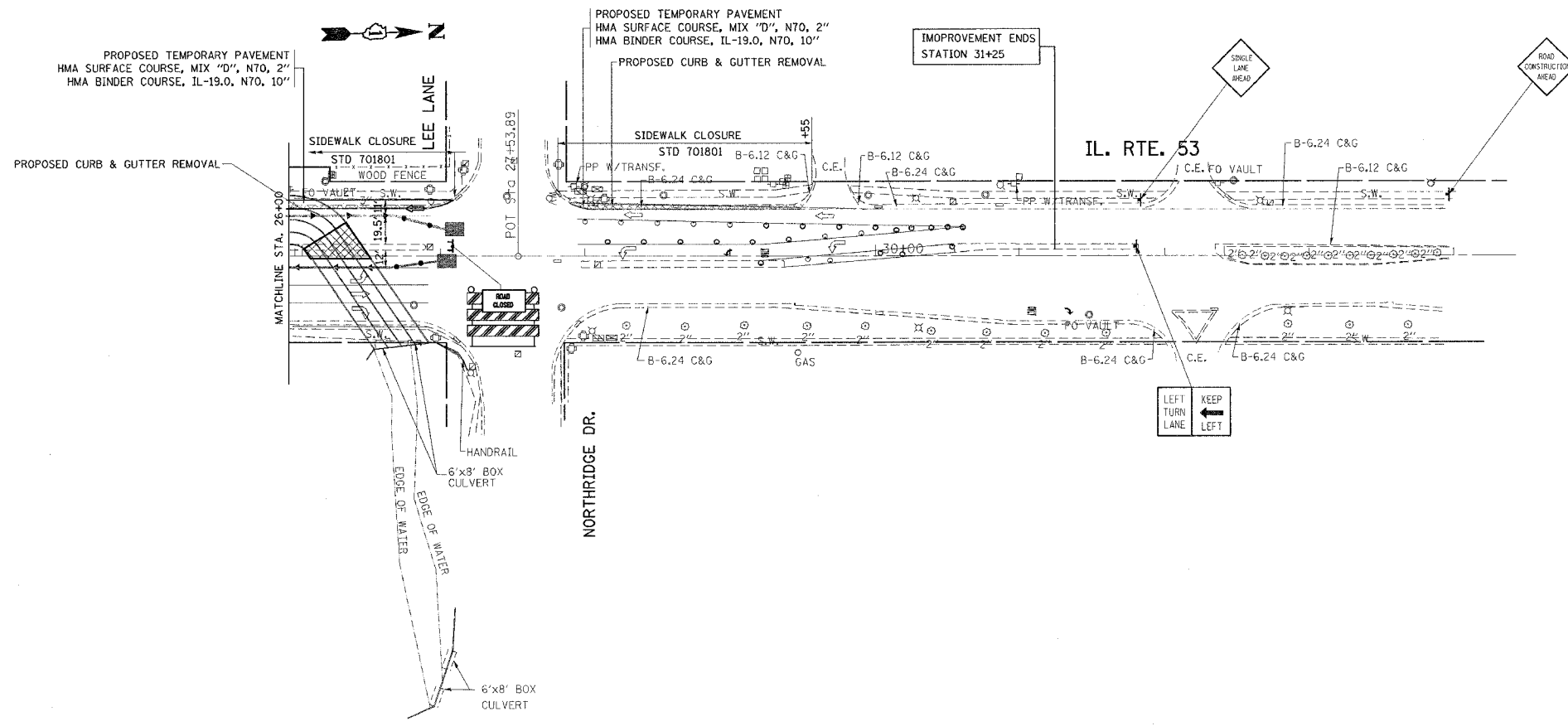
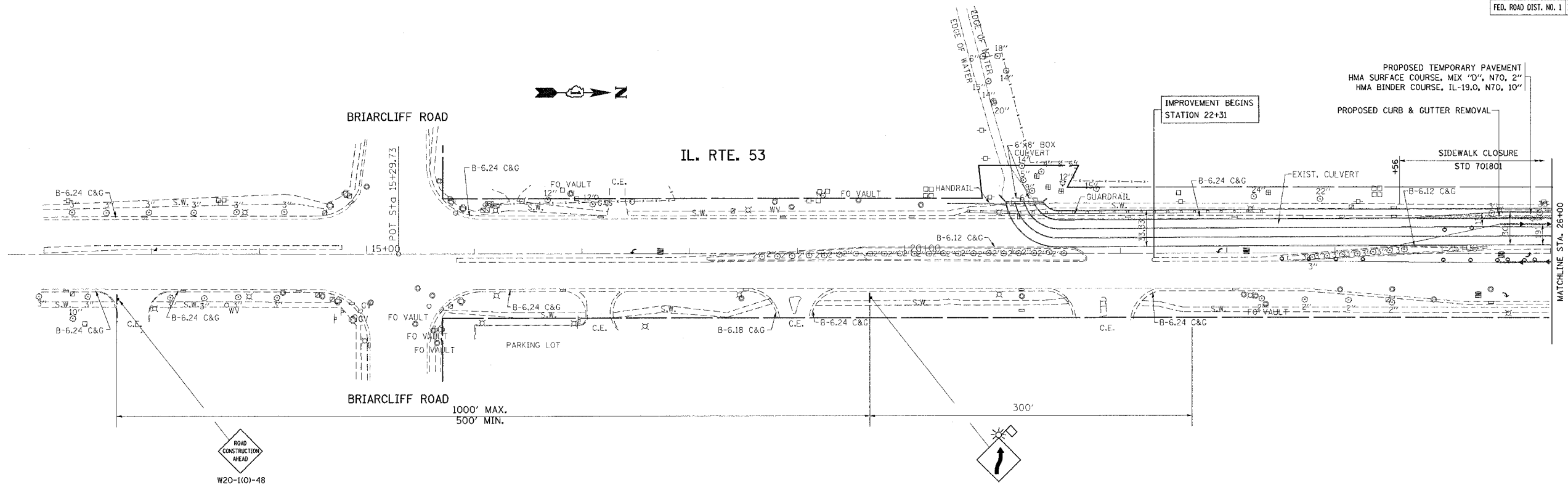


F.A.P. RTE.	SECTION	COUNTY	TOTAL SHEETS	SHEET NO.
870	534 R-1-T	WILL	42	9
STA. TO STA.		FED. ROAD DIST. NO. 1 ILLINOIS FED. AID PROJECT		



	WORK AREA
	SIGN
	DRUM WITH STEADY BURNING LIGHT, 25' C-C
	TYPE C REFLECTOR, 25' C-C
	TEMPORARY CONCRETE BARRIER
	IMPACT ATTENUATOR
	STEADY BURNING LIGHTS AND DOUBLE VERTICAL PANELS
	4" WHITE SOLID LANE LINE, WET TEMP PAVEMENT MARKING TAPE, TYPE III

REVISIONS	
NAME	DATE

ILLINOIS DEPARTMENT OF TRANSPORTATION
 ILLINOIS ROUTE 53
 OVER LILY CACHE CREEK
 SUGGESTED STAGING AND TRAFFIC CONTROL
 STAGE II

SCALE: VERT. DATE HORIZ. DATE

DRAWN BY CHECKED BY

PLOT DATE = DATE
 FILE NAME = FILE
 PLOT SCALE = SCALE
 REFERENCE = REF

DATE-TIME
 DGN-SPEC
 USER