

F.A. RTE.	SECTION	COUNTY	TOTAL SHEETS	SHEET NO.
VAR.	2004-126 I	*	16	1

* COOK, DU PAGE, LAKE, KANE, McHENRY AND WILL

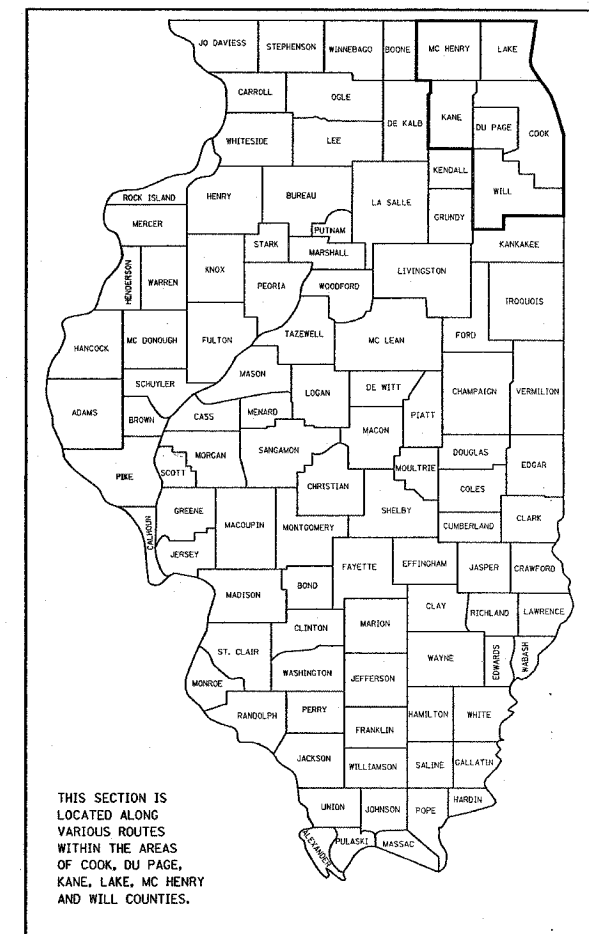
STATE OF ILLINOIS
DEPARTMENT OF TRANSPORTATION
DIVISION OF HIGHWAYS

**PROPOSED
HIGHWAY PLANS**

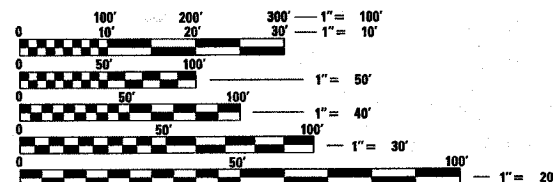
ROUTE: VARIOUS DISTRICT ONE
SECTION: 2004-126I

COUNTY: VARIOUS (COOK, DUPAGE, LAKE, KANE, McHENRY AND WILL)
ARTERIAL HIGHWAY CLEANING (SWEEPING)
C-91-088-05

FOR INDEX OF SHEETS, SEE SHEET NO. 2



LOCATION MAPS - SEE INDEX OF SHEETS



FULL SIZE PLANS HAVE BEEN PREPARED USING STANDARD ENGINEERING SCALES. REDUCED SIZED PLANS WILL NOT CONFORM TO STANDARD SCALES. IN MAKING MEASUREMENTS ON REDUCED PLANS, THE ABOVE SCALES MAY BE USED.

J.U.L.I.E.
JOINT UTILITY LOCATION INFORMATION FOR EXCAVATION
1-800-892-0123

CONTRACT NO. 62893

STATE OF ILLINOIS
DEPARTMENT OF TRANSPORTATION
DIVISION OF HIGHWAYS

SUBMITTED Sept. 21, 20 07
Bione O'Keefe
DEPUTY DIRECTOR OF HIGHWAYS, REGION ENGINEER

October 12, 20 07
Eric E. Harmon
Interim ENGINEER OF DESIGN AND ENVIRONMENT

October 12, 20 07
Milton R. See
DIRECTOR OF HIGHWAYS, CHIEF ENGINEER

**PRINTED BY THE AUTHORITY
OF THE STATE OF ILLINOIS**

CONTRACT NO. 62893				
F.A. RTE.	SECTION	COUNTY	TOTAL SHEETS	SHEET NO.
VAR.	2004-126 I	VARIOUS	16	2
STA.		TO STA.		
FED. ROAD DIST. NO.	ILLINOIS	FED. AID PROJECT		

*COOK, DU PAGE, KANE, LAKE, MC HENRY AND WILL

INDEX OF SHEETS

1. TITLE SHEET
2. INDEX OF SHEETS
APPLICABLE STATE STANDARDS
3. SUMMARY OF QUANTITIES
SCHEDULE OF CLEANING STARTING DATES
4. ARTERIAL TYPICAL SECTIONS
- 5.- 11. LOCATION SHEETS
- 12.- 14. ARTERIAL ROADWAY LABORING LOCATION MAPS
15. DISTRICT ONE DETAILS: TRAFFIC CONTROL DEVICES FOR
HIGHWAY AND SIGN CLEANING OPERATIONS-DAY TIME ONLY
16. TRAFFIC CONTROL DETAILS FOR SHOULDER CLOSURES
AND PARTIAL RAMP CLOSURES

STATE STANDARDS

- | | |
|---|---|
| <p>701001-01
701006-02
701101-01
701301-02
701311-02
701 411-03
702001-06</p> | <p>OFF-ROAD OPERATION 2L, 2W, 15' MIN. AWAY FOR SPEEDS >45 MPH
OFF-ROAD OPERATION 2L, 2W, 15' TO PAVEMENT EDGE FOR SPEEDS >45 MPH
OFF-ROAD OPERATION 2L, 2W, DAY ONLY FOR SPEEDS >45 MPH
LANE CLOSURE, 2L 2W, SHORT TIME OPERATIONS
LANE CLOSURE, 2L 2W, MOVING OPERATIONS - DAY ONLY
LANE CLOSURE, MULTILANE AT ENTERANCE/EXIT RAMP FOR SPEEDS >45 MPH
TRAFFIC CONTROL DEVICES</p> |
|---|---|

PLOT DATE = 9/24/2007
 PLOT SCALE = 1/8" = 1'-0"
 USER NAME = mdyjs

REVISIONS		ILLINOIS DEPARTMENT OF TRANSPORTATION
NAME	DATE	
		INDEX OF SHEETS AND STATE STANDARDS

SCALE: VERT. DATE
HORIZ. DRAWN BY
CHECKED BY

F.A. RTE.	SECTION	COUNTY	TOTAL SHEETS	SHEET NO.
VAR.	2004-126 I	VARIOUS	16	3
STA.		TO STA.		
FED. ROAD DIST. NO.		ILLINOIS	FED. AID PROJECT	

* COOK, DU PAGE, KANE, LAKE, MC HENRY AND WILL

SUMMARY OF QUANTITIES

URBAN
100% STATE

CODE NO.	ITEM	UNIT	MAIN QUANTITY
X0323141	SUPPLEMENTAL SWEEPING	MILE	150
X0330500	INITIAL ARTERIAL CLEANING CYCLE	EACH	1
X0330600	FULL ARTERIAL CLEANING CYCLE	EACH	2

ARTERIAL CLEANING SCHEDULE OF ANTICIPATED STARTING DATES - 2008

INITIAL CLEANING CYCLE	----	MARCH 1
1st FULL CLEANING CYCLE	----	JUNE 15
2nd FULL CLEANING CYCLE	----	SEPTEMBER 8 (RECOMMENDED TO BE COMPLETED ON OR BEFORE NOVEMBER 30)

ARTERIAL CLEANING SCHEDULE OF ANTICIPATED STARTING DATES - 2009

INITIAL CLEANING CYCLE	----	MARCH 1
1st FULL CLEANING CYCLE	----	JUNE 15
2nd FULL CLEANING CYCLE	----	SEPTEMBER 8 (RECOMMENDED TO BE COMPLETED ON OR BEFORE NOVEMBER 30)

NOTES:

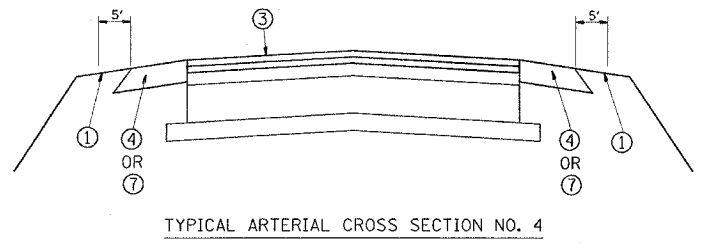
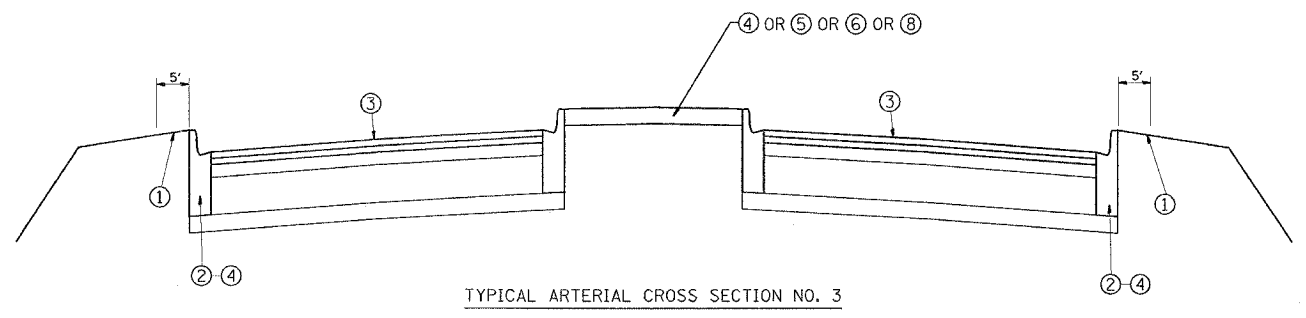
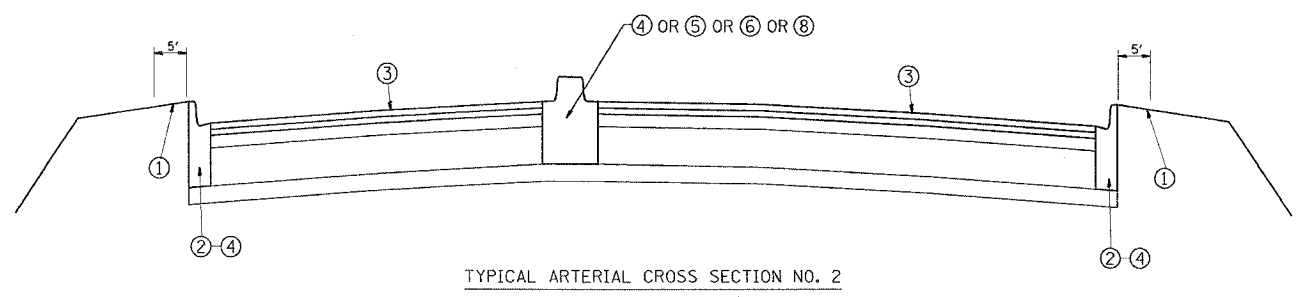
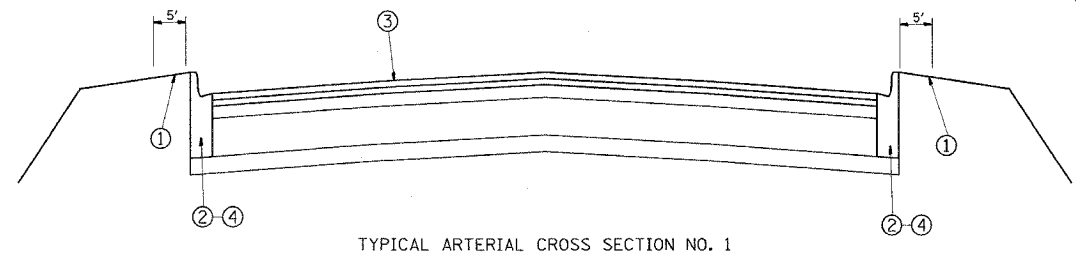
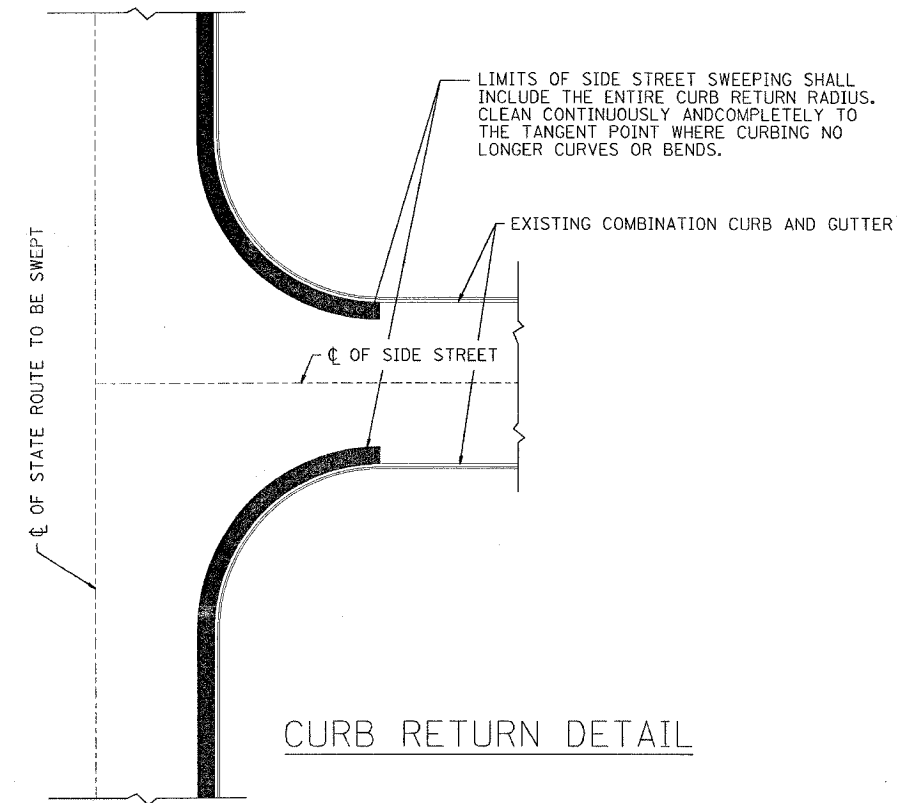
- SCHEDULE MAY VARY AS DIRECTED BY THE ENGINEER.
- THE CONTRACTOR MAY NOT START CLEANING CYCLES BEFORE THE DATES SCHEDULED IN THE PLANS WITHOUT WRITTEN AUTHORIZATION FROM THE ENGINEER.
- NO WORK WILL BE ALLOWED DURING ANY LEGAL HOLIDAY PERIOD.
- ALL SCHEDULES OF ANTICIPATED STARTING DATES SHOWN ARE TENTATIVE AS DETERMINED BY THE DEPARTMENT'S OPERATIONAL NEEDS.

REVISIONS		ILLINOIS DEPARTMENT OF TRANSPORTATION
NAME	DATE	
		SUMMARY OF QUANTITIES AND SCHEDULE OF STARTING DATES

SCALE: VERT. DATE
HORIZ. CHECKED BY

Rev.

*COOK, DU PAGE, KANE, LAKE, MC HENRY AND WILL



- LEGEND**
- ① AREA OF RUBBISH REMOVAL
 - ② CURB AND GUTTER
 - ③ TRAVELED ROADWAY
 - ④ STABILIZED SHOULDER OR MEDIAN
 - ⑤ STEEL PLATE GUARD
 - ⑥ CONCRETE BARRIER
 - ⑦ AGGREGATE SHOULDER (TO BE CLEANED BY HAND TOOLS OF DEBRIS/LITTER)
 - ⑧ RAISED CONCRETE MEDIAN

NOTE:
SLOPE WALLS UNDER BRIDGES ARE NOT INCLUDED IN AREAS TO BE CLEANED.

REVISIONS	
NAME	DATE

ILLINOIS DEPARTMENT OF TRANSPORTATION
EXPRESSWAY AND ARTERIAL HIGHWAY
CLEANING (SWEEPING)

**TYPICAL
ARTERIAL CROSS SECTIONS
AND CURB RETURN DETAIL**

SCALE: VERT. _____
HORIZ. _____

DATE _____ DRAWN BY _____
CHECKED BY _____

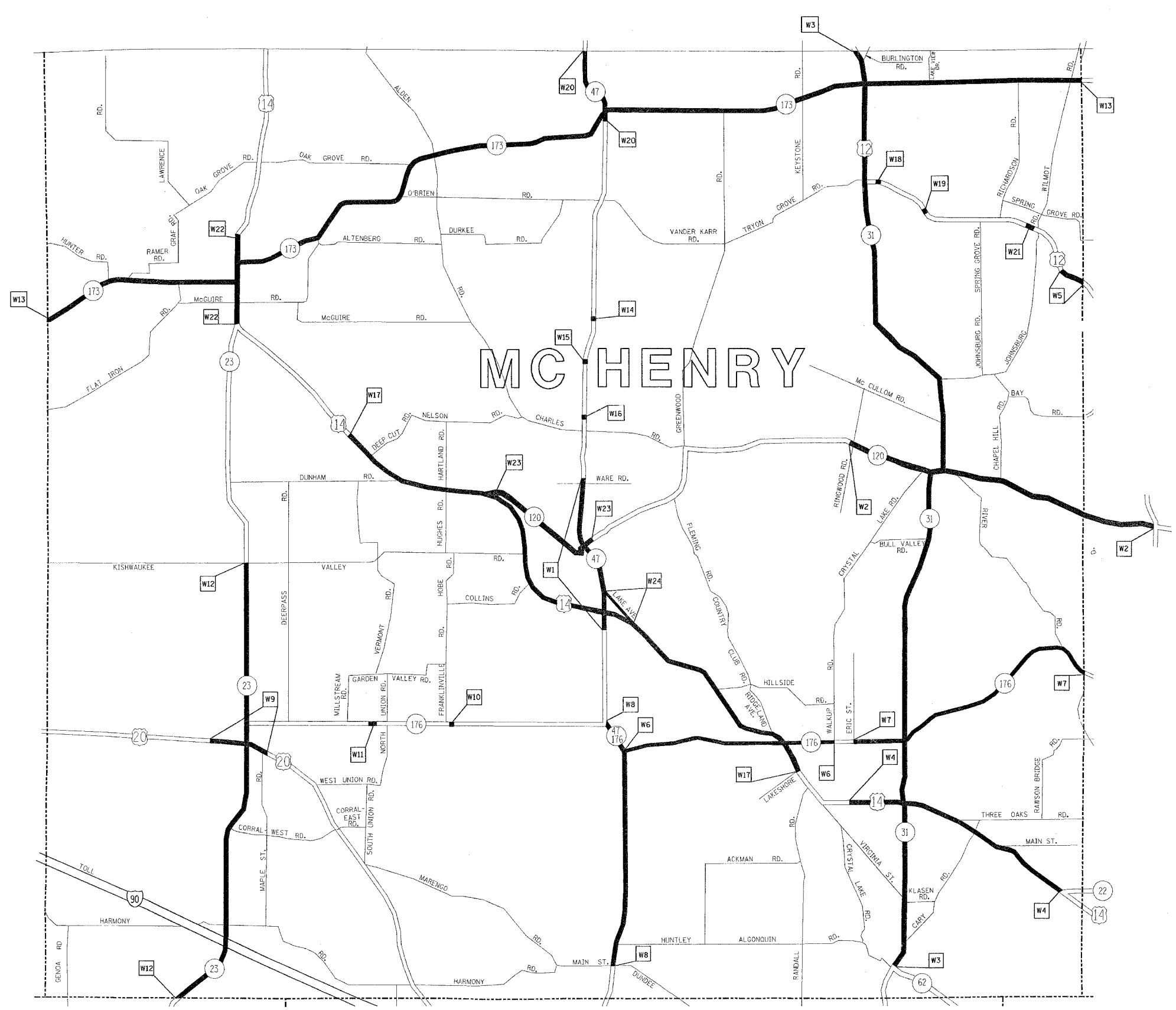
PLOT DATE = 9/24/2007
FILE NAME = c:\p\projects\127988\sweping\contract\2008.dgn
PLOT SCALE = 5/8"=1'-0"
USER NAME = mcljlp

CONTRACT NO. 62893				
F.A. RTE.	SECTION	COUNTY	TOTAL SHEETS	SHEET NO.
VAR.	2004-126 I	VARIOUS	16	5
STA.		TO STA.		
FED. ROAD DIST. NO.	ILLINOIS	FED. AID PROJECT		

*COOK, DU PAGE, KANE, LAKE, MC HENRY AND WILL



TEAM SECTION WOODSTOCK	KEY LOCATIONS W1 - W24
---------------------------	---------------------------



DISTRICT NO. 1

- STATE HIGHWAYS & EXPRESSWAYS WITHIN STATE JURISDICTION (EXCEPT TOLLWAYS)
- █ STATE HIGHWAYS & EXPRESSWAYS TO BE CLEANED
- - - FUTURE HIGHWAYS
- VARIOUS AGENCIES HIGHWAYS

REVISIONS	
NAME	DATE

ILLINOIS DEPARTMENT OF TRANSPORTATION

ARTERIAL CLEANING
LOCATION MAP
MC HENRY COUNTY
WOODSTOCK TEAM SECTION

SCALE: VERT. DRAWN BY
HORIZ. CHECKED BY
DATE

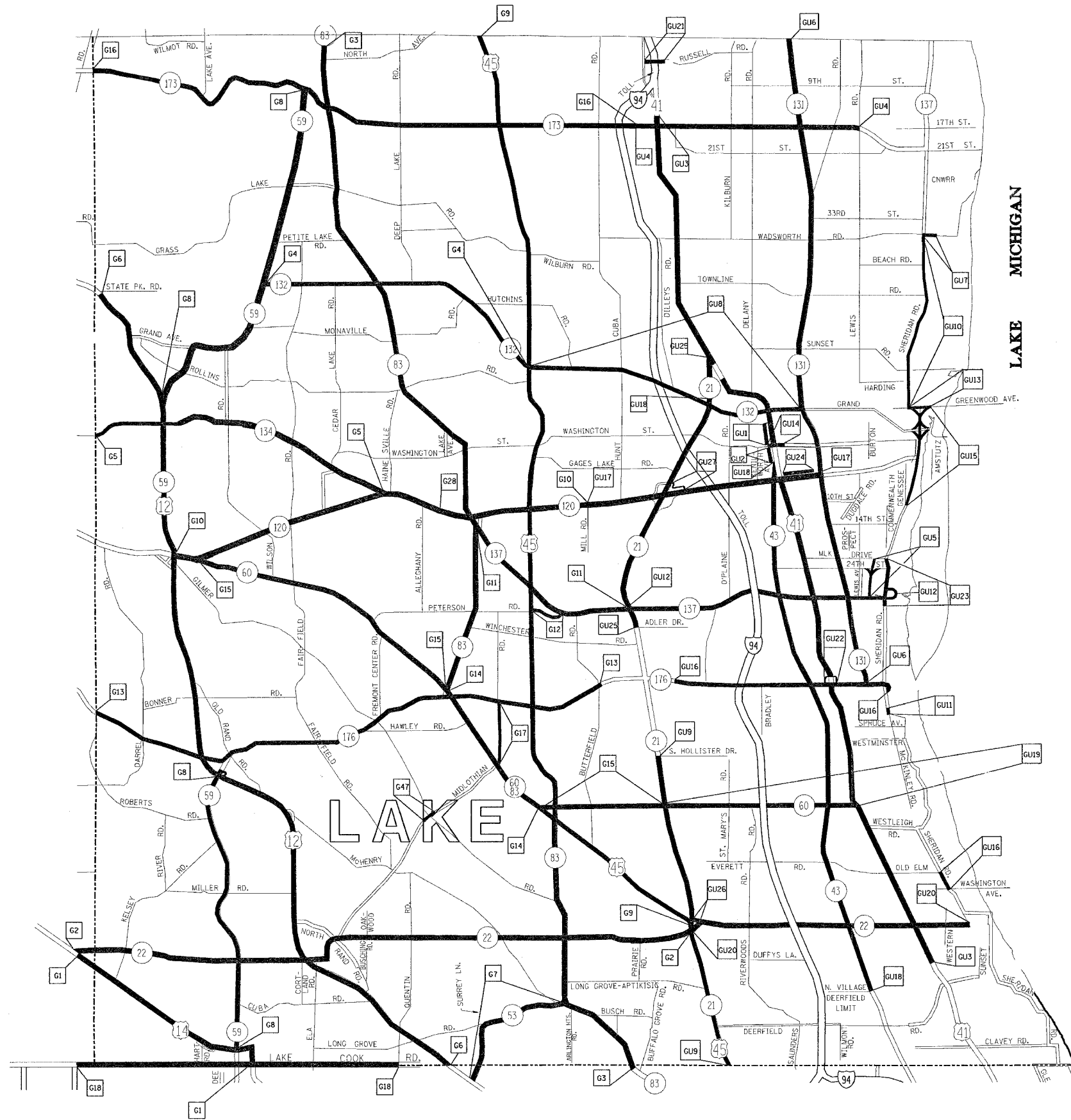
PLOT DATE = 9/24/2007
FILE NAME = c:\p\c\p\p\127988\veeping\constr\et22688.dgn
PLOT SCALE = 50.0000' / 1" IN.
USER NAME = mcjup

F.A. RTE.	SECTION	COUNTY	TOTAL SHEETS	SHEET NO.
VAR.	2004-126 1	VARIOUS	16	6
STA.		TO STA.		
FED. ROAD DIST. NO.		ILLINOIS FED. AID PROJECT		

*COOK, DU PAGE, KANE, LAKE, MC HENRY AND WILL



TEAM SECTION	KEY LOCATIONS
GRAYS LAKE	G1 - G18
GURNEE	GU1 - GU27



- DISTRICT NO. 21
- STATE HIGHWAYS & EXPRESSWAYS WITHIN STATE JURISDICTION (EXCEPT TOLLWAYS)
 - STATE HIGHWAYS & EXPRESSWAYS TO BE CLEANED
 - - - FUTURE HIGHWAYS
 - VARIOUS AGENCIES HIGHWAYS

REVISIONS	
NAME	DATE

ILLINOIS DEPARTMENT OF TRANSPORTATION
 ARTERIAL CLEANING
 LOCATION MAP
 LAKE COUNTY
 GRAYS LAKE AND GURNEE TEAM SECTIONS

SCALE: VERT.
 DATE: HORIZ.

DRAWN BY
 CHECKED BY

F.A. RTE.	SECTION	COUNTY	TOTAL SHEETS	SHEET NO.
VAR.	2004-126 1	VARIOUS	16	7

STA. TO STA.
 FED. ROAD DIST. NO. ILLINOIS FED. AID PROJECT

*COOK, DU PAGE, KANE, LAKE, MC HENRY AND WILL

TEAM SECTION ST. CHARLES
 KEY LOCATIONS SC1 - SC16

- DISTRICT NO. 1
- STATE HIGHWAYS & EXPRESSWAYS WITHIN STATE JURISDICTION (EXCEPT TOLLWAYS)
 - STATE HIGHWAYS & EXPRESSWAYS TO BE CLEANED
 - FUTURE HIGHWAYS
 - VARIOUS AGENCIES HIGHWAYS

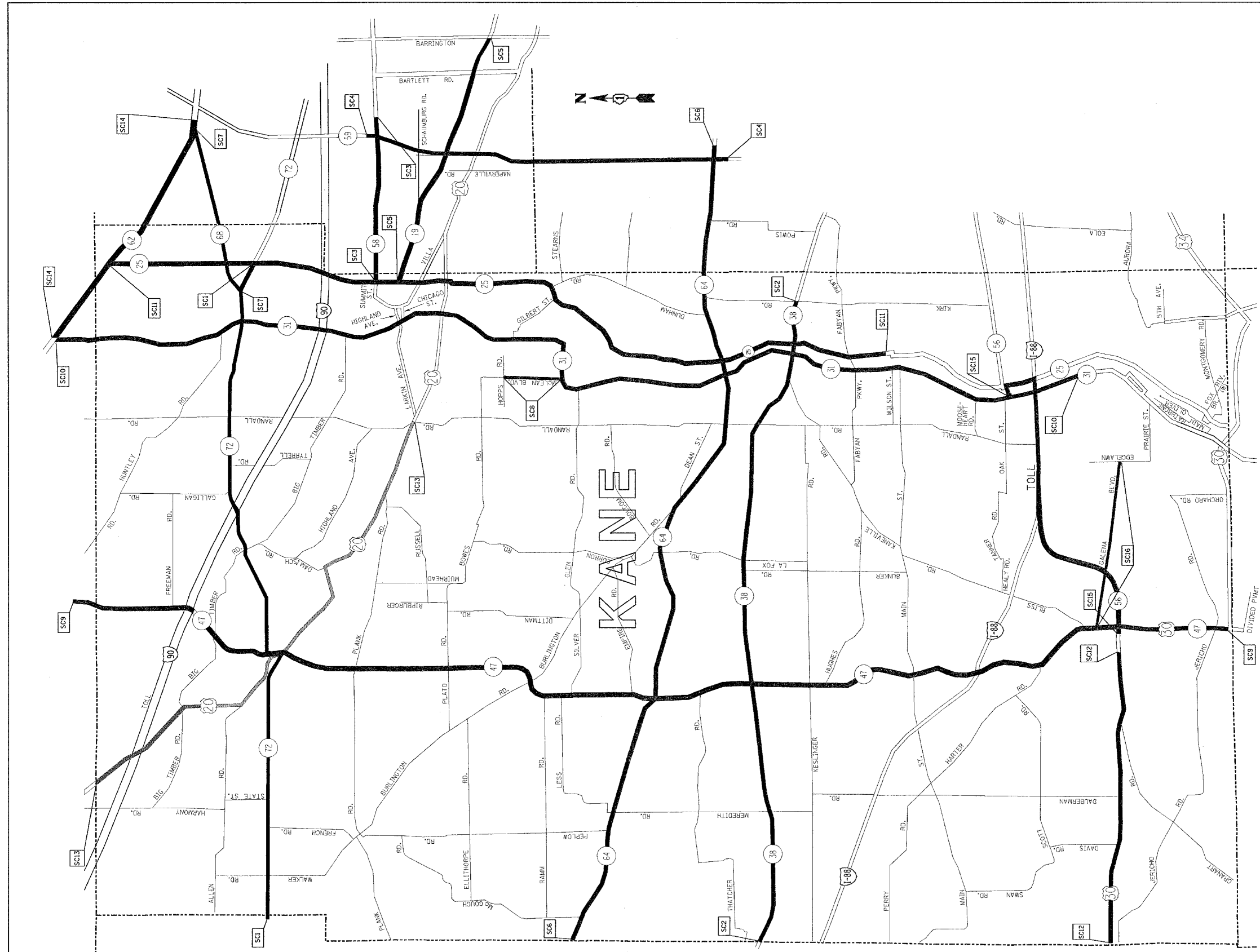
REVISIONS	
NAME	DATE

ILLINOIS DEPARTMENT OF TRANSPORTATION

ARTERIAL CLEANING
 LOCATION MAP
 KANE COUNTY
 ST. CHARLES TEAM SECTIONS

SCALE: VERT. DATE
 HORIZ. DRAWN BY
 CHECKED BY

PLOT DATE = 9/24/2007
 FILE NAME = c:\projects\127988\sewingpoint-ar2808.dgn
 PLOT SCALE = 50.0000 / 1 IN.
 USER NAME = msjulp

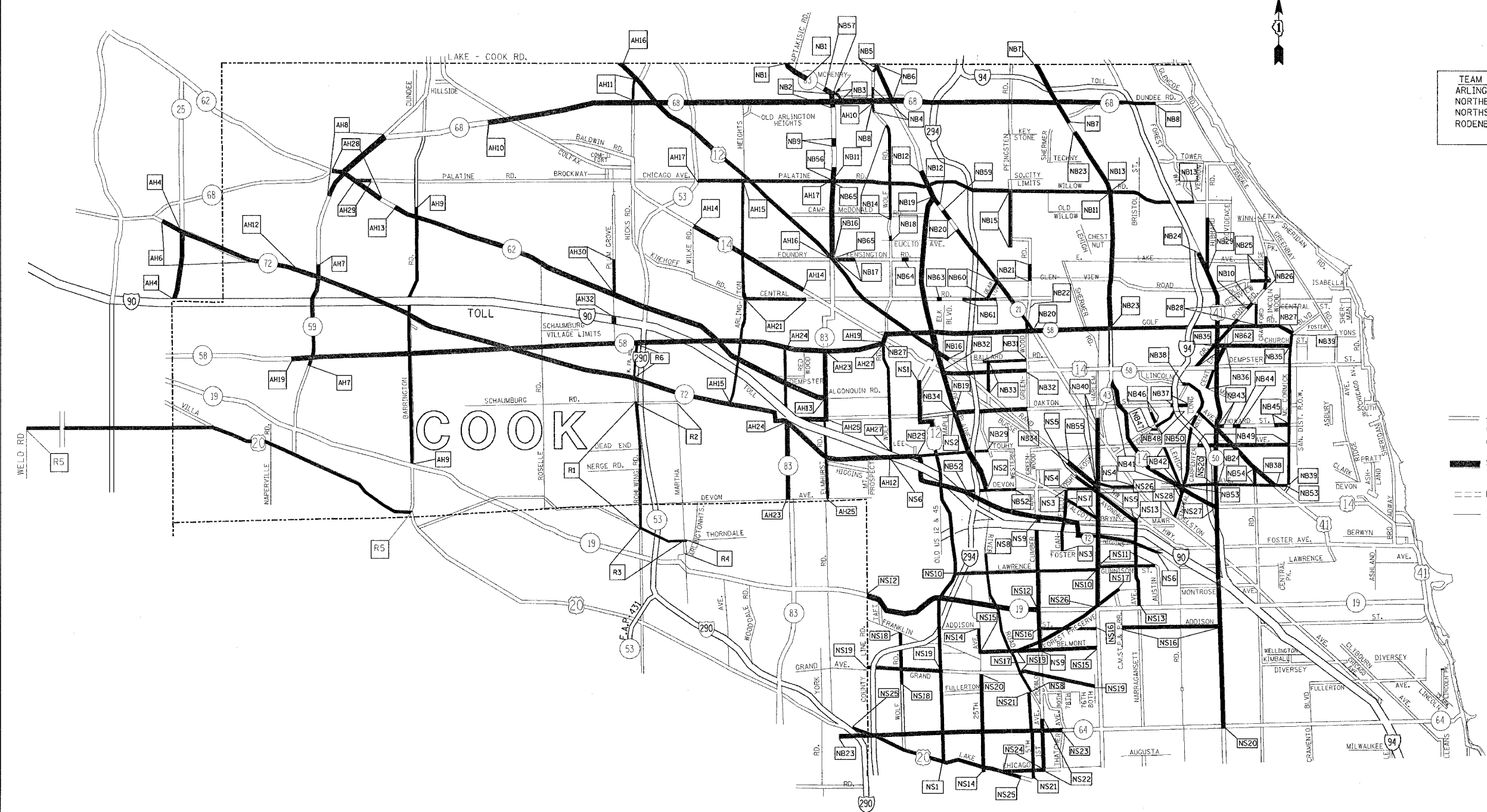


F.A. RTE.	SECTION	COUNTY	TOTAL SHEETS	SHEET NO.
VAR.	2004-126 I	VARIOUS	16	8
STA.		TO STA.		
FED. ROAD DIST. NO.		ILLINOIS FED. AID PROJECT		

*COOK, DU PAGE, KANE, LAKE, MC HENRY AND WILL



TEAM SECTION	KEY LOCATIONS
ARLINGTON HTS.	AH1-AH32
NORTHBROOK	NB1-NB65
NORTHSIDE	NS1-NS29
RODENBURG	R1-R6



- DISTRICT NO. 1**
- STATE HIGHWAYS & EXPRESSWAYS WITHIN STATE JURISDICTION (EXCEPT TOLLWAYS)
 - STATE HIGHWAYS & EXPRESSWAYS TO BE CLEANED
 - FUTURE HIGHWAYS
 - VARIOUS AGENCIES HIGHWAYS

REVISIONS	
NAME	DATE

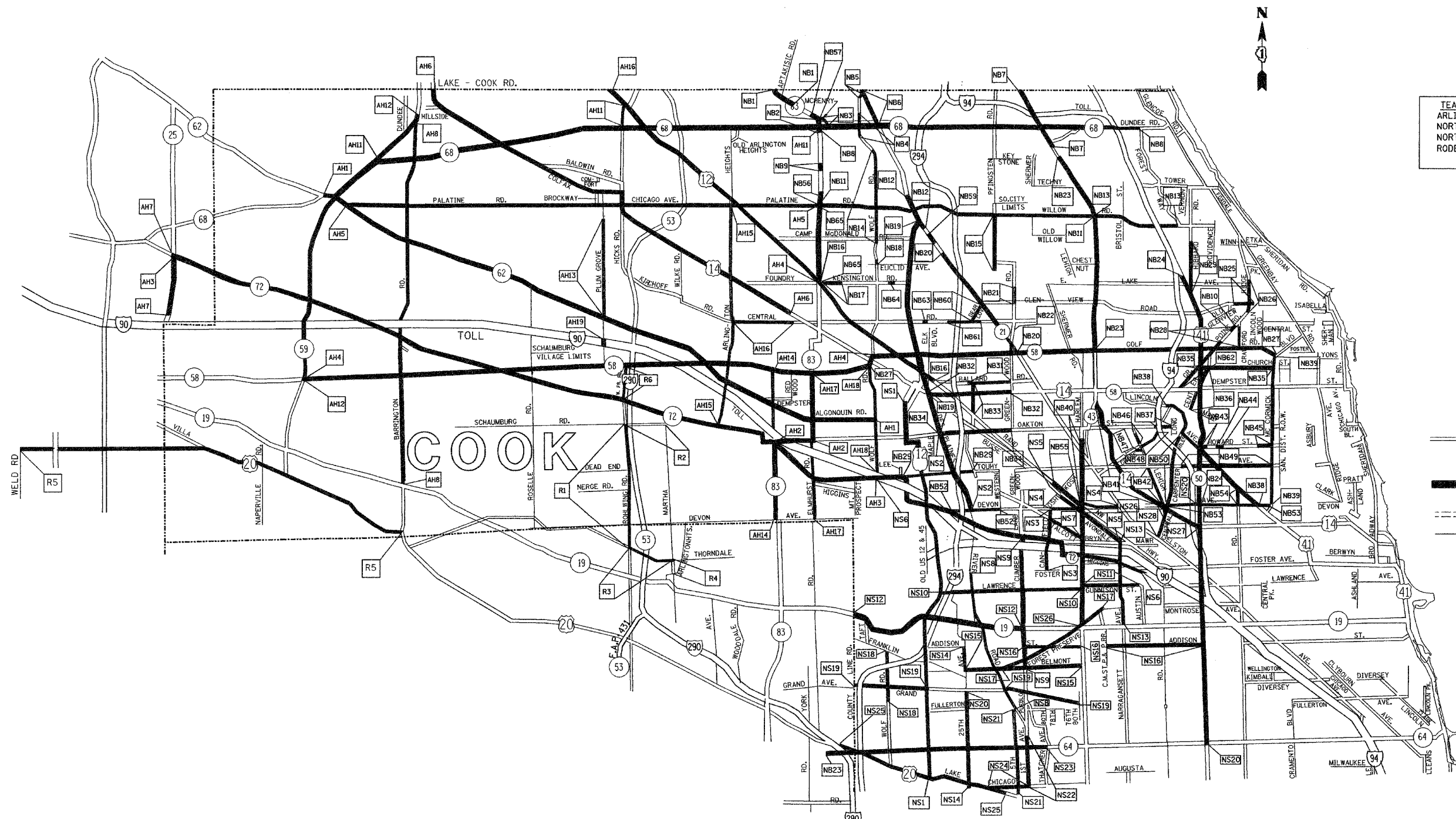
ILLINOIS DEPARTMENT OF TRANSPORTATION
 ARTERIAL CLEANING
 LOCATION MAP
 COOK COUNTY NORTH OF & INCLUDING
 ILL. RTE. 64 (NORTH AVE.)
 ARLINGTON, NORTHBROOK, NORTHSIDE
 AND I-290 ARTERIAL
 TEAM SECTIONS

SCALE: VERT. DATE
 HORIZ. CHECKED BY
 DRAWN BY

PLOT DATE = 9/24/2007
 FILE NAME = c:\p\proj\msta\m27988\weepings\cont\ac2888.dgn
 PLOT SCALE = 60,0000 / 1 IN.
 USER NAME = msjlp

F.A. RTE.	SECTION	COUNTY	TOTAL SHEETS	SHEET NO.
VAR.	2004-126 I	VARIOUS	16	8
STA.	TO STA.			
FED. ROAD DIST. NO.	ILLINOIS	FED. AID PROJECT		

*COOK, DU PAGE, KANE, LAKE, MC HENRY AND WILL



TEAM SECTION	KEY LOCATIONS
ARLINGTON HTS.	AH1-AH19
NORTHBROOK	NB1-NB65
NORTHSIDE	NS1-NS29
RODENBURG	R1-R6

- DISTRICT NO. 1
- STATE HIGHWAYS & EXPRESSWAYS WITHIN STATE JURISDICTION (EXCEPT TOLLWAYS)
 - STATE HIGHWAYS & EXPRESSWAYS TO BE CLEANED
 - FUTURE HIGHWAYS
 - VARIOUS AGENCIES HIGHWAYS

REVISIONS	
NAME	DATE

ILLINOIS DEPARTMENT OF TRANSPORTATION
 ARTERIAL CLEANING
 LOCATION MAP
 COOK COUNTY NORTH OF & INCLUDING
 ILL. RTE. 64 (NORTH AVE.)
 ARLINGTON, NORTHBROOK, NORTHSIDE
 AND I-290 ARTERIAL
 TEAM SECTIONS

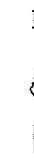
SCALE: VERT. _____
 HORIZ. _____
 DATE _____

DRAWN BY _____
 CHECKED BY _____

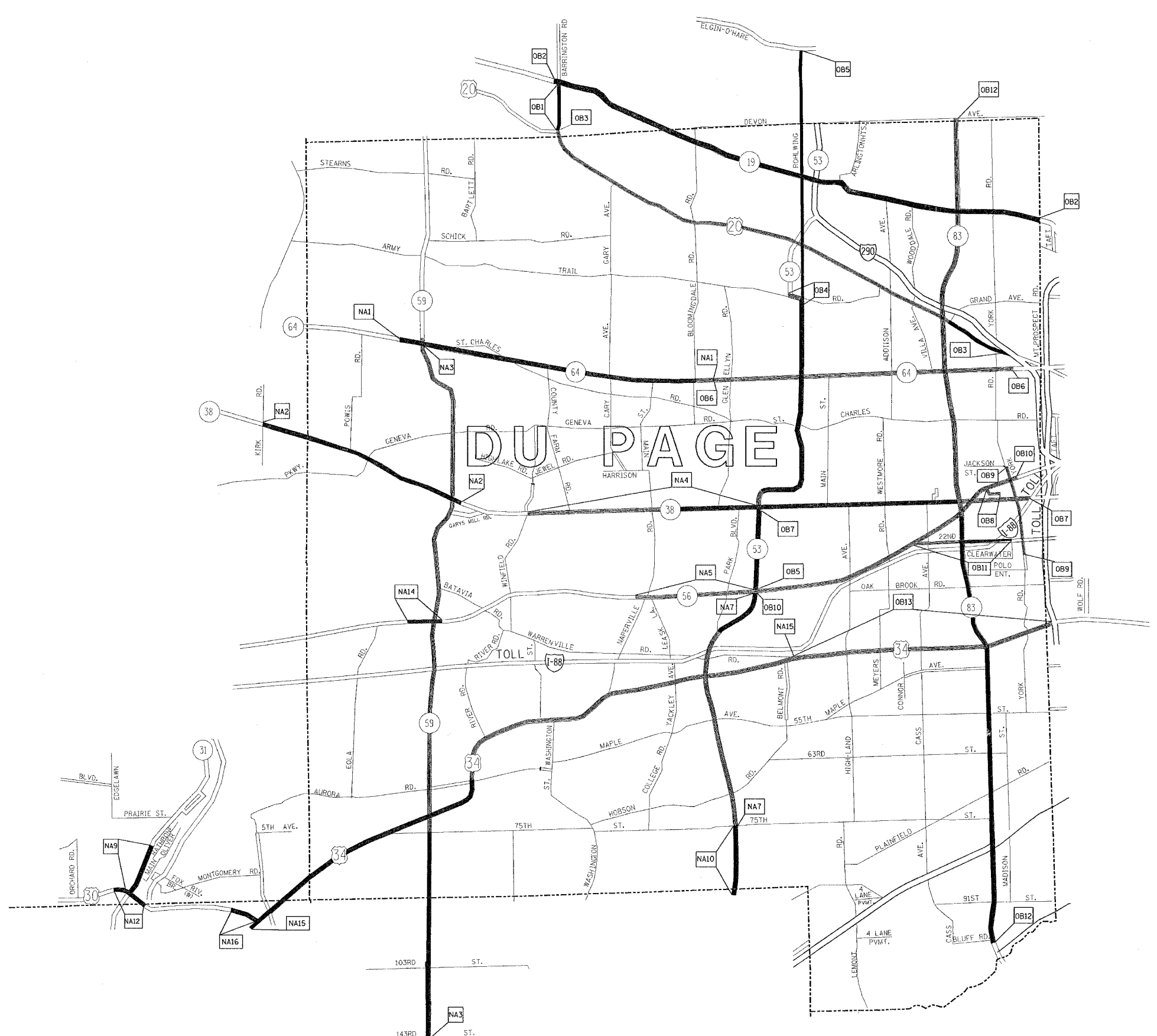
PLOT DATE = 10/16/2007
 PLOT SCALE = 62.500000
 USER NAME = m.djg

F.A. RTE.	SECTION	COUNTY	TOTAL SHEETS	SHEET NO.
VAR.	2004-126 I	VARIOUS	16	10
STA.		TO STA.		
FED. ROAD DIST. NO.	ILLINOIS	FED. AID PROJECT		

*COOK, DU PAGE, KANE, LAKE, MC HENRY AND WILL



TEAM SECTION	KEY LOCATIONS
OAKBROOK	OB1-OB13
NAPERVILLE	NA1-NA16



- DISTRICT NO. 1
- STATE HIGHWAYS & EXPRESSWAYS WITHIN STATE JURISDICTION (EXCEPT TOLLWAYS)
 - STATE HIGHWAYS & EXPRESSWAYS TO BE CLEANED
 - - - FUTURE HIGHWAYS
 - - - VARIOUS AGENCIES HIGHWAYS

REVISIONS	
NAME	DATE

ILLINOIS DEPARTMENT OF TRANSPORTATION

ARTERIAL CLEANING
LOCATION MAP
DU PAGE COUNTY
OAKBROOK AND NAPERVILLE TEAM SECTIONS

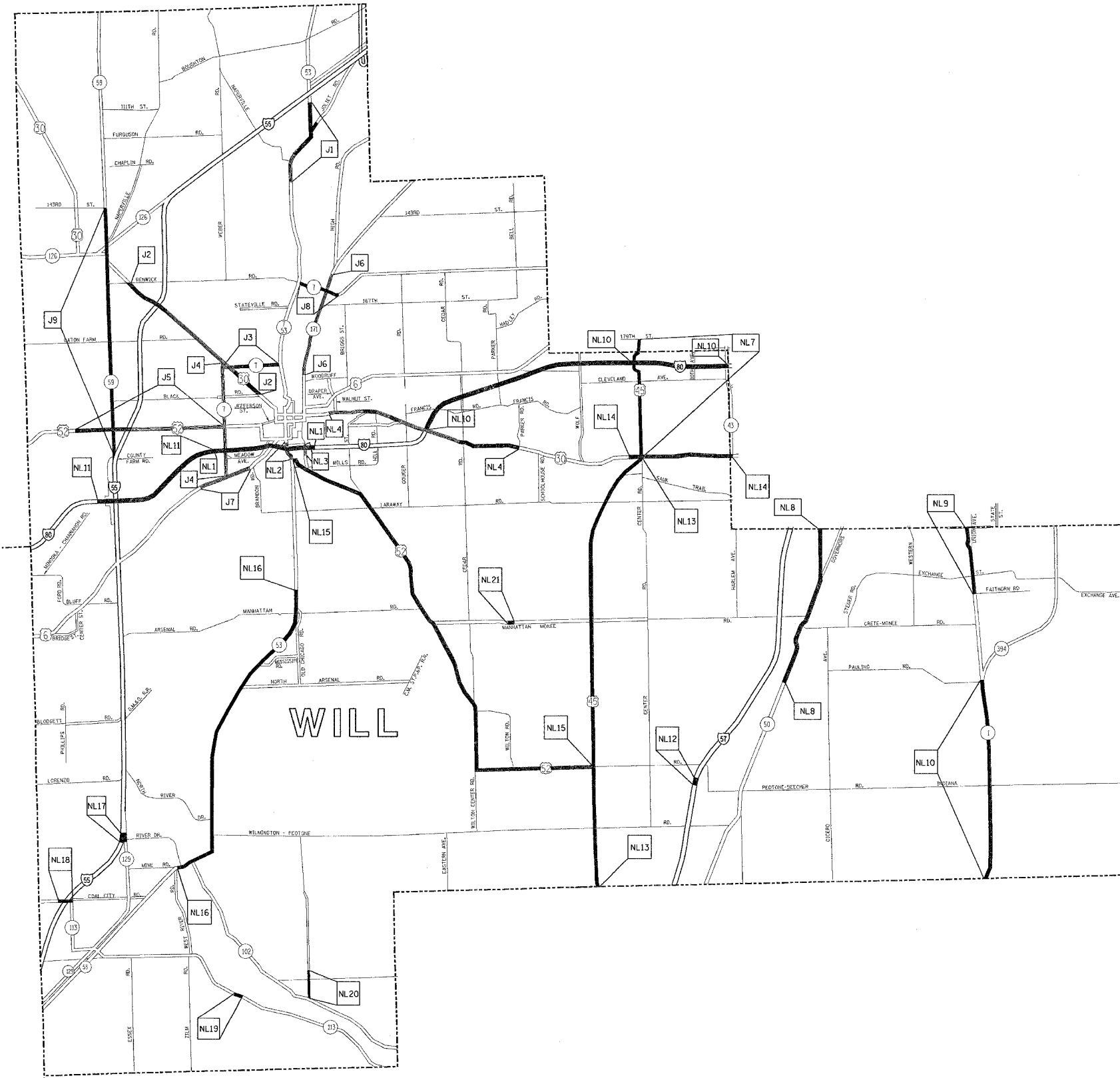
SCALE: VERT. _____
HORIZ. _____

DATE _____ DRAWN BY _____
CHECKED BY _____

PLOT DATE = 9/24/2007
FILE NAME = c:\projects\127188\weepingconstrac2008.dgn
PLOT SCALE = 3000000 / IN.
USER NAME = mngajp

CONTRACT NO. 62893			
F.A. RTE.	SECTION	COUNTY	TOTAL SHEET NO.
VAR.	2004-126 I	VARIOUS	16 11
STA.		TO STA.	
FED. ROAD DIST. NO.	ILLINOIS	FED. AID PROJECT	

* COOK, DU PAGE, KANE, LAKE, MC HENRY AND WILL



TEAM SECTION	KEY LOCATIONS
JOLIET	J1 - J9
NEW LENOX	NL1 - NL21

- DISTRICT NO. 1
- STATE HIGHWAYS & EXPRESSWAYS WITHIN STATE JURISDICTION (EXCEPT TOLLWAYS)
 - STATE HIGHWAYS & EXPRESSWAYS TO BE CLEANED
 - - - FUTURE HIGHWAYS
 - VARIOUS AGENCIES HIGHWAYS

REVISIONS	
NAME	DATE

ILLINOIS DEPARTMENT OF TRANSPORTATION
 ARTERIAL CLEANING
 LOCATION MAP
 WILL COUNTY
 JOLIET AND NEW LENOX TEAM SECTION

SCALE: VERT. _____
 HORIZ. _____

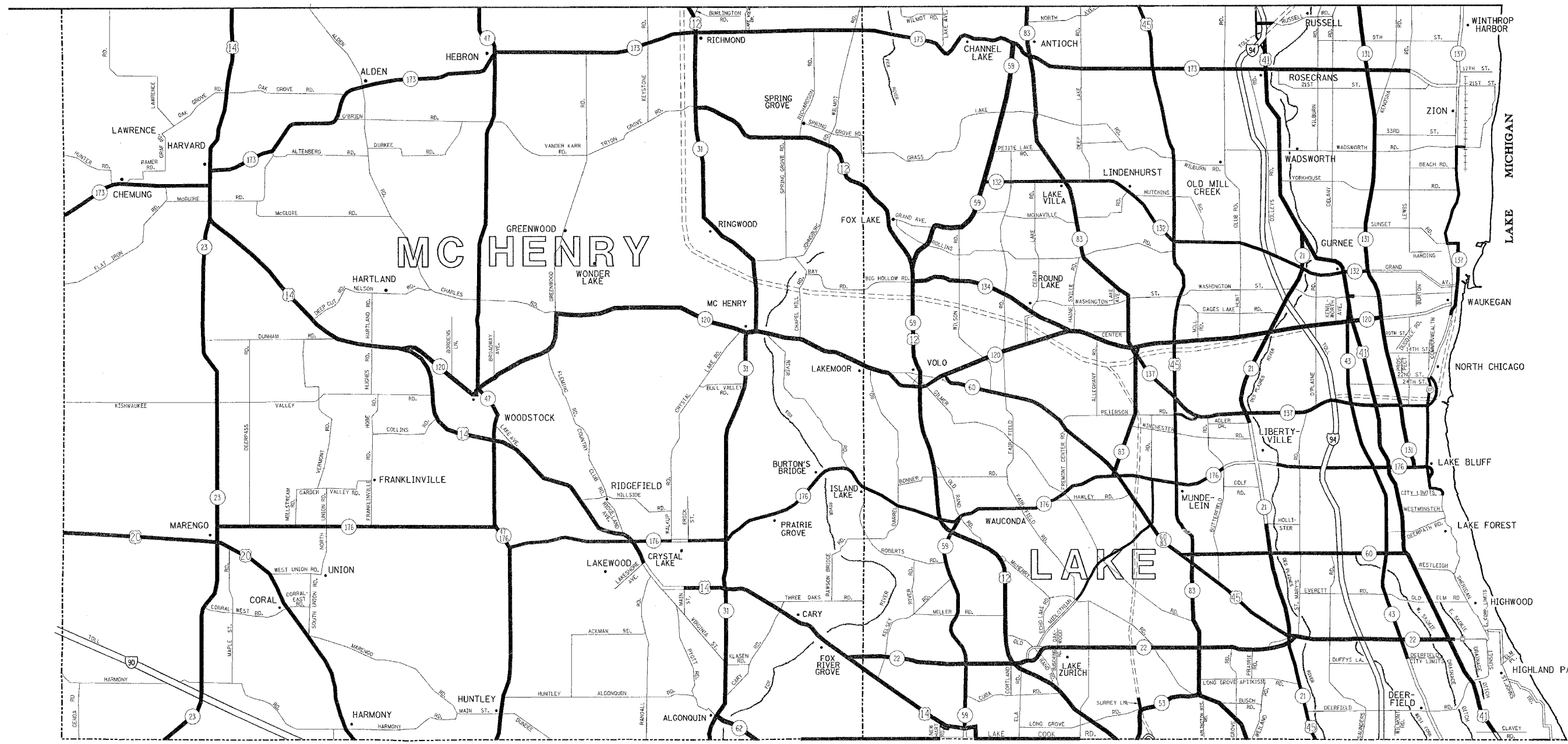
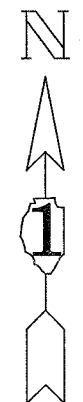
DATE _____ DRAWN BY _____
 CHECKED BY _____

PLOT DATE = 9/24/2007
 FILE NAME = c:\projects\127988\weepingpoint-ac22008.dgn
 PLOT SCALE = 56.0000 / 1 IN.
 USER NAME = mlgjlp

WISCONSIN

CONTRACT NO. 62893
 I.A. SECTION COUNTY TOTAL SHEETS SHEET NO.
 RTE. 2004-126 I * 16 12
 STA. TO STA.
 FED. ROAD DIST. NO. ILLINOIS FED. AID PROJECT
 *COOK, DU PAGE, KANE, LAKE, MC HENRY AND WILL

DISTRICT NO. 1 ARTERIAL MAINTENANCE DESIGNATIONS

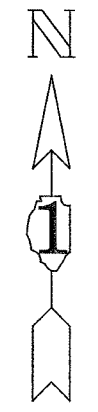
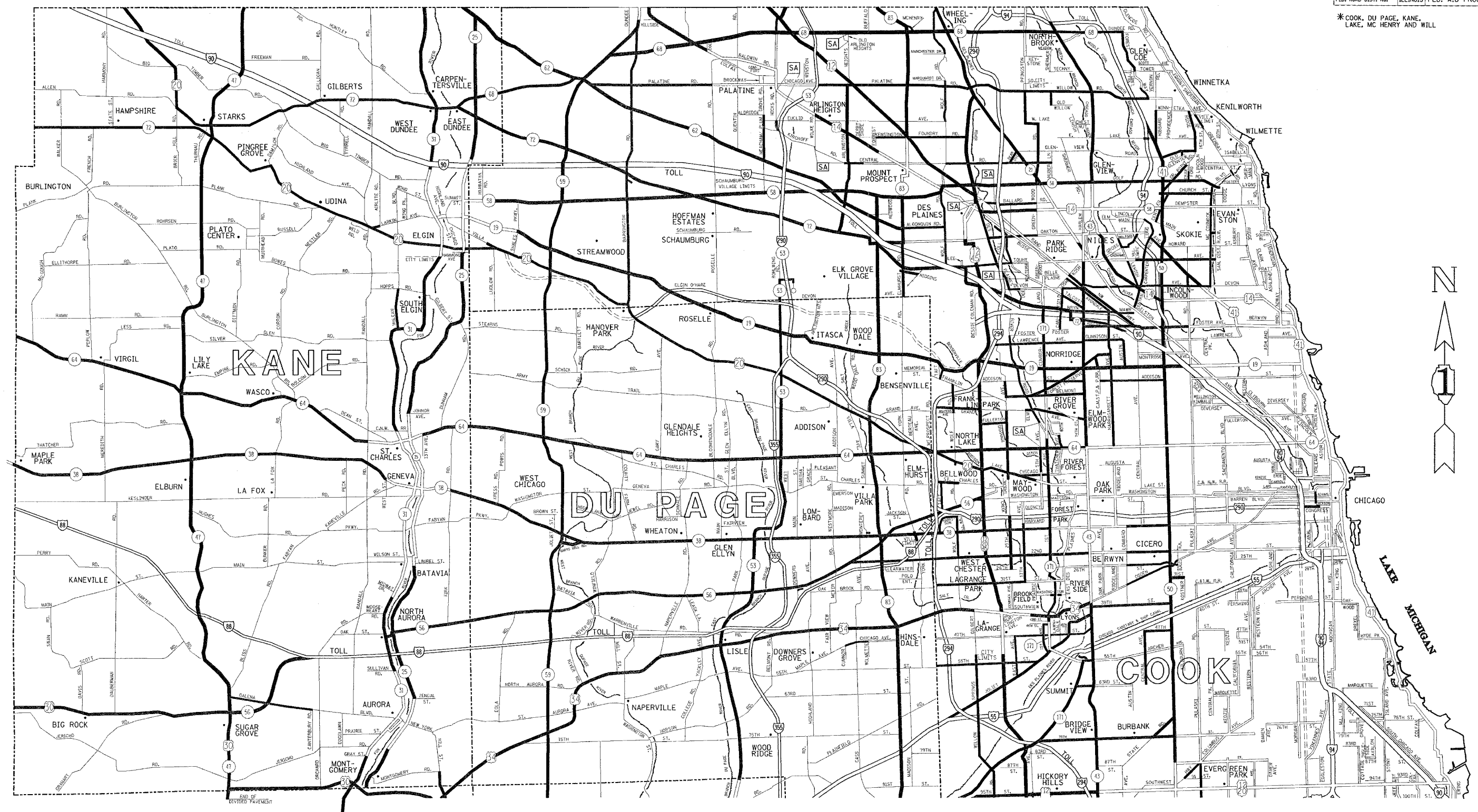


PLOT DATE = 9/24/2007
 FILE NAME = c:\pws\msta\m127988\wmapimgprint-ac2208b.dgn
 PLOT SCALE = 50.0000 / 1 IN.
 USER NAME = mshjlp

REVISIONS	
NAME	DATE

ILLINOIS DEPARTMENT OF TRANSPORTATION
 ARTERIAL ROADWAY LABORING LOCATION MAP
 SCALE: VERT. DATE
 HORIZ. DATE
 DRAWN BY
 CHECKED BY

* COOK, DU PAGE, KANE, LAKE, MC HENRY AND WILL



DISTRICT NO. 1
 ARTERIAL MAINTENANCE DESIGNATIONS

REVISIONS	
NAME	DATE

ILLINOIS DEPARTMENT OF TRANSPORTATION
 ARTERIAL ROADWAY LABORING LOCATION MAP
 SCALE: VERT. HORIZ.
 DATE
 DRAWN BY
 CHECKED BY

FILE NAME = 9/24/2007
 FILE NAME = c:\pro\pctsa\127983\aseeping\pctsa\2008.dgn
 PLOT SCALE = 50.0000 / IN.
 USER NAME = mcdjja

F.A. RTE.	SECTION	COUNTY	TOTAL SHEETS	SHEET NO.
2004-126 I	*		16	14

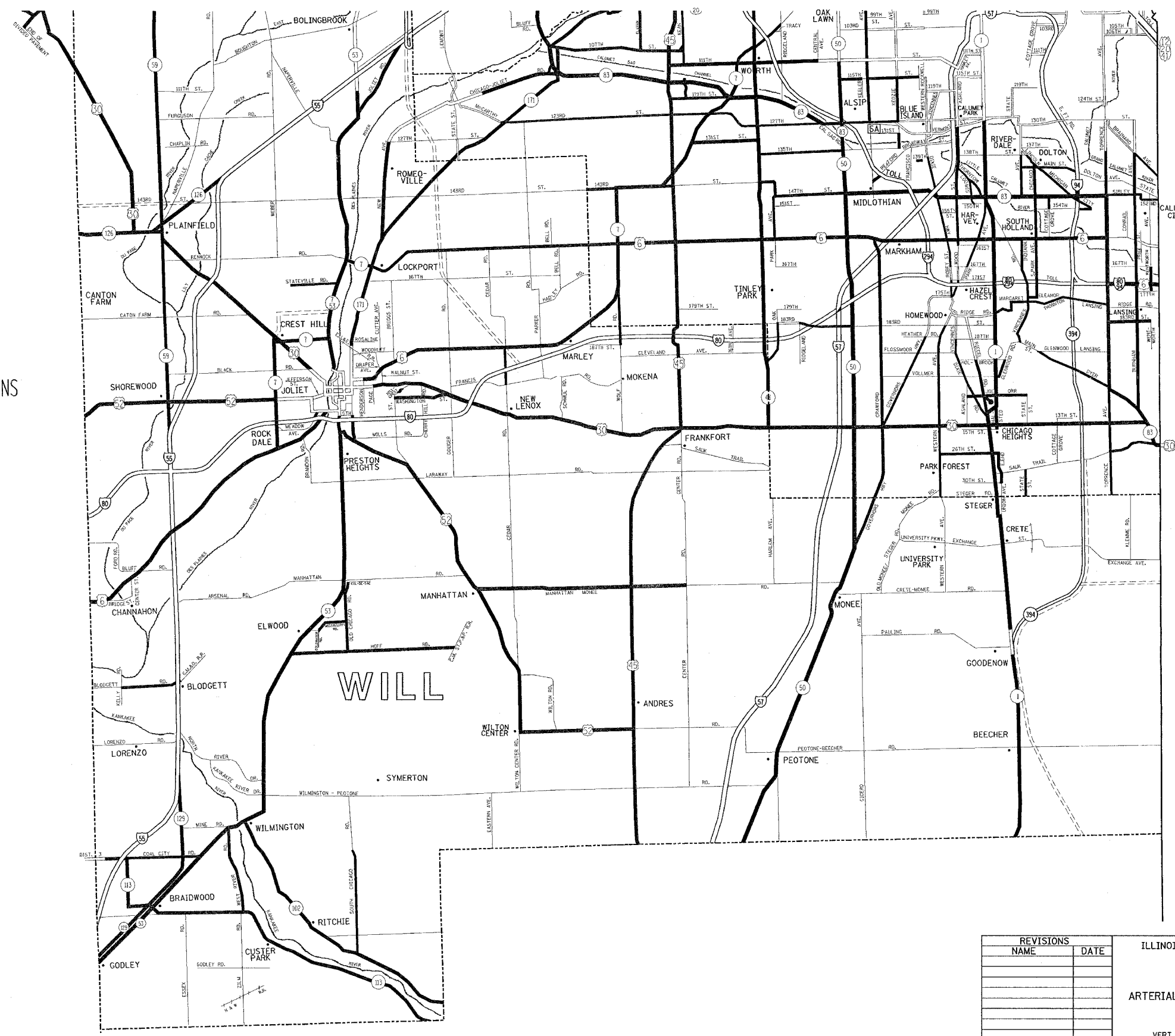
STA. TO STA.
FED. ROAD DIST. NO. ILLINOIS FED. AID PROJECT

* COOK, DU PAGE, KANE, LAKE, MC HENRY AND WILL

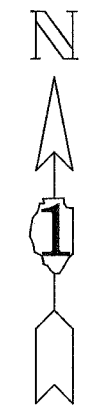
KENDALL

DISTRICT NO. 1

ARTERIAL MAINTENANCE DESIGNATIONS



INDIANA



REVISIONS	
NAME	DATE

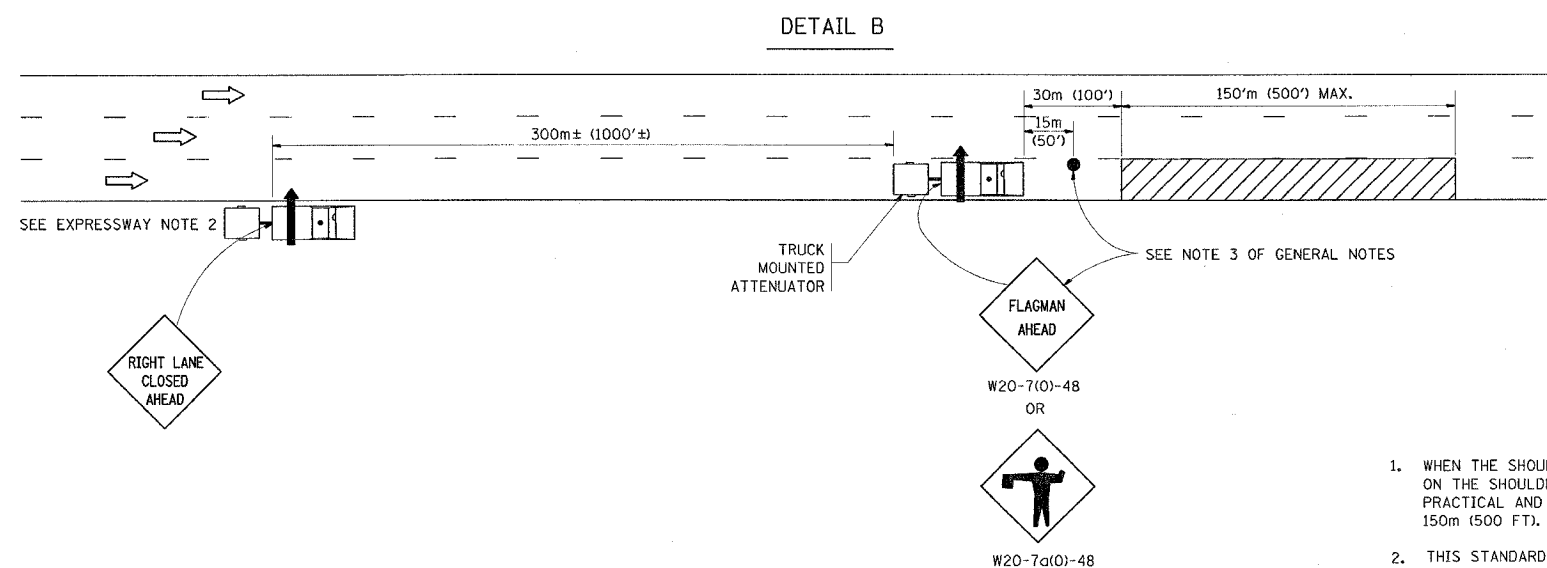
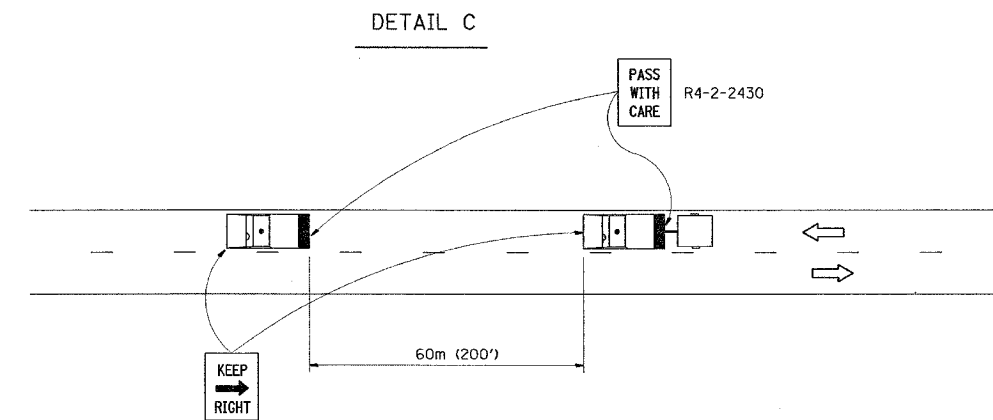
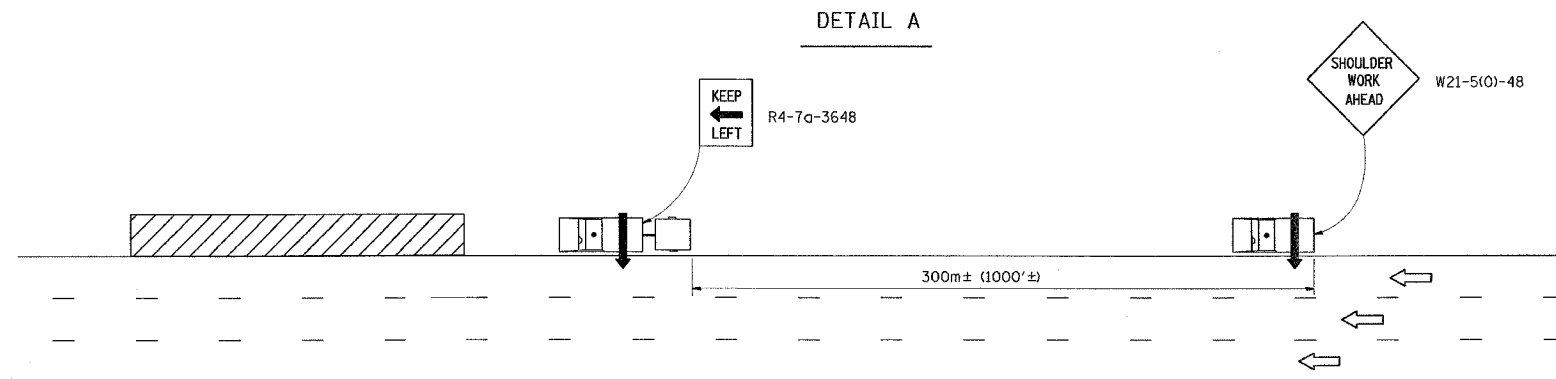
ILLINOIS DEPARTMENT OF TRANSPORTATION
ARTERIAL ROADWAY LABORING LOCATION MAP

SCALE: VERT. HORIZ. DATE DRAWN BY CHECKED BY

PLOT DATE = 9/24/2007
FILE NAME = c:\p\proj\14\m127988\wmaping\cont\ast2868.dgn
PLOT SCALE = 5/8"=1'-0"
USER NAME = mshjlp

F.A. RTE.	SECTION	COUNTY	TOTAL SHEETS	SHEET NO.
VAR.	2004-126 I	VARIOUS	16	15
STA.		TO STA.		
FED. ROAD DIST. NO.		ILLINOIS FED. AID PROJECT		

*COOK, DU PAGE, KANE, LAKE, MC HENRY AND WILL



EXPRESSWAY NOTES

1. A FOLLOW VEHICLE(S) WITH ARROW BOARD IS REQUIRED AT ALL TIMES.
2. TRUCK MOUNTED ATTENUATORS ARE REQUIRED ON ALL CLEANING OPERATIONS.
3. WHEN WITHIN THE INNER CITY LIMITS OR ON SHOULDERS THAT ARE TOO NARROW FOR THE FOLLOW VEHICLE, THE SECOND FOLLOW VEHICLE SHALL HAVE A TRUCK MOUNTED ATTENUATOR.
4. WHEN WORKING ON RAMP, THE SECOND FOLLOW VEHICLE SHALL REMAIN ON THE MAINLINE SHOULDER IN ADVANCE OF THE RAMP. THE FOLLOW VEHICLE SHALL HAVE A "RAMP WORK AHEAD" SIGN.
5. SIGN CLEANING SHALL HAVE THE SAME TRAFFIC CONTROL AND PROTECTION REQUIREMENTS AS OUTLINED FOR SWEEPING OPERATIONS.

ARTERIAL NOTES

1. DETAIL C SHALL APPLY
2. TRUCK MOUNTED ATTENUATORS ARE REQUIRED ON ALL CLEANING OPERATIONS.

GENERAL NOTES

1. WHEN THE SHOULDER DOES NOT EXIST, OR IS NARROW, FOLLOWING VEHICLES SHOWN ON THE SHOULDER SHALL RIDE AS CLOSE TO THE EDGE OF THE TRAVELLED WAY AS PRACTICAL AND THE SPACING TO THE NEXT VEHICLE REDUCED TO APPROXIMATELY 150m (500 FT).
2. THIS STANDARD IS ALSO APPLICABLE WHEN WORK IS BEING PERFORMED IN THE LEFT LANE(S) OR ON THE MEDIAN SHOULDER. UNDER THESE CONDITIONS, "KEEP RIGHT" SIGNS SHALL BE SUBSTITUTED FOR "KEEP LEFT" SIGNS AND ARROW BOARD INDICATIONS SHALL BE DIRECTED TO THE RIGHT.
3. WHEN FLAGGERS ARE SPECIFIED, FLAGGER SIGNS SHALL BE PLACED AS SHOWN.
4. WHEN USING DETAIL B, OR WHERE WORKERS ARE IN THE LEAD VEHICLE, OTHER THAN IN THE CAB, THE FOLLOWING VEHICLE SHALL BE POSITIONED BEHIND THE LEAD VEHICLE AND THE SPACING REDUCED TO APPROXIMATELY 150m (500 FT).
5. LONGITUDINAL DISTANCES MAY BE ADJUSTED TO FIT FIELD CONDITIONS. THE LATERAL PLACEMENT OF THE FLAGGER MAY BE VARIED FROM THAT SHOWN.
6. WATER TRUCKS USED TO CONTROL DUST PROPAGATION ARE ALLOWED TO OPERATE BY THEMSELVES. THEY SHALL AVOID SUDDEN STOPS.
7. ALL VEHICLES SHALL HAVE HEADLIGHTS AND EMERGENCY FLASHERS OPERATING AND SHALL DISPLAY AN AMBER COLORED OSCILLATING, ROTATING OR FLASHING LIGHT(S). AT LEAST ONE AMBER LIGHT IS TO BE VISIBLE FROM ANY DIRECTION.
8. ALL SWEEPERS, SIGN CLEANING TRUCKS, WATER TRUCKS AND FOLLOW VEHICLES SHALL HAVE ARROW BOARDS, AND APPROPRIATE SIGNS.

SYMBOLS

- ARROW BOARD (HAZARD MODE ONLY)
- ARROW BOARD
- FLAGGER WITH TRAFFIC CONTROL SIGNS
- WORK AREA
- TRUCK WITH FLASHING AMBER LIGHT
- TRUCK WITH FLASHING AMBER LIGHT AND TRUCK MOUNTED ATTENUATOR

REVISIONS	
NAME	DATE

ILLINOIS DEPARTMENT OF TRANSPORTATION
**DISTRICT ONE DETAILS:
 TYPICAL APPLICATION OF
 TRAFFIC CONTROL DEVICES
 HIGHWAY OPERATIONS-DAY TIME ONLY**

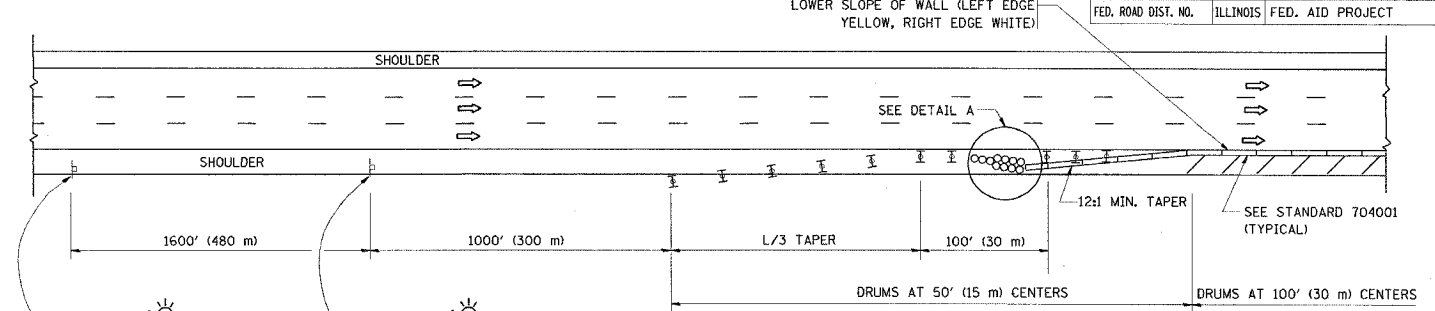
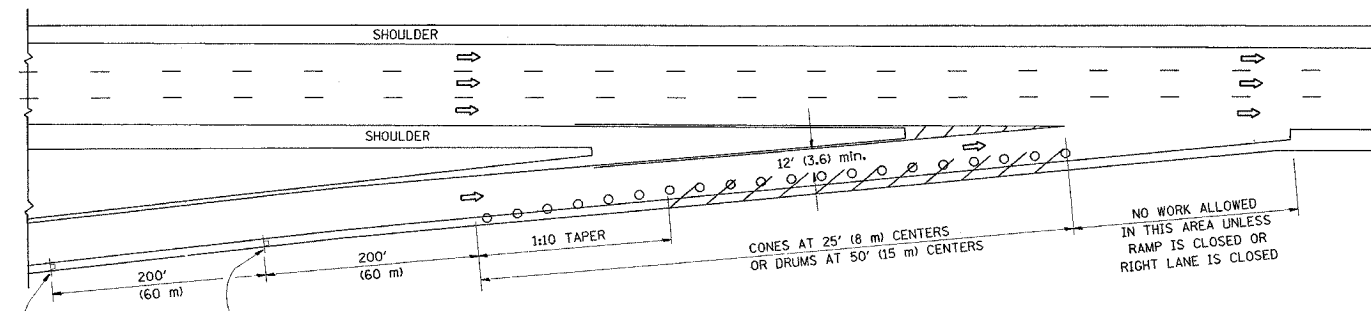
SCALE: VERT.
 HORIZ.
 DATE

DRAWN BY
 CHECKED BY

F.A. RTE.	SECTION	COUNTY	TOTAL SHEETS	SHEET NO.
VAR.	2004-126 I	VAR.	16	16
STA.	TO STA.			
FED. ROAD DIST. NO.	ILLINOIS	FED. AID PROJECT		

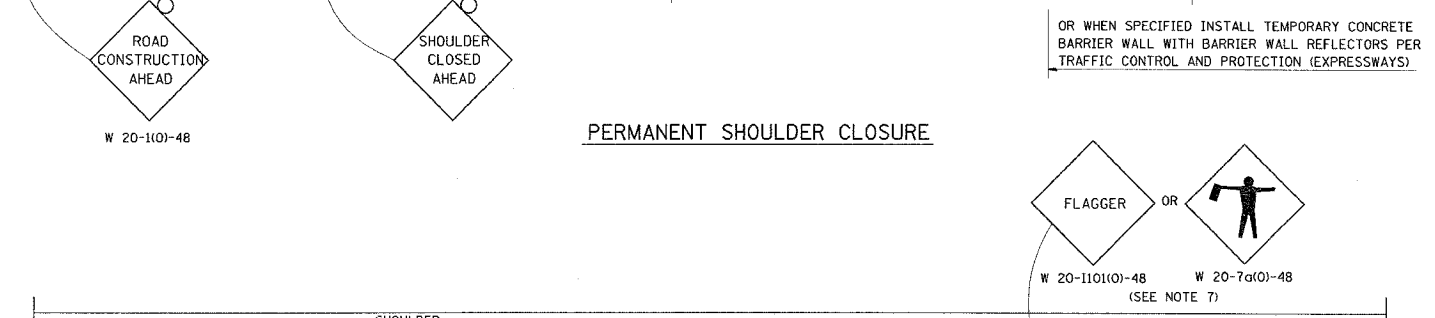
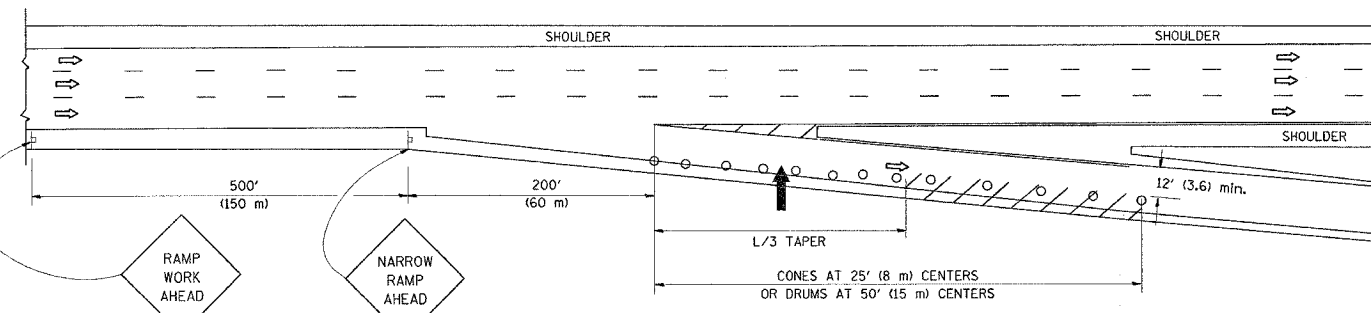
PARTIAL RAMP CLOSURE DETAILS

SHOULDER CLOSURE DETAILS



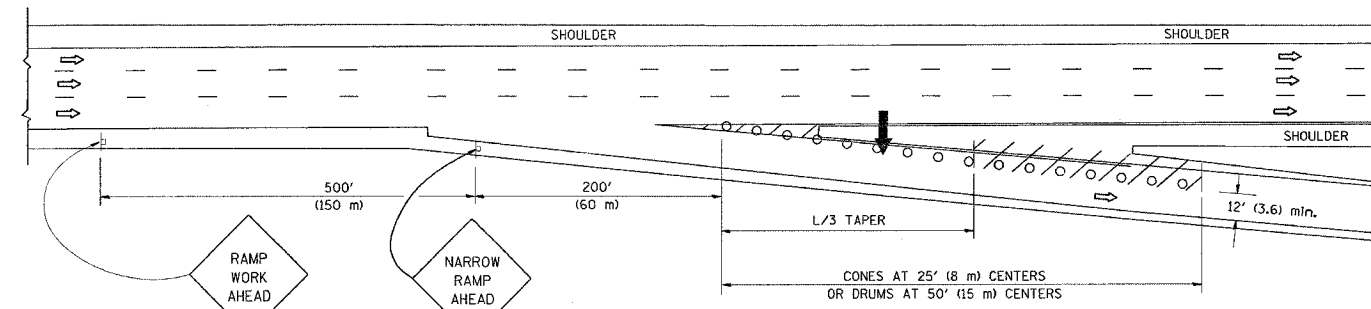
TYPICAL ENTRANCE RAMP

PERMANENT SHOULDER CLOSURE



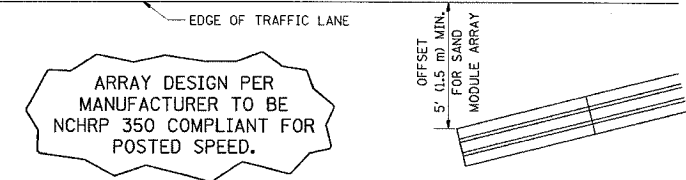
TYPICAL EXIT RAMP

DAYTIME SHOULDER CLOSURE



TYPICAL EXIT RAMP

THIS DETAIL IS USED WHERE:
 1. VEHICLES, EQUIPMENT, WORKERS OR THEIR ACTIVITIES ENCRANCH IN AN AREA CLOSER THAN 15' (4.5 m) TO THE EDGE OF PAVEMENT FOR A PERIOD IN EXCESS OF 15 MINUTES.



DETAIL "A" IMPACT ATTENUATOR, TEMPORARY (SEE NOTE 5)

SYMBOLS

- ARROWBOARD
- WORK AREA
- SIGN ON PORTABLE OR PERMANENT SUPPORT
- FLAGGER WITH CONTROL SIGN
- TYPE II BARRICADE, DRUM OR VERTICAL BARRICADE WITH STEADY BURN MONO-DIRECTIONAL LIGHT
- CONE, DRUM OR BARRICADE

GENERAL NOTES

1. THE "L" DISTANCE EQUALS:

SPEED LIMIT	FORMULAS
45 mph (80 km/h) OR GREATER:	METRIC ENGLISH
	$L = 0.65(W)(S)$ $L = (W)(S)$

W = WIDTH OF OFFSET IN FEET (METERS)
 S = NORMAL POSTED SPEED MPH (KM/H)
2. PLASTIC DRUMS WITH HIGH PERFORMANCE REFLECTIVE SHEETING AND STEADY BURNING LIGHTS ARE REQUIRED FOR ALL NIGHTTIME CLOSURES.
3. ALL SIGNS SHALL BE POST MOUNTED IF THE CLOSURE TIME EXCEEDS FOUR DAYS.
4. FLASHING LIGHTS SHALL BE USED DURING THE HOURS OF DARKNESS AND SHALL BE INSTALLED ABOVE THE FIRST TWO SETS OF SIGNS.

5. THE IMPACT ATTENUATOR, TEMPORARY IS NOT REQUIRED WHEN THE TEMPORARY CONCRETE BARRIER WALL IS PROTECTED BY OR IS TIED INTO THE EXISTING GUARDRAIL. IF OFFSET IS LESS THAN 5 FEET USE "TRAFFIC BARRIER TERMINAL, TYPE III, TEMPORARY" DEVICE TO MEET NCHRP350 FOR POSTED SPEED.
6. AUTHORIZATION FROM THE DISTRICT'S BUREAU OF TRAFFIC IS REQUIRED FOR ALL FREEWAY CLOSURES.
7. THE FLAGGER AND FLAGGER SIGN ARE REQUIRED AT THE ABOVE WORK SITES WHEN:
 - a. FOUR OR MORE WORK VEHICLES ENTER THE TRAFFIC LANES IN A ONE HOUR PERIOD.
 - b. THE WORK AVTIVITY REQUIRES FREQUENT ENCRANCHMENT INTO THE LANE OPEN TO TRAFFIC.
 THE FLAGGER SHALL BE STATIONED APPROXIMATELY 100' (30 m) TO 200' (60 m) IN ADVANCE OF THE WORKERS.

ALL DIMENSIONS ARE IN INCHES (MILLIMETERS) UNLESS OTHERWISE SHOWN.

REVISIONS	
NAME	DATE
DWS	11/96
JAF	12/02
NCHRP 350	04/03
JAF	2/06
SPB	1/07

ILLINOIS DEPARTMENT OF TRANSPORTATION
 TRAFFIC CONTROL DETAILS
 FOR FREEWAY
 SHOULDER CLOSURES
 PARTIAL RAMP CLOSURES

SCALE: NONE

DESIGNED BY: DWS
 DRAWN BY:
 CHECKED BY: