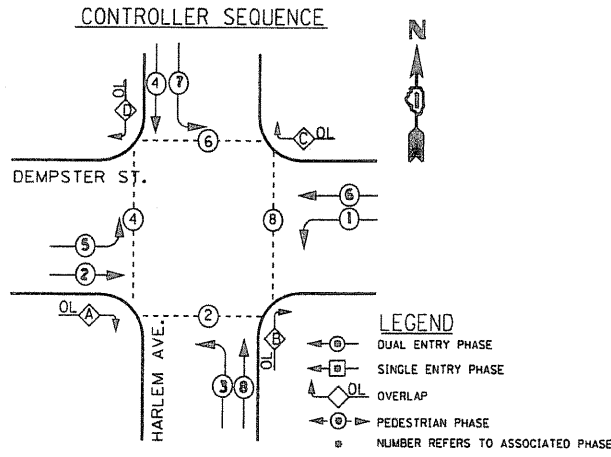


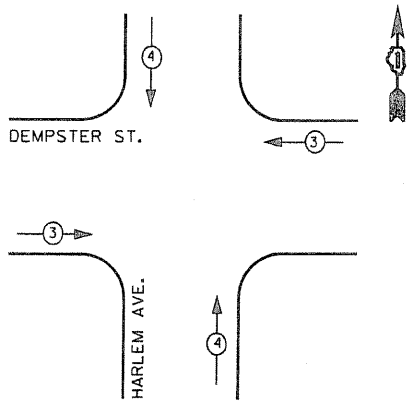
F.A.P. RTE.	SECTION	COUNTY	TOTAL SHEETS	SHEET NO.
348	2005-007 TS	COOK	26	16
STA.	TO STA.			
FED. ROAD DIST. NO.	ILLINOIS FED. AID PROJECT			
CONTRACT NO. 62918				

**NOTE:**  
NO OTHER MODIFICATIONS WERE NEEDED TO TRAFFIC SIGNALS THEREFORE NO TRAFFIC PLAN SHEET AVAILABLE FOR THIS INTERSECTION.



**EXISTING PHASE DESIGNATION DIAGRAM**

**EMERGENCY VEHICLE PREEMPTION SEQUENCE**



EXISTING PRIORITY LANES		
PRIORITY LANE INTERVAL	3	4
MOVEMENT	← →	↑ ↓

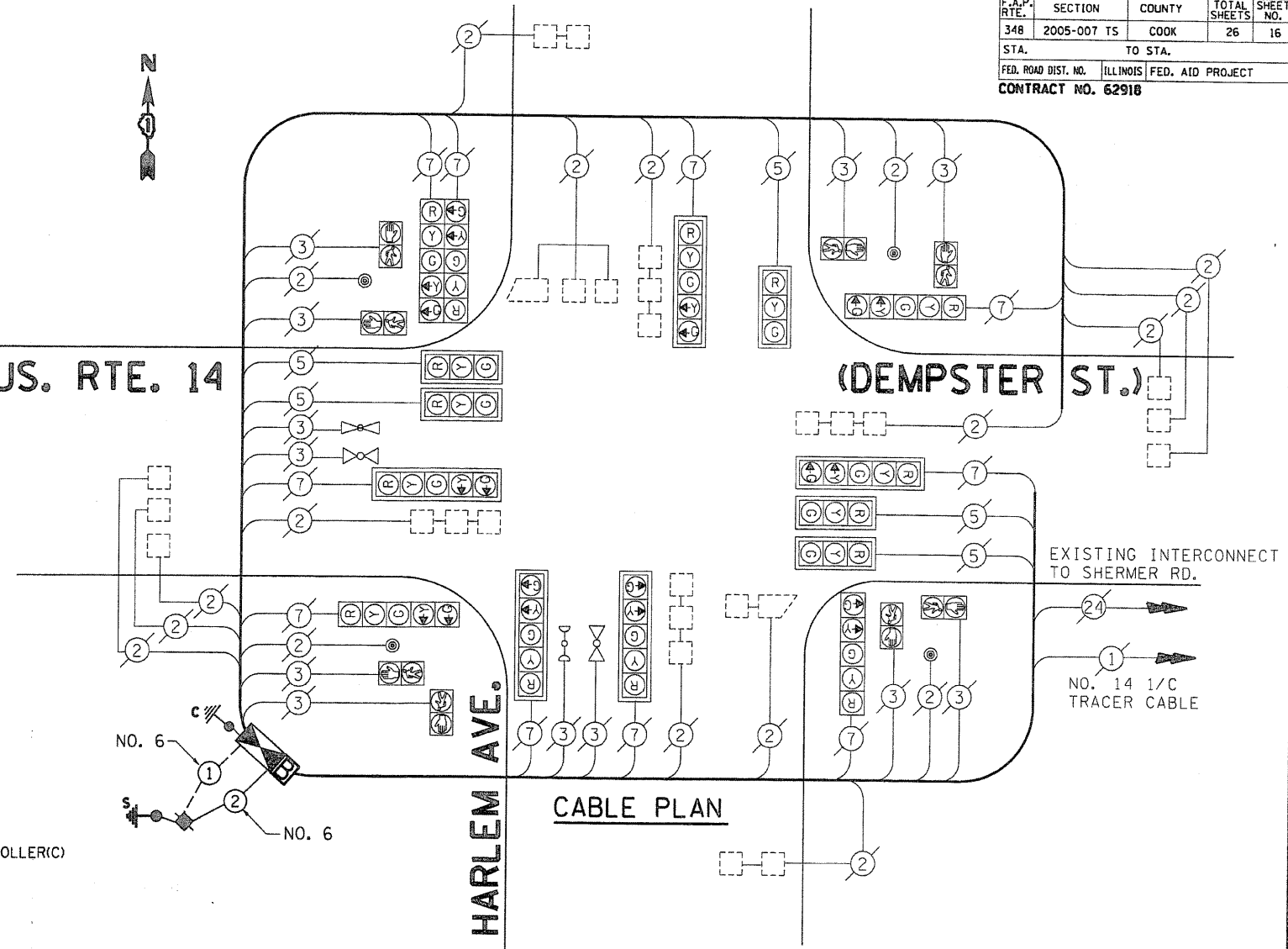
**CABLE PLAN LEGEND**

- |  |  |  |  |
|--|--|--|--|
|  | <b>8" (200mm) TRAFFIC SIGNAL SECTION</b>   |  | <b>SIGNAL FACE WITH BACKPLATE. "P" INDICATES PROGRAMMED HEAD</b>       |
|  | <b>12" (300mm) TRAFFIC SIGNAL SECTION</b>  |  | <b>RAILROAD CONTROL CABINET</b>  |
|  | <b>12" (300mm) PEDESTRIAN SIGNAL SECTION</b>   |  | <b>ILLUMINATED SIGN "NO LEFT TURN"</b>                                 |
|  | <b>12" (300mm) PEDESTRIAN SIGNAL SECTION</b>   |  | <b>ILLUMINATED SIGN "NO RIGHT TURN"</b>                                |
|  | <b>CONTROLLER CABINET</b>  |  | <b>GROUND ROD AT HANDHOLE(H), DOUBLE HANDHOLE(H), OR CONTROLLER(C)</b> |
|  | <b>SERVICE INSTALLATION</b>  |  | <b>GROUND ROD AT POST (P) OR MAST ARM POLE (MA)</b>                    |
|  | <b>TELEPHONE CONNECTION</b>  |  | <b>GROUND ROD AT ELECTRIC SERVICE INSTALLATION</b>                     |
|  | <b>MAGNETIC DETECTOR</b>   |  | <b>GROUND CABLE IN CONDUIT NO. 6 SOLID COPPER (GREEN)</b>              |
|  | <b>EMERGENCY VEHICLE LIGHT DETECTOR</b>  |  | <b>FIBER OPTIC CABLE IN CONDUIT, NO. 62.5/125, MM12F SM12F</b>         |
|  | <b>CONFIRMATION BEACON</b>   |  | <b>UNINTERRUPTIBLE POWER SUPPLY</b>                                    |
|  | <b>PUSHBUTTON DETECTOR</b>   |  |  |
|  | <b>VEHICLE DETECTOR, INDUCTION LOOP</b>  |  |  |
|  | <b>DENOTES NUMBER OF CONDUCTORS. ALL CABLE NO. 14 EXCEPT AS INDICATED. ALL LOOP DETECTOR CABLE TO BE SHIELDED.</b> |  |  |

**US. RTE. 14**

**HARLEM AVE.**

**(DEMPSTER ST.)**



**CABLE PLAN**

**SCHEDULE OF QUANTITIES**

ITEM	UNIT	QUANTITY
TRAFFIC CONTROL AND PROTECTION, STANDARD 701701	LSUM	0.11
TRAFFIC CONTROL AND PROTECTION, STANDARD 701801	LSUM	0.11
MAINTENANCE OF EXISTING TRAFFIC SIGNAL INSTALLATION	EACH	1
FULL-ACTUATED CONTROLLER AND TYPE IV CABINET (SPECIAL)	EACH	1
TRANSCEIVER-FIBER OPTIC	EACH	1
INDUCTIVE LOOP DETECTOR	EACH	14
ELECTRIC CABLE IN CONDUIT, GROUNDING NO. 6 1 C	FOOT	90
ELECTRIC CABLE IN CONDUIT, SERVICE NO. 6 2 C	FOOT	90
REMOVE ELECTRIC CABLE FROM CONDUIT	FOOT	65
REMOVE EXISTING TRAFFIC SIGNAL EQUIPMENT	EACH	1
SERVICE INSTALLATION, POLE MOUNT	EACH	1
UNINTERRUPTIBLE POWER SUPPLY (UPS)	EACH	1

**NOTE:**  
THE TRAFFIC SIGNAL CONTROL EQUIPMENT FOR THIS PROJECT SHALL BE "ECONO LITE" TO MATCH THE EXISTING ADJACENT SYSTEM.

I.D.O.T. TRAFFIC SIGNAL INSTALLATION ELECTRICAL SERVICE REQUIREMENTS					TOTAL WATTAGE
TYPE	NO. LAMPS	WATTAGE (INCANDE.)	LED	COOPERATION	
SIGNAL (RED)	15	135	1	0.50	127.50
(YELLOW)	15	135	25	0.25	93.75
(GREEN)	15	135	15	0.25	56.25
ARROW	18	135	12	0.10	21.60
PED. SIGNAL	8	90	25	1.00	200.00
CONTROLLER	1	100	100	1.00	100.00
ILLUM. SIGN		84		0.05	
FLASHER				0.50	
ENERGY COSTS TO:					TOTAL = 599.10

FOUNDATION	DEPTH	FT. (m)	CABLE SLACK	FT. (m)	VERTICAL	FT. (m)		
TYPE A - POST	4	(1.2)	HANDHOLE	6.5	(2.0)	ALL FOUNDATIONS	3.5	(1.0)
D - CONTROLLER	4	(1.2)	DOUBLE HANDHOLE	13	(4.0)	MAST ARM (L) POLE	20" H-2"	
E - M. ARM POLE			SIGNAL POST	2	(0.6)	(6m H-0.6m)±		
	24"	(600mm)	CONTROLLER CAB.	1	(0.5)	BRACKET MOUNTED	13	(4.0)
	30"	(750mm)	FIBER OPTIC	13	(4.0)	PED. PUSHBUTTON	4	(1.2)
	36"	(900mm)	ELECTRIC SERVICE	1	(0.5)	ELECTRIC SERVICE	13.5	(4.1)
			GROUND CABLE	1	(0.5)	SERVICE TO GROUND	13.5	(4.1)
						POST MOUNTED	6	(1.8)

REVISIONS	
NAME	DATE

ILLINOIS DEPARTMENT OF TRANSPORTATION  
CABLE PLAN, PHASE DESIGNATION DIAGRAM,  
EMERGENCY VEHICLE PREEMPTION SEQUENCE,  
AND SCHEDULE OF QUANTITIES  
U.S. 14 (DEMPSTER ST.)  
AT HARLEM AVE.

SCALE: N.T.S.  
DATE 8/13/2007

DRAWN BY: BCK  
DESIGN BY: BCK  
CHECKED BY: DAD

PLT: NAME: ...  
PLOT SCALE: 41.4897" / IN.  
USER NAME: mohavej