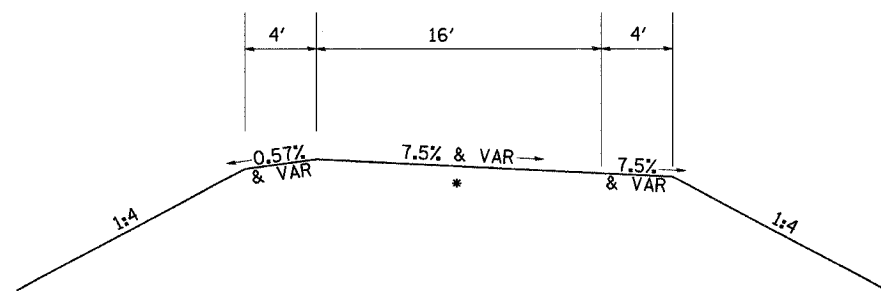


F.A.P. RTE.	SECTION	COUNTY	TOTAL SHEETS	SHEET NO.
595	5HBR	ROCK ISLAND	139	32
STA.		TO STA.		
FED. ROAD DIST. NO.		ILLINOIS FED. AID PROJECT		

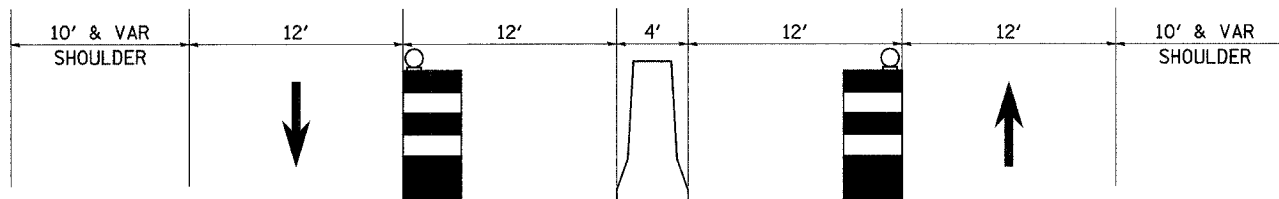
STAGING TYPICALS

STAGE 1 & 4
TEMPORARY RAMP CA

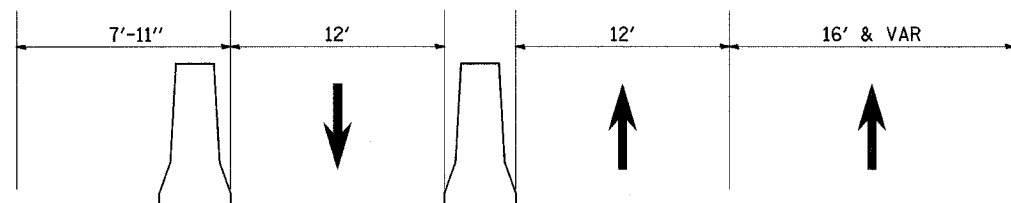


* TEMPORARY PAVEMENT - SEE SPECIAL PROVISIONS

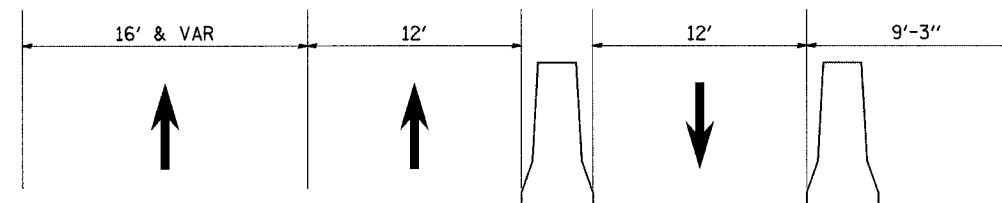
STAGE 2



STAGE 3



STAGE 4



PLOT DATE = Thu Sep 28 14:55:01 2007
 FILE NAME = I:\Projects\595\5HBR\595_5HBR_032.dgn
 PLOT SCALE = 50.0000 / IN.
 USER NAME = costello

