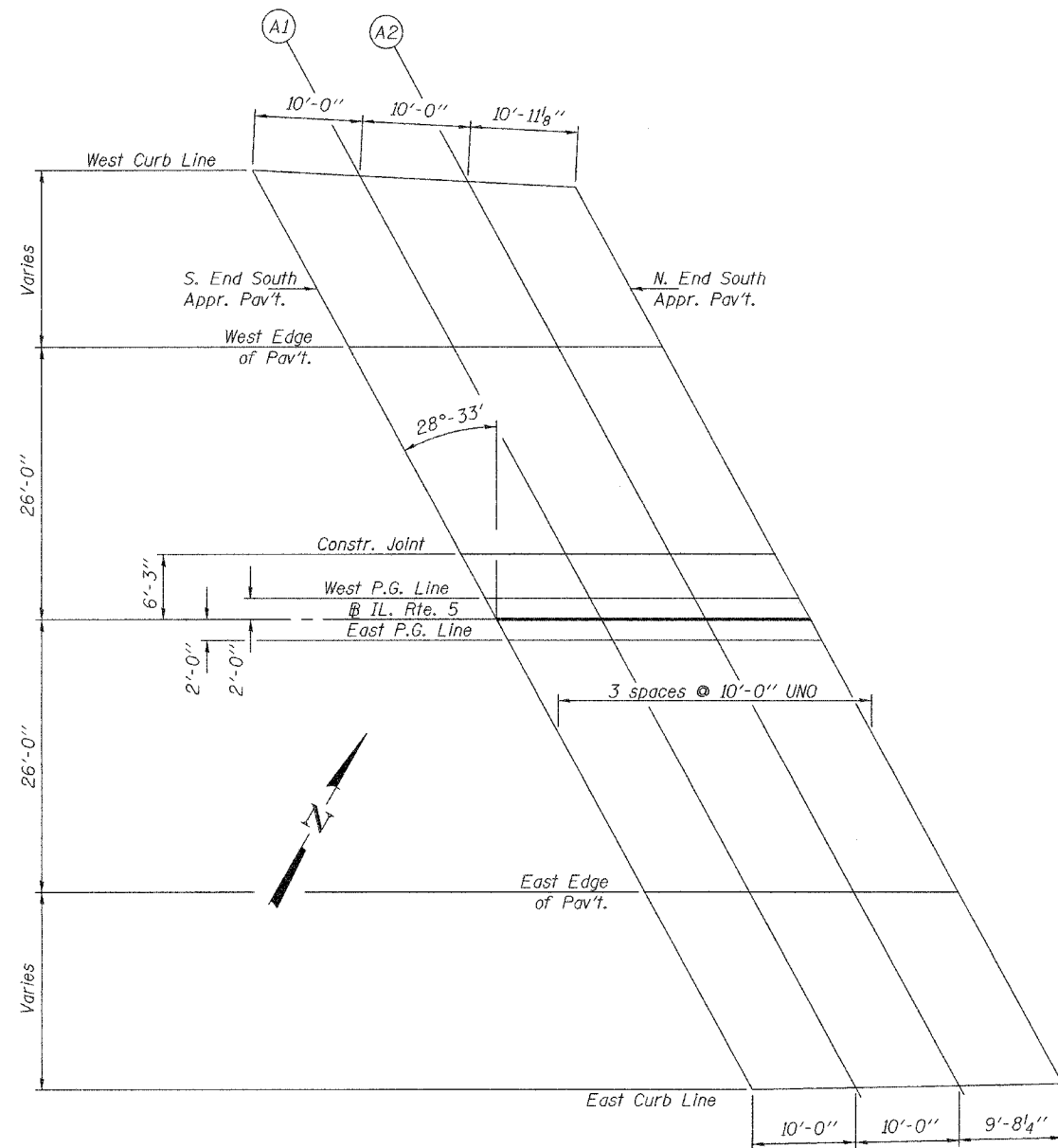


STATE OF ILLINOIS  
DEPARTMENT OF TRANSPORTATION

ROUTE NO.	SECTION	COUNTY	DATE	SHEET NO.	SHEET NO. 10 33 SHEETS
F.A.P. 595	5HBR	Rock Island	139	60	
FED. ROAD DIST. NO. 7		ILLINOIS FED. AID PROJECT			

Contract #64931



PLAN

WEST CURB LINE

Location	Station	Offset	Theoretical Grade Elevations
S. End S. Appr. Pav't.	622+31.01	-51.72	644.54
A1	622+41.00	-51.19	644.27
A2	622+50.98	-50.66	644.00
N. End S. Appr. Pav't.	622+61.90	-50.09	643.71

WEST EDGE OF PAVEMENT

Location	Station	Offset	Theoretical Grade Elevations
S. End S. Appr. Pav't.	622+45.00	-26.00	644.66
A1	622+55.00	-26.00	644.39
A2	622+65.00	-26.00	644.11
N. End S. Appr. Pav't.	622+75.00	-26.00	643.83

STAGE CONSTRUCTION LINE

Location	Station	Offset	Theoretical Grade Elevations
S. End S. Appr. Pav't.	622+55.75	-6.25	644.66
A1	622+65.75	-6.25	644.38
A2	622+75.75	-6.25	644.10
N. End S. Appr. Pav't.	622+85.75	-6.25	643.82

WEST PROFILE GRADE LINE

Location	Station	Offset	Theoretical Grade Elevations
S. End S. Appr. Pav't.	622+58.06	-2.00	644.66
A1	622+68.06	-2.00	644.38
A2	622+78.06	-2.00	644.10
N. End S. Appr. Pav't.	622+88.06	-2.00	643.82

BASELINE IL. RTE. 5

Location	Station	Offset	Theoretical Grade Elevations
S. End S. Appr. Pav't.	622+59.15	0.00	644.66
A1	622+69.15	0.00	644.38
A2	622+79.15	0.00	644.10
N. End S. Appr. Pav't.	622+89.15	0.00	643.82

EAST PROFILE GRADE LINE

Location	Station	Offset	Theoretical Grade Elevations
S. End S. Appr. Pav't.	622+60.24	2.00	644.60
A1	622+70.24	2.00	644.32
A2	622+80.24	2.00	644.04
N. End S. Appr. Pav't.	622+90.24	2.00	643.76

EAST EDGE OF PAVEMENT

Location	Station	Offset	Theoretical Grade Elevations
S. End S. Appr. Pav't.	622+73.29	26.00	643.88
A1	622+83.29	26.00	643.60
A2	622+93.29	26.00	643.32
N. End S. Appr. Pav't.	623+03.29	26.00	643.04

EAST CURB LINE

Location	Station	Offset	Theoretical Grade Elevations
S. End S. Appr. Pav't.	622+85.75	48.88	643.07
A1	622+95.75	48.68	642.79
A2	623+05.75	48.48	642.52
N. End S. Appr. Pav't.	623+15.43	48.29	642.25

DESIGNED	Dewey H. Coultas
CHECKED	Chad E. Hodel
DRAWN	W.D. Collins
CHECKED	D.H.C./C.E.H.

EXAMINED	Thomas J. Damagalki ENGINEER OF BRIDGE DESIGN
PASSED	Ralph E. Anderson ENGINEER OF BRIDGES AND STRUCTURES

October 5, 2007

TOP OF SOUTH APPROACH  
SLAB ELEVATIONS  
IL. RTE. 5 OVER IL. RTE. 84  
F.A.P. RTE. 595 - SECTION 5HBR  
ROCK ISLAND COUNTY  
STATION 623+65.69  
S.N. 081-0169