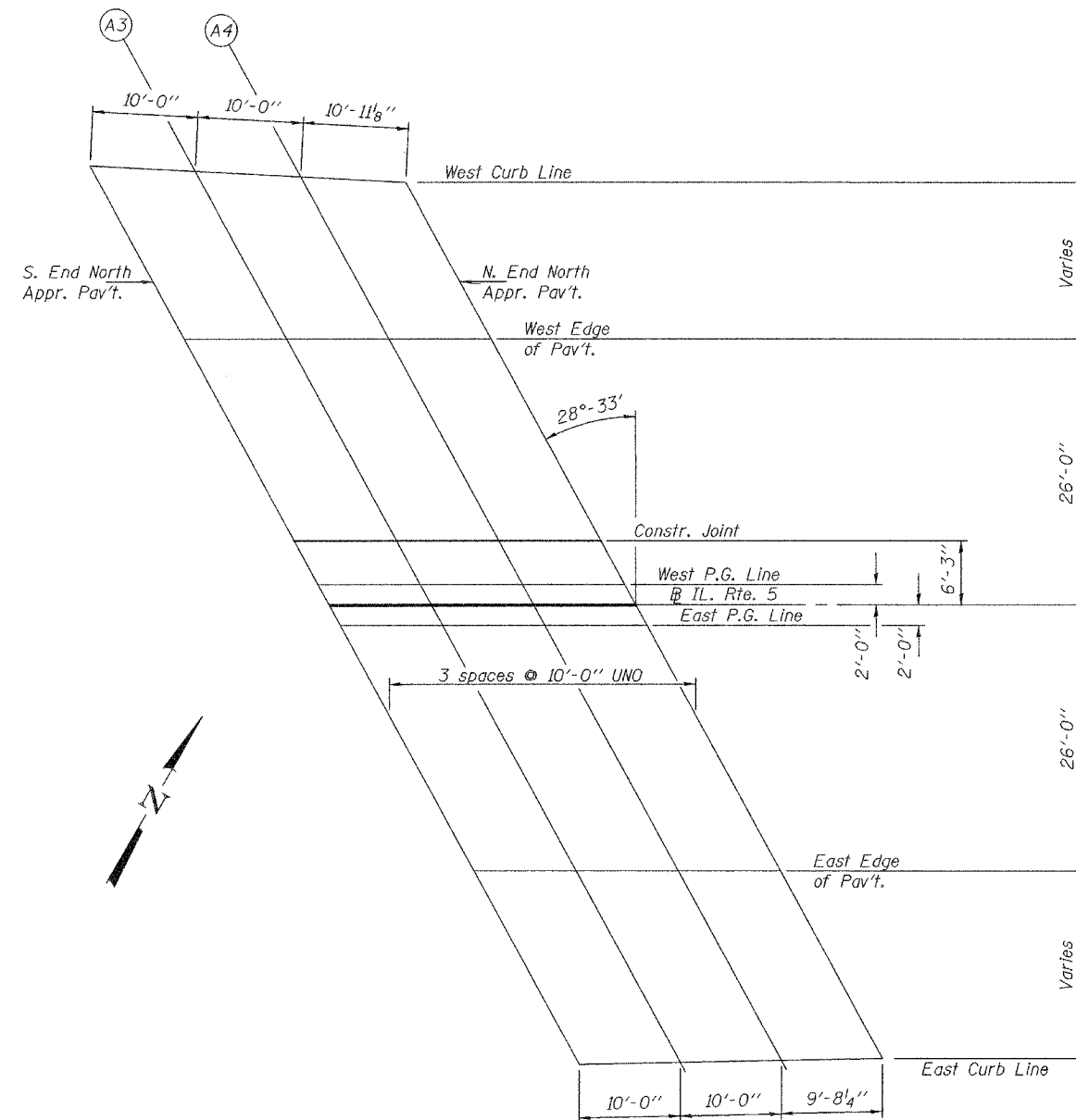


STATE OF ILLINOIS
DEPARTMENT OF TRANSPORTATION



PLAN

DESIGNED	Dewey H. Coultas
CHECKED	Chad E. Hodel
DRAWN	W.D. Collins
CHECKED	D.H.C./C.E.H.

October 5, 2007

EXAMINED *Thomas J. Damgalabi*
ENGINEER OF BRIDGES

PASSED *Ralph E. Anderson*
ENGINEER OF BRIDGES AND STRUCTURES

WEST CURB LINE

Location	Station	Offset	Theoretical Grade Elevations
S. End N. Appr. Pav't.	624+05.57	-42.51	639.85
A3	624+15.55	-41.98	639.59
A4	624+25.54	-41.45	639.32
N. End N. Appr. Pav't.	624+36.45	-40.88	639.03

WEST EDGE OF PAVEMENT

Location	Station	Offset	Theoretical Grade Elevations
S. End N. Appr. Pav't.	624+14.55	-26.00	639.93
A3	624+24.55	-26.00	639.66
A4	624+34.55	-26.00	639.38
N. End N. Appr. Pav't.	624+44.55	-26.00	639.10

STAGE CONSTRUCTION LINE

Location	Station	Offset	Theoretical Grade Elevations
S. End N. Appr. Pav't.	624+25.30	-6.25	639.93
A3	624+35.30	-6.25	639.65
A4	624+45.30	-6.25	639.37
N. End N. Appr. Pav't.	624+55.30	-6.25	639.09

WEST PROFILE GRADE LINE

Location	Station	Offset	Theoretical Grade Elevations
S. End N. Appr. Pav't.	624+27.61	-2.00	639.93
A3	624+37.61	-2.00	639.65
A4	624+47.61	-2.00	639.37
N. End N. Appr. Pav't.	624+57.61	-2.00	639.09

BASELINE IL. RTE. 5

Location	Station	Offset	Theoretical Grade Elevations
S. End N. Appr. Pav't.	624+28.70	0.00	639.93
A3	624+38.70	0.00	639.65
A4	624+48.70	0.00	639.37
N. End N. Appr. Pav't.	624+58.70	0.00	639.09

EAST PROFILE GRADE LINE

Location	Station	Offset	Theoretical Grade Elevations
S. End N. Appr. Pav't.	624+29.78	2.00	639.87
A3	624+39.78	2.00	639.59
A4	624+49.78	2.00	639.31
N. End N. Appr. Pav't.	624+59.78	2.00	639.03

EAST EDGE OF PAVEMENT

Location	Station	Offset	Theoretical Grade Elevations
S. End N. Appr. Pav't.	624+42.84	26.00	639.14
A3	624+52.84	26.00	638.87
A4	624+62.84	26.00	638.59
N. End N. Appr. Pav't.	624+72.84	26.00	638.31

EAST CURB LINE

Location	Station	Offset	Theoretical Grade Elevations
S. End N. Appr. Pav't.	624+53.47	45.54	638.46
A3	624+63.47	45.34	638.18
A4	624+73.47	45.14	637.91
N. End N. Appr. Pav't.	624+83.15	44.94	637.64

TOP OF NORTH APPROACH
SLAB ELEVATIONS
IL. RTE. 5 OVER IL. RTE. 84
F.A.P. RTE. 595 - SECTION 5HBR
ROCK ISLAND COUNTY
STATION 623+65.69
S.N. 081-0169