

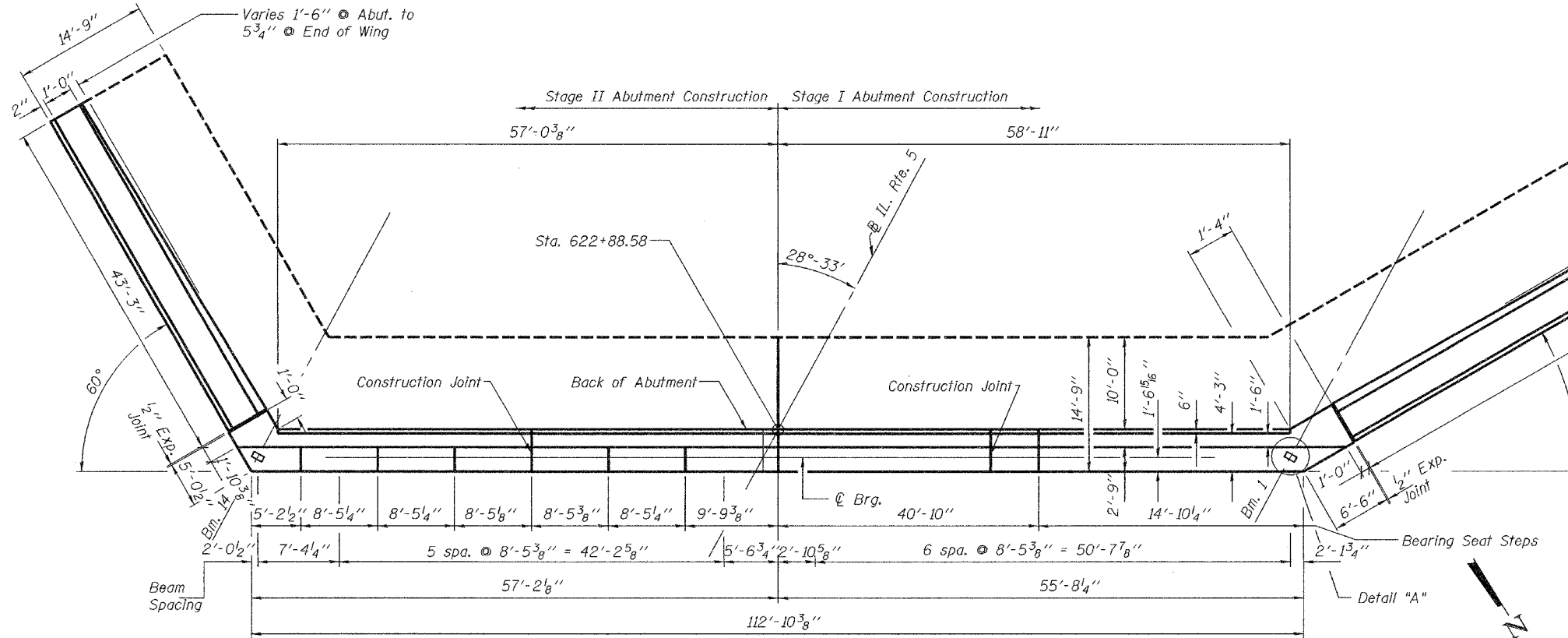
STATE OF ILLINOIS
DEPARTMENT OF TRANSPORTATION

ROUTE NO.	SECTION	COUNTY	TOTAL SHEETS	SHEET NO.	SHEET NO. 23
F.A.P. 595	5HBR	Rock Island	140	73	33 SHEETS
FED. ROAD DIST. NO. 7	ILLINOIS	FED. AID PROJECT			

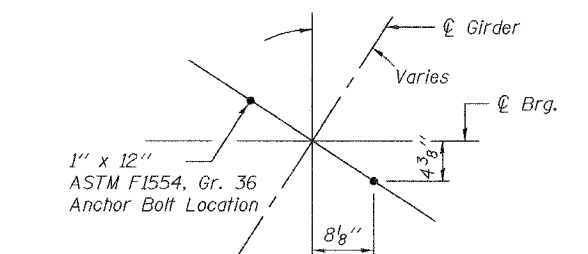
Notes:
Space reinforcement in cap to miss anchor bolts.
Pour steps monolithically with cap.
All exposed edges shall have 3/4" chamfer.

Contract #64931

Varies 1'-6" @ Abut. to 6 1/8" @ End of Wing

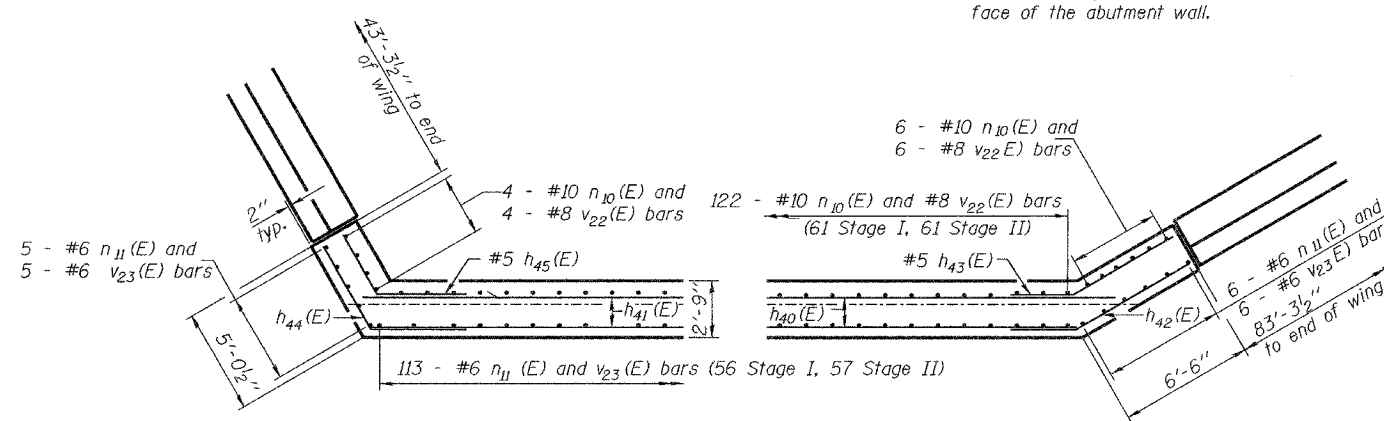


PLAN



DETAIL A

Note:
Concrete Sealer shall be applied to the inside vertical face of the back wall, the horizontal area of the bearing seats, and the exposed vertical face of the abutment wall.



SECTION A-A

SECTION B-B

See Sheet 24 of 33 for Section locations.

BEARING SEAT ELEVATIONS

Location	S. Abut.
Bm. 1	639.78
Bm. 2	639.78
Bm. 3	639.85
Bm. 4	639.85
Bm. 5	639.85
Bm. 6	639.85
Bm. 7	639.85
Bm. 8	639.78
Bm. 9	639.56
Bm. 10	639.33
Bm. 11	639.11
Bm. 12	638.85
Bm. 13	638.59
Bm. 14	638.36

DESIGNED	Dewey H. Coultas
CHECKED	Chad E. Hodel
DRAWN	W.D. Collins
CHECKED	D.H.C./C.E.H.

EXAMINED	October 5, 2007
PASSED	Thomas J. Damagala ENGINEER OF BRIDGE DESIGN
	Ralph E. Anderson ENGINEER OF BRIDGES AND STRUCTURES

SOUTH ABUTMENT
IL. RTE. 5 OVER IL. RTE. 84
F.A.P. RTE. 595 - SECTION 5HBR
ROCK ISLAND COUNTY
STATION 623+65.69
S.N. 081-0169