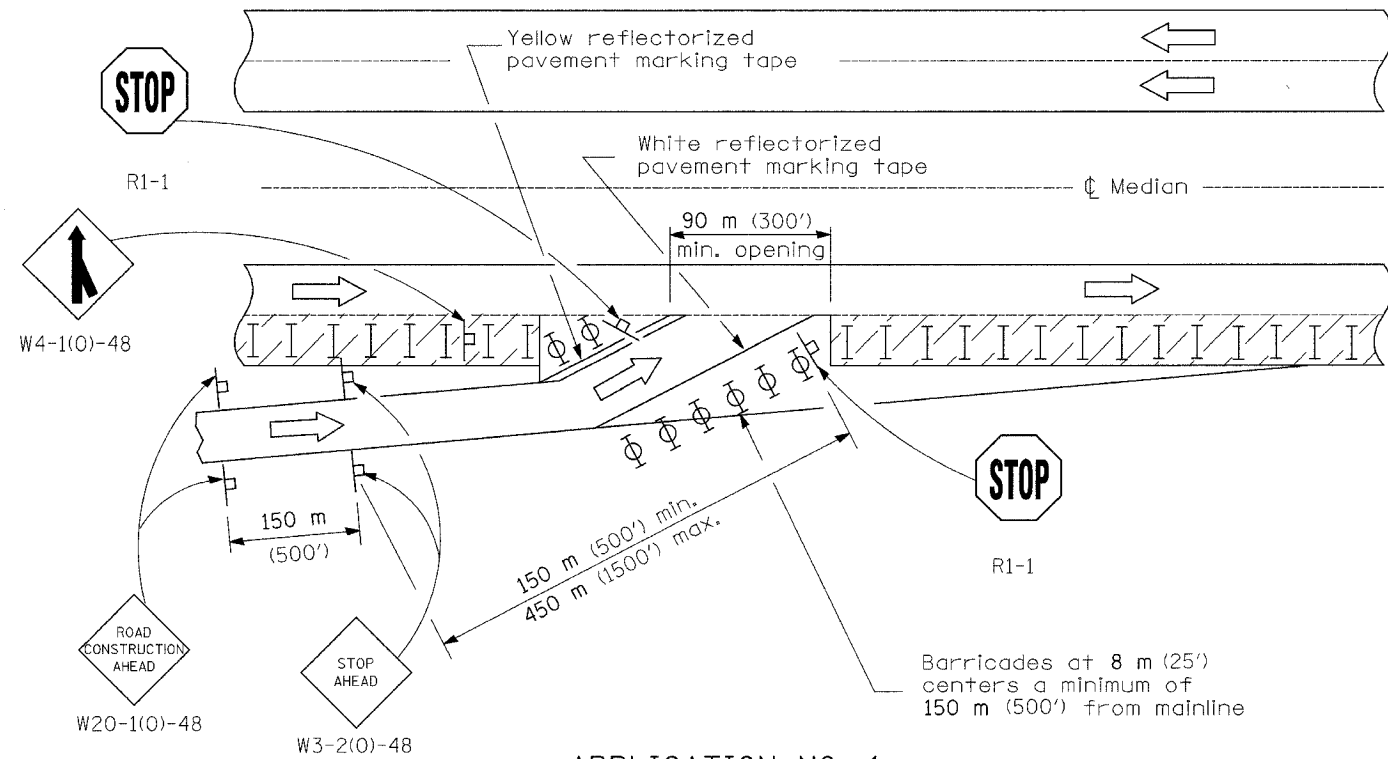


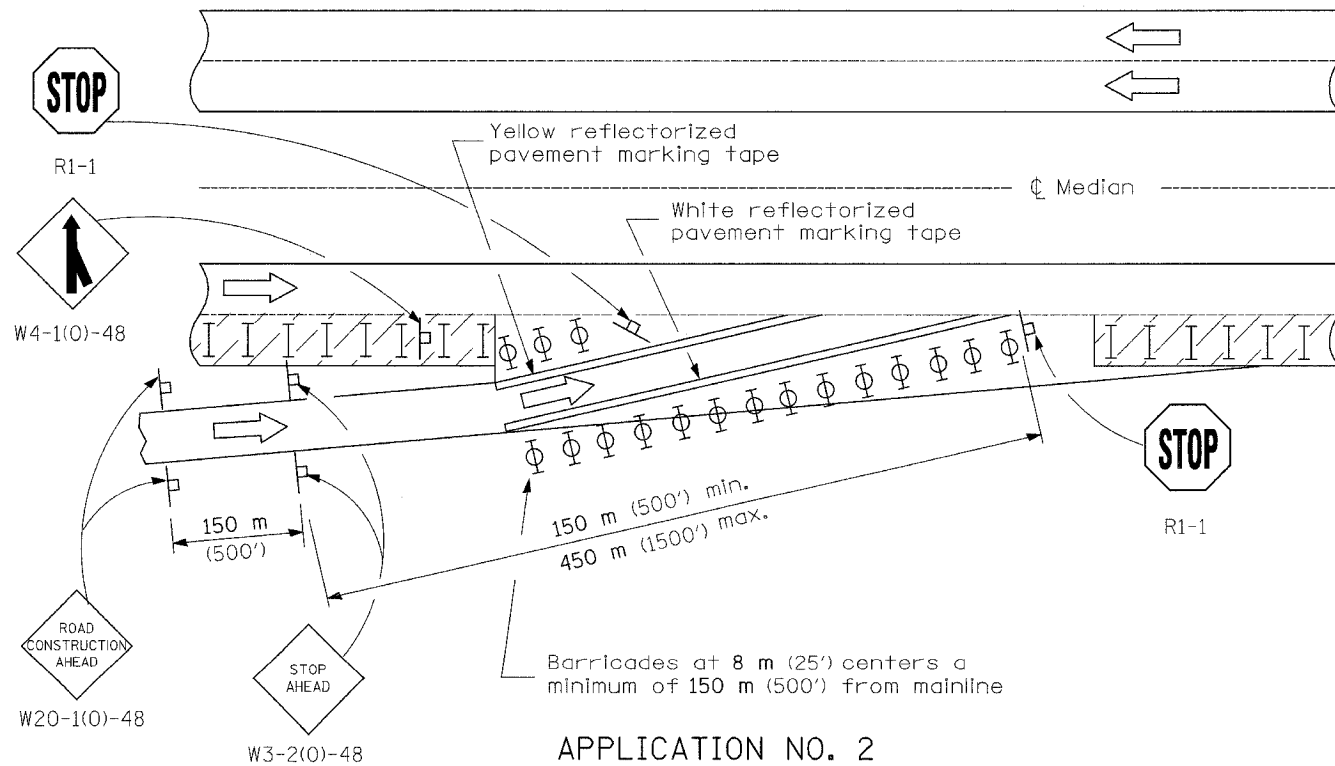
TRAFFIC CONTROL DETAIL

CONTRACT NO. 64931			
F.A.P. RTE.	SECTION	COUNTY	TOTAL SHEETS
595	5HBR	ROCK ISLAND	139
STA.	TO STA.		
FED. ROAD DIST. NO.	ILLINOIS	FED. AID PROJECT	



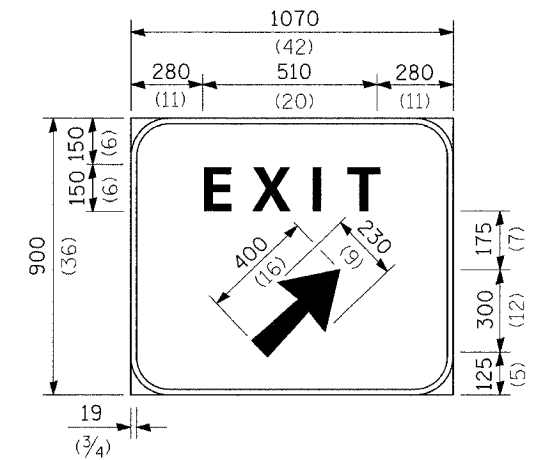
APPLICATION NO. 1

Application No. 1 depicts a modified entrance ramp. This method shall be utilized whenever existing entrance tapers cannot be retained due to the close proximity of the work zone. The entrance location may be shifted, with the approval of the Engineer, to perform work in the entrance area. Application No. 2 shall be put into effect as soon as possible.



APPLICATION NO. 2

Application No. 2 depicts a shortening of the normal entrance ramp. This method shall be used whenever the existing geometrics can be retained. Consideration should be given to the entering motorists' line of sight, through, between, or over the delineation devices.



Background - Green
Border and legend - White
"D" size letters

EXIT SIGN - SPECIAL

DETAIL A

(To be utilized where distance between the two rows of channelizing devices is 1.8 m (6') in width.)

SYMBOLS

- Work area
- Sign
- Type II barricades or drums with steady burning monodirectional light
- Type II barricades or drums
- Drums with steady burning monodirectional light

GENERAL NOTES

This Standard is used where, at any time any vehicle, equipment, workers or their activities require a lane closure in close proximity of an exit or entrance ramp and supplements other traffic control Standards for lane closures.

These applications also apply when work is being performed in the left lanes and the ramps enter and exit on the left. Under these conditions, the Exit sign arrow and the Side road symbol sign shall be changed.

Cones may be utilized during daylight operations, at one half the spacing or drums/barricades.

All dimensions are in millimeters (inches) unless otherwise shown.

**LANE CLOSURE, MULTILANE,
AT ENTRANCE OR EXIT RAMP,
FOR SPEEDS ≥ 45 MPH**

(Sheet 1 of 2)