

F.A.P. RTE.	SECTION	COUNTY	TOTAL SHEETS	SHEET NO.
693	19 BR-1	FORD	50	1

CONTRACT NO. 66697

P-93-051-04  
D-93-017-07

50  
+  
51

**INDEX OF SHEETS**

1. COVER SHEET
2. GENERAL NOTES
3. SUMMARY OF QUANTITIES
4. TYPICAL SECTIONS
5. SCHEDULE OF QUANTITIES
6. ALIGNMENT, TIES & BENCHMARKS
7. TRAFFIC CONTROL CONSTRUCTION STAGING NOTES AND DETAILS STAGE I
8. TRAFFIC CONTROL CONSTRUCTION STAGING I
9. TRAFFIC CONTROL CONSTRUCTION STAGING NOTES AND DETAILS STAGE II
10. TRAFFIC CONTROL CONSTRUCTION STAGING II
11. PLAN AND PROFILE
12. EROSION CONTROL, LANDSCAPING & PAVEMENT MARKING PLAN
13. RIGHT-OF-WAY PLAN
- 14-33. BRIDGE PLANS
- 34-40. EXISTING BRIDGE PLANS
- 41-42A. DETAILS
- 43-50. CROSS SECTIONS

**HIGHWAY STANDARDS**

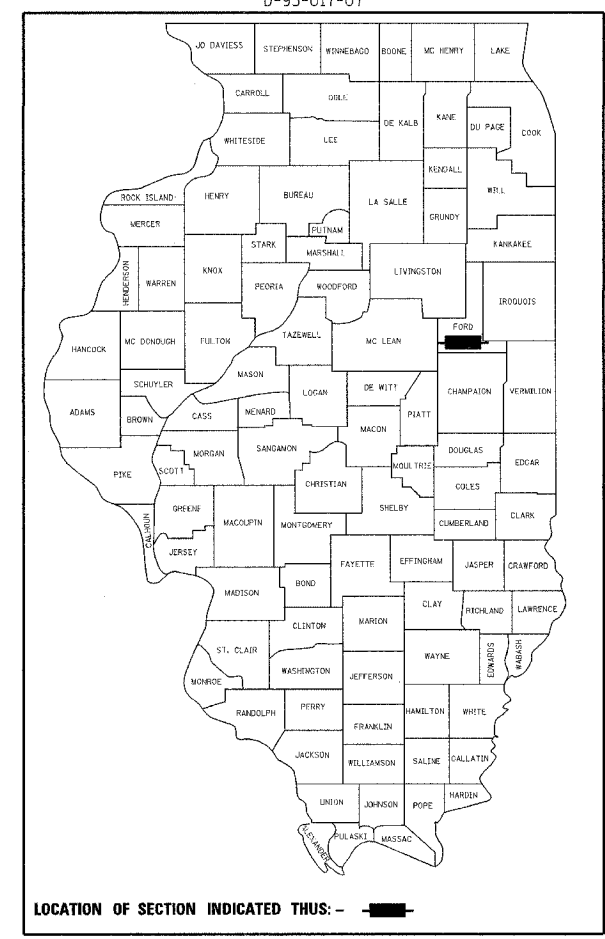
- |           |   |
|-----------|---|
| 000001-04 | STANDARD SYMBOLS, ABBREVIATIONS AND PATTERNS                  |
| 280001-03 | TEMPORARY EROSION CONTROL SYSTEMS                             |
| 420401-05 | BRIDGE APPROACH PAVEMENT                                      |
| 515001-02 | NAME PLATE FOR BRIDGES  |
| 542401    | METAL END SECTION FOR PIPE CULVERTS                           |
| 601101    | CONCRETE HEADWALL FOR PIPE DRAIN                              |
| 606001-03 | CONCRETE CURB TYPE B AND COMBINATION CONCRETE CURB AND GUTTER |
| 609006-03 | BRIDGE APPROACH PAVEMENT (DRAIN DETAIL)                       |
| 630001-07 | STEEL PLATE BEAM GUARDRAIL                                    |
| 630201-04 | PCC/HMA STABILIZATION AT STEEL PLATE BEAM GUARDRAIL           |
| 630301-04 | SHOULDER WIDENING FOR TYPE 1 (SPECIAL) GUARDRAIL TERMINALS    |
| 631031-06 | TRAFFIC BARRIER TERMINAL, TYPE 6                              |
| 635006-02 | REFLECTOR AND TERMINAL MARKER PLACEMENT                       |
| 635011-01 | REFLECTOR MARKER AND MOUNTING DETAILS                         |
| 667101    | PERMANENT SURVEY MARKERS                                      |
| 701301-02 | LANE CLOSURE, 2L, 2W, SHORT TIME OPERATIONS                   |
| 701321-08 | LANE CLOSURE, 2L, 2W, BRIDGE REPAIR WITH BARRIER              |
| 701326-02 | LANE CLOSURE, 2L, 2W, PAVEMENT WIDENING, FOR SPEEDS > 45 MPH  |
| 702001-06 | TRAFFIC CONTROL DEVICES                                       |
| 704001-03 | TEMPORARY CONCRETE BARRIER                                    |
| 720001    | SIGN PANEL MOUNTING DETAILS                                   |
| 720006-01 | SIGN PANEL ERECTION DETAILS                                   |
| 780001-01 | TYPICAL PAVEMENT MARKINGS                                     |
| 781001-02 | TYPICAL APPLICATIONS RAISED REFLECTIVE PAVEMENT MARKERS       |

STATE OF ILLINOIS  
DEPARTMENT OF TRANSPORTATION  
DIVISION OF HIGHWAYS  
**PLANS FOR PROPOSED  
HIGHWAY IMPROVEMENT**

FAP ROUTE 693 (ILLINOIS ROUTE 9)

SECTION 19 BR-1  
PROJECT ACBRF-0693 (061)  
FORD COUNTY

SECTION 19 BR-1  
S.N. 027-0006 (EXISTING)  
S.N. 027-0096 (PROPOSED)  
BRIDGE REPLACEMENT  
C-93-024-07  
BRIDGE REPLACEMENT AT  
DRUMMER CREEK  
R 7 E  
BEGIN IMPROVEMENT  
STA. 808 + 50  
END IMPROVEMENT  
STA. 813 + 00



LOCATION OF SECTION INDICATED THUS: - [black rectangle] -

**FUNCTIONAL CLASSIFICATION - RURAL MINOR ARTERIAL**  
DESIGN SPEED = 30 MPH  
POSTED SPEED = 30 MPH  
2009 ADT = 2,450  
P.V. = 84.1%    S.U. = 11.4%    M.U. = 4.5%

STATE OF ILLINOIS  
DEPARTMENT OF TRANSPORTATION  
DIVISION OF HIGHWAYS

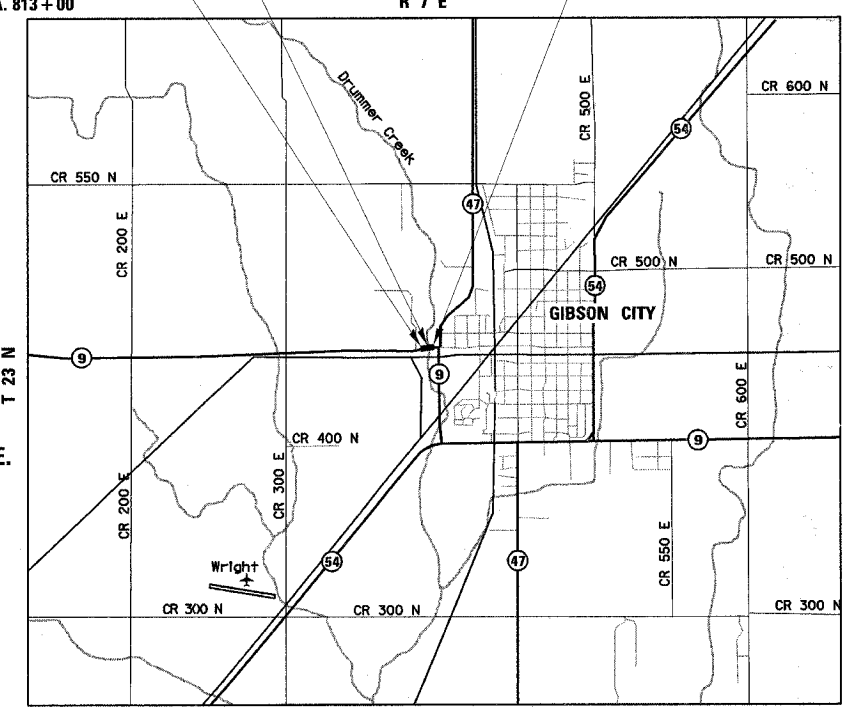
SUBMITTED 8/16 2007

*Eric E. Haral*  
DEPUTY DIRECTOR OF HIGHWAYS, REGION ENGINEER

October 12, 2007  
*Eric E. Haral*  
INTERIM ENGINEER OF DESIGN AND ENVIRONMENT

October 12, 2007  
*Milton R. Seco, P.E.*  
DIRECTOR OF HIGHWAYS, CHIEF ENGINEER

**PRINTED BY THE AUTHORITY  
OF THE STATE OF ILLINOIS**

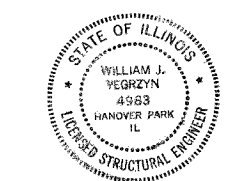


NE 1/4, SECTION 10, TWP. 23N. RANGE 7E, 3RD PM  
GROSS LENGTH = 450 FT. = 0.085 MI.  
NET LENGTH = 450 FT. = 0.085 MI.

**rjngroup** License # 184-000813  
200 West Front Street  
Wheaton, IL 60187  
Excellence through Ownership



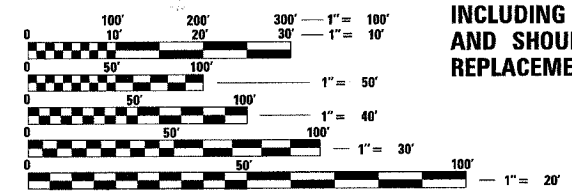
*David W. Blanton*  
8-7-07  
REGISTERED P.E., STATE OF ILLINOIS    11-30-07 EXPIRES



*William J. Yegrezn*  
8-7-07  
REGISTERED P.E., STATE OF ILLINOIS    11-30-08 EXPIRES

**STRUCTURE NUMBER 027-0096 (STA 810+73.11)**  
REMOVE AND REPLACE THE EXISTING BRIDGE DECK, VAULTED ABUTMENT SLABS, APPROACH SLABS AND ALL JOINTS UTILIZING STAGED CONSTRUCTION. REMOVE AND REPLACE THE EXPANSION BEARINGS AT THE VAULTED ABUTMENTS. REPAIR SUBSTRUCTURE AND SLOPE WALLS. PERFORM ALL NECESSARY ROADWAY WORK TO COMPLETE THE BRIDGE REPAIRS, INCLUDING GUARDRAIL REMOVAL AND REPLACEMENT AND SHOULDER WIDENING AND CURB AND GUTTER REPLACEMENT AT ALL FOUR QUADRANTS OF THE BRIDGE.

MICROFILMED \_\_\_\_\_  
REEL NUMBER \_\_\_\_\_  
AWARDED \_\_\_\_\_  
RESIDENT ENGINEER \_\_\_\_\_  
AS BUILT CHANGES WERE MADE  
ON THE FOLLOWING SHEETS \_\_\_\_\_



FULL SIZE PLANS HAVE BEEN PREPARED USING STANDARD ENGINEERING SCALES. REDUCED SIZED PLANS WILL NOT CONFORM TO STANDARD SCALES. IN MAKING MEASUREMENTS ON REDUCED PLANS, THE ABOVE SCALES MAY BE USED.

J.U.L.I.E.  
JOINT UTILITY LOCATION INFORMATION FOR EXCAVATION  
1-800-892-0123

DISTRICT 3 NO. (815) 434-6131  
PROJECT ENGINEER: JOE KANNEL  
UNIT CHIEF: MICHELE LINDEMANN  
TOWNSHIP: DRUMMER

**CONTRACT NO. 66697**

8/16/2007 9:50:53 AM K:\I200206\Cadd\Design\I200206\_Cover.dgn