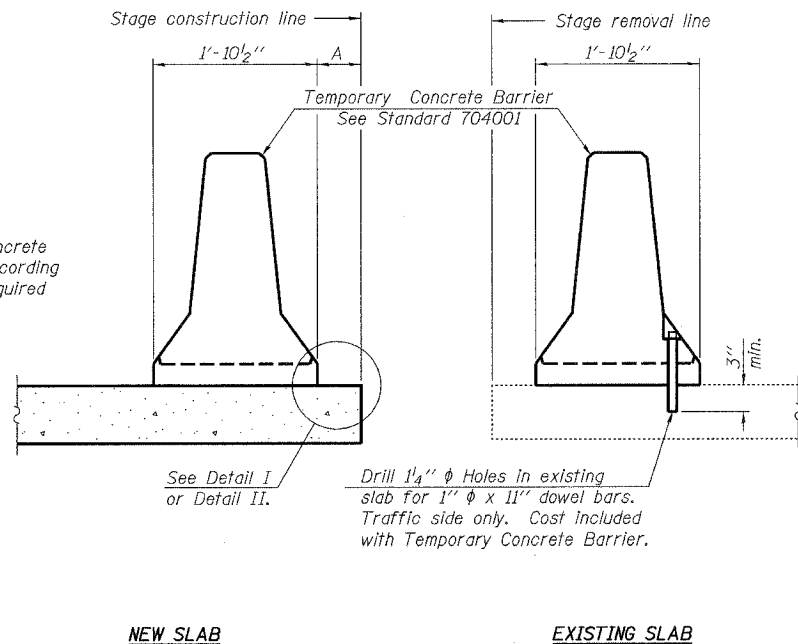


ROUTE NO.	SECTION	COUNTY	FORM SHEETS	SHEET NO.	SHEET NO. 17 20 SHEETS
FAP 693	19BR-1	FORD	50	30	
FED. ROAD DIST. NO. 7	ILLINOIS	FED. AID PROJECT-			

Contract #66697

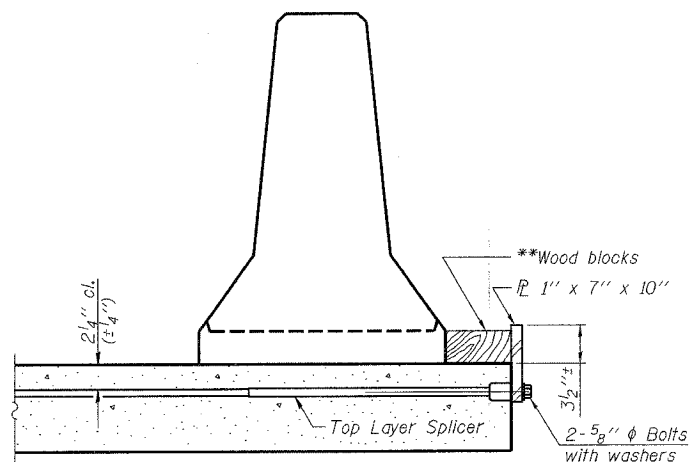


When "A" is 3'-6" or less, the temporary concrete barrier shall be anchored to the new slab according to Detail I or Detail II. No anchorage is required when "A" is greater than 3'-6".

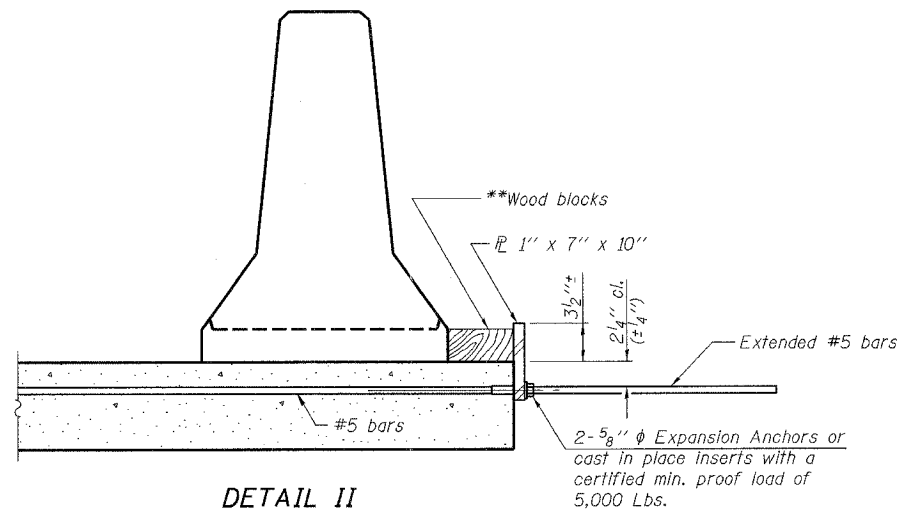
NEW SLAB

EXISTING SLAB

SECTIONS THRU SLAB



DETAIL I

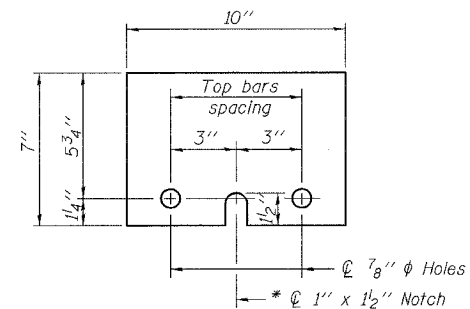


DETAIL II

** Wood blocks may be omitted when required to provide minimum stage traffic lane width. When the wood blocks are omitted, the concrete barrier shall be in direct contact with the steel retainer plate.

NOTES

- Detail I - With Bar Splicer or Couplers:
Connect one (1) 1"x7"x10" steel \bar{L} to the top layer of couplers with 2-5/8" ϕ bolts screwed to coupler at approximate \bar{C} of each barrier panel.
 - Detail II - With Extended Reinforcement Bars:
Connect one (1) 1"x7"x10" steel \bar{L} to the concrete slab with 2-5/8" ϕ Expansion Anchors or cast in place inserts spaced between the top layer of reinforcement at approximate \bar{C} of each barrier panel.
- Cost of anchorage is included with Temporary Concrete Barrier. The 1" x 7" x 10" plate shall not be removed until stage II construction forms and all reinforcement bars are in place and the concrete is ready to be placed.



STEEL RETAINER \bar{L} 1" x 7" x 10"

* Required only with Detail II

rjngroup

Excellence through Ownership

200 West Front Street
Wheaton, IL 60187

ILLINOIS DEPARTMENT OF TRANSPORTATION
TEMPORARY CONCRETE BARRIER
FOR STAGE CONSTRUCTION
IL RTE 9 OVER DRUMMER CREEK
FAP RTE 693 - SECTION 19BR-1
FORD COUNTY
STATION 810+73.11
STRUCTURE NO. 027-0096

DATE: 8/7/2007

DRAWN BY WJV
CHECKED BY BLB