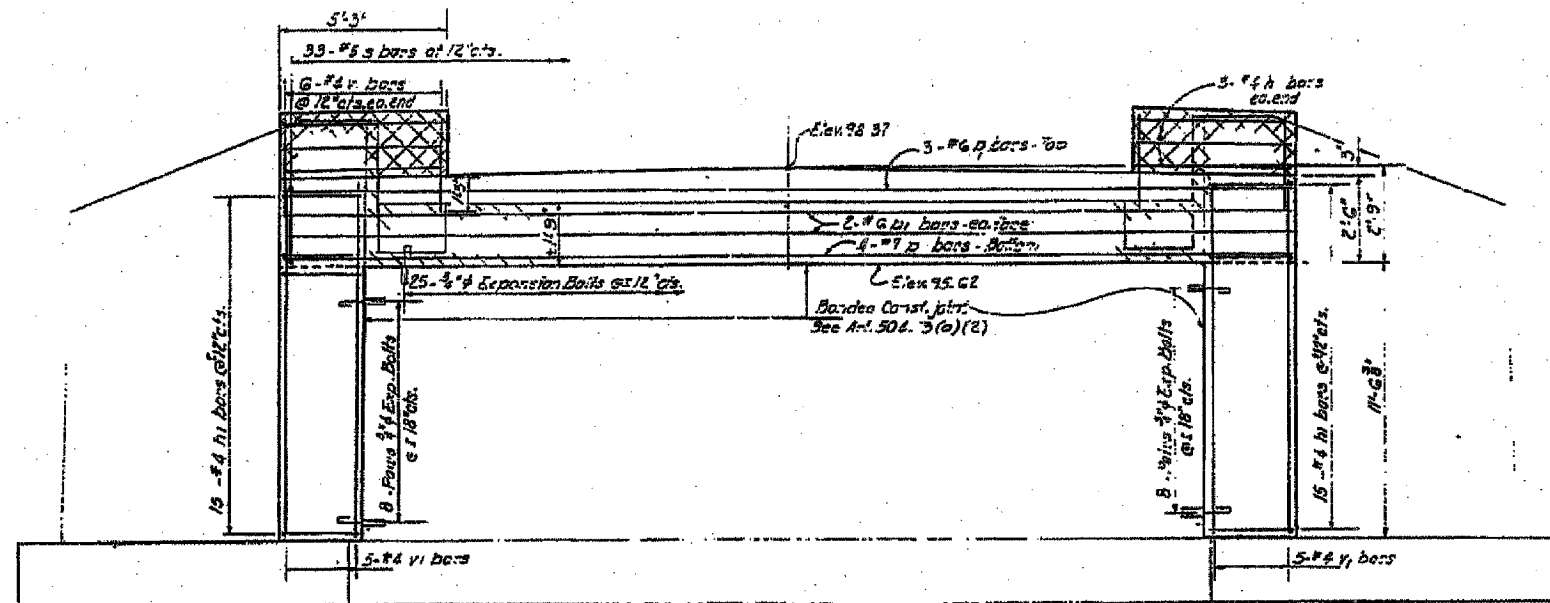
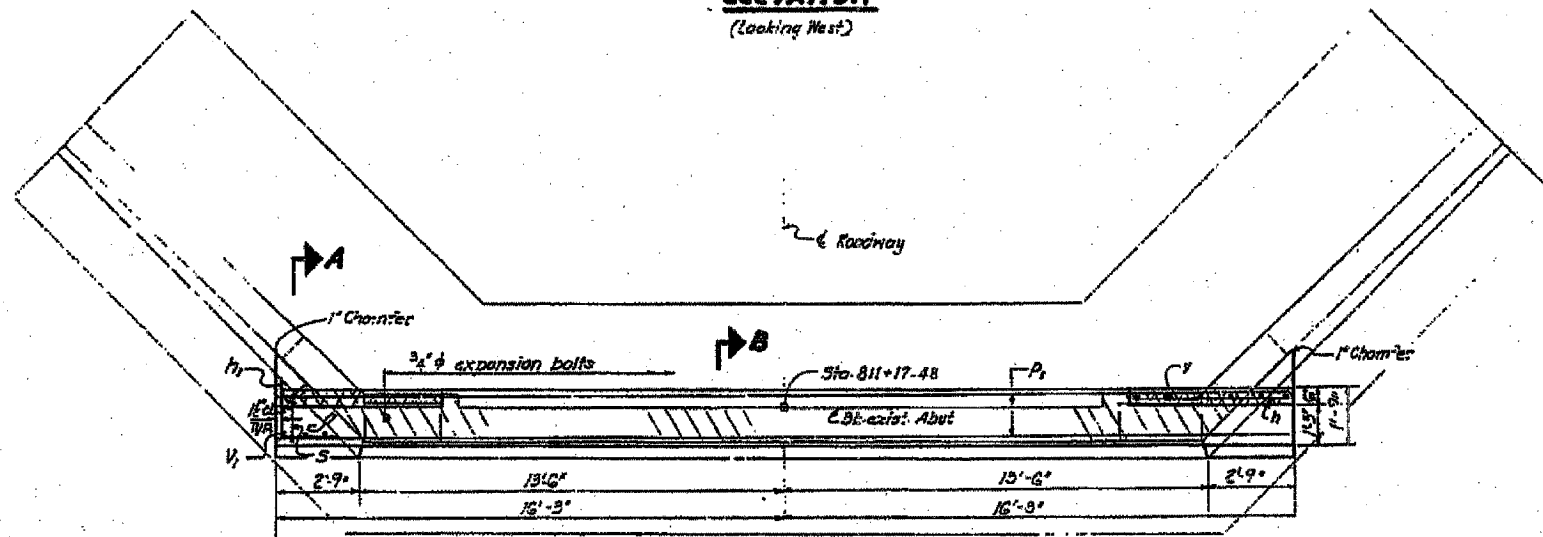


STATE OF ILLINOIS  
DEPARTMENT OF TRANSPORTATION

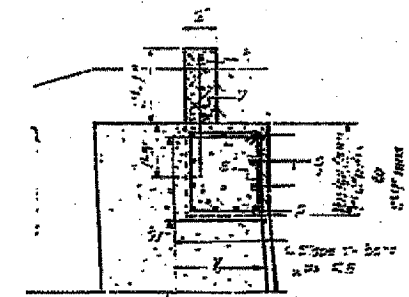
PROJECT NO.	19025	SHEET NO.	25
DATE	BRAND	FORD	42
SHEET NO.		SHEETS	



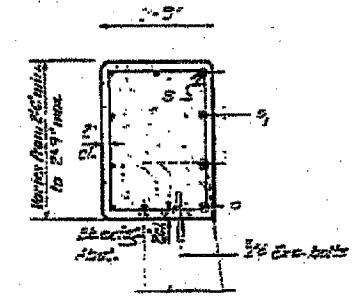
**ELEVATION**  
(Looking West)



**PLAN**



**SEC. A-A**

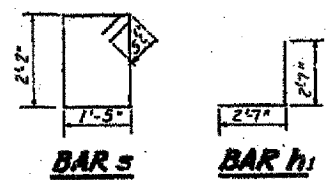


**SEC. B-B**

**BILL OF MATERIAL**

Bar No.	Size	Length	Shape
1	#4	5'-6"	
2	#4	2'-9"	
3	#3	2'-9"	
4	#4	3'-5"	
5	#4	13'-9"	
6	#4	13'-9"	
7	#4	13'-9"	
8	#4	13'-9"	
9	#4	13'-9"	
10	#4	13'-9"	
11	#4	13'-9"	
12	#4	13'-9"	
13	#4	13'-9"	
14	#4	13'-9"	
15	#4	13'-9"	
16	#4	13'-9"	
17	#4	13'-9"	
18	#4	13'-9"	
19	#4	13'-9"	
20	#4	13'-9"	
21	#4	13'-9"	
22	#4	13'-9"	
23	#4	13'-9"	
24	#4	13'-9"	
25	#4	13'-9"	
26	#4	13'-9"	
27	#4	13'-9"	
28	#4	13'-9"	
29	#4	13'-9"	
30	#4	13'-9"	
31	#4	13'-9"	
32	#4	13'-9"	
33	#4	13'-9"	
34	#4	13'-9"	
35	#4	13'-9"	
36	#4	13'-9"	
37	#4	13'-9"	
38	#4	13'-9"	
39	#4	13'-9"	
40	#4	13'-9"	
41	#4	13'-9"	
42	#4	13'-9"	
43	#4	13'-9"	
44	#4	13'-9"	
45	#4	13'-9"	
46	#4	13'-9"	
47	#4	13'-9"	
48	#4	13'-9"	
49	#4	13'-9"	
50	#4	13'-9"	
51	#4	13'-9"	
52	#4	13'-9"	
53	#4	13'-9"	
54	#4	13'-9"	
55	#4	13'-9"	
56	#4	13'-9"	
57	#4	13'-9"	
58	#4	13'-9"	
59	#4	13'-9"	
60	#4	13'-9"	
61	#4	13'-9"	
62	#4	13'-9"	
63	#4	13'-9"	
64	#4	13'-9"	
65	#4	13'-9"	
66	#4	13'-9"	
67	#4	13'-9"	
68	#4	13'-9"	
69	#4	13'-9"	
70	#4	13'-9"	
71	#4	13'-9"	
72	#4	13'-9"	
73	#4	13'-9"	
74	#4	13'-9"	
75	#4	13'-9"	
76	#4	13'-9"	
77	#4	13'-9"	
78	#4	13'-9"	
79	#4	13'-9"	
80	#4	13'-9"	
81	#4	13'-9"	
82	#4	13'-9"	
83	#4	13'-9"	
84	#4	13'-9"	
85	#4	13'-9"	
86	#4	13'-9"	
87	#4	13'-9"	
88	#4	13'-9"	
89	#4	13'-9"	
90	#4	13'-9"	
91	#4	13'-9"	
92	#4	13'-9"	
93	#4	13'-9"	
94	#4	13'-9"	
95	#4	13'-9"	
96	#4	13'-9"	
97	#4	13'-9"	
98	#4	13'-9"	
99	#4	13'-9"	
100	#4	13'-9"	

Notes:  
Hatched areas indicate Concrete Removal.  
Cross-hatched areas shall be poured after  
barrier are in place.  
All edges shall have standard 2" chamfers  
except as noted.  
Expansion bolts shall be anchored in base  
concrete.  
For Concrete Removal sketch see sheet #3.



DESIGNED: *Richard M. P...*  
CHECKED: *E.A. Hoffman*  
DRAWN: *...*  
CHECKED: *E.A.H.*

EXAMINED: *...*  
PASSED: *...*  
APPROVED: *...*

**WEST ABUTMENT**  
**EARLY 1930s**  
**FORD COUNTY**  
**STA. 80+61.0**