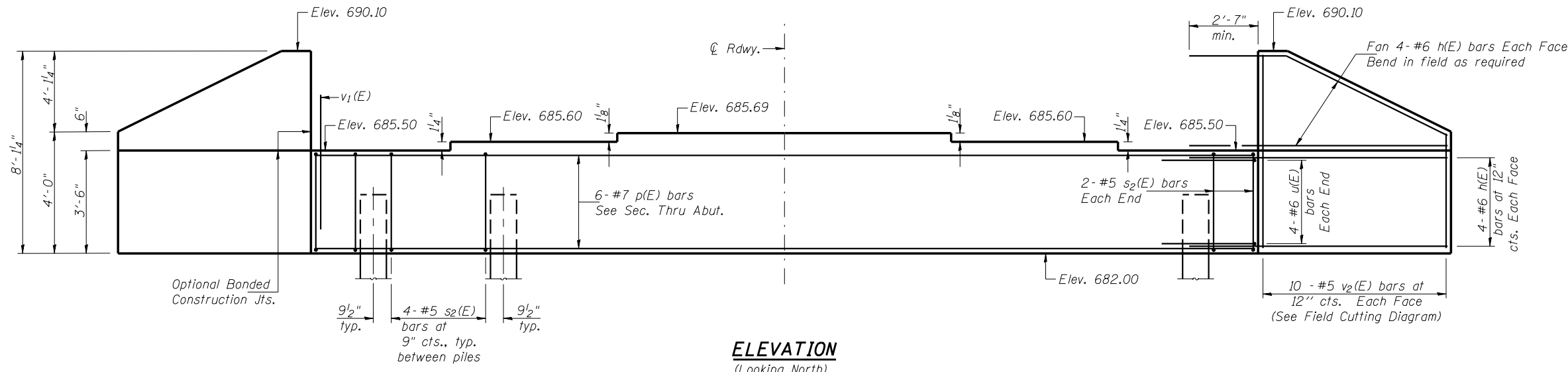


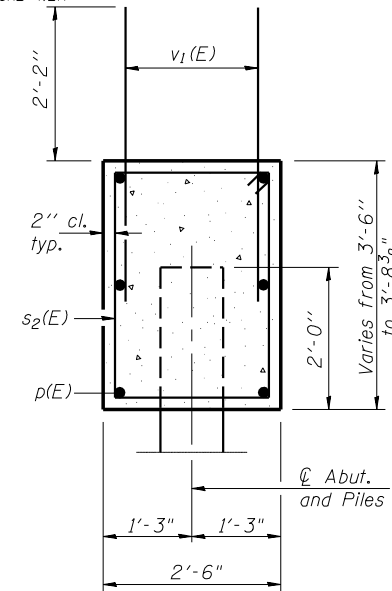
Notes: Pour steps monolithically with cap.  
Reinforcement bars designated (E) shall be epoxy coated.  
Space reinforcement in cap to miss anchor bolts.

ROUTE NO.	SECTION	COUNTY	TOTAL SHEETS	SHEET NO.	SHEET NO. 10
FAI 74	★	VERMILION	122	78	17 SHEETS
FED. ROAD DIST. NO. 7	ILLINOIS	FED. AID PROJECT			

★ (10-92-8HB-4)BR

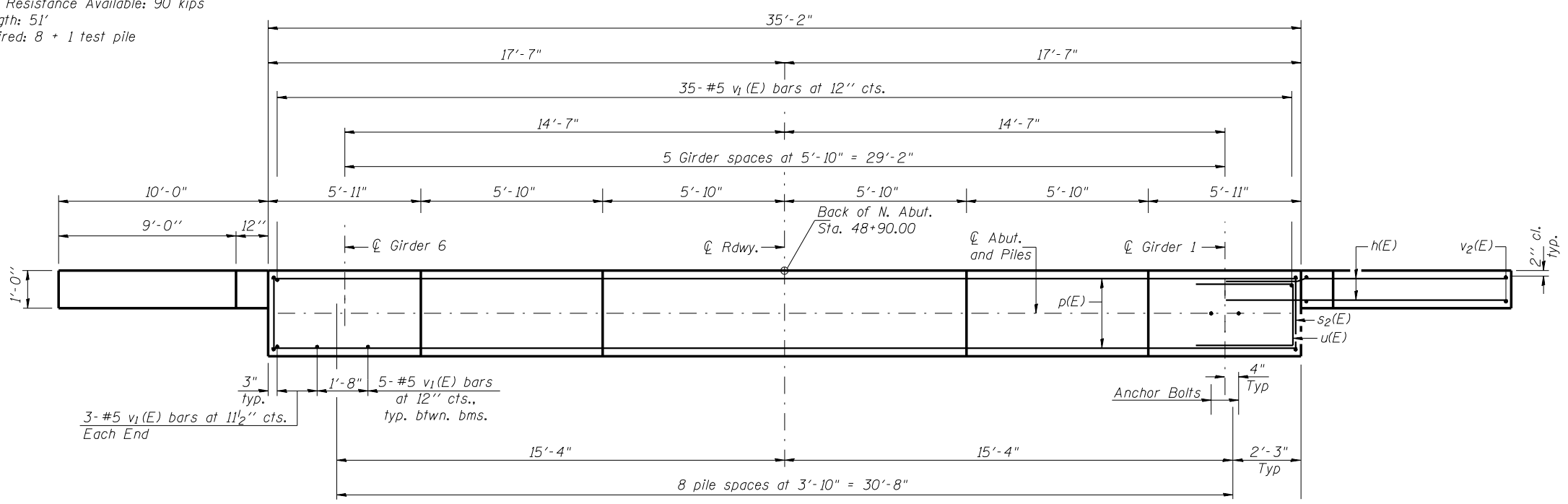


**ELEVATION**  
(Looking North)

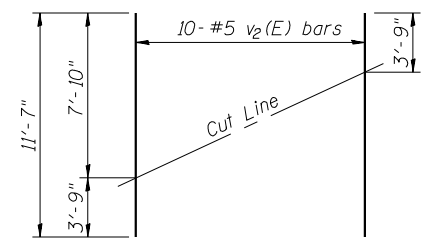


**SEC. THRU ABUT.**

**PILE DATA**  
Type & Size: Metal Shell - 14"  $\phi$  x 0.25" Walls  
Normal Req'd Bearing: 270 kips  
Allowable Resistance Available: 90 kips  
Est. Length: 51'  
No. Required: 8 + 1 test pile

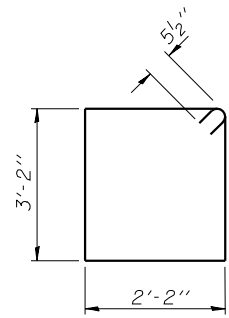


**PLAN**

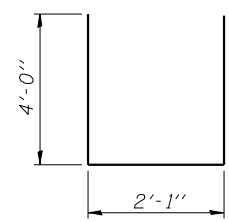


**FIELD CUTTING DIAGRAM**

Order v2(E) full length. Cut as shown and use remainder of bars in opposite face.



**BAR s2(E)**



**BAR u(E)**



**BILL OF MATERIAL**

Bar	No.	Size	Length	Shape	
h(E)	32	#6	12'-6"	—	
p(E)	6	#7	34'-11"	—	
s2(E)	24	#5	11'-7"	□	
u(E)	8	#6	10'-1"	—	
v1(E)	62	#5	4'-4"	—	
v2(E)	20	#5	11'-7"	—	
Concrete Structures				Cu. Yd.	15.6
Reinforcement Bars, Epoxy Coated				Pound	1970
Structure Excavation				Cu. Yd.	29.5
Furnishing Metal Shell Piles 14" x 0.25"				Foot	408
Driving Piles				Foot	408
Test Pile Metal Shells				Each	1

**LIN ENGINEERING, LTD.**  
210 W. Chestnut  
Chatham, Illinois 62629  
2071-853-669 FAX: 2071-853-4706  
Designed By: MTH Checked By: STD Drawn By: JMD  
Date: 11/02 File: 0920203.DGN

REVISIONS	
NAME	DATE

ILLINOIS DEPARTMENT OF TRANSPORTATION  
**NORTH ABUTMENT**  
FAP ROUTE 840 (IL 49N)  
OVER FAI RTE 74 (I-74)  
SECTION (10-92-8HB-4) BR  
VERMILION COUNTY  
STA. 1160+20.53 (I-74)  
STA. 50+00.00 (IL 49N)  
STRUCTURE NO. 092-0203