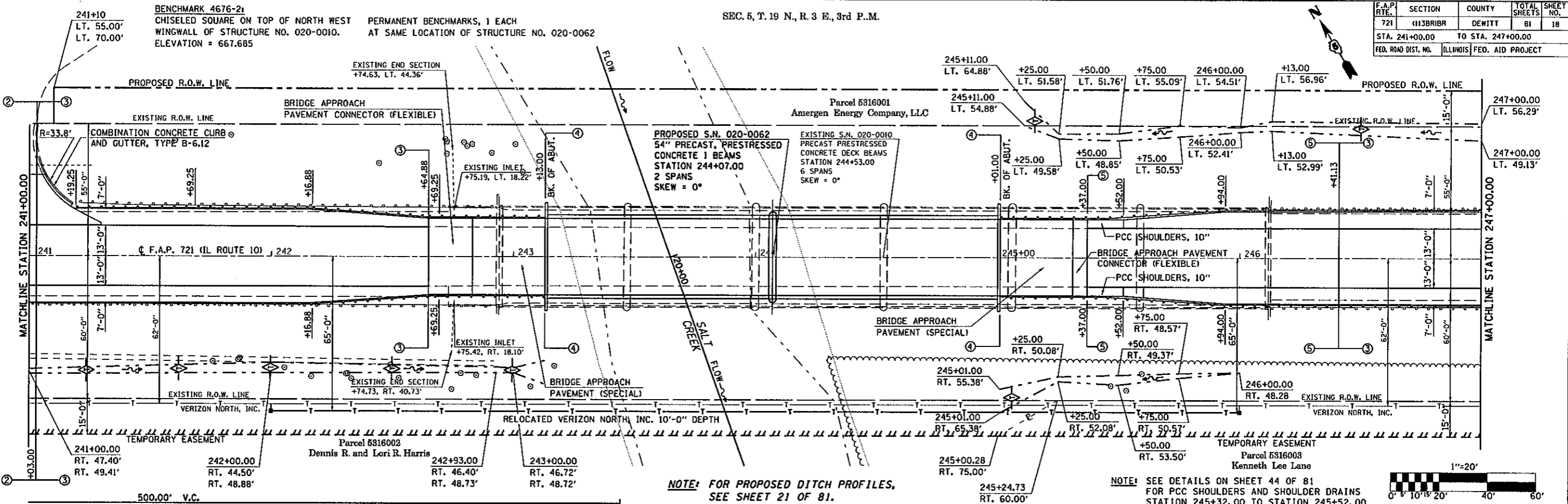


F.A.P. RTE.	SECTION	COUNTY	TOTAL SHEETS	SHEET NO.
721	113BRIBR	DEWITT	81	18
STA. 241+00.00 TO STA. 247+00.00		FED. ROAD DIST. NO. (ILLINOIS) FED. AID PROJECT		

SEC. 5, T. 19 N., R. 3 E., 3rd P.M.

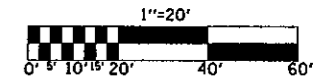
BENCHMARK 4676-2
CHISELED SQUARE ON TOP OF NORTH WEST WINGWALL OF STRUCTURE NO. 020-0010.
ELEVATION = 667.685

PERMANENT BENCHMARKS, 1 EACH AT SAME LOCATION OF STRUCTURE NO. 020-0062



NOTE: FOR PROPOSED DITCH PROFILES, SEE SHEET 21 OF 81.

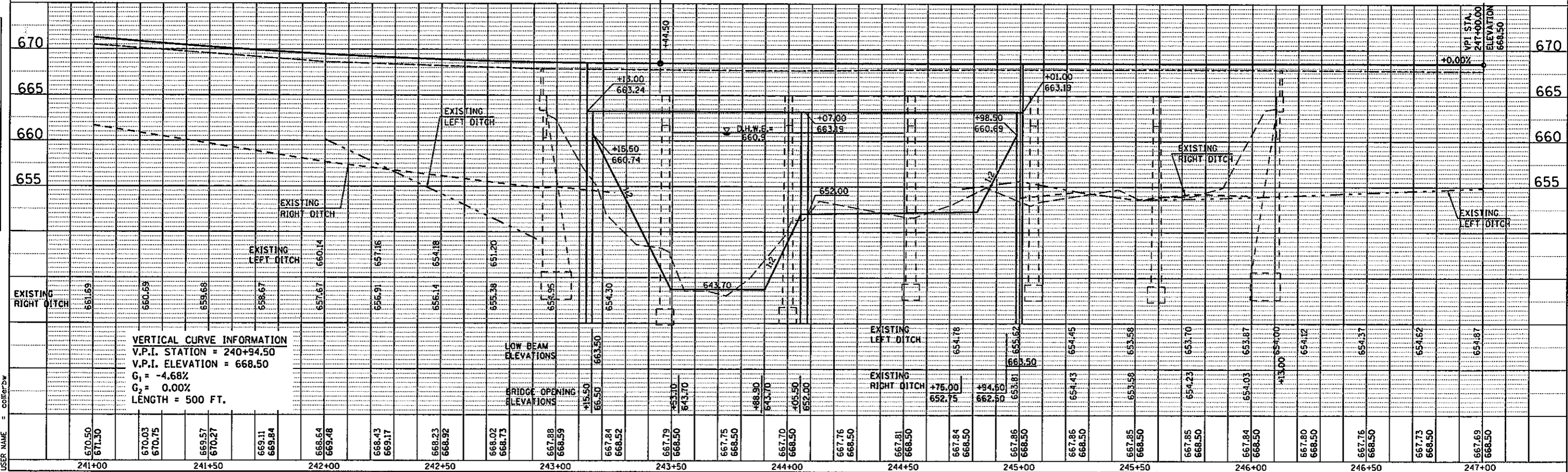
NOTE: SEE DETAILS ON SHEET 44 OF 81 FOR PCC SHOULDERS AND SHOULDER DRAINS STATION 245+32.00 TO STATION 245+52.00



DATE	BY

DATE	BY

PLOT DATE = 8/10/2007
FILE NAME = c:\projects\kds03002\193\p20.dgn
PLOT SCALE = 43.2335 / IN.
USER NAME = collinsdw



VERTICAL CURVE INFORMATION
V.P.I. STATION = 240+94.50
V.P.I. ELEVATION = 668.50
G₁ = -4.68%
G₂ = 0.00%
LENGTH = 500 FT.