

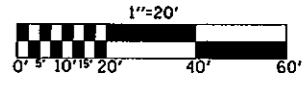
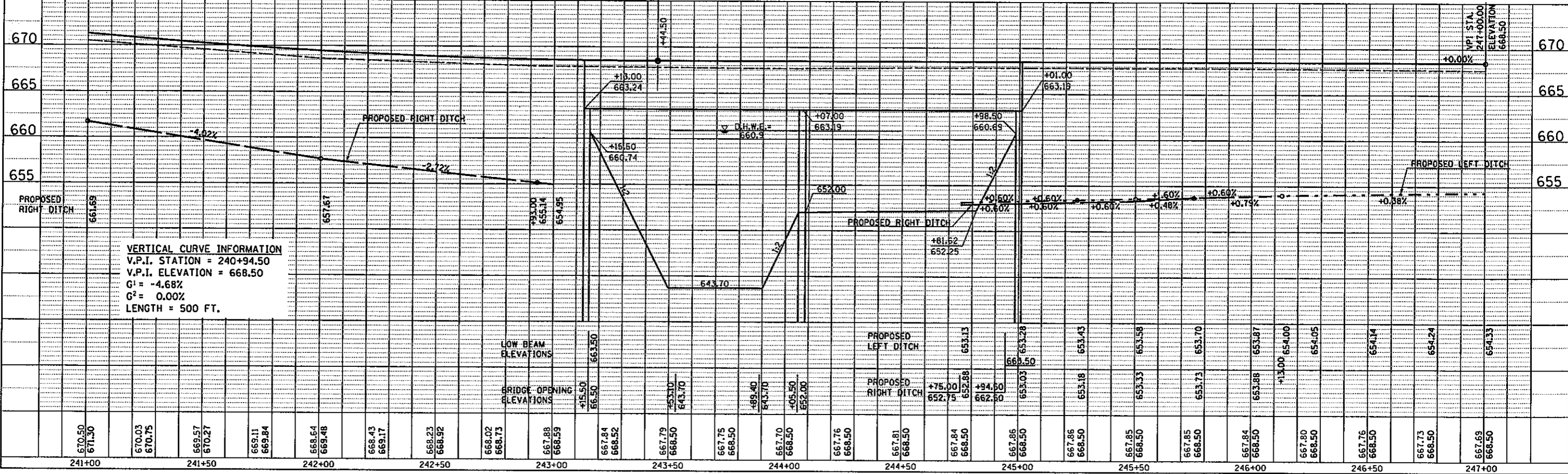
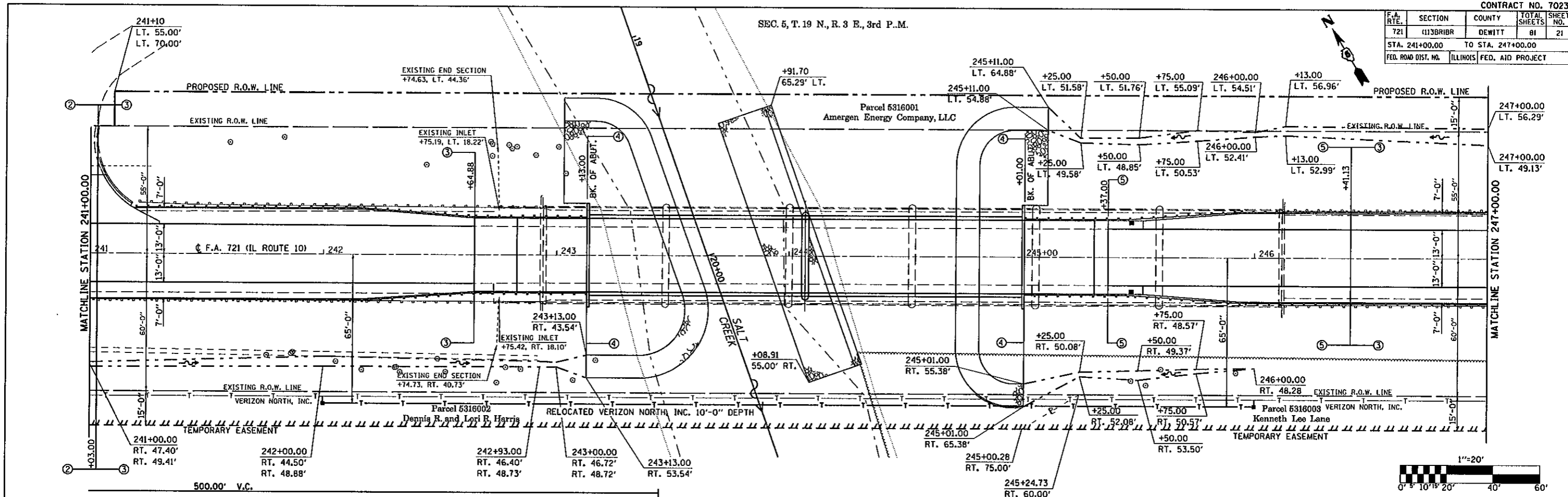
F.A. RTE.	SECTION	COUNTY	TOTAL SHEETS	SHEET NO.
721	113BRIBR	DEWITT	81	21
STA. 241+00.00 TO STA. 247+00.00				
FED. ROAD DIST. NO. ILLINOIS FED. AID PROJECT				

SEC. 5, T. 19 N., R. 3 E., 3rd P.M.

DATE	BY

DATE	BY

PLOT DATE = 8/10/2007  
 FILE NAME = c:\projects\ad503002\vb\1\70222p\ditches.dgn  
 PLOT SCALE = 43.2555' / IN.  
 USER NAME = cgl101r



Proposed Ditch Profiles