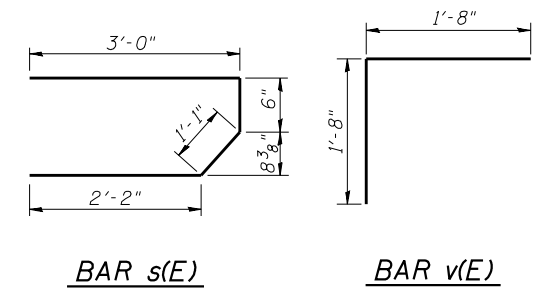
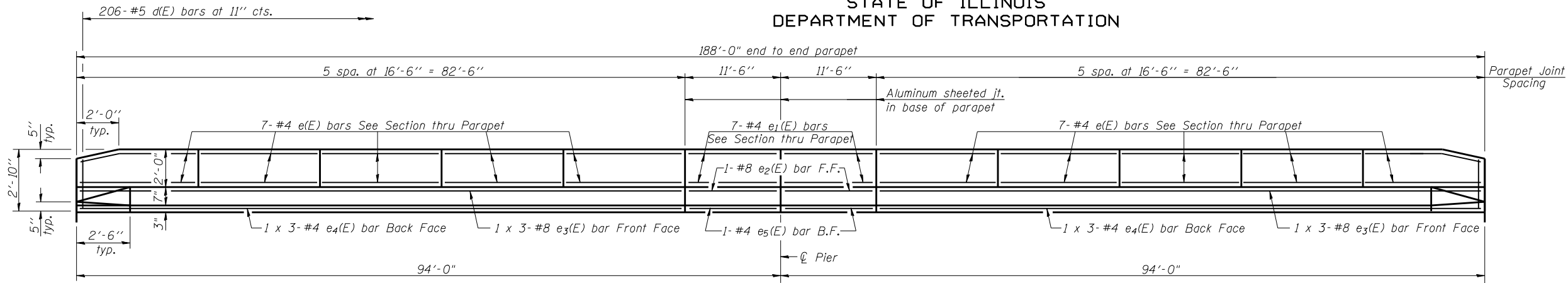


STATE OF ILLINOIS
DEPARTMENT OF TRANSPORTATION

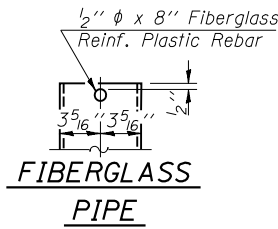
ROUTE NO.	SECTION	COUNTY	TOTAL SHEETS	SHEET NO.	SHEET NO. 7 18 SHEETS
F.A.P. 721	(113BR) BR	DEWITT	81	32	
FED. ROAD DIST. NO. 7	ILLINOIS	FED. AID PROJECT			

Contract #70232



MIN. BAR LAPS

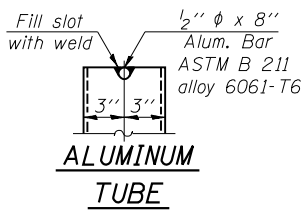
(Parapet)
#4 bars = 1'-4"
#8 bars = 3'-5"



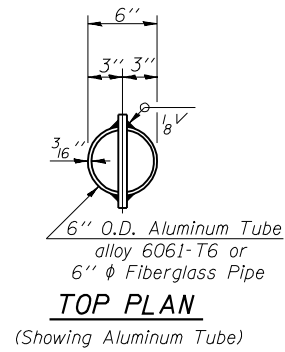
FIBERGLASS PIPE

INSIDE ELEVATION OF PARAPET

(Looking North)

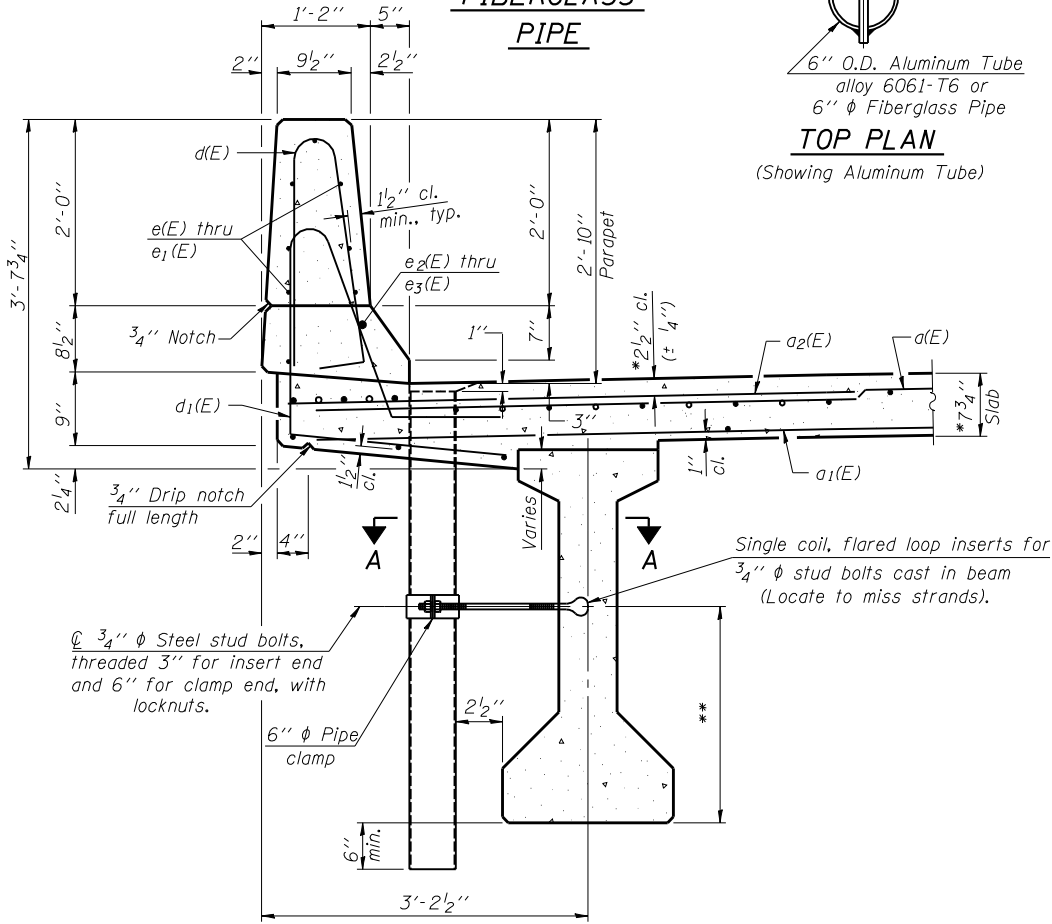


ALUMINUM TUBE



TOP PLAN

(Showing Aluminum Tube)

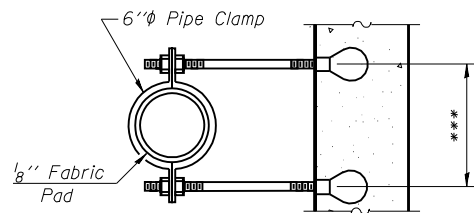


SECTION THRU PARAPET

*Prior to grinding
**For insert locations See sht. 11 of 18.

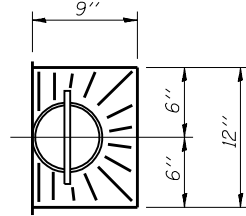
DESIGNED	Phillip R. Litchfield
CHECKED	Nick R. Barnett
DRAWN	R. Sommer
CHECKED	P.R.L./N.R.B.

EXAMINED	September 6, 2007	Thomas J. Domagala
PASSED		Ralph E. Anderson

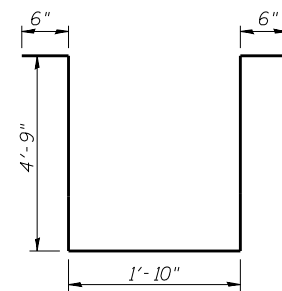


***Dimension as required by Pipe Clamp

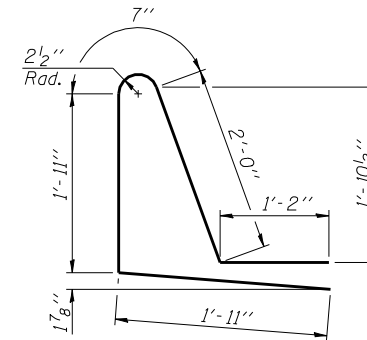
SECTION A-A



TOP PLAN



BAR s2(E)



BAR d1(E)

PARAPET JOINT DETAILS

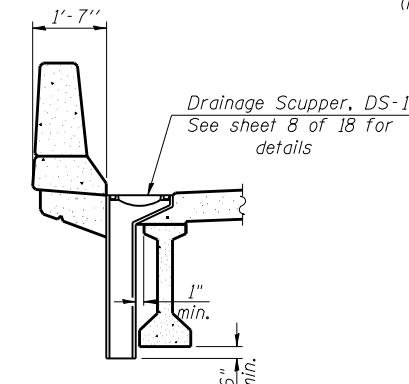
Notes:

Fiberglass pipe shall conform to ASTM D2996, with short-time rupture strength hoop tensile stress of 30,000 p.s.i. minimum.
The exterior surfaces of the floor drains shall be coated or pigmented by the manufacturer with a color that matches the concrete.
The clamping device and inserts shall be galvanized according to AASHTO M 232.

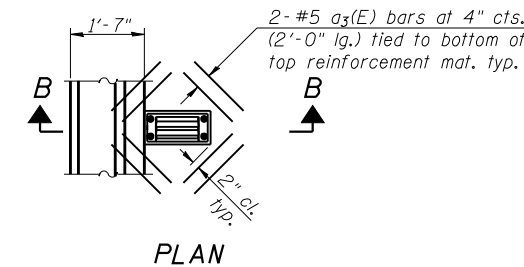
Non-staining gray one component non-sag elastomeric gun grade polyurethane sealant meeting the requirements of ASTM C-920, Type S, Grade NS, Class 25. Use T with a 5/8" backer rod.

1/2" Preformed Self-Expanding Cork Joint Filler according to Article 1051.07 of the Std. Spec. Cost included with Concrete Superstructure.

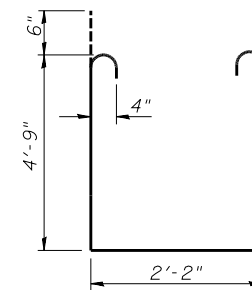
Const. Jts. at Piers 1/8" Aluminum sheet ASTM B 209 alloy 3003-H14. Cost included with Concrete Superstructure



SECTION B-B



PLAN



BAR s1(E)

SUPERSTRUCTURE

BILL OF MATERIAL

Bar	No.	Size	Length	Shape
a(E)	302	#5	34'-6"	—
a1(E)	227	#5	32'-10"	—
a2(E)	302	#6	6'-0"	—
a3(E)	16	#5	2'-0"	—
b(E)	266	#5	28'-8"	—
b1(E)	70	#6	37'-2"	—
b2(E)	186	#5	33'-1"	—
d(E)	412	#5	5'-7"	—
d1(E)	412	#5	7'-7"	—
e(E)	140	#4	16'-3"	—
e1(E)	28	#4	11'-3"	—
e2(E)	4	#8	11'-3"	—
e3(E)	12	#8	29'-9"	—
e4(E)	12	#4	28'-4"	—
e5(E)	4	#4	11'-3"	—
m(E)	6	#6	34'-10"	—
m1(E)	4	#6	33'-0"	—
m2(E)	24	#6	8'-4"	—
m3(E)	20	#6	3'-7"	—
m4(E)	4	#6	1'-11"	—
m5(E)	6	#8	5'-10"	—
m6(E)	20	#4	4'-11"	—
s(E)	62	#5	6'-9"	—
s1(E)	52	#4	12'-8"	—
s2(E)	20	#4	12'-4"	—
v(E)	68	#5	3'-4"	—
Reinforcement Bars, Epoxy Coated		Pound	50760	
Concrete Superstructure		Cu. Yds.	242	

Bars indicated thus 1 x 2-#5 etc. indicates 1 line of bars with 2 lengths per line.

SUPERSTRUCTURE DETAILS
F.A.P. ROUTE 721 - SECTION (113BR)BR
DEWITT COUNTY
STATION 244+07.00
STRUCTURE NO. 020-0062