

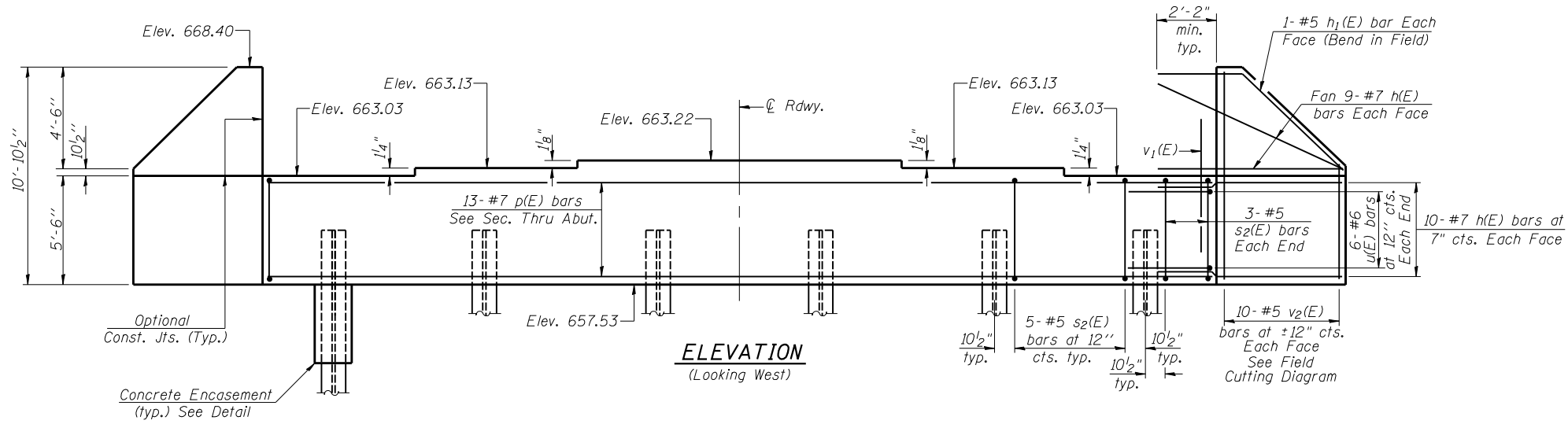
STATE OF ILLINOIS
DEPARTMENT OF TRANSPORTATION

ROUTE NO.	SECTION	COUNTY	TOTAL SHEETS	SHEET NO.
F.A.P. 721	(113BR) BR	DEWITT	81	38
FED. ROAD DIST. NO. 7		ILLINOIS	FED. AID PROJECT	

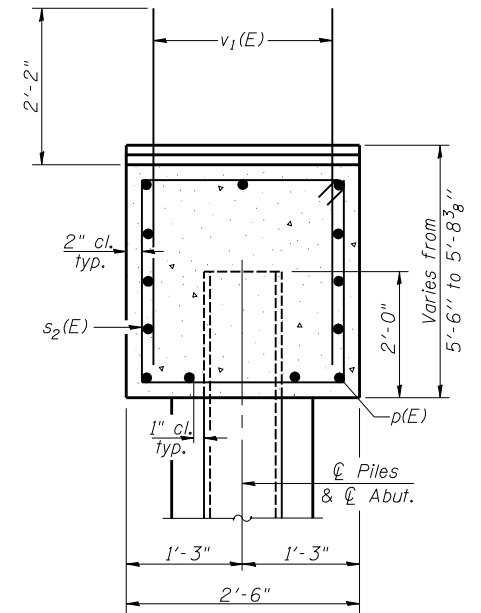
Contract #70232

SHEET NO. 13
18 SHEETS

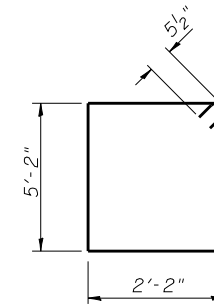
Notes:
Pour steps monolithically with cap.
Space reinforcement in cap to miss anchor bolts.
For anchor bolt installation details see sheet 16 of 18.



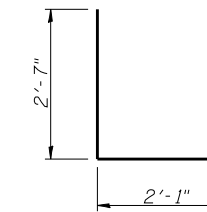
ELEVATION
(Looking West)



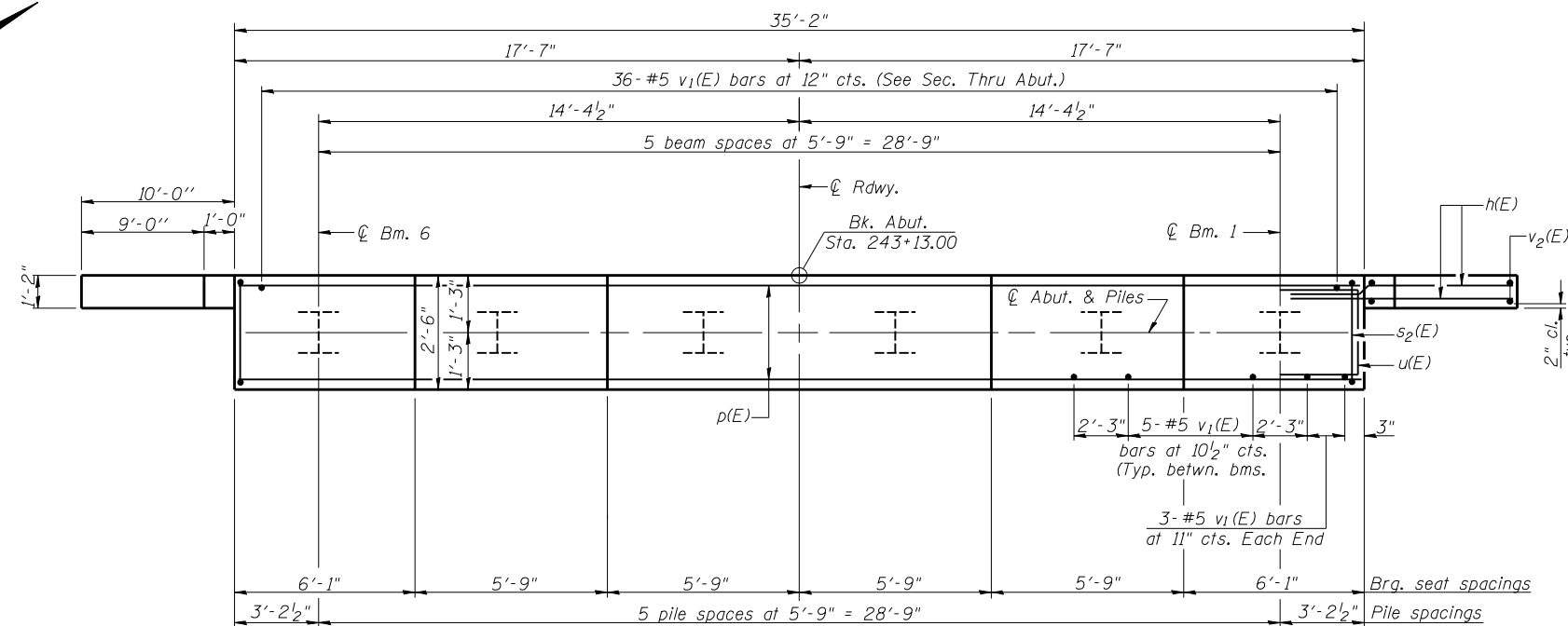
SEC. THRU ABUT.



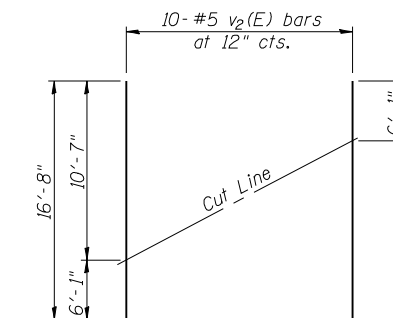
BAR s2(E)



BAR u(E)



PLAN



FIELD CUTTING DIAGRAM

Order v2(E) bars full length. Cut as shown and use remainder of bars in opposite face.

BILL OF MATERIAL

Bar	No.	Size	Length	Shape
h(E)	76	#6	12'-0"	—
h1(E)	4	#5	13'-2"	—
p(E)	13	#7	34'-10"	—
s2(E)	31	#5	15'-7"	U
u(E)	12	#6	7'-3"	U
v1(E)	67	#5	4'-4"	—
v2(E)	20	#5	16'-8"	—
Concrete Structures			Cu. Yd.	26
Reinforcement Bars, Epoxy Coated			Pound	3640
Furnishing Steel Piles HP12x63			Foot	210
Driving Piles			Foot	210
Structure Excavation			Cu. Yd.	103
Test Pile Steel HP 12x63			Each	1
Concrete Encasement			Cu. Yd.	2.1

PILE DATA

Type: HP12x63
Nominal Required Bearing: 429 kips
Allowable Resistance Available: 143 kips
Est. Length: 42 ft.
No. Required: 5+1 Test Pile

DESIGNED	Phillip R. Litchfield
CHECKED	Nick R. Barnett
DRAWN	R. Sommer
CHECKED	P.R.L./N.R.B.

EXAMINED	September 6, 2007	Thomas J. Domagala
PASSED		Ralph E. Anderson

WEST ABUTMENT
F.A.P. ROUTE 721 - SECTION (113BR)BR
DEWITT COUNTY
STATION 244+07.00
STRUCTURE NO. 020-0062