

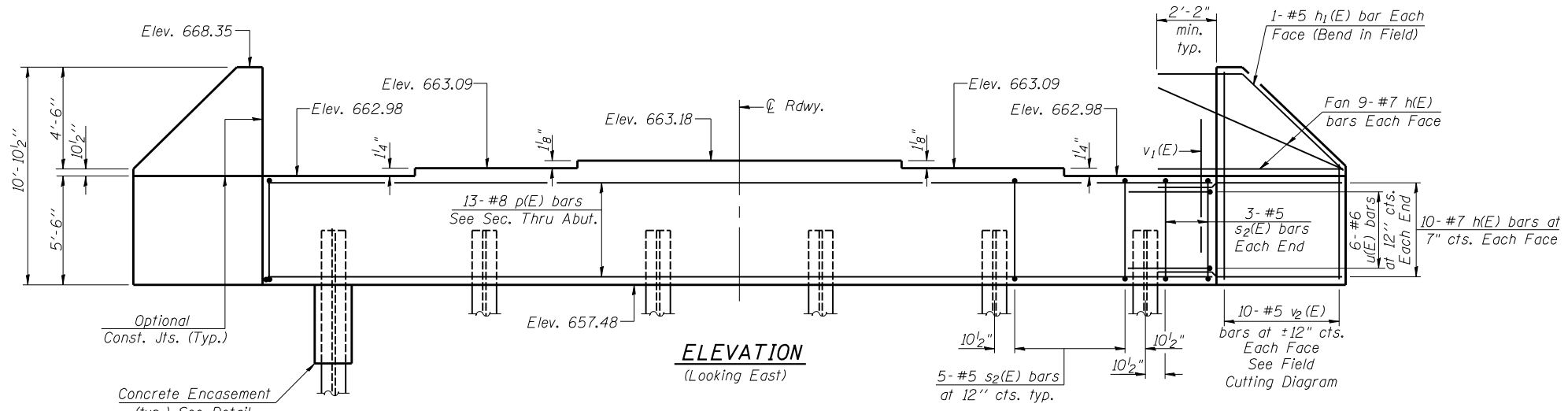
STATE OF ILLINOIS
DEPARTMENT OF TRANSPORTATION

| | | | | |
|-----------------------|------------|------------------|--------------|-----------|
| ROUTE NO. | SECTION | COUNTY | TOTAL SHEETS | SHEET NO. |
| F.A.P. 721 | (113BR) BR | DEWITT | 81 | 39 |
| FED. ROAD DIST. NO. 7 | ILLINOIS | FED. AID PROJECT | | |

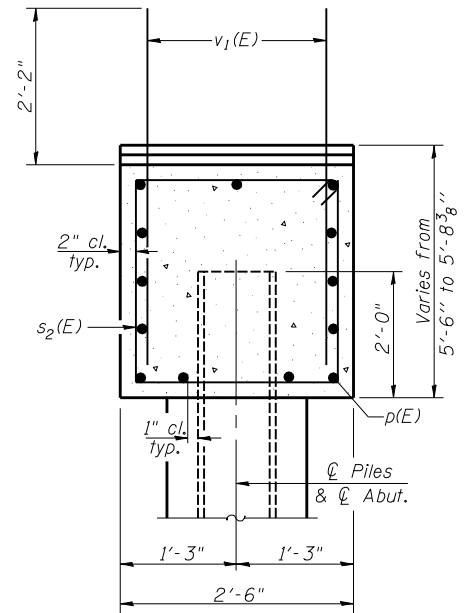
SHEET NO. 14
18 SHEETS

Contract #70232

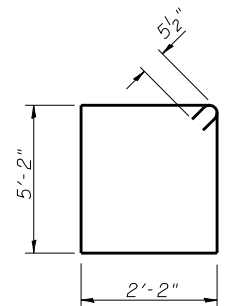
Notes:
Four steps monolithically with cap.
Space reinforcement in cap to miss anchor bolts.
For anchor bolt installation details see sheet 16 of 18.



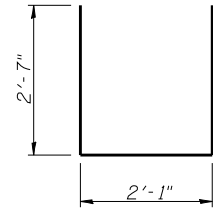
ELEVATION
(Looking East)



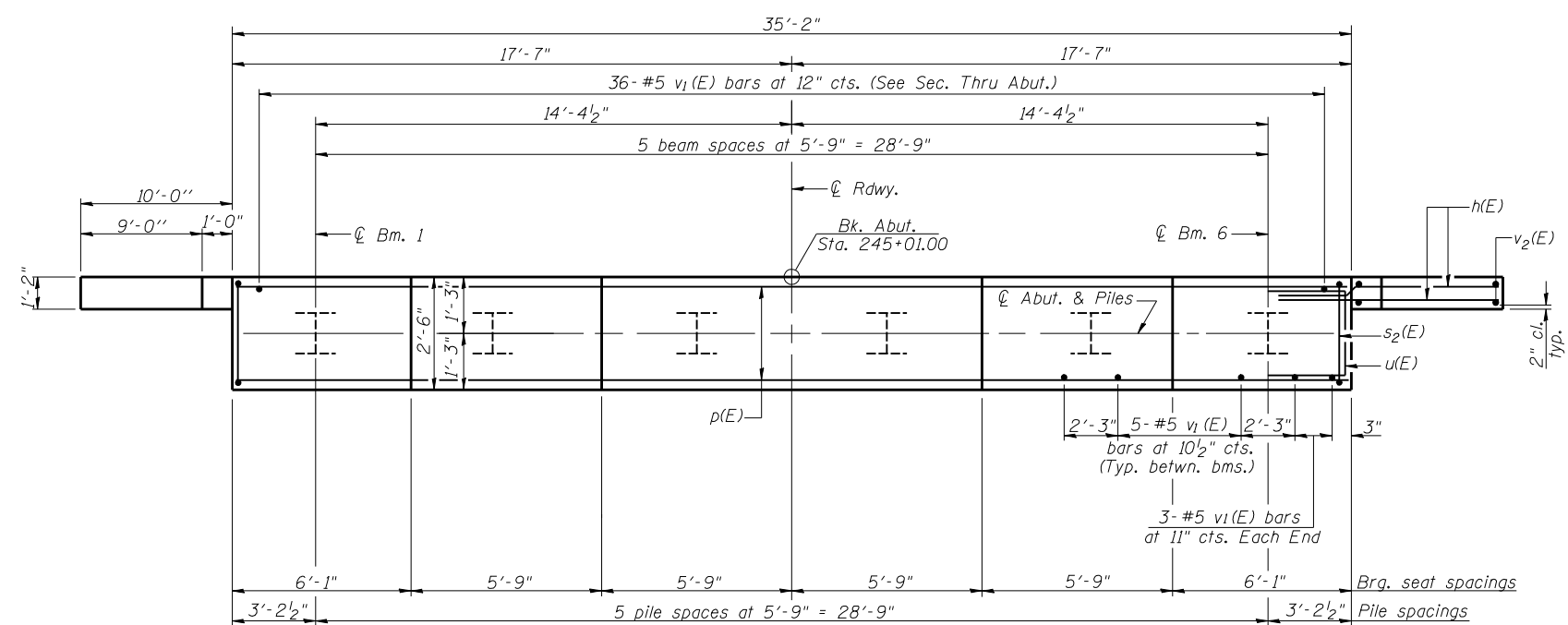
SEC. THRU ABUT.



BAR s2(E)



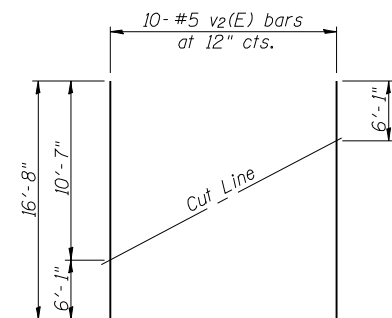
BAR u(E)



PLAN

BILL OF MATERIAL

| Bar No. | Size | Length | Shape |
|----------------------------------|---------|---------|-------|
| h(E) 76 | #6 | 12'-0" | — |
| h1(E) 4 | #5 | 13'-2" | — |
| p(E) 13 | #7 | 34'-10" | — |
| s2(E) 31 | #5 | 15'-7" | □ |
| u(E) 12 | #6 | 7'-3" | □ |
| v1(E) 67 | #5 | 4'-4" | — |
| v2(E) 20 | #5 | 16'-8" | — |
| Concrete Structures | Cu. Yd. | 26 | |
| Reinforcement Bars, Epoxy Coated | Pound | 3640 | |
| Furnishing Steel Piles HP12x63 | Foot | 265 | |
| Driving Piles | Foot | 265 | |
| Structure Excavation | Cu. Yd. | 103 | |
| Test Pile Steel HP 12x63 | Each | 1 | |
| Concrete Encasement | Cu. Yd. | 2.1 | |



FIELD CUTTING DIAGRAM

Order v2(E) bars full length. Cut as shown and use remainder of bars in opposite face.

Note: Piles shall be driven through 1'-6" diameter precored holes extending to elevation 649.40 feet according to Article 512.09(c) of the Standard Specifications. Cost included in driving piles.

| | |
|----------|-----------------------|
| DESIGNED | Phillip R. Litchfield |
| CHECKED | Nick R. Barnett |
| DRAWN | R. Sommer |
| CHECKED | P.R.L./N.R.B. |

| | | |
|----------|-------------------|----------------------|
| EXAMINED | September 6, 2007 | Thomas J. Domagalaki |
| PASSED | | Ralph E. Anderson |

PILE DATA

Type: HP12x63
Nominal Required Bearing: 489 kips
Allowable Resistance Available: 143 kips
Est. Length: 53 ft.
No. Required: 5+1 Test Pile

EAST ABUTMENT
F.A.P. ROUTE 721 - SECTION (113BR)BR
DEWITT COUNTY
STATION 244+07.00
STRUCTURE NO. 020-0062