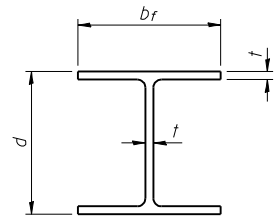


STATE OF ILLINOIS
DEPARTMENT OF TRANSPORTATION

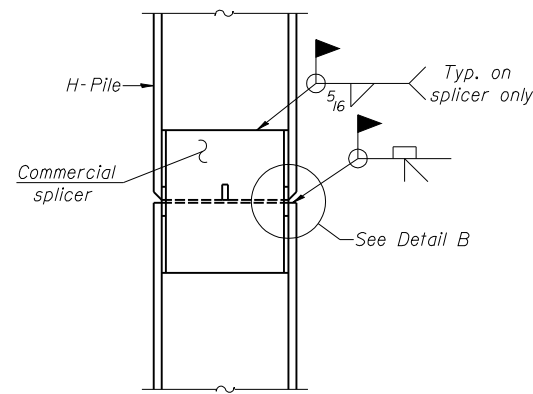
ROUTE NO. F.A.P. 721	SECTION (113BR) BR	COUNTY DEWITT	TOTAL SHEETS 81	SHEET NO. 41
SHEET NO. 16 18 SHEETS				
FED. ROAD DIST. NO. 7		ILLINOIS	FED. AID PROJECT	

Contract #70232

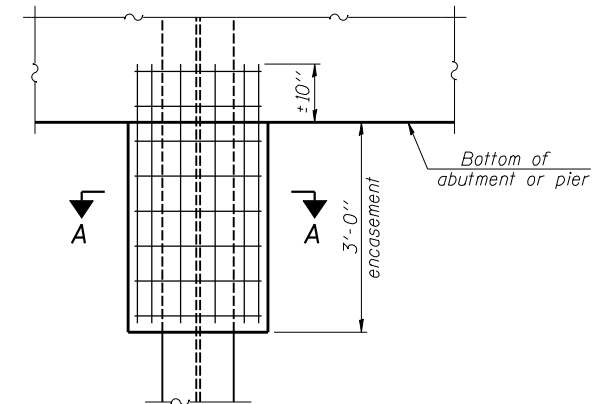


STEEL PILE TABLE

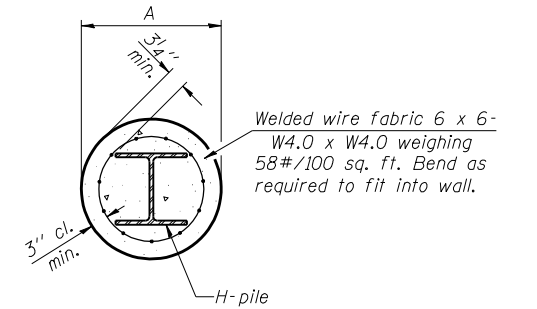
Designation	Depth d	Flange width b _f	Web and Flange thickness t	Encasement diameter A
HP 14x117	14 1/4"	14 7/8"	1 3/16"	30"
x102	14"	14 3/4"	1/16"	30"
x89	13 7/8"	14 3/4"	5/8"	30"
x73	13 5/8"	14 5/8"	1/2"	30"
HP 12x84	12 1/4"	12 1/4"	1/16"	24"
x74	12 3/8"	12 1/4"	5/8"	24"
x63	12"	12 1/8"	1/2"	24"
x53	11 3/4"	12"	7/16"	24"
HP 10x57	10"	10 1/4"	9/16"	24"
x42	9 3/4"	10 1/8"	7/16"	24"
HP 8x36	8"	8 1/8"	7/16"	18"



ELEVATION



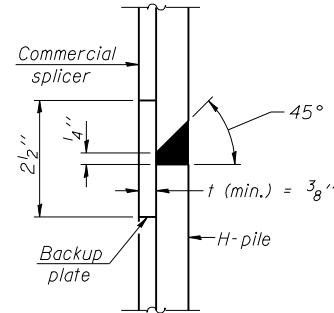
ELEVATION



SECTION A-A

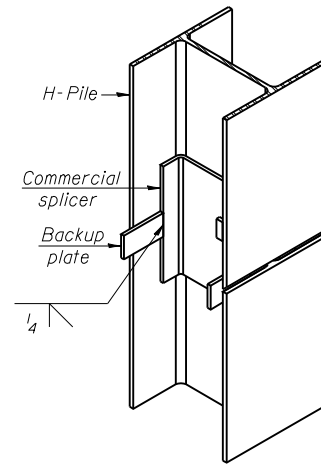
Note:
Forms for encasement may be omitted when soil conditions permit.

PILE ENCASEMENT

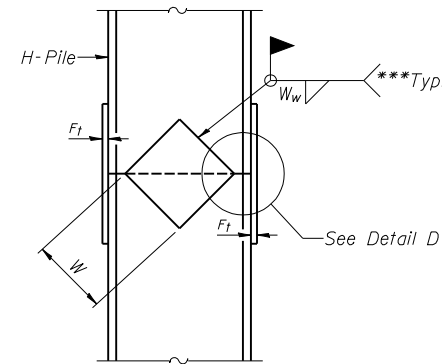


DETAIL B

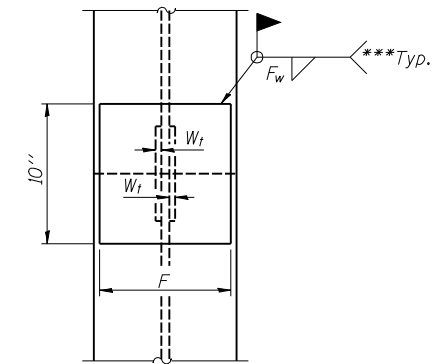
WELDED COMMERCIAL SPLICE



ISOMETRIC VIEW

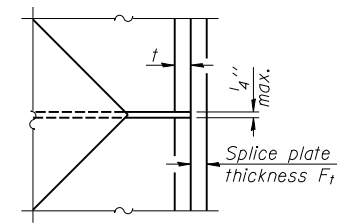


ELEVATION



END VIEW

Designation	F	F _t	F _w	W	W _t	W _w
HP 14x117	12 1/2"	1"	7/8"	7 3/4"	5 8"	1/2"
x102	12 1/2"	7/8"	3/4"	7 3/4"	5 8"	1/2"
x89	12 1/2"	3/4"	1/16"	7 3/4"	5 8"	1/2"
x73	12 1/2"	5/8"	9/16"	7 3/4"	5 8"	1/2"
HP 12x84	10"	7/8"	1/16"	6 1/2"	5 8"	1/2"
x74	10"	7/8"	1/16"	6 1/2"	5 8"	1/2"
x63	10"	5/8"	1/2"	6 1/2"	1/2"	3/8"
x53	10"	5/8"	1/2"	6 1/2"	1/2"	3/8"
HP 10x57	8"	3/4"	9/16"	5 1/4"	1/2"	3/8"
x42	8"	5/8"	9/16"	5 1/4"	1/2"	3/8"
HP 8x36	7"	5/8"	7/16"	4 1/4"	1/2"	3/8"

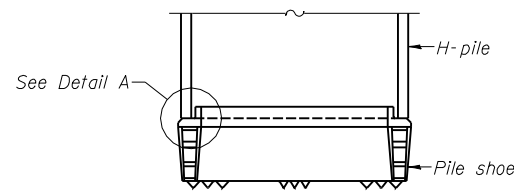


DETAIL D

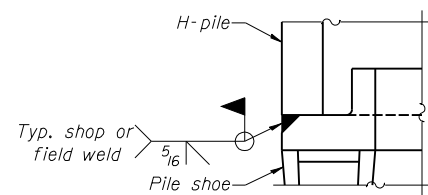
WELDED PLATE FIELD SPLICE

Note:
The steel H-piles shall be according to AASHTO M270 Grade 50.

PILE DETAILS
F.A.P. ROUTE 721 - SECTION (113BR)BR
DEWITT COUNTY
STATION 244+07.00
STRUCTURE NO. 020-0062

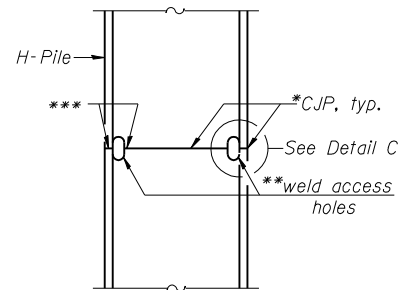


ELEVATION



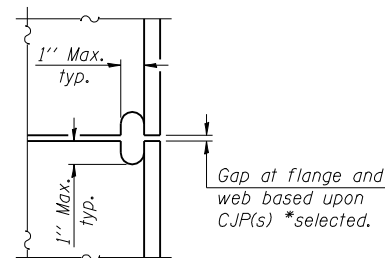
DETAIL A

H-PILE SHOE ATTACHMENT



ELEVATION

COMPLETE PENETRATION WELD SPLICE



DETAIL C

*Use joint conforming to Figure 3.4 in AWS D1.1, Structure Welding Code-Steel.
**Preparation per Fig. 5.2 in AWS D1.1, Structure Welding Code-Steel.
***Interrupt welds 1/4" from end of each pile.

DESIGNED Phillip R. Litchfield
CHECKED Nick R. Barnett
DRAWN R. Sommer
CHECKED P.R.L./N.R.B.

September 6, 2007
EXAMINED Thomas J. Domagala
PASSED Ralph E. Anderson