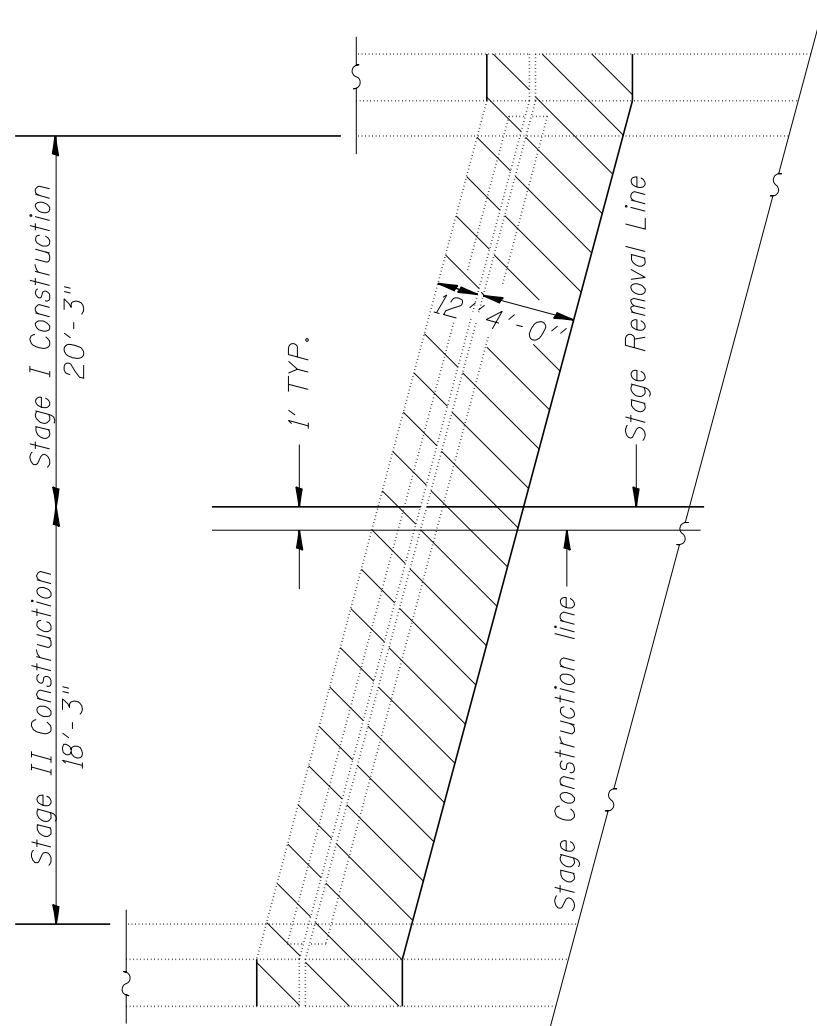
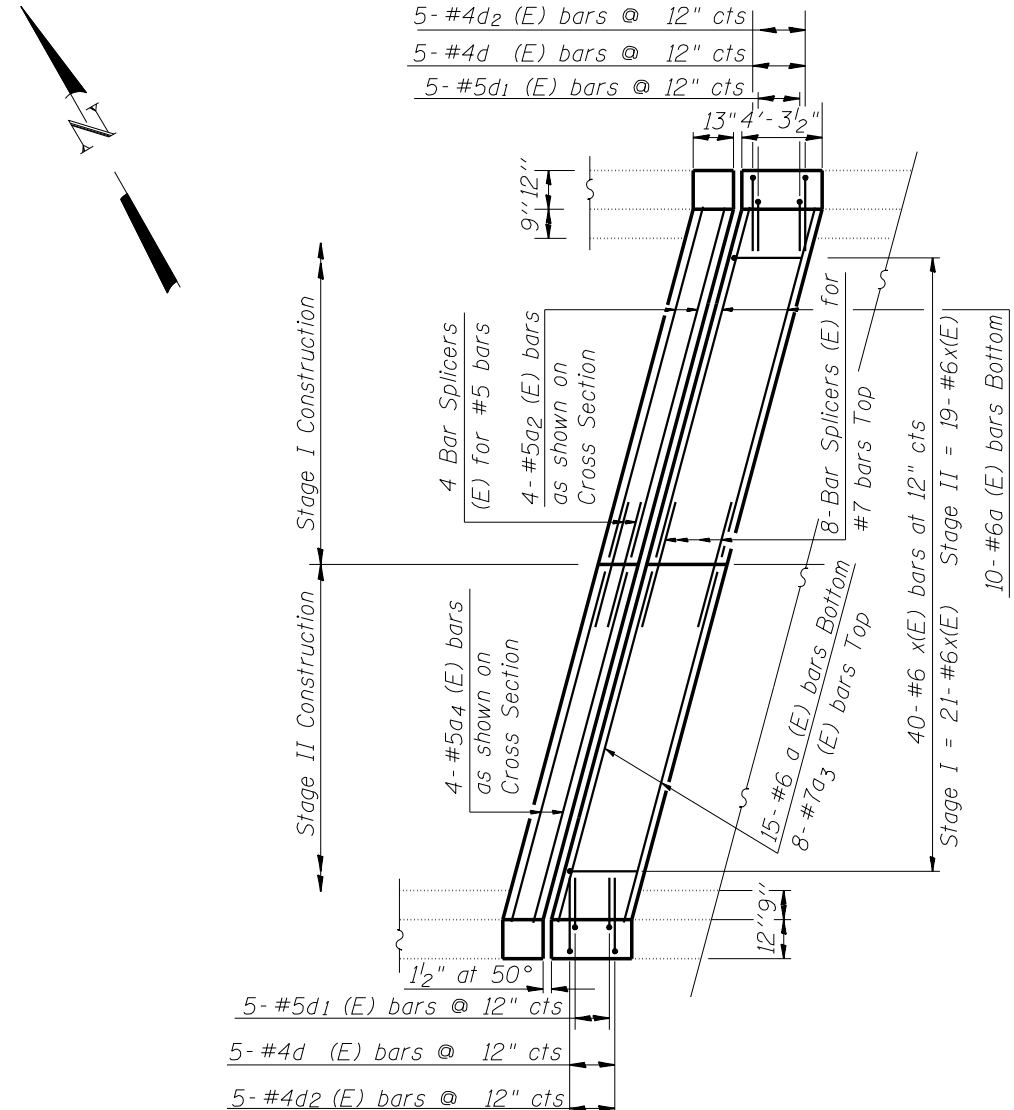


JOINT REPAIR AT WEST ABUTMENT

SN 057-0129



EXISTING PARTIAL PLAN
JOINT AT WEST ABUTMENT



PROPOSED PARTIAL PLAN
JOINT AT WEST ABUTMENT

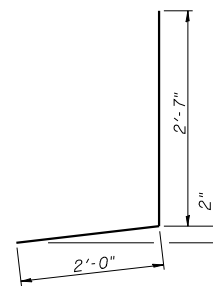
BILL OF MATERIAL

Bar	No.	Size	Length	Shape
a (E)	25	#6	6'-9"	—
a ₁ (E)	8	#7	22'-9"	—
a ₂ (E)	4	#5	22'-9"	—
a ₃ (E)	8	#7	20'-7"	—
a ₄ (E)	4	#5	20'-7"	—
d(E)	10	#4	4'-7"	J
d(E)	10	#5	3'-5"	J
d ₂ (E)	10	#4	2'-1"	□
x(E)	40	#6	7'-10"	⊔
Reinforcement Bars, Epoxy Coated			Pound	1,695
Bar Splicers			Each	12

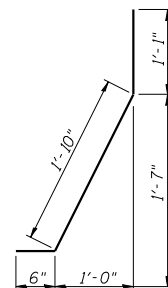
Reinforcement bars designated (E) shall be epoxy coated.

Hatched area indicates Concrete Removal.

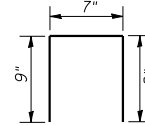
See Sheet 10 of 14 for Section Thru Parapet and Proposed Joint Section



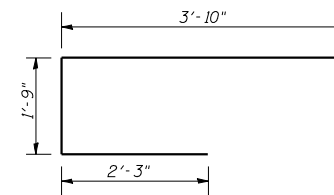
BAR d(E)



BAR d₁(E)



BAR d₂(E)



BAR x(E)