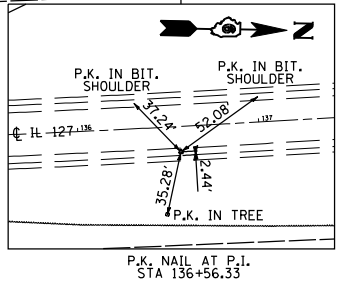
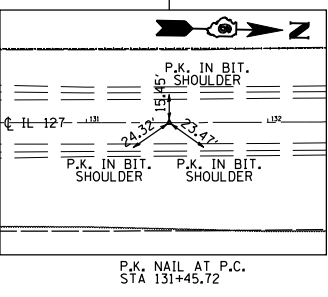
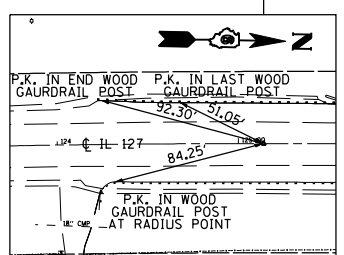
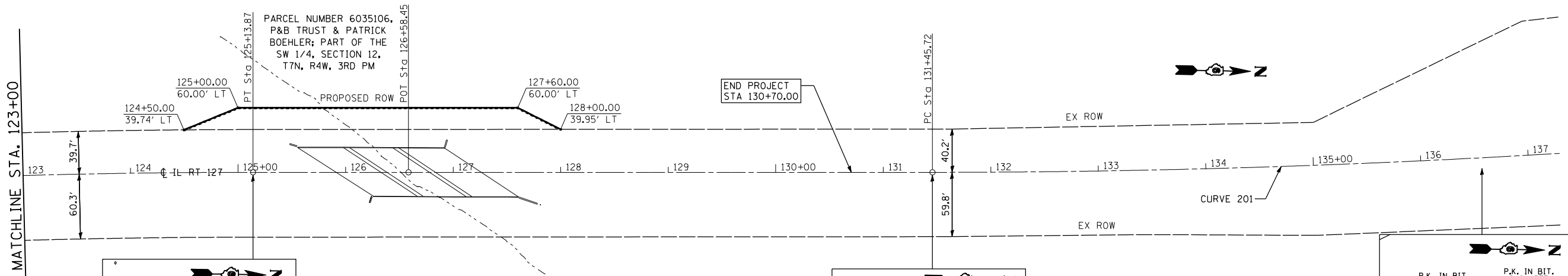
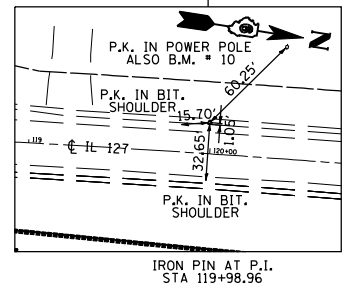
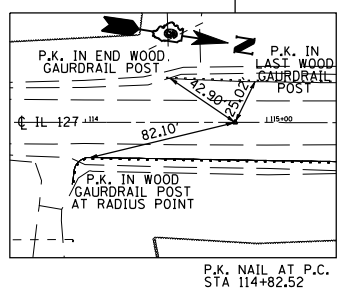
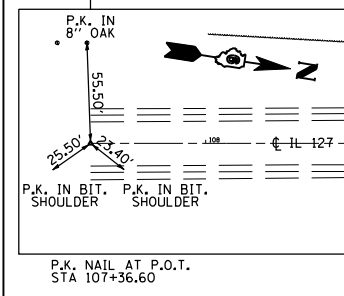
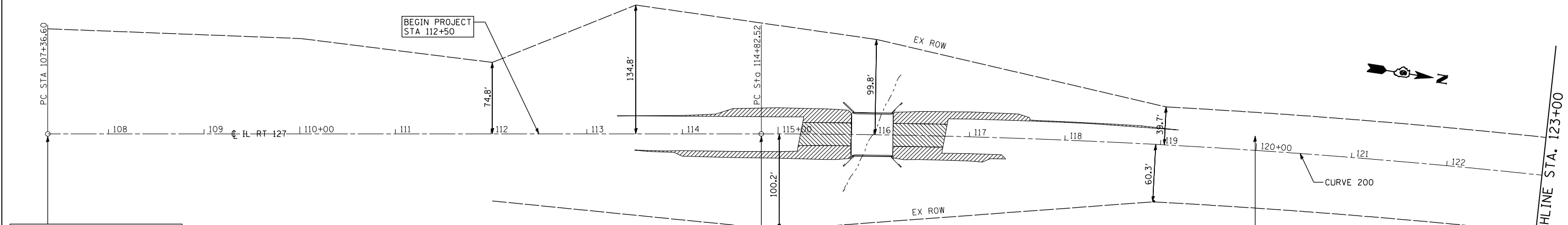


F.A.P. RTE.	SECTION	COUNTY	TOTAL SHEETS	SHEET NO.
42	106(B-1,B-2)	MONTGOMERY	61	8
STA. 112+50.00		TO STA. 130+70.00		
FED. ROAD DIST. NO.		ILLINOIS	FED. AID PROJECT	



BENCHMARKS

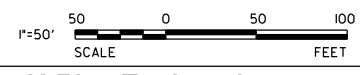
B.M. # 10
SPIKE NAIL IN POWER POLE
62' LT. STA 120+39
ELEVATION 560.27

B.M. # 10A
CHISLED □ ON WING WALL NE
CORNER OF STRUCTURE # 068-0024
25' RT. STA 116+20.5
ELEVATION 563.69

B.M. # 10B
CHISLED □ ON WING WALL SW
CORNER OF STRUCTURE # 068-0023
23.5' LT. STA 125+55
ELEVATION 564.12

B.M. # 12
SPIKE NAIL IN POWER POLE FROM
PLANS, JUST SOUTH OF ROCK PE TO
PRAIRIE CHICKEN SPORTING CLAYS
125' LT. STA 134+32
ELEVATION 560.85

<p>EXISTING CURVE 200</p> <p>P.I. STA= 119+98.96 Δ= 7° 39' 05" (RT) D= 0° 44' 31" R= 7,722.91' T= 516.44' L= 1,031.35' E= 17.25' e= ----- T.R.= ----- S.E. RUN= ----- P.C. STA= 114+82.52 P.T. STA= 125+13.87</p>	<p>EXISTING CURVE 201</p> <p>P.I. STA= 136+56.33 Δ= 6° 03' 41" (LT) D= 0° 35' 39" R= 9,644.25' T= 510.62' L= 1,020.28' E= 13.51' e= ----- T.R.= ----- S.E. RUN= ----- P.C. STA= 131+45.72 P.T. STA= 141+66.00</p>
---	---



K+ K-Plus Engineering, Ltd.
753 WINDSOR ROAD
CHARLESTON, IL 61920
(217) 348-1500
WWW.K-PLUSENGINEERING.LTD.COM
ILLINOIS DEPARTMENT OF PROFESSIONAL REGULATION REGISTRATION #184-003685

THIS DOCUMENT IS THE PROPERTY OF K-PLUS ENGINEERING, LTD. AND NO PART HEREIN SHALL BE USED EXCEPT FOR THIS SPECIFIC PROJECT WITHOUT THE WRITTEN CONSENT OF K-PLUS ENGINEERING, LTD.

REVISIONS	
NAME	DATE

ILLINOIS DEPARTMENT OF TRANSPORTATION
**ALIGNMENT, BENCHMARK,
ROW AND TIES**

FAP 42 (IL RTE, 127)
SECTION 106 (B-1, B-2)
MONTGOMERY COUNTY

SCALE: VERT. 8-07-07
HORIZ. 8-07-07

DRAWN BY ADG
CHECKED BY DC

PLOT DATE = Aug-16-2007 11:00:00 AM
FILE NAME = c:\p\projects\46555818\kpluseng-fina\08-abt-1.dwg
PLOT SCALE = 1/8"=1'-0" / IN.
USER NAME = laughlinr-1