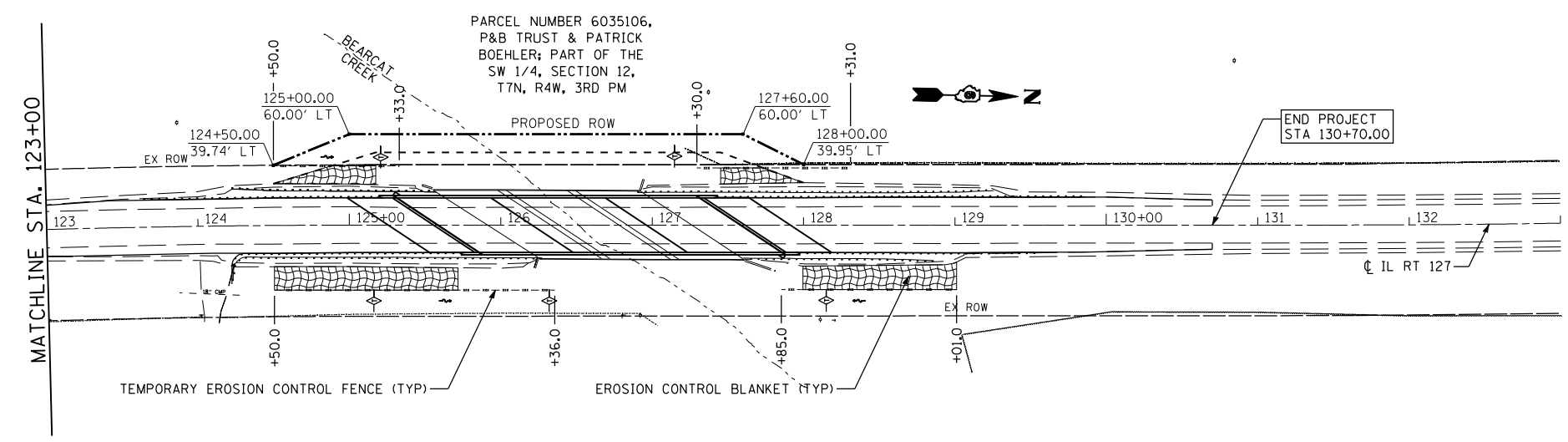
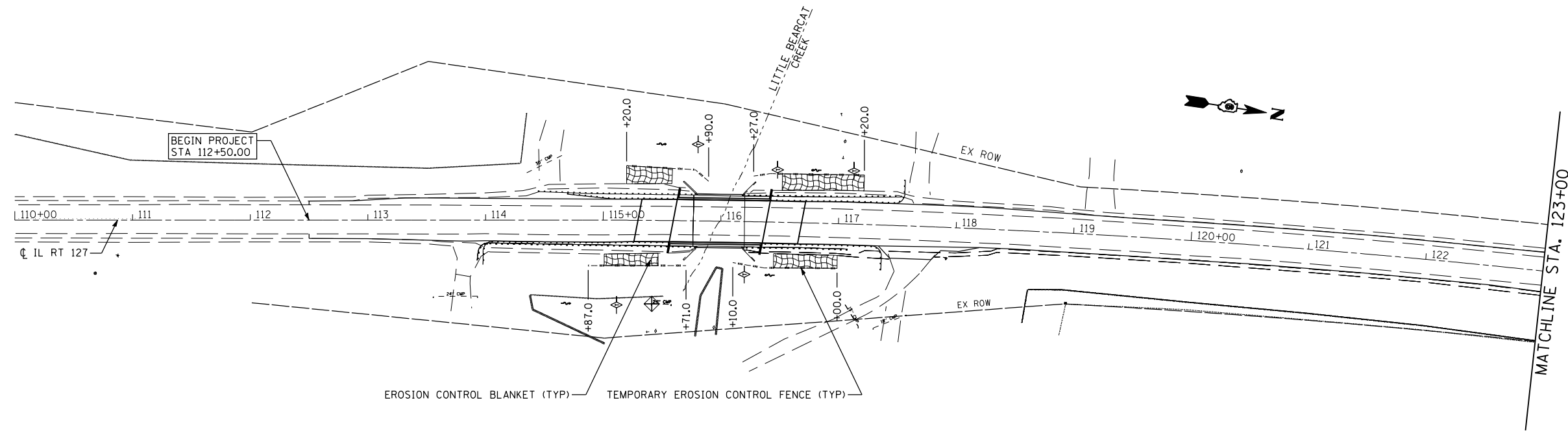


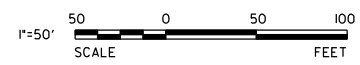
F.A.P. RTE.	SECTION	COUNTY	TOTAL SHEETS	SHEET NO.
42	106(B-1,B-2)	MONTGOMERY	61	18
STA. 112+50.00		TO STA. 130+70.00		
FED. ROAD DIST. NO.	ILLINOIS	FED. AID PROJECT		



LEGEND

- - - - - TEMPORARY EROSION CONTROL FENCE
- ⊕ TEMPORARY DITCH CHECK
- ⊕ TEMPORARY INLET PROTECTION
- DIRECTION OF DITCH FLOW
- [Hatched Box] EROSION CONTROL BLANKET

NOTE:
EROSION CONTROL BLANKET TO BE USED ON SLOPES GREATER THAN 3:1 (H:V) OR AS DIRECTED BY THE ENGINEER.



K+ K-Plus Engineering, Ltd.
753 WINDSOR ROAD
CHARLESTON, IL 61920
(217) 348-1500
WWW.K-PLUSENGINEERING.LTD.COM
ILLINOIS DEPARTMENT OF PROFESSIONAL REGULATION REGISTRATION #184-003685

** THIS DOCUMENT IS THE PROPERTY OF K-PLUS ENGINEERING, LTD. AND NO PART HEREIN SHALL BE USED **
EXCEPT FOR THIS SPECIFIC PROJECT WITHOUT THE WRITTEN CONSENT OF K-PLUS ENGINEERING, LTD.

REVISIONS	
NAME	DATE

ILLINOIS DEPARTMENT OF TRANSPORTATION
STORM WATER POLLUTION PREVENTION PLAN

FAP 42 (IL RTE, 127)
SECTION 106 (B-1, B-2)
MONTGOMERY COUNTY

SCALE: VERT. 8-07-07
HORIZ. 8-07-07

DRAWN BY ADG
CHECKED BY DC

PLOT DATE : Aug-16-2007 02:56:35PM
 FILE NAME : c:\projects\4655598\kpluseing-fma\18-swp-1.dwg
 PLOT SCALE : 1/8"=1'-0" / IN.
 USER NAME : laughlin-1