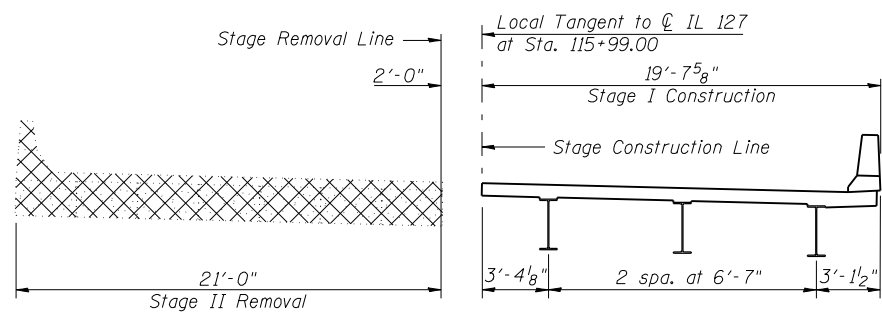
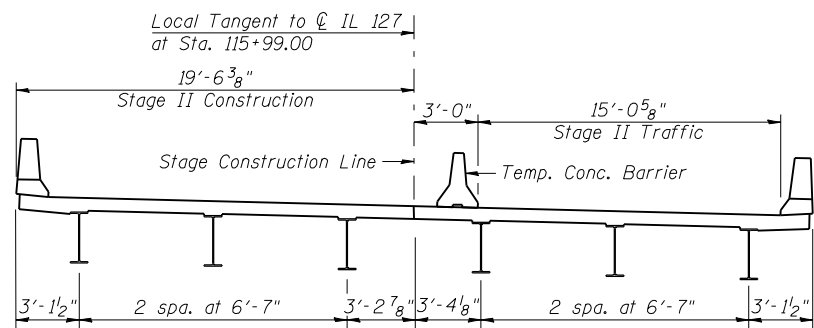


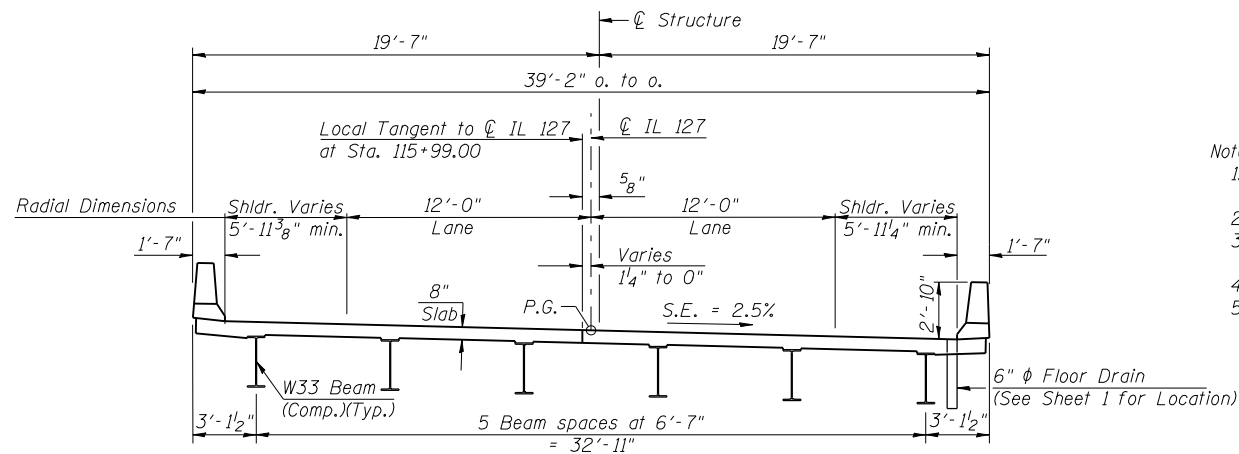
**STAGE I REMOVAL & TRAFFIC**  
(Looking North)



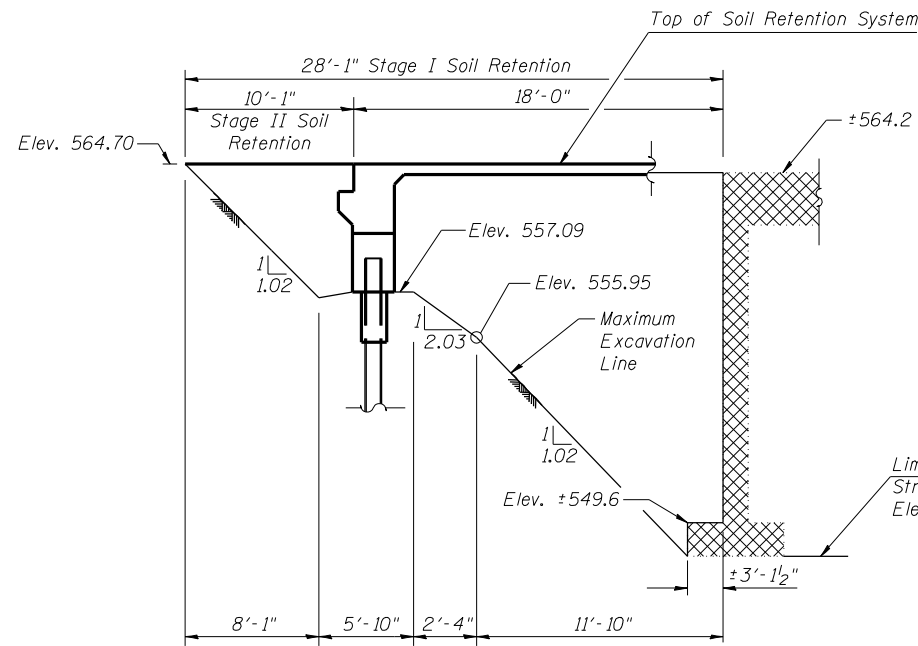
**STAGE I CONSTRUCTION & STAGE II REMOVAL**  
(Looking North)



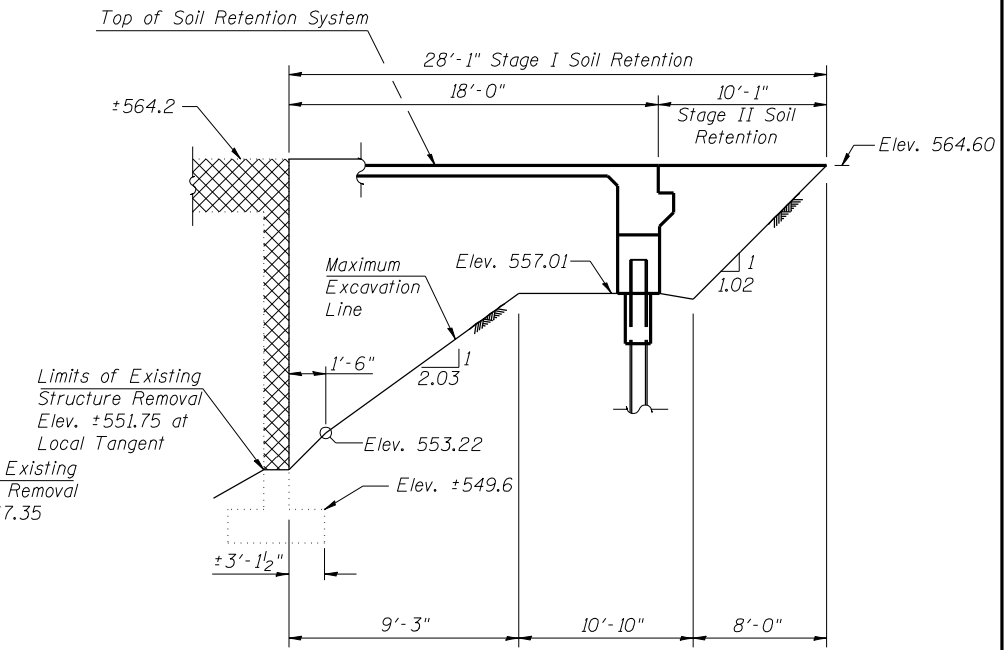
**STAGE II CONSTRUCTION & TRAFFIC**  
(Looking North)



**PROPOSED CROSS SECTION**  
(Looking North)



**TEMPORARY SOIL RETENTION SYSTEM AT SOUTH ABUT.**



**TEMPORARY SOIL RETENTION SYSTEM AT NORTH ABUT.**

Note:  
A cantilevered sheet piling design does not appear feasible and additional members or other retention systems may be necessary. The Contractor shall submit a temporary soil retention system design including plan details and calculations for review and acceptance by the Engineer.

- Notes:
- All horizontal dimensions are measured perpendicular to Local Tangent at Sta. 115+99.00, unless noted otherwise.
  - Cross Hatched areas indicate removal of existing structure.
  - Location of Stage Removal & Construction lines is also applicable to existing abutments.
  - See roadway plans for quantity of Temporary Concrete Barrier.
  - See sheet 12 of 15 for details of Temporary Concrete Barrier.

**Lin Engineering, Ltd.**  
Consulting Engineers  
Chatham, Illinois

Designed By: RKM  
Checked By: MTH  
Date: 04/07

Drawn By: AUF  
File: 068-0507.DGN

REVISIONS	
NAME	DATE

ILLINOIS DEPARTMENT OF TRANSPORTATION  
**STAGE CONSTRUCTION DETAILS**  
ILLINOIS ROUTE 127 OVER  
LITTLE BEARCAT CREEK  
F.A.P. ROUTE 42 - SECTION 106 (B-2)  
MONTGOMERY COUNTY  
STATION 115+99.00  
STRUCTURE NO. 068-0507