

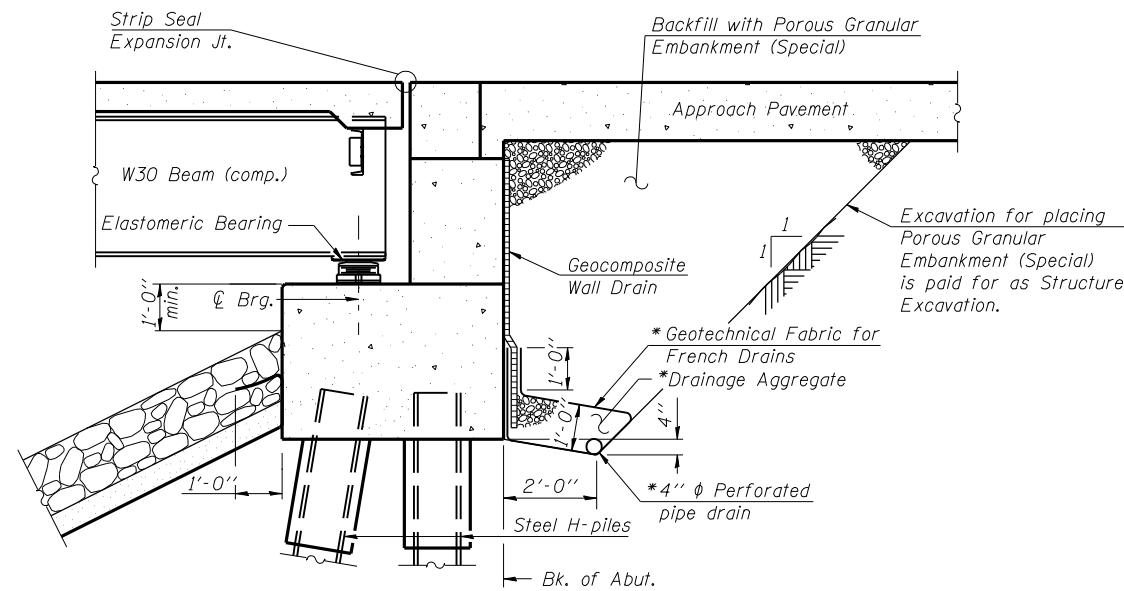
ROUTE NO.	SECTION	COUNTY	TOTAL SHEETS	SHEET NO.
FAP 42 (IL 127)	106 (B-1)	Montgomery	61	35
FED. ROAD DIST. NO. 7		ILLINOIS	FED. AID PROJECT	

SHEET NO. 2
20 SHEETS

Contract #72150

GENERAL NOTES

- Fasteners shall be AASHTO M164 Type 1, mechanically galvanized bolts in painted areas and M164 Type 3 in unpainted areas. Bolts 7/8 in. ϕ , holes 15/16 in. ϕ , unless otherwise noted.
- Calculated weight of Structural Steel = 179,670 lbs. (AASHTO M270, Grade 50W)
- All structural steel shall be AASHTO M 270 Grade 50W except expansion joints which shall be AASHTO M 270 Grade 36.
- No field welding is permitted except as specified in the contract documents.
- Reinforcement bars shall conform to the requirements of ASTM A 706 Gr 60 (IL Modified). See Special Provisions
- Reinforcement bars designated (E) shall be epoxy coated.
- Bearing seat surfaces shall be constructed or adjusted to their designated elevations within a tolerance of 1/8 inch (0.01 ft.). Adjustment shall be made either by grinding the surface or by shimming the bearings.
- Concrete Sealer shall be applied to all exposed surface areas of the Abutments.
- Structural steel shall only be painted for a distance of 8 ft. from the deck joints. All structural steel shall be cleaned as specified in the Special Provision for "Surface Preparation and Painting Requirements for Weathering Steel".
- All exposed structural steel of the Elastomeric bearings shall be cleaned and shop painted as specified in the Special Provision for "Surface Preparation and Painting Requirements for Weathering Steel".
- Layout of slope protection system may be varied in the field to suit ground conditions as directed by the Engineer.
- The Contractor shall drive test piles to 110% of the nominal required bearing specified in production locations at substructures specified or approved by the Engineer before ordering the remainder of piles.
- The Contractor is advised that the existing PPC Deck Beams are in a deteriorated condition with reduced load carrying capacity. It is the Contractor's responsibility to account for the condition of the beams when developing construction procedures for removal and replacement of the superstructure.



**SECTION THRU PILE SUPPORTED
STUB ABUTMENT**
(Horiz. dim. @ Rt. L's)

Note:

All drainage system components shall extend parallel to the abutment back wall until they intersect the wingwalls or 2'-0" from the end of the wingwalls when the wings are parallel to the abutment. The pipe shall extend under the wingwall, if necessary, until intersecting the side slopes. The pipes shall drain into concrete headwalls. (See Article 601.05 of the Standard Specifications and Highway Standard 60110).

TOTAL BILL OF MATERIAL

ITEM	UNIT	SUPER	SUB	TOTAL
Porous Granular Embankment (Special)	Cu. Yd.	-	163	163
Stone Riprap Class A4	Sq. Yd.	-	345	345
Stone Dumped Riprap Class A4	Sq. Yd.	-	407	407
Filter Fabric	Sq. Yd.	-	751	751
Removal of Existing Structures #1	Each	-	1	1
Structure Excavation	Cu. Yd.	-	578	578
Floor Drains	Each	14	-	14
Concrete Structures	Cu. Yd.	-	239.1	239.1
Concrete Superstructure	Cu. Yd.	264.6	-	264.6
**Bridge Deck Grooving	Sq. Yd.	984	-	984
Concrete Encasement	Cu. Yd.	-	17.5	17.5
**Protective Coat	Sq. Yd.	1233	-	1233
Furnishing and Erecting Structural Steel	Lump Sum	0.7	-	0.7
Stud Shear Connectors	Each	3546	-	3546
Reinforcement Bars, Epoxy coated	Pound	57300	20300	77600
Bar Splicers	Each	618	84	702
Furnishing Steel Piles HPI0x42	Foot	-	1414	1414
Furnishing Steel Piles HPI2x53	Foot	-	1224	1224
Driving Piles	Foot	-	2638	2638
Test Pile Steel HPI0x42	Each	-	2	2
Test Pile Steel HPI2x53	Each	-	2	2
Temporary Sheet Piling	Sq. Ft.	-	2614	2614
Name Plates	Each	1	-	1
Preformed Joint Strip Seal	Foot	134	-	134
Elastomeric Bearing Assembly Type II	Each	-	12	12
Anchor Bolts, 1"	Each	-	48	48
Concrete Sealer	Sq. Ft.	-	828	828
Geocomposite Wall Drain	Sq. Yd.	-	111	111
Pipe Underdrains for Structures 4"	Foot	-	142	142
Underwater Structure Excavation Protection - Location 1	Each	-	1	1
Underwater Structure Excavation Protection - Location 2	Each	-	1	1
Asbestos Bearing Pad Removal	Each	90	-	90

** Quantity Includes Approach Pavement

STATION 126+58.45
BUILT BY
STATE OF ILLINOIS
F.A.P. RT. 42 SEC. 106(B-1)
LOADING HS20
STR. NO. 068-0506

NAME PLATE
See Std. 515001

ILLINOIS DEPARTMENT OF TRANSPORTATION
GENERAL NOTES & DETAILS
ILLINOIS ROUTE 127 OVER
BEARCAT CREEK
F.A.P. ROUTE 42 - SECTION 106 (B-1)
MONTGOMERY COUNTY
STA. 126+58.45
STRUCTURE NO. 068-0506

REVISIONS

NAME	DATE

Lin Engineering, Ltd.
Consulting Engineers
Chatham, Illinois

Designed By: RKM Checked By: MTH Drawn By: AJP
Date: 04/2007 File: 068-0506.DGN

\$FILEABBREV\$

Sep-13-2007 09:06:16AM:06:16 AM