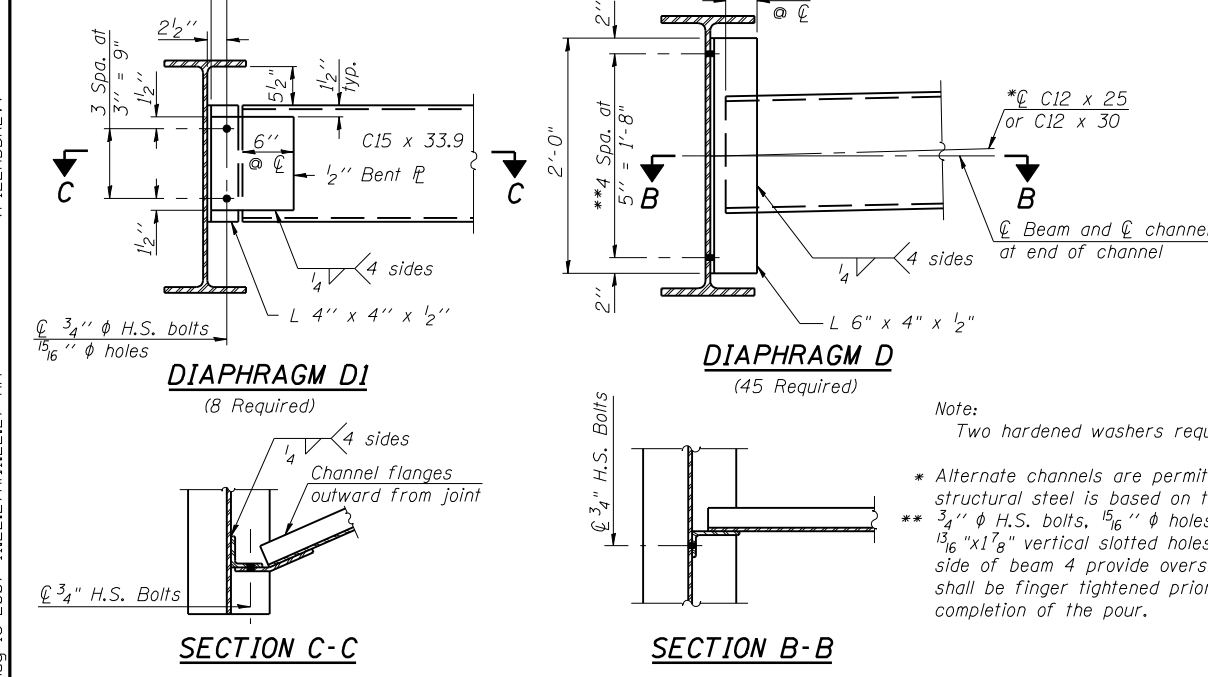
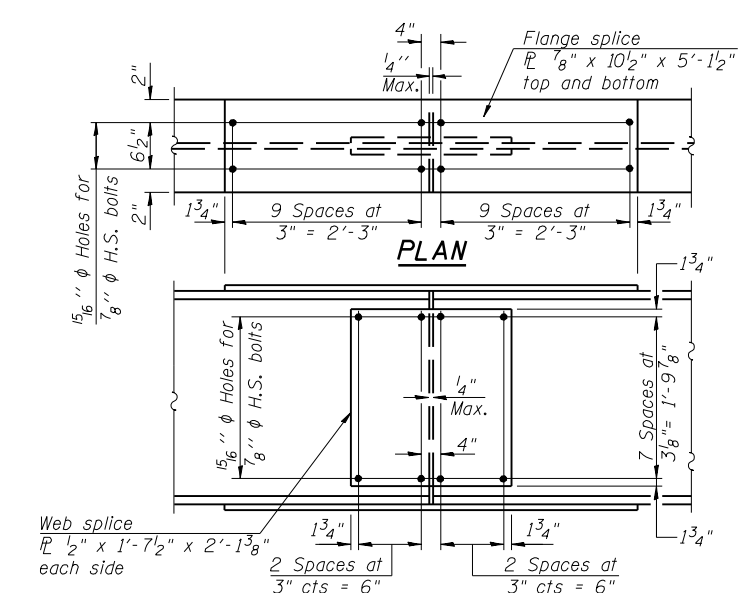
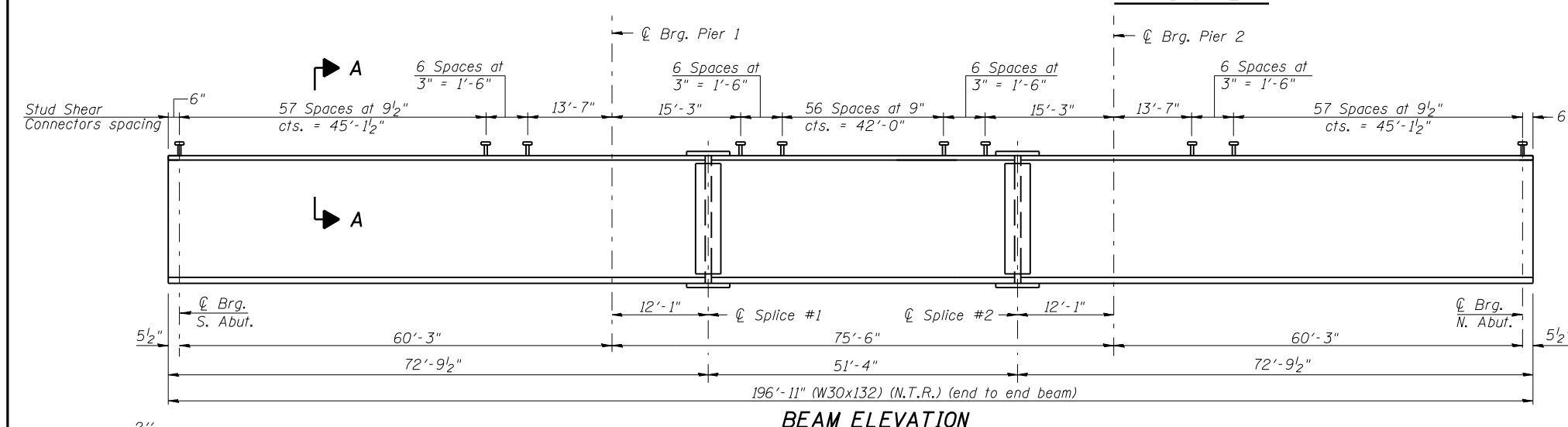
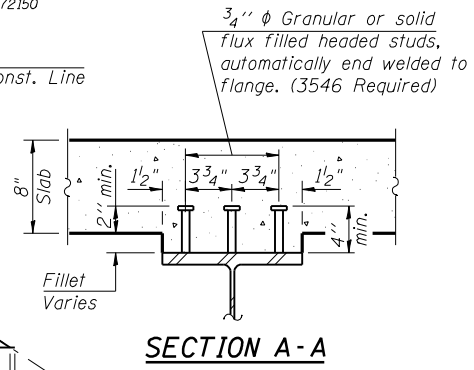
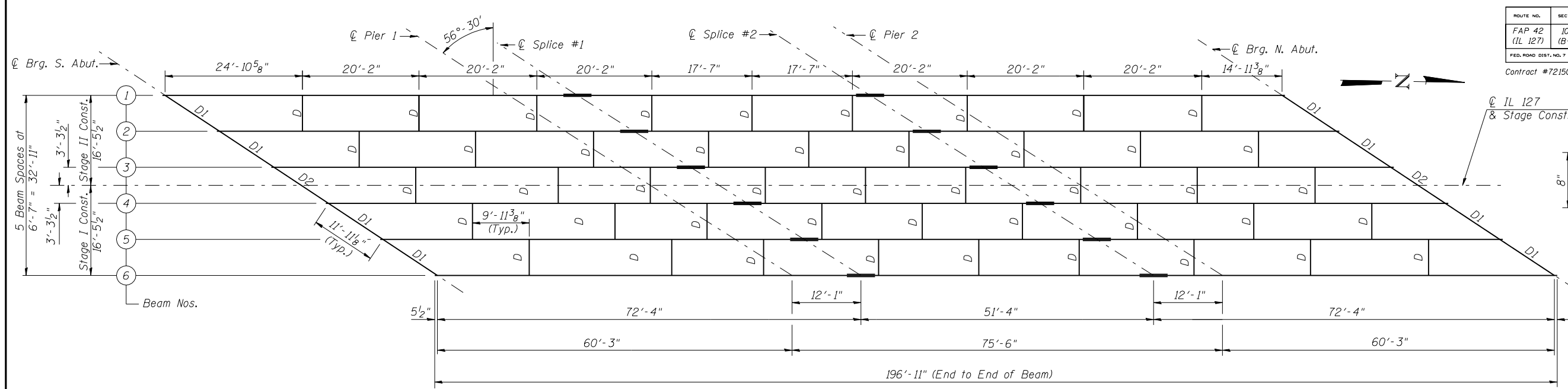


Contract #72150



- NOTES:**
1. Load carrying components designated "NTR" shall conform to the Supplemental Requirements for Notch Toughness, Zone 2.
 2. All splice plates shall be AASHTO M270 Grade 50W (N.T.R.).
 3. All diaphragms between beams shall be installed as steel is erected with erection pins and bolts in accordance with the erection plan approved by the Engineer. Individual diaphragms at supports may be temporarily disconnected to install bearing anchor rods.
 4. See sheet 3 of 20 for details of End Diaphragm D2.

Note:
Two hardened washers required for each set of oversized holes.

* Alternate channels are permitted to facilitate material acquisition. Calculated weight of structural steel is based on the lighter section.

** 3/4" ϕ H.S. bolts, 1⁵/₁₆" ϕ holes. For diaphragms at stage construction provide 1³/₁₆" x 1⁷/₈" vertical slotted holes at east side of beam 3 in angle and for west side of beam 4 provide oversize holes in angle and beam. Bolts in slotted holes shall be finger tightened prior to the deck slab pouring and then fully tightened after completion of the pour.

Location	Beam 1	Beam 2	Beam 3	Beam 4	Beam 5	Beam 6
⊕ Brg. S. Abut.	563.52	563.64	563.74	563.73	563.63	563.50
⊕ Brg. Pier 1	563.45	563.57	563.67	563.67	563.56	563.43
⊕ Splice #1	563.44	563.56	563.66	563.65	563.55	563.42
⊕ Splice #2	563.42	563.54	563.64	563.63	563.53	563.40
⊕ Brg. Pier 2	563.42	563.54	563.64	563.64	563.53	563.40
⊕ Brg. N. Abut.	563.44	563.56	563.66	563.66	563.55	563.42

ILLINOIS DEPARTMENT OF TRANSPORTATION
FRAMING PLAN & STEEL DETAILS
ILLINOIS ROUTE 127 OVER BEARCAT CREEK
F.A.P. ROUTE 42 - SECTION 106 (B-1)
MONTGOMERY COUNTY
STA. 126+58.45
STRUCTURE NO. 068-0506

REVISIONS	
NAME	DATE

Lin Engineering, Ltd.
Consulting Engineers
Chatham, Illinois

Designed By: RKM
Date: 04/2007

Checked By: MTH
File: 068-0506.DGN

Drawn By: AUF

Aug-16-2007 11:22:27AM:1:22:27 AM \$FILEABBREV\$