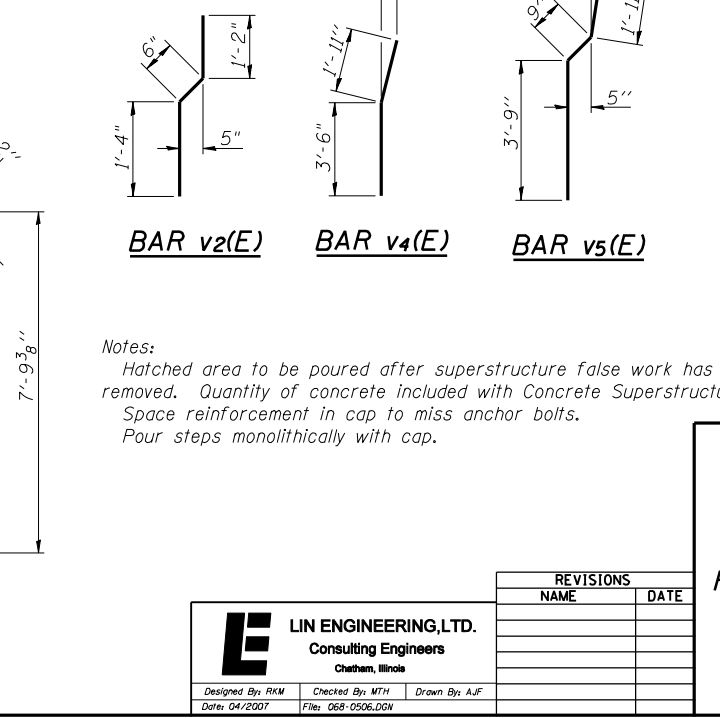
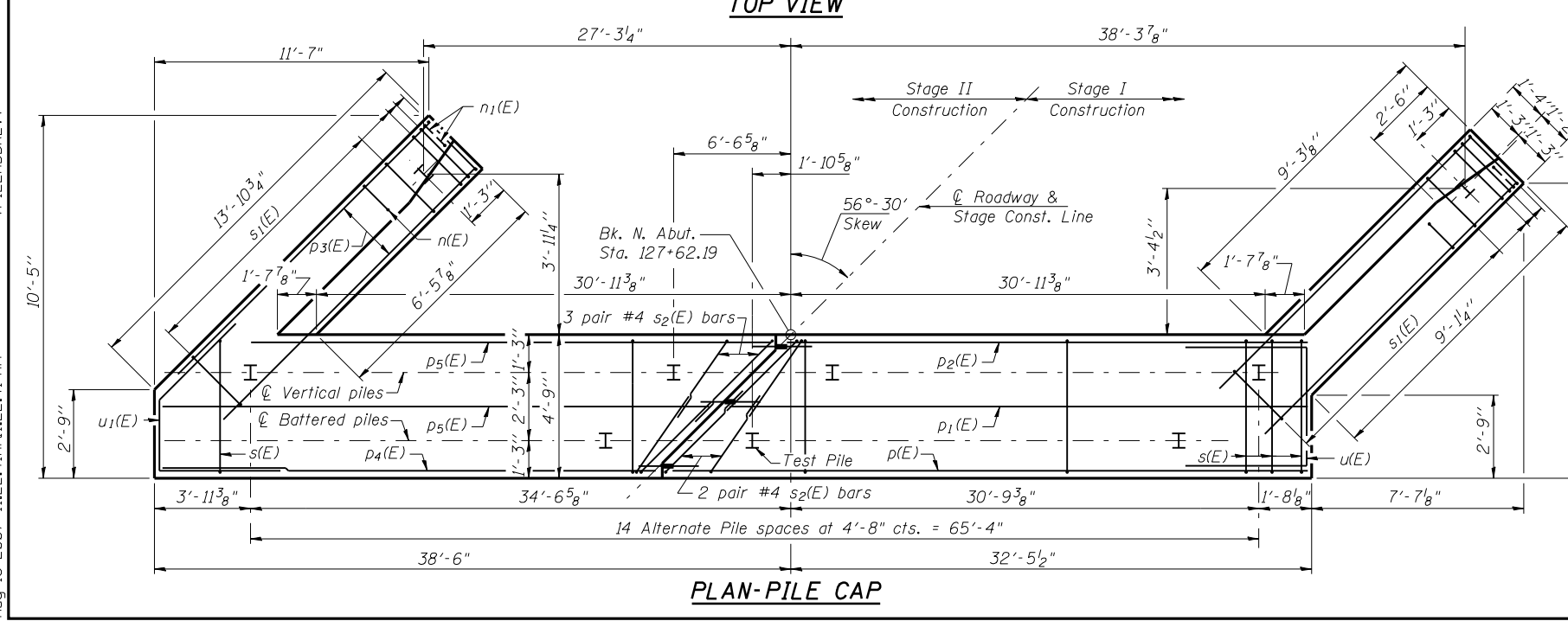
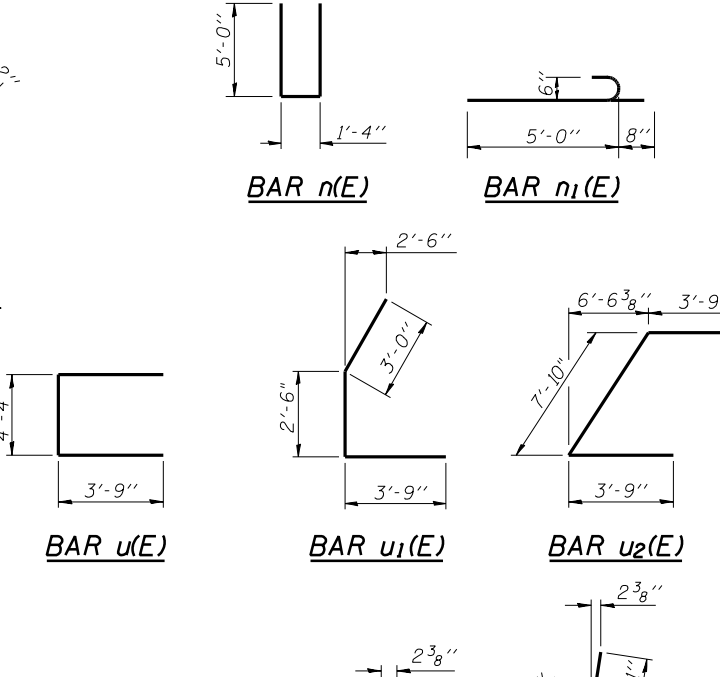
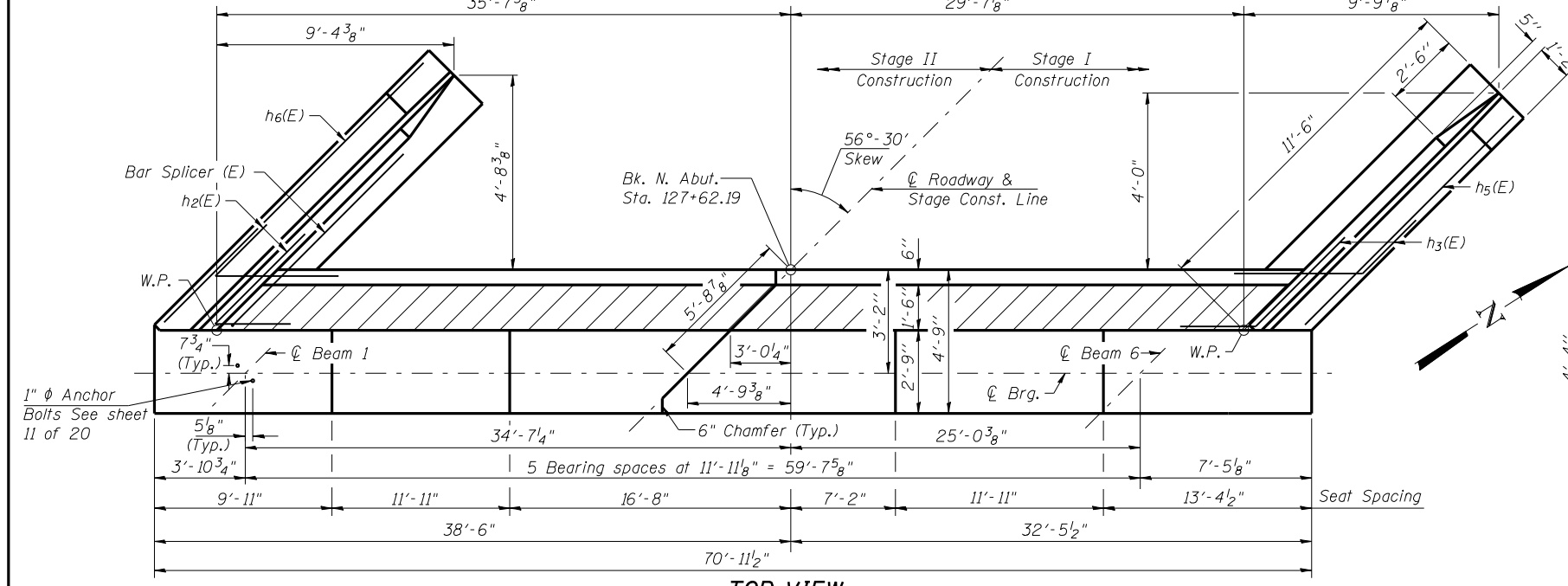


**NORTH ABUTMENT  
BILL OF MATERIAL**

Bar	No.	Size	Length	Shape
h(E)	14	#5	32'-3"	—
h1(E)	8	#6	32'-3"	—
h2(E)	8	#5	5'-0"	↙
h3(E)	8	#5	5'-0"	↘
h4(E)	14	#4	11'-2"	—
h5(E)	11	#4	8'-9"	—
h6(E)	11	#4	13'-6"	—
n(E)	18	#6	11'-4"	—
n1(E)	12	#6	5'-8"	—
p(E)	3	#7	38'-3"	—
p1(E)	2	#7	35'-7"	—
p2(E)	3	#7	32'-10"	—
p3(E)	12	#7	13'-0"	—
p4(E)	3	#7	31'-8"	—
p5(E)	5	#7	34'-0"	—
s(E)	80	#4	15'-11"	—
s1(E)	30	#4	9'-5"	—
s2(E)	10	#4	12'-6"	—
u(E)	4	#6	11'-10"	—
u1(E)	4	#6	9'-3"	↙
u2(E)	4	#6	15'-4"	↘
v(E)	66	#5	4'-7"	—
v1(E)	66	#5	5'-9"	—
v2(E)	66	#4	3'-0"	—
v3(E)	66	#5	3'-4"	—
v4(E)	6	#6	5'-5"	—
v5(E)	18	#6	6'-5"	—
v6(E)	24	#6	6'-3"	—
Structure Excavation		Cu. Yd.	240	
Concrete Structures		Cu. Yd.	64.8	
Reinforcement Bars, Epoxy Coated		Pound	5700	
Furnishing Steel Piles, HP 10x42		Foot	672	
Driving Piles		Foot	672	
Test Pile Steel, HP 10x42		Each	1	
Concrete Encasement		Cu. Yd.	5.2	
Concrete Sealer		Sq. Ft.	414	



For details of Bar Splicers, see sheet 17 of 20.  
For details of piles and Concrete Encasement, see sheet 18 of 20.  
For drainage details see sheet 2 of 20.

**PILE DATA**

Type: Steel HP10x42  
Nominal Required Bearing: 213 kips  
Allowable Resistance Available: 71 kips  
Est. Length: 48 Ft.  
No. Production Piles: 14  
No. Test Piles: 1

Notes:  
Hatched area to be poured after superstructure false work has been removed. Quantity of concrete included with Concrete Superstructure.  
Space reinforcement in cap to miss anchor bolts.  
Pour steps monolithically with cap.

ILLINOIS DEPARTMENT OF TRANSPORTATION  
**NORTH ABUTMENT**  
ILLINOIS ROUTE 127 OVER  
BEARCAT CREEK  
F.A.P. ROUTE 42 - SECTION 106 (B-1)  
MONTGOMERY COUNTY  
STA. 126+58.45  
STRUCTURE NO. 068-0506

**REVISIONS**

NAME	DATE

**DESIGNED BY:** RKM  
**DATE:** 04/2007  
**CHECKED BY:** MTH  
**FILE:** 068-0506.DGN  
**DRAWN BY:** AUF

Aug-16-2007 11:22:41AM 11:22:41 AM \$FILEABBREV\$