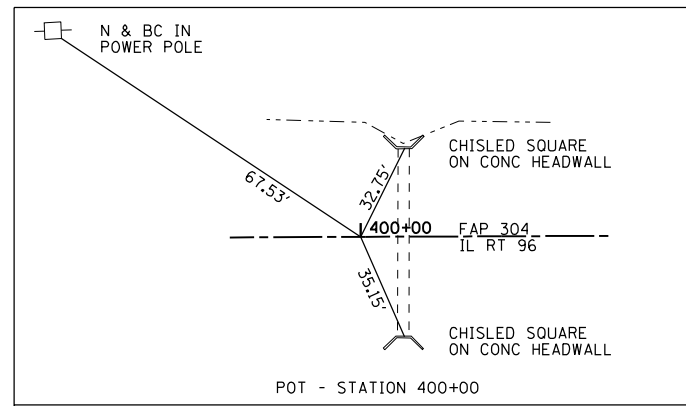
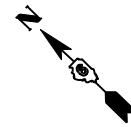
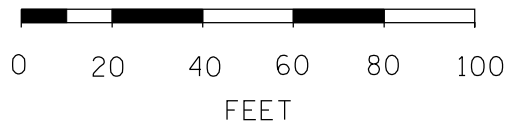


F.A.P. RTE.	SECTION	COUNTY	TOTAL SHEETS	SHEET NO.
304	2(B-5,B-6)	PIKE	112	24
STA.		TO STA.		
FED. ROAD DIST. NO.		ILLINOIS FED. AID PROJECT		

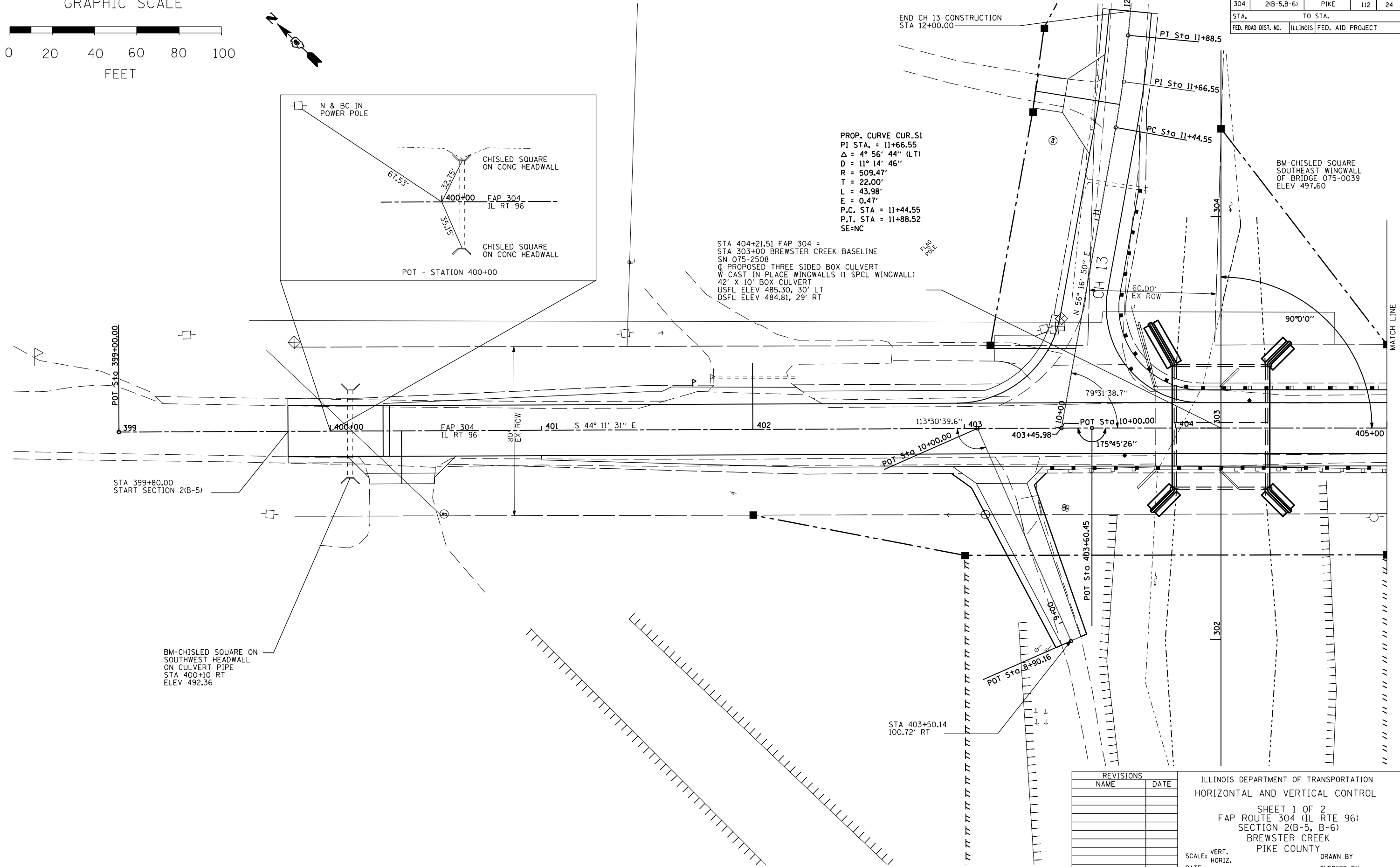
GRAPHIC SCALE



PROP. CURVE CUR.S1
 PI STA. = 11+66.55
 $\Delta = 4^\circ 56' 44''$ (LT)
 $D = 11^\circ 14' 46''$
 $R = 509.47'$
 $T = 22.00'$
 $L = 43.98'$
 $E = 0.47'$
 P.C. STA = 11+44.55
 P.T. STA = 11+88.52
 SE=NC

STA 404+21.51 FAP 304 =
 STA 303+00 BREWSTER CREEK BASELINE
 SN 075-2508
 (PROPOSED THREE SIDED BOX CULVERT
 W CAST IN PLACE WINGWALLS (1 SPCL WINGWALL)
 42' X 10' BOX CULVERT
 USFL ELEV 485.30, 30' LT
 DSFL ELEV 484.81, 29' RT

BM-CHISLED SQUARE
 SOUTHEAST WINGWALL
 OF BRIDGE 075-0039
 ELEV 497.60



REVISIONS	
NAME	DATE

ILLINOIS DEPARTMENT OF TRANSPORTATION
 HORIZONTAL AND VERTICAL CONTROL
 SHEET 1 OF 2
 FAP ROUTE 304 (IL RTE 96)
 SECTION 2(B-5, B-6)
 BREWSTER CREEK
 PIKE COUNTY
 SCALE: VERT. DATE HORIZ. DATE
 DRAWN BY CHECKED BY