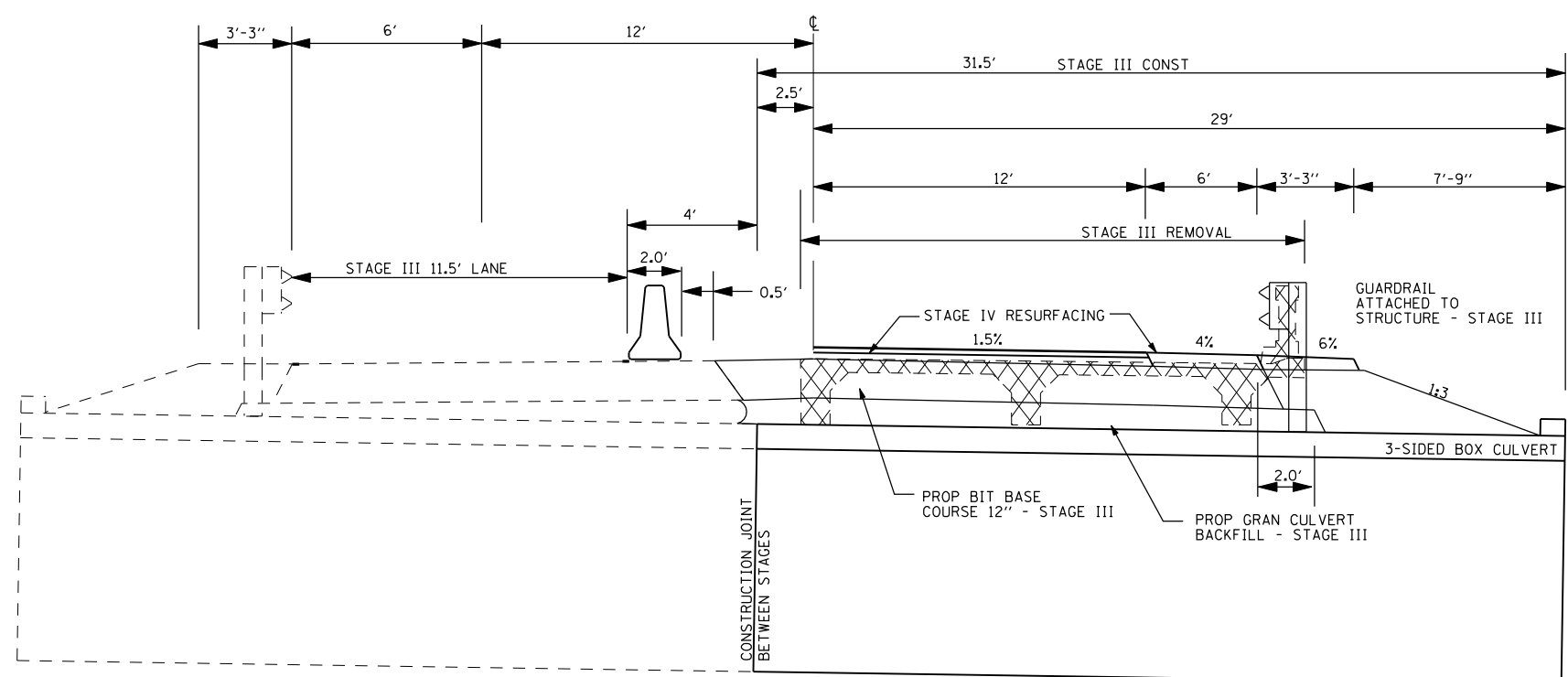
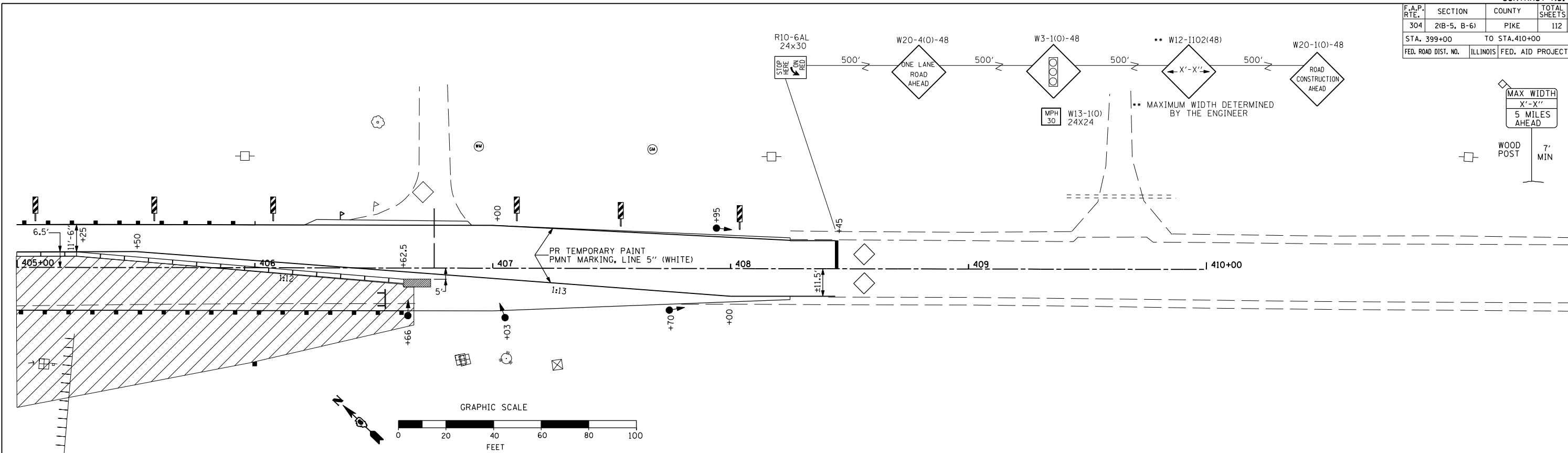


F.A.P. RTE.	SECTION	COUNTY	TOTAL SHEETS	SHEET NO.
304	2(B-5, B-6)	PIKE	112	30
STA. 399+00		TO STA. 410+00		
FED. ROAD DIST. NO.	ILLINOIS	FED. AID PROJECT		



LEGEND

	WORK AREA		DRUMS WITH STEADY BURNING LIGHTS
	INDUCTION LOOP DETECTOR		TEMPORARY TRAFFIC SIGNAL
	DOUBLE VERTICAL PANEL		TEMPORARY CONCRETE BARRIER
	IMPACT ATTENUATOR		TYPE III BARRICADE
	24" STOP BAR		

STAGE III ON THIS PROJECT CAN NOT START UNTIL STAGE II IS COMPLETE ON BROWN CREEK, SECTION 2(B-6).

TRAFFIC TO RUN ON EXISTING PAVEMENT AND BITUMINOUS BASE COURSE WIDENING DURING STAGE III. THE FINAL SURFACE, LEVELING BINDER AND AGGREGATE SHOULDERS TO BE INSTALLED DURING STAGE IV OF THIS PROJECT.

REMOVE TRAFFIC CONTROL AND PROTECTION STAGE III STANDARD 701321 (SPECIAL) PRIOR TO STAGE IV.

THIS WORK WILL BE PAID FOR AT THE CONTRACT UNIT PRICE BID PER LUMP SUM FOR TRAFFIC CONTROL AND PROTECTION, STANDARD 701321 (SPECIAL)

THE FINAL SURFACE, LEVELING BINDER, BINDER COURSE AND AGGREGATE SHOULDERS TO BE INSTALLED DURING STAGE IV OF THIS PROJECT.

STAGE III STA 405+00.00 TO STA 408+70.00

REVISIONS	
NAME	DATE

ILLINOIS DEPARTMENT OF TRANSPORTATION

STAGE CONSTRUCTION FAP 304 (IL96) OVER BREWSTER CREEK

SCALE: VERT. _____
HORIZ. _____

DRAWN BY _____
CHECKED BY _____

PLOT DATE = 7/31/2007
 FILE NAME = c:\p\projects\652484\pabo_f.mol\75-8039\stageconstruction\brnster.dgn
 PLOT SCALE = 42,352% / IN.
 USER NAME = laughlin-1