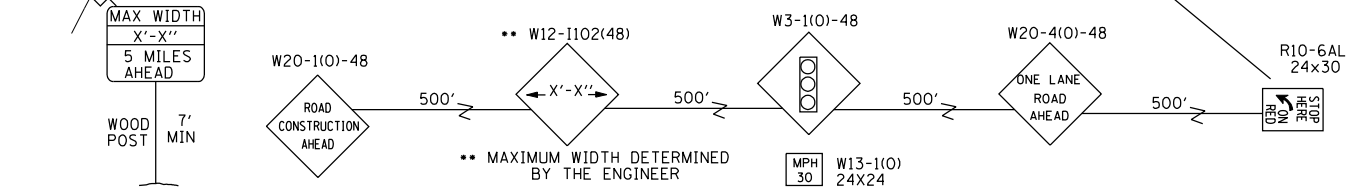
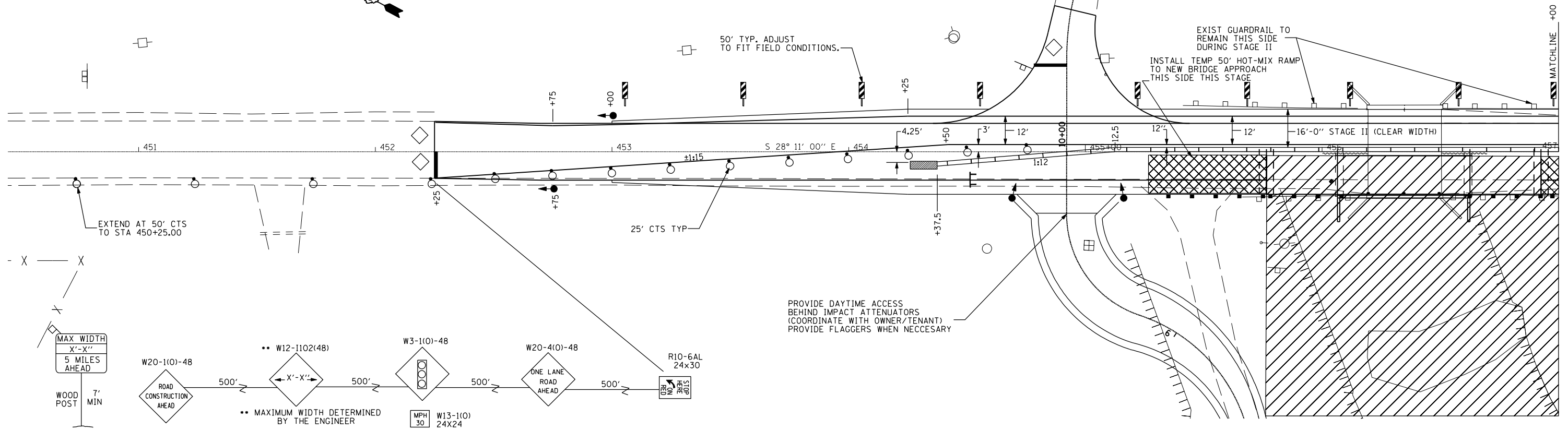
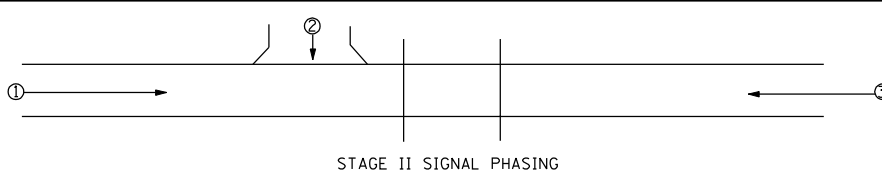
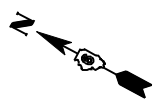
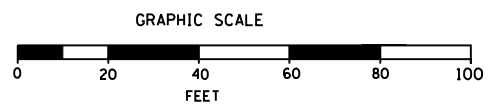
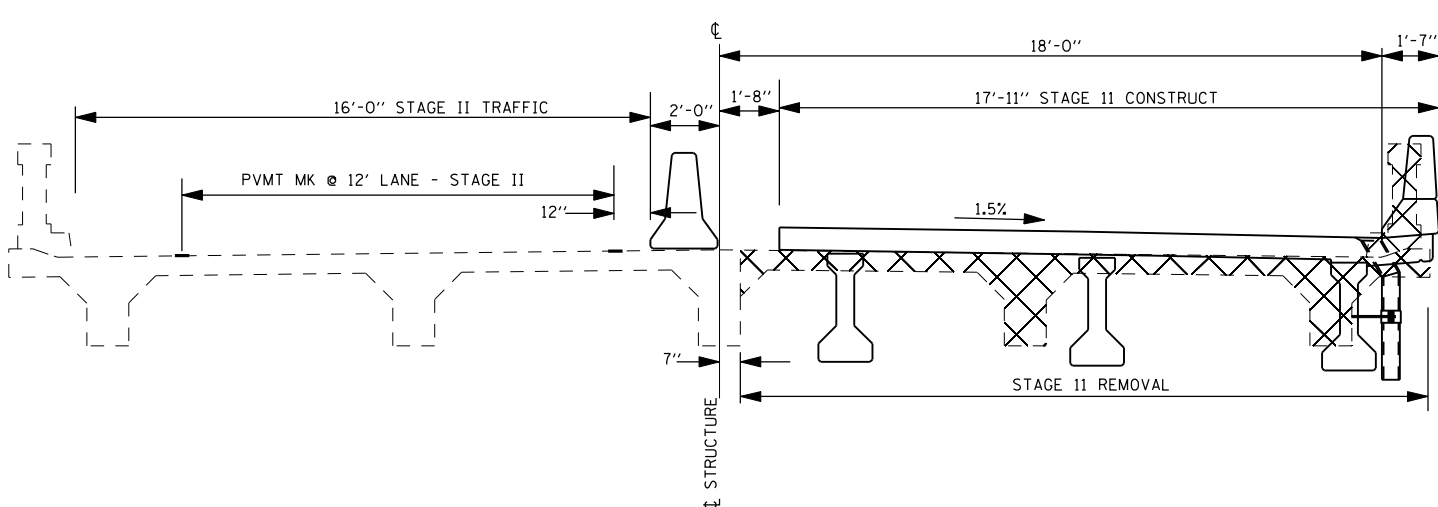


F.A.P. RTE.	SECTION	COUNTY	TOTAL SHEETS	SHEET NO.
304	2(B-5, B-6)	PIKE	112	31
STA. 399+00		TO STA. 410+00		
FED. ROAD DIST. NO.		ILLINOIS	FED. AID PROJECT	



LEGEND

	WORK AREA		DRUMS WITH STEADY BURNING LIGHTS
	INDUCTION LOOP DETECTOR		TEMPORARY TRAFFIC SIGNAL
	DOUBLE VERTICAL PANEL		TEMPORARY CONCRETE BARRIER
	IMPACT ATTENUATOR		TYPE III BARRICADE
	24" STOP BAR		TEMP BIT RAMP



STAGE I WILL CONSIST OF REMOVING THE EXISTING BITUMINOUS SHOULDERS FROM STA 453+00.00 TO STA 456+19+00.00 LT AND RT AND FROM STA 456+51.00 LT TO STA 461+00.00 LT AND FROM STA 456+51.00 RT TO STA 460+45.00 RT AND INSTALLING THE HOT-MIX ASPHALT BASE COURSE AND BASE COURSE WIDENING ON BOTH SIDES OF THE ROADWAY AND DONE AS PER STANDARD 701201 AND STANDARD 701326 AS APPLICABLE. THE WIDENING, TOWNSHIP ROAD RADIUS IMPROVEMENTS AND FE RELOCATION TO BE COMPLETED PRIOR TO STAGE II. COORDINATE WORK ON STAGE I HERE WITH STAGE I AT BREWSTER CREEK TO INSURE THAT EITHER CH 13 AT BREWSTER CREEK OR TR 96 AT BROWN CREEK IS OPEN TO RESIDENTS AT ALL TIMES.

TRAFFIC TO RUN ON EXISTING PAVEMENT AND HOT-MIX ASPHALT BASE COURSE WIDENING ON FAP 304 THIS STAGE. THE FINAL SURFACE, LEVELING BINDER, BINDER COURSE AND AGGREGATE SHOULDERS TO BE INSTALLED DURING STAGE IV OF THIS PROJECT.

PROVIDE TEMPORARY ASPHALT RAMP TO NEW BRIDGE APPROACH PAVEMENT RIGHT SIDE THIS STAGE.

STAGE II STA 452+25.00 TO STA 457+00.00

REVISIONS	
NAME	DATE

ILLINOIS DEPARTMENT OF TRANSPORTATION

STAGE CONSTRUCTION FAP 304 (IL96) OVER BROWN CREEK

SCALE: VERT. _____
HORIZ. _____

DRAWN BY _____
CHECKED BY _____

PLOT DATE = 7/31/2007
 FILE NAME = c:\p\projects\652484\paba_r\mol\m075-8048\stageconstruction\om.dgn
 PLOT SCALE = 42.3525 / IN.
 USER NAME = laughlin-1