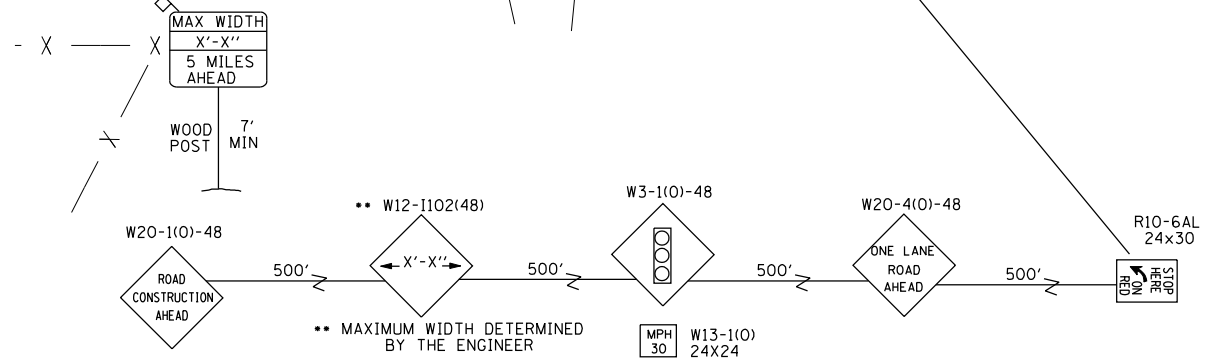
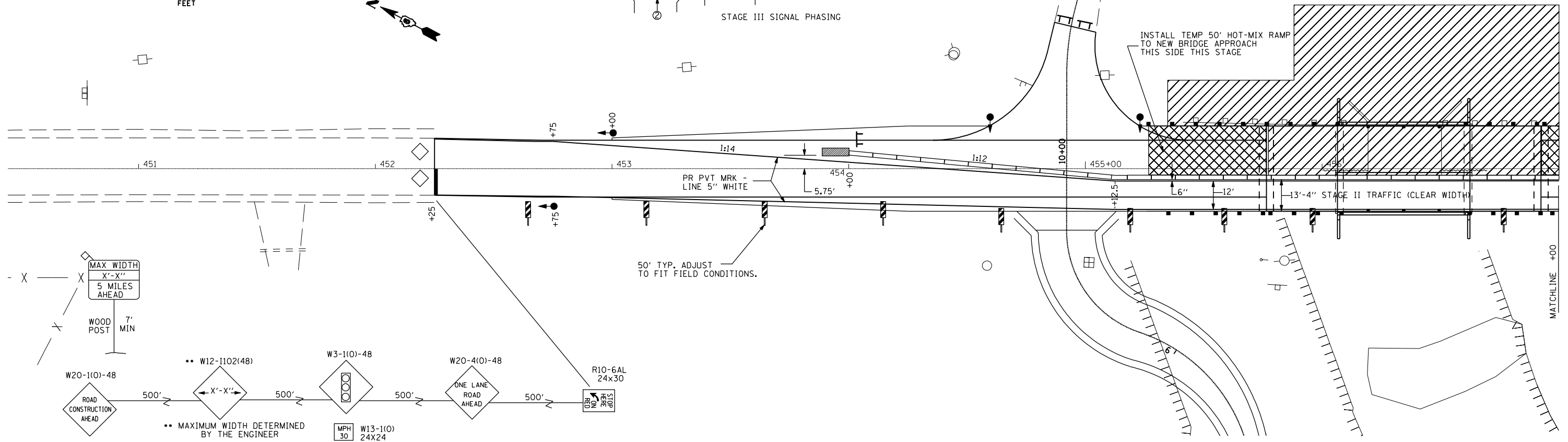
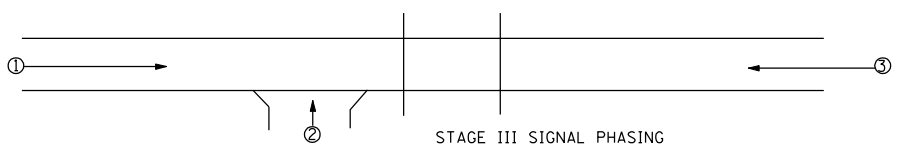
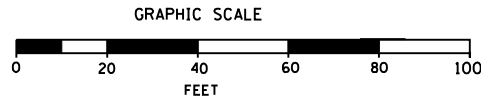
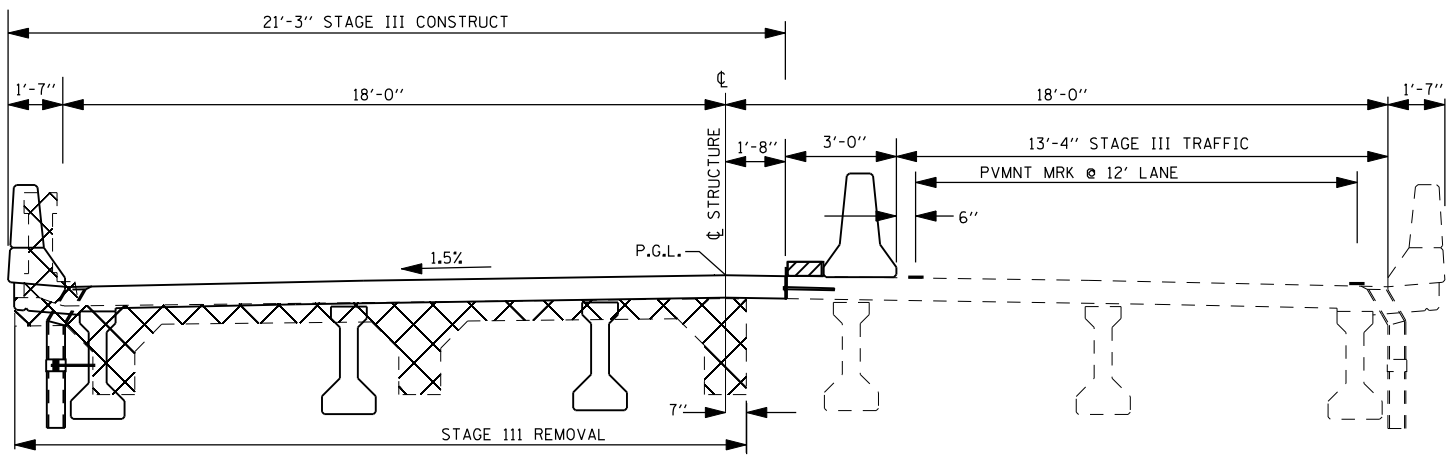


F.A.P. RTE.	SECTION	COUNTY	TOTAL SHEETS	SHEET NO.
304	2(B-5, B-6)	PIKE	112	33
STA. 399+00		TO STA. 410+00		
FED. ROAD DIST. NO.		ILLINOIS FED. AID PROJECT		



LEGEND

	WORK AREA		DRUMS WITH STEADY BURNING LIGHTS
	INDUCTION LOOP DETECTOR		TEMPORARY TRAFFIC SIGNAL
	DOUBLE VERTICAL PANEL		TEMPORARY CONCRETE BARRIER
	IMPACT ATTENUATOR		TYPE III BARRICADE
	24" STOP BAR		



STAGE III ON THIS PROJECT CAN NOT START UNTIL STAGE II IS COMPLETE ON BREWSTER CREEK, SECTION 2(B-5)

TRAFFIC TO RUN ON EXISTING PAVEMENT AND HOT-MIX ASPALT BASE COURSE WIDENING ON FAP 304 THIS STAGE. THE FINAL SURFACE, LEVELING BINDER, BINDER COURSE AND AGGREGATE SHOULDERS TO BE INSTALLED DURING STAGE IV OF THIS PROJECT.

PROVIDE TEMPORARY ASPHALT RAMP TO NEW BRIDGE APPROACH PAVEMENT LEFT SIDE THIS STAGE.

REMOVE TRAFFIC CONTROL AND PROTECTION STANDARD 701321 (SPECIAL) (EXCEPT 50' TEMP BIT RAMP) PRIOR TO STAGE IV.

STAGE III
STA 452+25.00 TO STA 457+00.00

THIS WORK WILL BE PAID FOR AT THE CONTRACT UNIT PRICE BID PER LUMP SUM FOR TRAFFIC CONTROL AND PROTECTION, STANDARD 701321 (SPECIAL)

REVISIONS	
NAME	DATE

ILLINOIS DEPARTMENT OF TRANSPORTATION

STAGE CONSTRUCTION
FAP 304 (IL96)
OVER BROWN CREEK

SCALE: VERT. / HORIZ.
DATE: / /

DRAWN BY: / /
CHECKED BY: / /

PLOT DATE = 7/31/2007
 FILE NAME = c:\p\projects\652484\pabo_f\m01\m075-8048\stageconstruction\brn.cmn.dgn
 PLOT SCALE = 42,352% / IN.
 USER NAME = laughlin-1