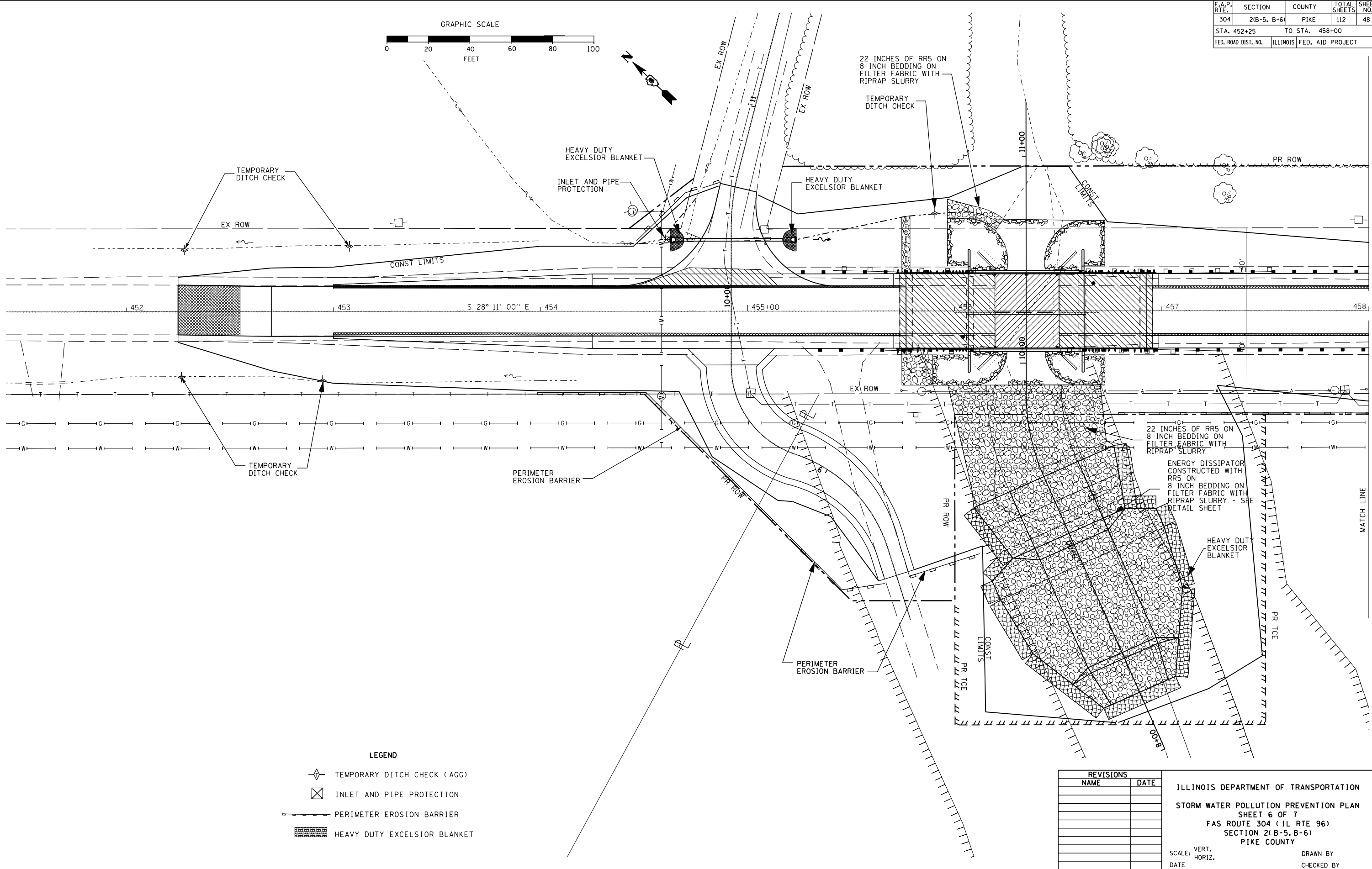
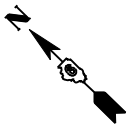
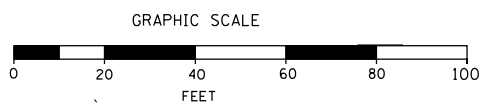


F.A.P. RTE.	SECTION	COUNTY	TOTAL SHEETS	SHEET NO.
304	2(B-5, B-6)	PIKE	112	48
STA. 452+25		TO STA. 458+00		
FED. ROAD DIST. NO.	ILLINOIS	FED. AID PROJECT		



**LEGEND**

	TEMPORARY DITCH CHECK (AGG)
	INLET AND PIPE PROTECTION
	PERIMETER EROSION BARRIER
	HEAVY DUTY EXCELSIOR BLANKET

REVISIONS	
NAME	DATE

ILLINOIS DEPARTMENT OF TRANSPORTATION  
 STORM WATER POLLUTION PREVENTION PLAN  
 SHEET 6 OF 7  
 FAS ROUTE 304 (IL RTE 96)  
 SECTION 2(B-5, B-6)  
 PIKE COUNTY

SCALE: VERT. \_\_\_\_\_  
 HORIZ. \_\_\_\_\_  
 DATE \_\_\_\_\_ DRAWN BY \_\_\_\_\_  
 CHECKED BY \_\_\_\_\_

PLOT DATE = 7/31/2007  
 FILE NAME = c:\p\projects\652484\pabo\_f.mxd\vn075-8048\storm\_brown.dgn  
 PLOT SCALE = 42,352% / IN.  
 USER NAME = laughlin-1