

F.A.P. RTE.	SECTION	COUNTY	TOTAL SHEETS	SHEET NO.
304	2(B-5,B-6)	Pike	112	61
STA.		TO STA.		
FED. ROAD DIST. NO. 6		ILLINOIS FED. AID PROJECT		

**TOTAL BILL OF MATERIAL**

Item	Unit	Super	Sub	Total
* POROUS GRANULAR EMBANKMENT (SPECIAL)	CU. YD.			156
STONE DUMPED RIPRAP, CLASS A5	TON			981
* RIPRAP FOR STILLING BASIN	TON			1,329
FILTER FABRIC	SQ. YD.			1,873
* REMOVAL OF EXISTING STRUCTURES	L.SUM			1
* REMOVAL OF EXISTING STRUCTURES NO. 1	EACH			1
STRUCTURE EXCAVATION	CU. YD.		314	314
FLOOR DRAINS	EACH	6		6
CONCRETE STRUCTURES	CU. YD.		40.0	40.0
CONCRETE SUPERSTRUCTURE	CU. YD.	88.4		88.4
BRIDGE DECK GROOVING	SQ. YD.	212		212
FURNISHING AND ERECTING PRECAST PRESTRESSED CONCRETE I-BEAMS, 36 IN.	FOOT	327		327
REINFORCEMENT BARS, EPOXY COATED	POUND	16,820	5,380	22,200
FURNISHING STEEL PILES HPI0x42	FOOT		572	572
DRIVING PILES	FOOT		572	572
TEST PILE STEEL HPI0x42	EACH		1	1
CONCRETE ENCASEMENT	CU. YD.		4.0	4.0
NAME PLATES	EACH	1		1
GEOCOMPOSITE WALL DRAIN	SQ. YD.			80
* PIPE UNDERDRAINS FOR STRUCTURES 4"	FOOT		182	182
* RIPRAP SLURRY	SQ. YD.			1,873
* TEMPORARY SOIL RETENTION SYSTEM	SQ. FT.			350
BAR SPLICERS	EACH	279	28	307

\* SEE SPECIAL PROVISIONS

**GENERAL NOTES**

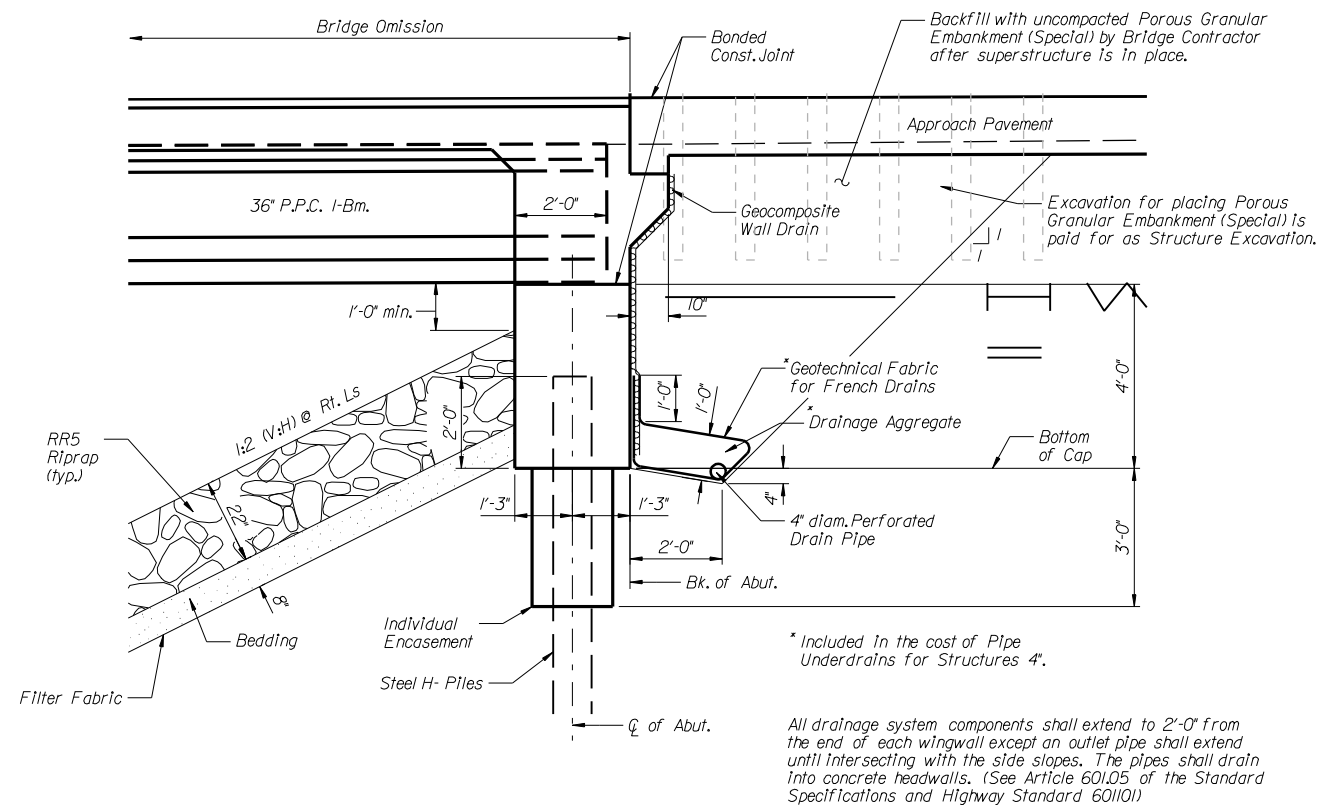
Reinforcement bars shall conform to the requirements of ASTM A 706 Gr 60 (IL Modified). See Special Provisions.

Layout of slope protection system may be varied in the field to suit the conditions as directed by the engineer.

The Contractor shall drive test piles to 110% of the Nominal Required Bearing specified in production locations at substructures specified (North Abutment) or approved by the Engineer before ordering the remainder of piles.

The Steel H-piles shall be according to AASHTO M270 Grade 50.

Excavation behind existing abutment walls shall be performed to balance front and back soil pressure before removing the existing superstructure. The contractor shall sawcut the upper portion of the existing abutments at the Stage Removal line before Stage II Removal to ensure the remaining portion will not be prematurely damaged.



**SECTION THRU INTEGRAL ABUTMENT**

REVISIONS	
NAME	DATE

ILLINOIS DEPARTMENT OF TRANSPORTATION  
 QUANTITIES AND GENERAL NOTES  
 ILLINOIS ROUTE 96 OVER  
 BROWN CREEK  
 PIKE COUNTY  
 FAP RTE 304 - SECTION 2(B-5,B-6)  
 STATION 456+34.50  
 STRUCTURE NO. 075-0509  
 SCALE: N/A  
 DATE: SEPT 2007  
 DRAWN BY: JLS  
 CHECKED BY: DSP