

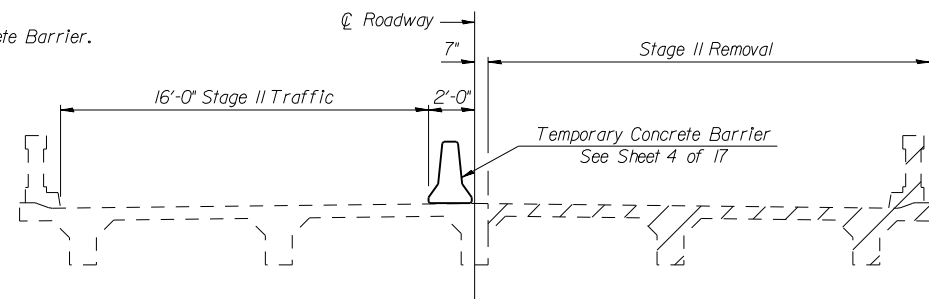
F.A.P. RTE.	SECTION	COUNTY	TOTAL SHEETS	SHEET NO.
304	2(B-5,B-6)	Pike	112	62
STA.		TO STA.		
FED. ROAD DIST. NO. 6		ILLINOIS FED. AID PROJECT		

Notes:
Hatched area indicates "Removal of Existing Structures".

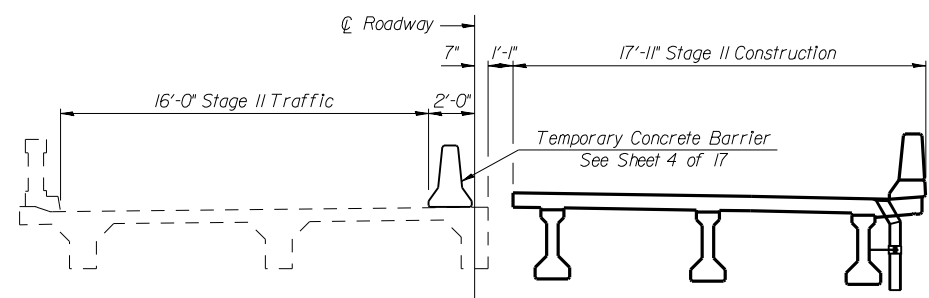
See Roadway Plans for quantity of Temporary Concrete Barrier.

All stage construction sections are looking South.

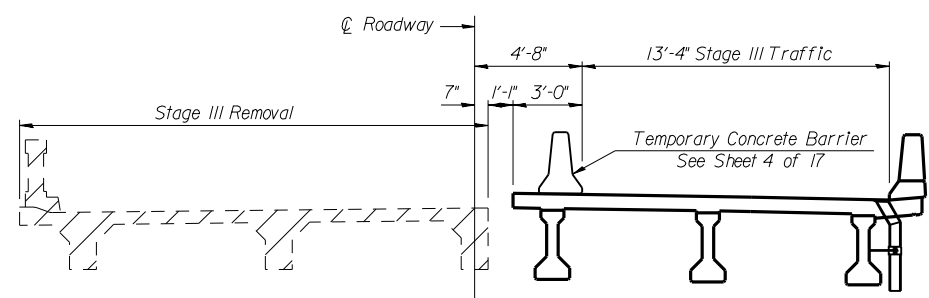
Dimensions are at Rt. L's to \odot Roadway.



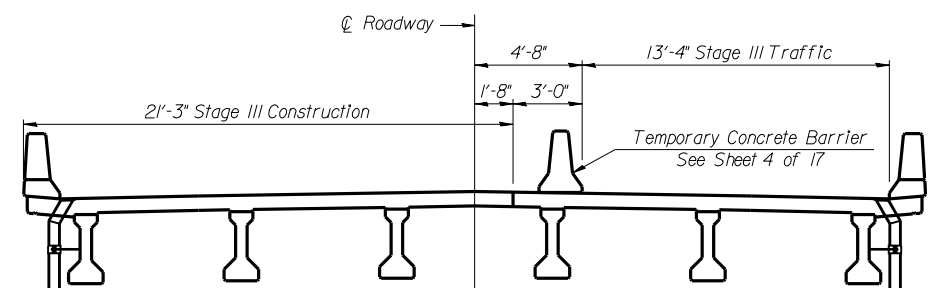
STAGE II REMOVAL



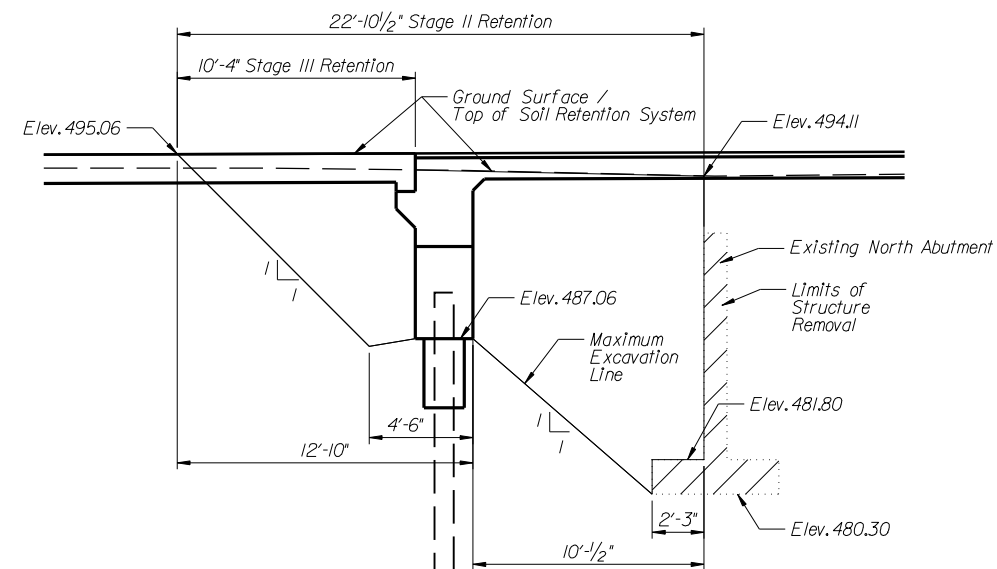
STAGE II CONSTRUCTION



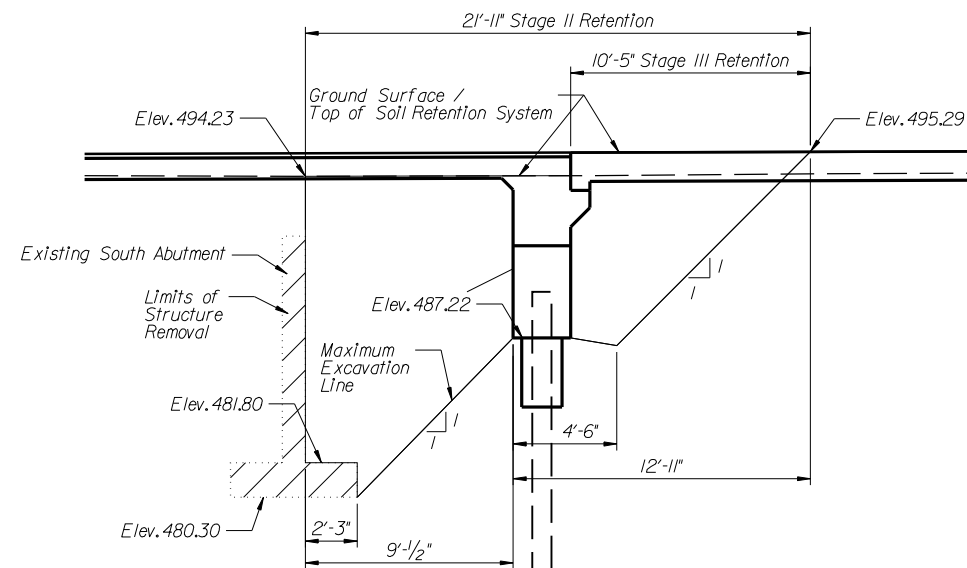
STAGE III REMOVAL



STAGE III CONSTRUCTION



TEMPORARY SOIL RETENTION SYSTEM AT NORTH ABUTMENT



TEMPORARY SOIL RETENTION SYSTEM AT SOUTH ABUTMENT

A cantilevered sheet piling design does not appear feasible and additional members or other retention systems may be necessary. The Contractor shall submit a temporary soil retention system design including plan details and calculations for review and acceptance by the Engineer.

REVISIONS	
NAME	DATE

ILLINOIS DEPARTMENT OF TRANSPORTATION
STAGE CONSTRUCTION
ILLINOIS ROUTE 96 OVER
BROWN CREEK
PIKE COUNTY
FAP RTE 304 - SECTION 2(B-5,B-6)
STATION 456+34.50
STRUCTURE NO. 075-0509

SCALE: N/A DRAWN BY JLS
DATE SEPT 2007 CHECKED BY DSP