

F.A.P. RTE.	SECTION	COUNTY	TOTAL SHEETS	SHEET NO.
685	113B-2	HANCOCK	45	17
STA. 246+00		TO STA. 252+00		
FED. ROAD DIST. NO.		ILLINOIS FED. AID PROJECT		

JAMES & SADIE MITCHELL
 [PARCEL NO. 6015103]

DAVID C. & PATRICIA A. MARSHALL
 [PARCEL NO. 6015104]

S.W. 1/4 Sec. 4 T7N R7W, 4th P.M.

EXISTING STRUCTURE SN 034-0013, ORIGINALLY BUILT AT STA 248+59 IN 1928 BY IDOT. SINGLE SPAN, POURED REINFORCED CONCRETE DECK WITH CLOSED ABUTMENTS WITH WING WALLS AND A 45° SKEW. OVERALL LENGTH 30'-10" (BK. TO BK. ABUTMENTS) AND OVERALL WIDTH 36'-2" (OUT TO OUT) WITH GUARDRAIL MOUNTED TO THE SIDES. CONTRACTOR SHALL REMOVE THE EXISTING STRUCTURE IN STAGES AND REPLACE IT WITH A TRIPLE BARREL 12'x6' BOX CULVERT. CONSTRUCTION TO BE DONE IN TWO STAGES WITH ONE TRAFFIC LANE REMAINING OPEN AT ALL TIMES.

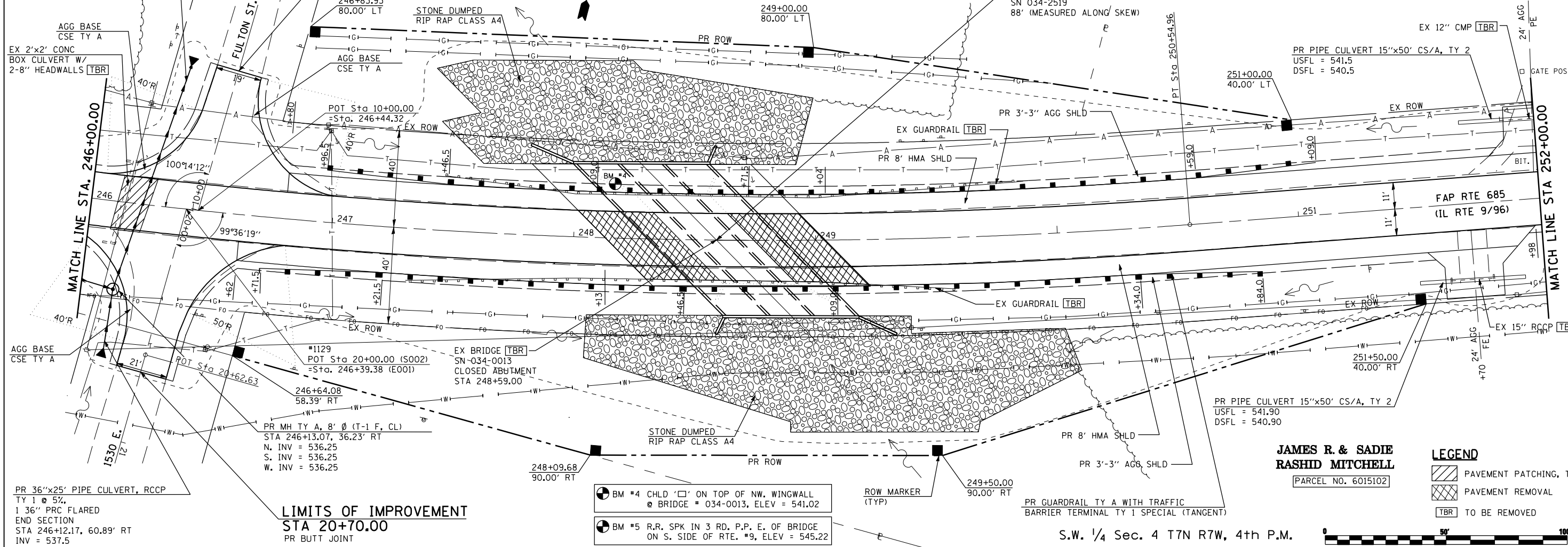
PR 36"x96' PIPE CULVERT, RCCP
 TY 1 @ 0.5%,
 1 36" PRC FLARED
 END SECTION
 STA 246+34.89, 59.29' LT
 INV = 535.75

LIMITS OF IMPROVEMENT
 STA 10+60.00
 PR BUTT JOINT

#1129
 POT Sta 20+00.00 (S002)
 =Sta. 246+39.38 (E001)
 246+64.08
 58.39' RT
 PR MH TY A, 8' Ø (T-1 F. CL)
 STA 246+13.07, 36.23' RT
 N. INV = 536.25
 S. INV = 536.25
 W. INV = 536.25

LIMITS OF IMPROVEMENT
 STA 20+70.00
 PR BUTT JOINT

PR 36"x25' PIPE CULVERT, RCCP
 TY 1 @ 5%,
 1 36" PRC FLARED
 END SECTION
 STA 246+12.17, 60.89' RT
 INV = 537.5



JAMES R. & SADIE RASHID MITCHELL
 [PARCEL NO. 6015102]

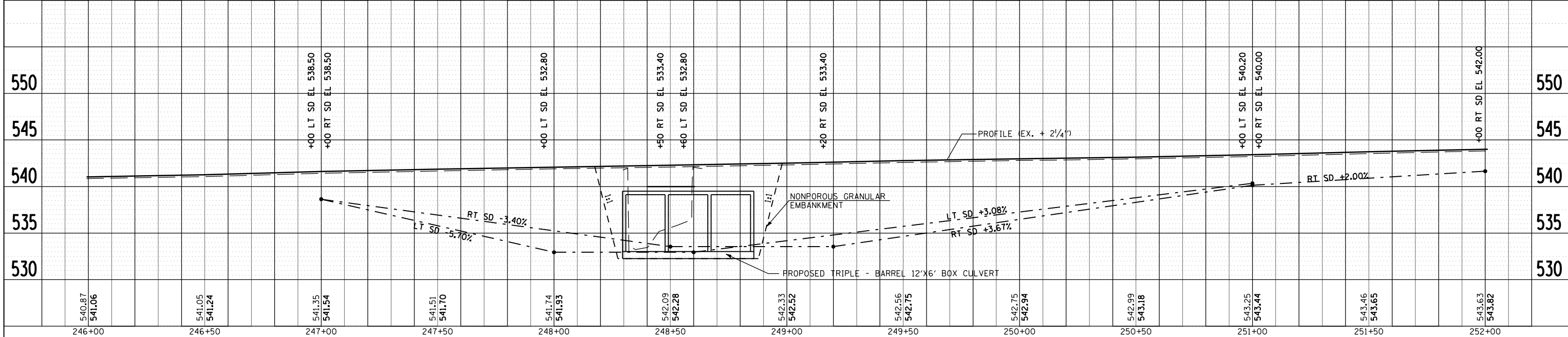
LEGEND

- [Hatched Box] PAVEMENT PATCHING, TYPE II, 12"
- [Cross-hatched Box] PAVEMENT REMOVAL
- [TBR Box] TO BE REMOVED

S.W. 1/4 Sec. 4 T7N R7W, 4th P.M.



- BM #4 CHD 'X' ON TOP OF NW. WINGWALL @ BRIDGE # 034-0013, ELEV = 541.02
- BM #5 R.R. SPK IN 3 RD. P.P. E. OF BRIDGE ON S. SIDE OF RTE. #9, ELEV = 545.22



TUG PROJ: #103007-11
 PLOT DATE: AUG 27-2007 11:48:24AM
 FILE NAME: #FILE*