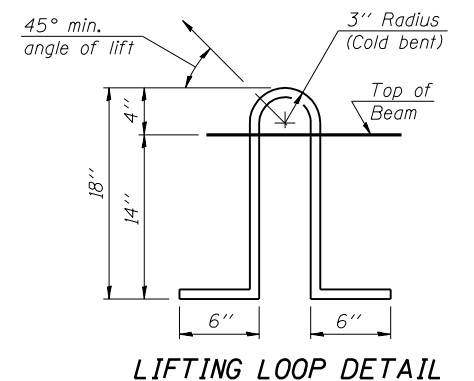
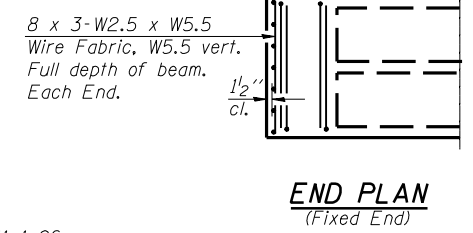


DESIGNED	BAN
CHECKED	JOH
DRAWN	TC/TD
CHECKED	BAN



Furnishing rebar in blockout shall be included in the cost of PPC Deck Beams.

NOTES

Prestressing steel shall be uncoated high strength, low relaxation 7-wire strand, Grade 270. The nominal diameter shall be 1/2" and the nominal cross-sectional area shall be 0.153 sq. in. Lifting loops shall be 2 - 1/2" φ-270 ksi strands, as shown.

The 1" φ rods in the transverse tie assembly shall be tightened to a snug fit and the threads set. Pockets that receive transverse tie bar on outside shall be filled with grout after transverse tie assembly is in place.

Non prestressing steel shall conform to ASTM A 706 (IL MOD), Grade 60.

The bearing seat surfaces shall be adjusted by shimming to assure firm and even bearing. Two 1/8" fabric adjusting shims of the dimensions of the Exterior Bearing Pad shall be provided for each bearing.

Keyway surfaces shall be cleaned to remove form oil or other bond breaking material prior to shipment of the beams. Cleaning shall be done by sandblasting the keyway areas between top of the beam and the bottom edge of the key.

Corrosion Inhibitor, per Article 1020.05(b)(12) of the Standard Specifications, shall be used in the concrete for precast prestressed concrete deck beams.

Required Release Strength, f'ci, shall be 4,000 p.s.i.

Rail post anchor devices shall be cast into outside face of exterior beams as specified elsewhere.

BILL OF MATERIAL

Item	Unit	Quantity
Furnishing Precast Prestressed Conc. Deck Bms. (21" Depth)	Sq. Ft.	6,627

SUPERSTRUCTURE DETAILS
ILLINOIS ROUTE 78 OVER MAUVAISE TERRE CREEK
F.A.P. 614 SEC. 148(BR-2)F
MORGAN COUNTY
STATION 16+34.85
STR. NO. 069-0005

HUTCHISON ENGINEERING, INC.
JACKSONVILLE, ILLINOIS
 Rev: _____ Date: _____