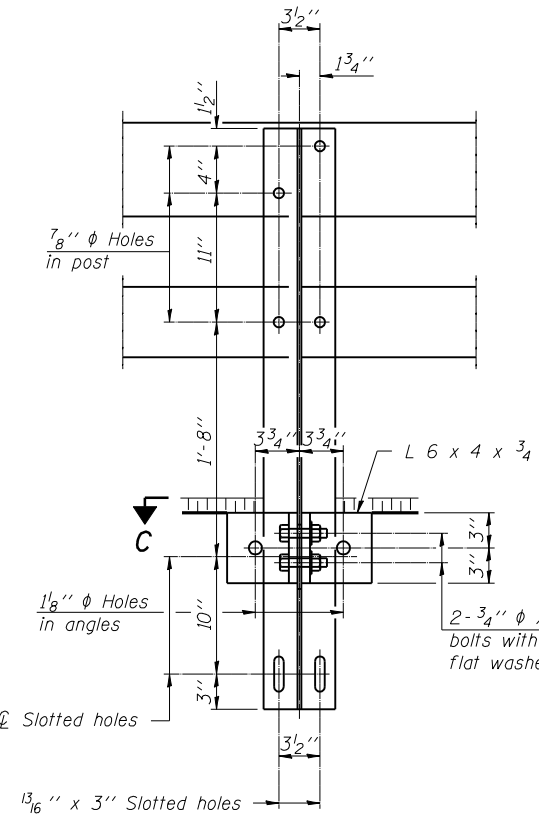
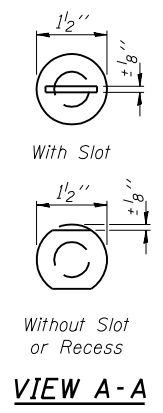
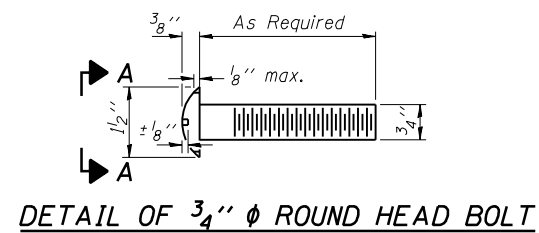
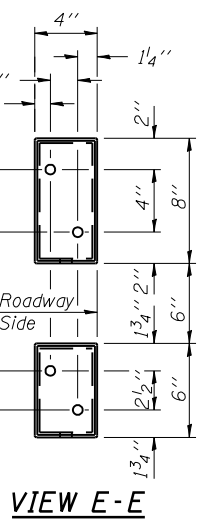
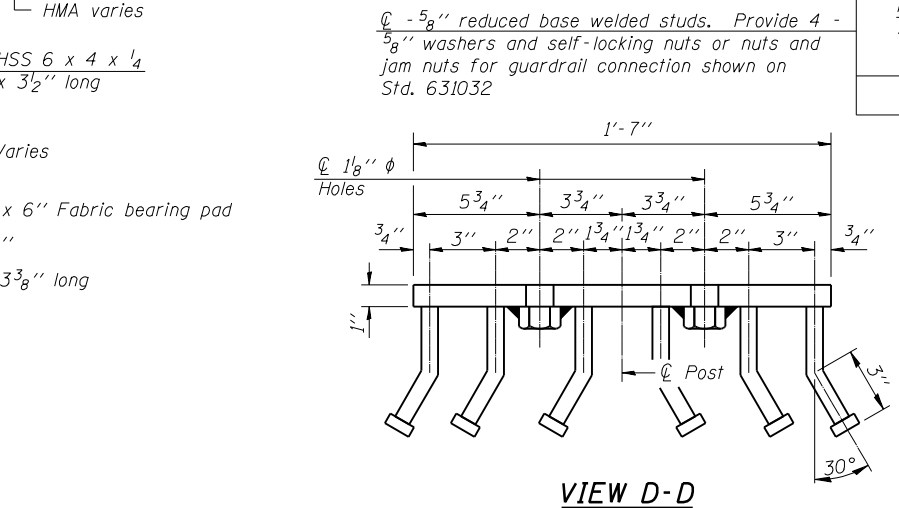
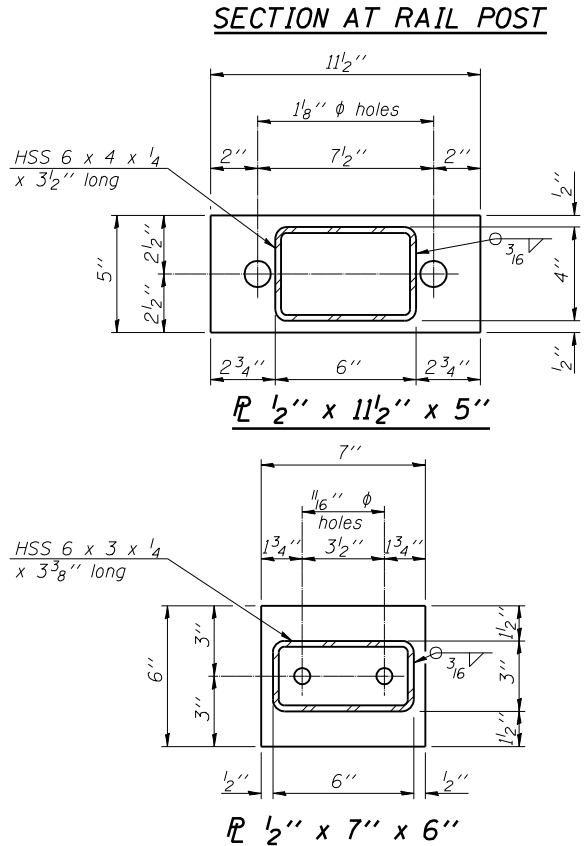
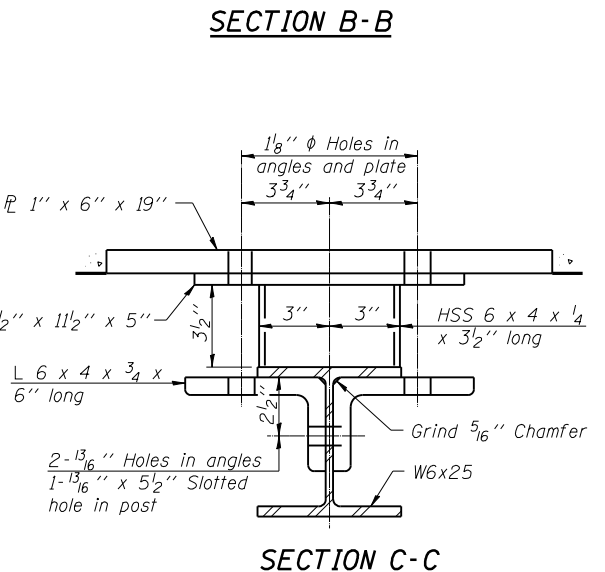
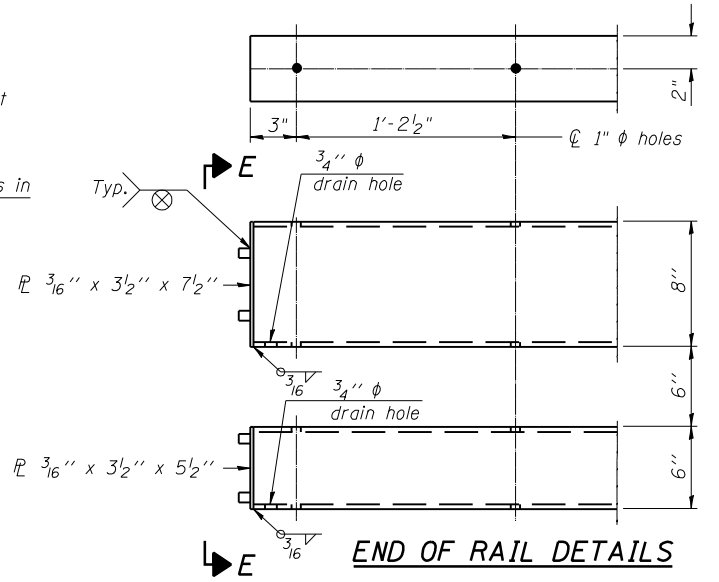
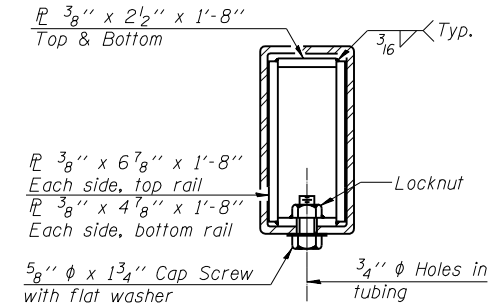
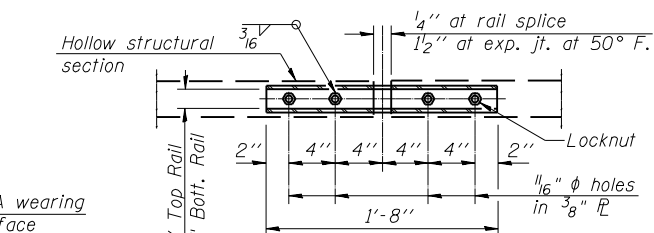
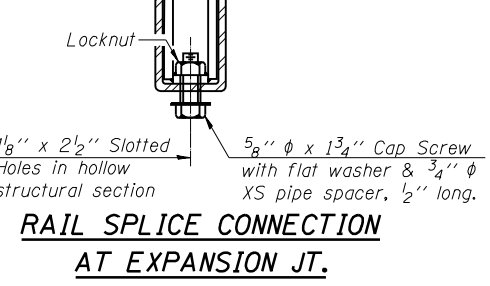
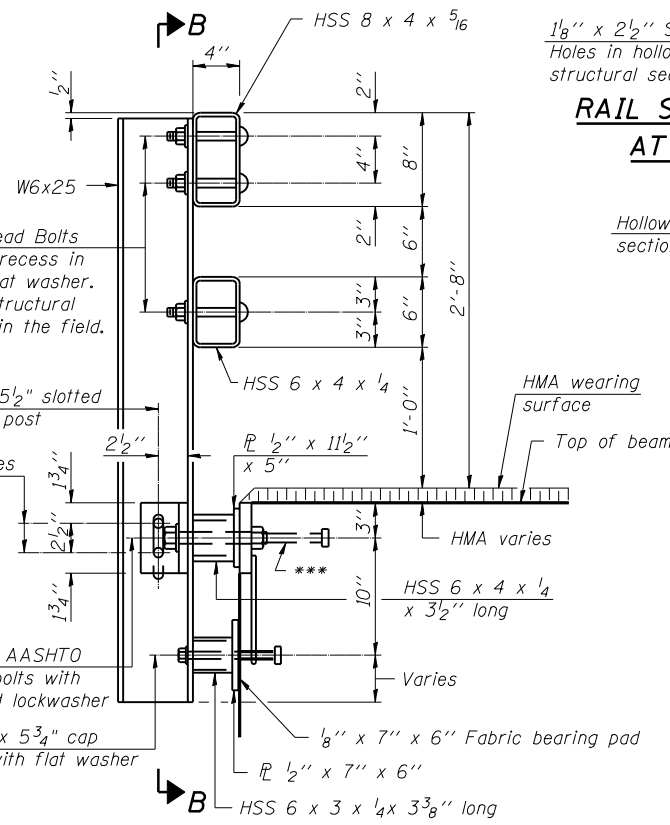


FOR RAIL POST SPACING SEE SH.#5 OF 12



4-3/4"  $\phi$  x 6" Round Head Bolts (With slot or approved recess in head) with locknut & flat washer. 7/8"  $\phi$  holes in hollow structural section may be drilled in the field.



**THIS SHEET IS FOR INFORMATION ONLY**

**Notes:**

All field drilled holes shall be coated with an approved zinc rich paint before erection.

For multi-span bridges, sufficient 1/4" x 6" x 1'-2" galvanized steel shims shall be provided to align rail between adjacent spans. Cost included with Steel Bridge Rail, Type SM.

All steel rail members shall be galvanized according to Article 509.05 of the Standard Specifications.

\*\*\* The studs of the anchor devices shall be placed below the top reinforcement bars and the outermost longitudinal reinforcement bar shall be placed directly above the studs of the rail post anchor device.

**BILL OF MATERIAL**

Item	Unit	Quantity
Steel Railing, Type SM	Foot	405

**STEEL RAILING, TYPE SM WITH HOT-MIX ASPHALT SURFACE**

**ILLINOIS ROUTE 78 OVER MAUVAISE TERRE CREEK**

**F.A.P. 614 SEC. 148(BR-2)F**

**MORGAN COUNTY**

**STATION 16+34.85**

**STR. NO. 069-0005**

**HUTCHISON ENGINEERING, INC.**

**JACKSONVILLE, ILLINOIS**

Rev: \_\_\_\_\_ Date: \_\_\_\_\_

DESIGNED	BAN
CHECKED	JOH
DRAWN	TC/TD
CHECKED	BAN