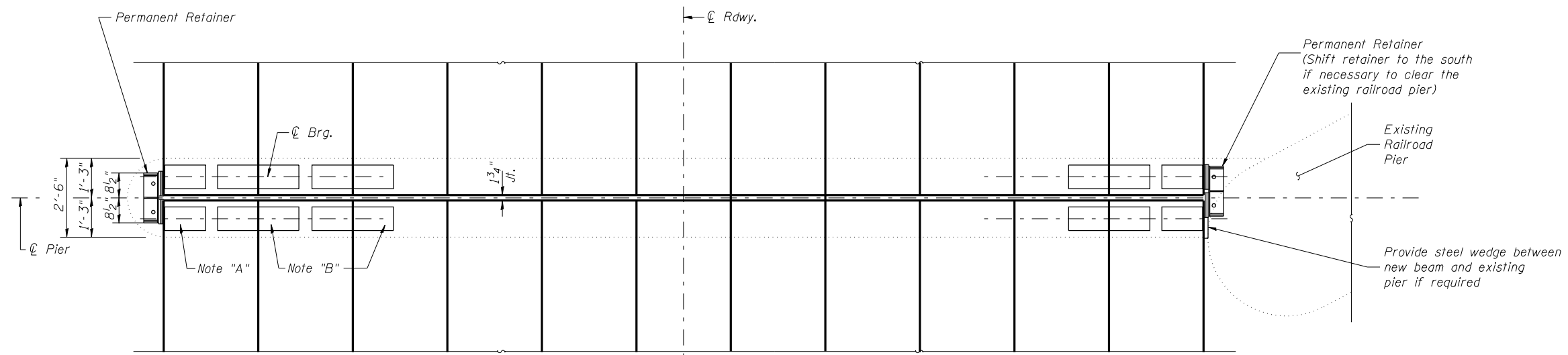


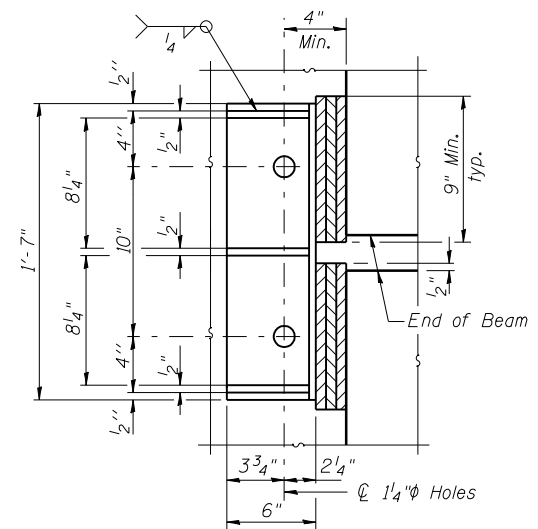
ROUTE NO.	SEC.	COUNTY	TOTAL SHEETS	SHEET NO.
FAP 614	*	MORGAN	14	12
FED. ROAD DIST. NO. 7	ILLINOIS	PROJECT		
* 148(BR-2)F				

SHEET NO. 10
12 SHEETS

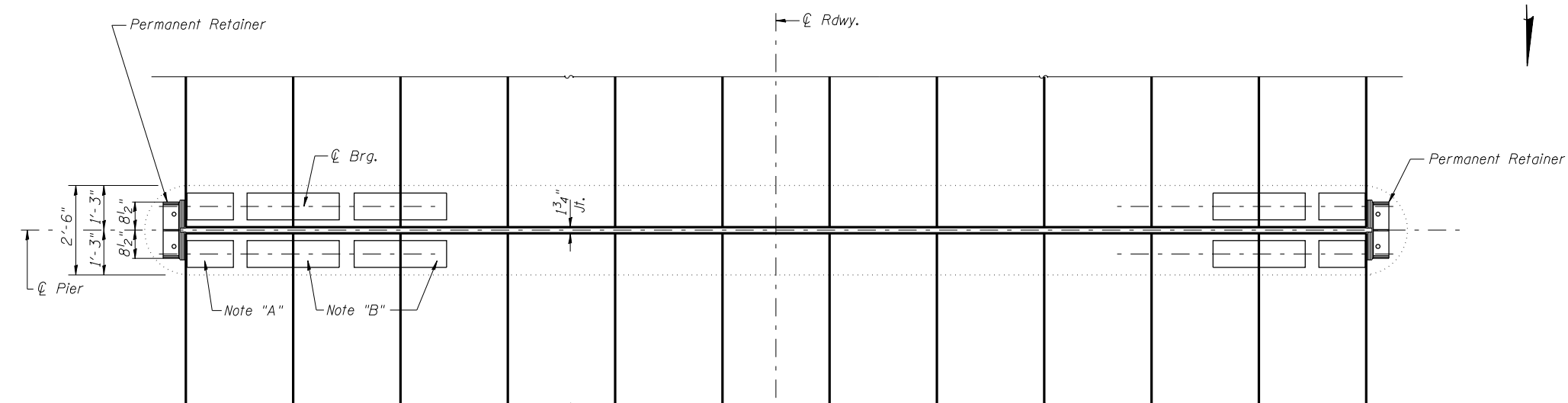
CONTRACT NO. 72B49



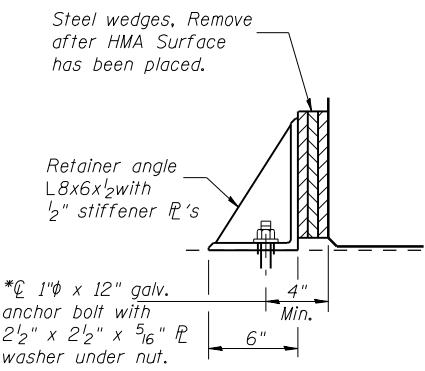
PLAN - PIER 1



PLAN



PLAN - PIER 3



ELEVATION

RETAINER ANGLE DETAIL

*Anchor bolts or approved threaded rod may be placed in drilled holes and grouted in place.

Note "A": Fabric Bearing Pad (2) 9"x 1/4" x 1'-3 1/2"
Typical at each outside beam.

Note "B": Fabric Bearing Pad (2) 9"x 1/4" x 2'-7".
Typical at each interior beam except as noted.

Notes:

The permanent retainers and hardware shall be galvanized after shop fabrication accordance to AASHTO M111 ASTM 385. Anchor bolts shall be ASTM F1554 all-thread (or an Engineer-approved alternate material) of the grade(s) and diameter(s) specified. ASTM A307 Grade C anchor bolts may be used in lieu of ASTM F1554 Grade 36 (Fy=36ksi). The corresponding specified grade of AASHTO M314 anchor bolts may be used in lieu of ASTM F1554. Drilled and set anchor bolts shall be installed according to Article 521.06 of the Standard Specifications. Cost of retainers, accessories, and galvanizing are included with Furnishing Precast Prestressed Concrete Deck Beams.

THIS SHEET IS FOR INFORMATION ONLY

**PIERS 1 & 3
ILLINOIS ROUTE 78 OVER
MAUVAISE TERRE CREEK
F.A.P. 614 SEC. 148(BR-2)F
MORGAN COUNTY
STATION 16+34.85
STR. NO. 069-0005**

**HUTCHISON ENGINEERING, INC.
JACKSONVILLE, ILLINOIS**

Rev: _____ Date: _____

DESIGNED	BAN
CHECKED	JOH
DRAWN	TC/TD
CHECKED	BAN