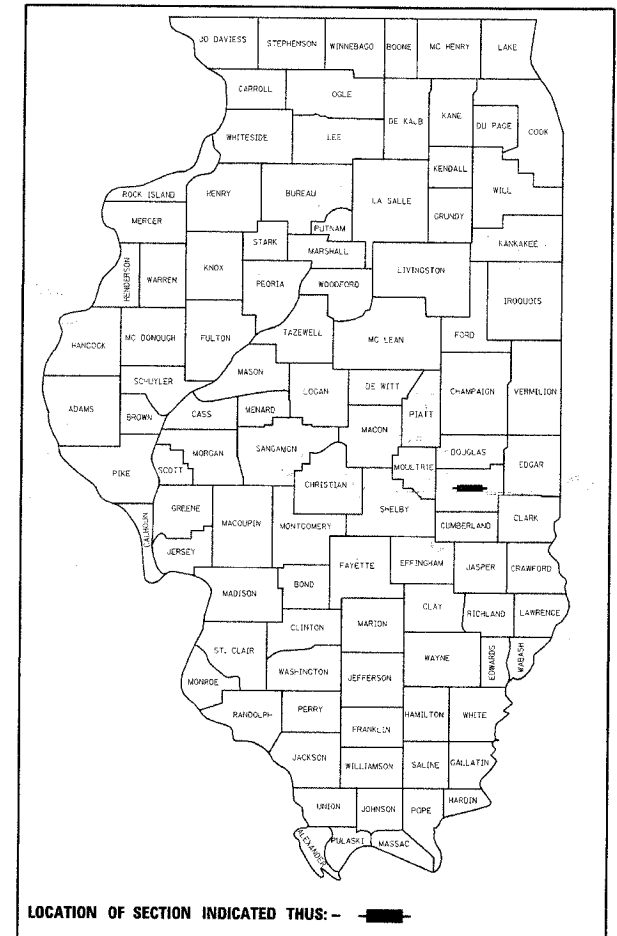


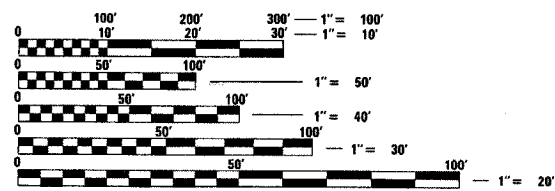
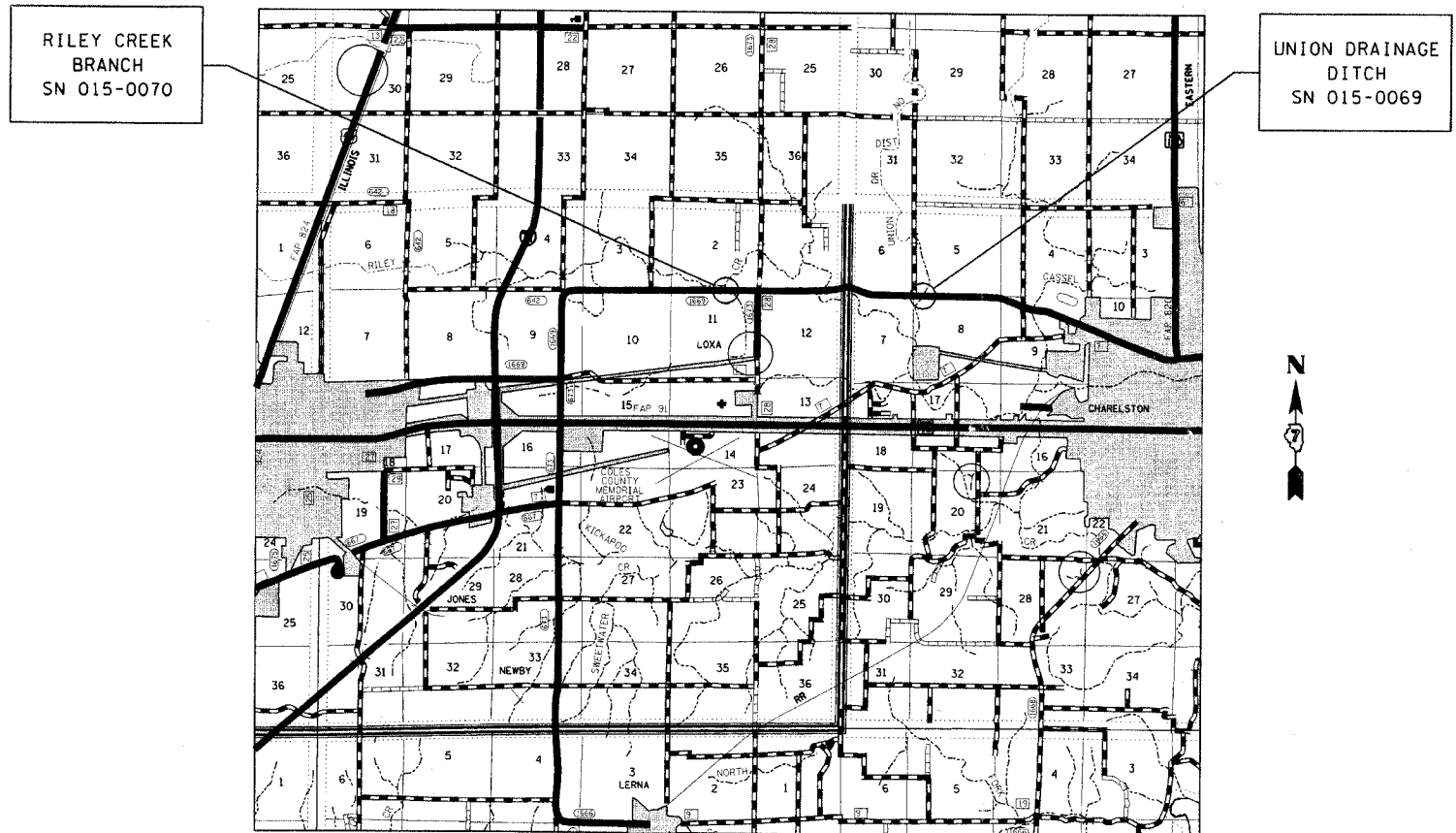
CONTRACT NO. 74267				
F.A.S. RTE. 1669	SECTION	COUNTY COLES	TOTAL SHEETS 17	SHEET NO. 1

STATE OF ILLINOIS
DEPARTMENT OF TRANSPORTATION
DIVISION OF HIGHWAYS
PROPOSED
HIGHWAY PLANS
FAS ROUTE 1669 (OLD RT IL 316)
D7 BRIDGE REPAIRS 2008-3
COLES COUNTY
C-97-100-07

FOR INDEX OF SHEETS, SEE SHEET NO. 2



LOCATION OF SECTION INDICATED THUS: —



FULL SIZE PLANS HAVE BEEN PREPARED USING STANDARD ENGINEERING SCALES. REDUCED SIZED PLANS WILL NOT CONFORM TO STANDARD SCALES. IN MAKING MEASUREMENTS ON REDUCED PLANS, THE ABOVE SCALES MAY BE USED.

J.U.L.I.E.
JOINT UTILITY LOCATION INFORMATION FOR EXCAVATION
1-800-892-0123

CONTRACT NO. 74267

015-0069 2004 ADT = 4050
015-0070 2004 ADT = 3250

GROSS LENGTH = 2.40 MILES
NET LENGTH = 0.20 MILES

STATE OF ILLINOIS
DEPARTMENT OF TRANSPORTATION
DIVISION OF HIGHWAYS
 SUBMITTED August 29 20 07
Christina M. Reed
 DEPUTY DIRECTOR OF HIGHWAYS, REGION ENGINEER
October 12, 2007
Eric E. Harsh
 ENGINEER OF DESIGN AND ENVIRONMENT
October 12, 2007
Milton R. Sees, P.E.
 DIRECTOR OF HIGHWAYS, CHIEF ENGINEER

PRINTED BY THE AUTHORITY OF THE STATE OF ILLINOIS

F.A.S. RTE.	SECTION	COUNTY	TOTAL SHEETS	SHEET NO.
1669		COLES	17	2
STA.		TO STA.		
FED. ROAD DIST. NO.	ILLINOIS	FED. AID PROJECT		

GENERAL NOTES

THIS SECTION SHALL BE CONSTRUCTED IN ACCORDANCE WITH THE PLANS; THE STANDARD SPECIFICATIONS FOR ROAD AND BRIDGE CONSTRUCTION, ADOPTED JANUARY 1, 2007; THE SUPPLEMENTAL SPECIFICATIONS AND RECURRING SPECIAL PROVISIONS INDICATED ON THE CHECKSHEET; AND THE SPECIAL PROVISIONS INCLUDED IN THE PROPOSAL.

THIS PROJECT IS LOCATED BETWEEN MATTOON AND CHARLESTON ON OLD ILLINOIS ROUTE 316 IN COLES COUNTY. THE PROJECT INCLUDES THE FOLLOWING TWO STRUCTURES: STRUCTURE NUMBER 015-0069 OVER UNION DRAINAGE DITCH AND STRUCTURE NUMBER 015-0070 OVER RILEY CREEK BRANCH.

THE WORK INCLUDED IN THIS PROJECT CONSISTS OF CONSTRUCTION OF PCC BASE COURSE WIDENING, REMOVAL OF THE EXISTING BITUMINOUS WEARING SURFACE AND WATERPROOFING MEMBRANE SYSTEM, KEYWAY REPAIR, NEW EXPANSION JOINT, CONSTRUCTION OF THE WATERPROOFING MEMBRANE AND BITUMINOUS WEARING SURFACES, PAVEMENT STRIPING, AND ALL OTHER WORK NECESSARY TO COMPLETE THIS SECTION.

ALL EXCAVATED MATERIAL SHALL BE DISPOSED OF OFF THE RIGHT OF WAY. DISPOSAL OF THE EXCAVATED MATERIAL WILL BE INCLUDED IN THE PRICE PER UNIT FOR PCC BASE CORSE WIDENING, 8".

THE MATERIAL USED FOR AGGREGATE SHOULDERS, TYPE B SHALL BE CRUSHED STONE.

THE TOTAL QUANTITY OF PAINT PAVEMENT MARKING - LINE 4 INCH CONSISTS OF:

STR#	YELLOW FT	WHITE FT
015-0069	917	590
015-0070	128	614

ALL EXISTING RAISED REFLECTIVE MARKERS LOCATED WITHIN THE LIMITS OF THE ABUTMENTS AT EACH STRUCTURE SHALL BE REMOVED. THIS WORK WILL BE INCLUDED IN THE COST AT THE CONTRACT UNIT PRICE FOR HOT-MIX ASPHALT SURFACE REMOVAL. REPLACEMENT OF THE BI-DIRECTIONAL AMBER MARKERS AT THE COMPLETION OF THE BITUMINOUS TAPER CONSTRUCTION WILL BE PAID FOR AT THE CONTRACT UNIT PRICE FOR RAISED REFLECTIVE PAVEMENT MARKER.

THE REFLECTIVE LENSE OF ALL RAISED REFLECTIVE MARKERS LOCATED BETWEEN THE STOP BARS AND THE ABUTMENTS AT EACH STRUCTURE SHALL BE REMOVED PRIOR TO STAGE I CONSTRUCTION. THIS WORK WILL BE PAID FOR AT THE CONTRACT UNIT PRICE FOR RAISED REFLECTIVE PAVEMENT MARKER, REFLECTOR REMOVAL. REPLACEMENT OF THE BI-DIRECTIONAL AMBER REFLECTORS AT THE COMPLETION OF STAGE II WILL BE PAID FOR AT THE CONTRACT UNIT PRICE FOR REPLACEMENT REFLECTOR.

THE FOLLOWING RATES OF APPLICATION HAVE BEEN USED IN CALCULATING PLAN QUANTITIES:

BITUMINOUS CONCRETE	112	LBS/SQ YD - IN
GRANULAR MATERIALS	2.05	TON/CU YD

THE FOLLOWING MIXTURE REQUIREMENTS ARE APPLICABLE FOR THIS PROJECT:
STRUCTURE 015-0069 & 015-0070

MIXTURE USE: SURFACE COURSE
APPLICATION: HOT-MIX ASPHALT SURFACE COURSE, MIX "C" N70
PG GRADE: PG 64-22
RAP %: 10%
DESIGN AIR VOIDS: 4.0% @ NDESIGN = 70
MIXTURE COMPOSITION: IL-9.5
FRICTION AGGREGATE: MIXTURE C

THE CONTRACTOR SHALL BE RESPONSIBLE FOR PROTECTING UTILITY PROPERTY FROM CONSTRUCTION OPERATION AS OUTLINED IN ARTICLE 107.31 OF THE STANDARD SPECIFICATIONS. THE J.U.L.I.E. NUMBER IS 800-892-0123. A MINIMUM OF 96 HOURS ADVANCE NOTICE IS REQUESTED.

INDEX OF SHEETS

SHEET NO

- 1 COVER SHEET
- 2 INDEX OF SHEETS AND GENERAL NOTES
- 3 SUMMARY OF QUANTITIES
- 4 QUANTITY SCHEDULES
- 5-12 STRUCTURE NO. 015-0069 STAGING AND CONSTRUCTION DETAILS
- 13-17 STRUCTURE NO. 015-0070 STAGING AND CONSTRUCTION DETAILS

LIST OF HIGHWAY STANDARDS

- 000001-04 STANDARD SYMBOLS, ABBREVIATIONS AND PATTERNS
- 001001-01 AREAS OF REINFORCEMENT BARS
- 001006 DECIMAL OF AN INCH AND OF A FOOT
- 635006-02 REFLECTOR AND TERMINAL MARKER PLACEMENT
- 635011-01 REFLECTOR MARKER AND MOUNTING DETAILS
- 701006-01 OFF-ROAD OPERATIONS, 2L 2W, 15' TO 24" AWAY, SPEEDS > 45 MPH
- 701011-01 OFF-ROAD MOVING OPERATIONS, 2L 2W, DAY ONLY, FOR SPEEDS > 45 MPH
- 701201-02 LANE CLOSURE, 2L 2W, DAY ONLY, ON-ROAD TO 600 MM OFF-ROAD, SPEEDS > 45 MPH
- 701301-02 LANE CLOSURE, 2L 2W, SHORT TIME OPERATIONS
- 701311-02 LANE CLOSURE, 2L 2W, MOVING DAY ONLY OPERATIONS
- 701316-03 LANE CLOSURE, 2L 2W, BRIDGE REPAIR, FOR SPEEDS > 45 MPH
- 702001-06 TRAFFIC CONTROL DEVICES
- 720001 SIGN PANEL MOUNTING DETAILS
- 720006-01 SIGN PANEL ERECTION DETAILS
- 780001-01 TYPICAL PAVEMENT MARKINGS
- 781001-02 TYPICAL APPLICATIONS OF RAISED REFLECTIVE PAVEMENT MARKERS

701326-02

PLT DATE = 8/27/2007
FILE NAME = c:\projects\74267\whitover-74267.dgn
PLT SCALE = 28.0000 / IN.
USER NAME = staffamk

REVISIONS	
NAME	DATE

ILLINOIS DEPARTMENT OF TRANSPORTATION

**GENERAL NOTES
&
INDEX OF SHEETS**

SCALE: VERT. DATE
HORIZ. DRAWN BY
CHECKED BY

F.A.S. RTE.	SECTION	COUNTY	TOTAL SHEETS	SHEET NO.
1669		COLES	17	3
STA.		TO STA.		
FED. ROAD DIST. NO.	ILLINOIS	FED. AID PROJECT		

SUMMARY OF QUANTITIES			TOTAL QUANTITIES	CONSTRUCTION TYPE CODE	
CODE NO	ITEM	UNIT		SN 015-0069	SN 015-0070
35400300	PORTLAND CEMENT CONCRETE BASE COURSE WIDENING 8"	SQ YD	247	83	164
40603315	HOT-MIX ASPHALT SURFACE COURSE, MIX "C", N70	TON	60	37	23
44001005	HOT-MIX ASPHALT SURFACE REMOVAL	SQ YD	431	260	171
48101200	AGGREGATE SHOULDERS, TYPE B	TON	14	6	8
50102400	CONCRETE REMOVAL	CU YD	3.1	3.1	
50300255	CONCRETE SUPERSTRUCTURE	CU YD	3.6	3.6	
50800205	REINFORCEMENT BARS, EPOXY COATED	POUND	250	250	
50800515	BAR SPLICERS	EACH	6	6	
52000110	PREFORMED JOINT STRIP SEAL	FOOT	33	33	
58100200	WATERPROOFING MEMBRANE SYSTEM	SQ YD	431	260	171
58300100	PORTLAND CEMENT MORTAR FAIRING COURSE	FOOT	484	304	180
67000500	ENGINEER'S FIELD OFFICE, TYPE B	CAL MO	2	1	1
67100100	MOBILIZATION	L SUM	1	0.5	0.5
70100100	TRAFFIC CONTROL AND PROTECTION, STANDARD 701316	EACH	2	1	1
70100500	TRAFFIC CONTROL AND PROTECTION, STANDARD 701326	L SUM	1	0.5	0.5
70103815	TRAFFIC CONTROL SURVEILLANCE	CAL DA	3	3	
70106500	TEMPORARY BRIDGE TRAFFIC SIGNALS	EACH	2	1	1
70300100	SHORT-TERM PAVEMENT MARKING	FOOT	97	46	51
70300220	TEMPORARY PAVEMENT MARKING - LINE 4"	FOOT	3453	2097	1356
70301000	WORK ZONE PAVEMENT MARKING REMOVAL	SQ FT	481	234	247
* 78001110	PAINT PAVEMENT MARKING - LINE 4"	FOOT	2249	1507	742
* 78100100	RAISED REFLECTIVE PAVEMENT MARKER	EACH	3	2	1
* 78100300	REPLACEMENT REFLECTOR	EACH	9	4	5
78300100	PAVEMENT MARKING REMOVAL	SQ FT	700	499	201
X0322050	RAISED REFLECTIVE PAVEMENT MARKER, REFLECTOR REMOVAL	EACH	9	4	5
Z0003700	BEARING PAD ADJUSTMENT	EACH	42	22	20
Z0032700	KEYWAY REPAIR	FOOT	484	304	180

PLOT DATE = 8/27/2007
 FILE NAME = c:\projects\74267\shltacq-74267.dgn
 PLOT SCALE = 20.0000 / IN.
 USER NAME = sterfennik

* SPECIALTY ITEMS

Rev.

REVISIONS	
NAME	DATE

ILLINOIS DEPARTMENT OF TRANSPORTATION

SUMMARY OF QUANTITIES

SCALE: VERT. DATE
 HORIZ.

DRAWN BY
 CHECKED BY

F.A.S. RTE.	SECTION	COUNTY	TOTAL SHEETS	SHEET NO.
1669		COLES	17	4
STA.		TO STA.		
FED. ROAD DIST. NO.	ILLINOIS	FED. AID PROJECT		

BRIDGE REPAIR SCHEDULE

STRUCTURE NUMBER	LENGTH	CONCRETE REMOVAL	CONCRETE SUPERSTRUCTURE	REINFORCEMENT BARS, EPOXY COATED	BAR SPLICERS	PERFORMED JOINT STRIP SEAL	HOT-MIX ASPHALT SURFACE REMOVAL	KEYWAY REPAIR	PORTLAND CEMENT MORTAR FAIRING COURSE	WATERPROOFING MEMBRANE SYSTEM	HOT-MIX ASPHALT CONCRETE SURFACE COURSE, MIXTURE C, N70	BEARING PAD ADJUSTMENT
	FOOT	CU YD	CU YD	POUND	EACH	FOOT	SQ YD	FOOT	FOOT	SQ YD	TON	EACH
015-0069	71											
Stage I		1.63	1.81	123.7		16.5	122	233	233	130	18.5	12
Stage II		1.44	1.81	123.7		16.5	138	71	71	130	18.5	10
TOTAL		3.1	3.6	250	6	33	260	304	304	260	37	22
015-0070	51.33											
Stage I							91	62	62	85.5	11.5	10
Stage II							80	118	118	85.5	11.5	10
TOTAL							171	180	180	171	23	20
TOTAL		3.1	3.6	250	6	33	431	484	484	431	60	42

PAVEMENT MARKING SCHEDULE

STRUCTURE NUMBER	PAVEMENT MARKING REMOVAL	WORK ZONE PAVEMENT MARKING REMOVAL	SHORT TERM PAVEMENT MARKING	TEMPORARY PAVEMENT MARKING - LINE 4"	RAISED REFLECTOR PAVEMENT MARKER, REFLECTOR REMOVAL	RAISED REFLECTIVE PAVEMENT MARKER	REPLACEMENT REFLECTOR	PAINT PAVEMENT MARKING - LINE 4"
	SQ FT	SQ FT	FEET	FEET	EACH	EACH	EACH	FEET
015-0069	420	193	40	1738	4	2	4	1268
015-0070	178	205	45	1101	5	1	5	607
TOTAL	598	398	85	2839	9	3	9	1875

PLOT DATE = 8/27/2007
 PLOT SCALE = 20.0000
 PLOT USER = staff@emk

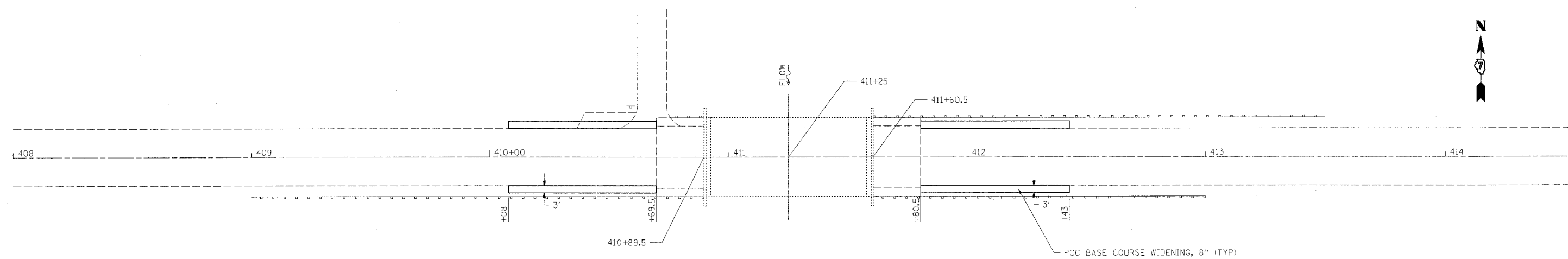
REVISIONS	
NAME	DATE

ILLINOIS DEPARTMENT OF TRANSPORTATION

SCHEDULES

SCALE: VERT. DRAWN BY
 HORIZ. CHECKED BY
 DATE

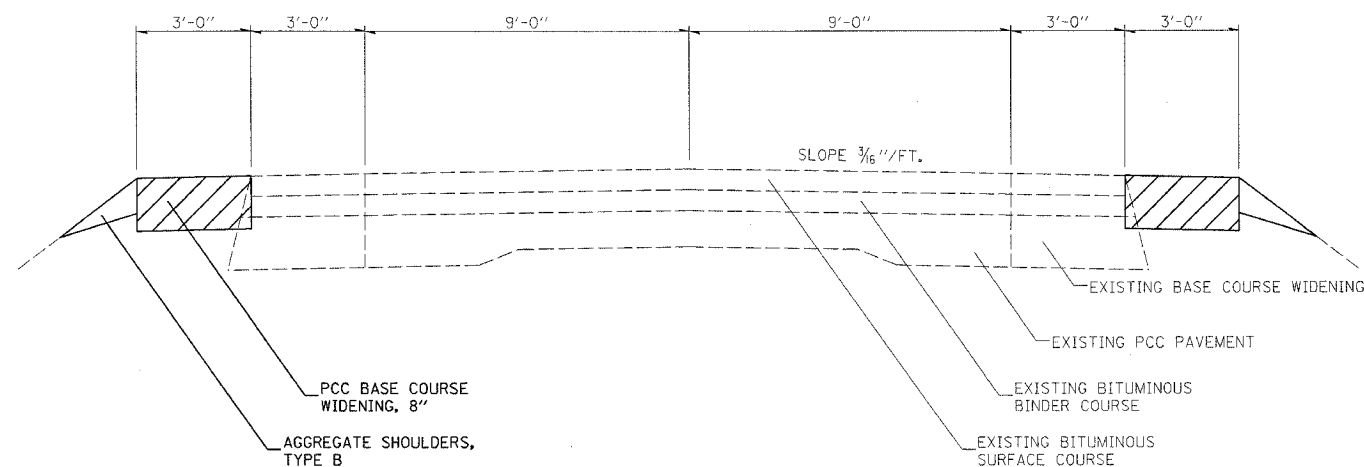
F.A.S. RTE.	SECTION	COUNTY	TOTAL SHEETS	SHEET NO.
1669		COLES	17	5
STA.		TO STA.		
FED. ROAD DIST. NO.	ILLINOIS	FED. AID PROJECT		



PCC BASE COURSE WIDENING

LT STA	410+07.5 TO STA	410+69.5=	20.7S. Y.
LT STA	411+80.5 TO STA	412+42.5=	20.7S. Y.
RT STA	410+07.5 TO STA	410+69.5=	20.7S. Y.
RT STA	411+80.5 TO STA	412+42.5=	20.7S. Y.
	TOTAL	=	83.0S. Y.

AGGREGATE SHOULDERS TYPE B = 6.0 TONS



TYPICAL ROADWAY CROSS SECTION

REVISIONS	
NAME	DATE

ILLINOIS DEPARTMENT OF TRANSPORTATION

**BASE COURSE WIDENING
S.N. 015-0069**

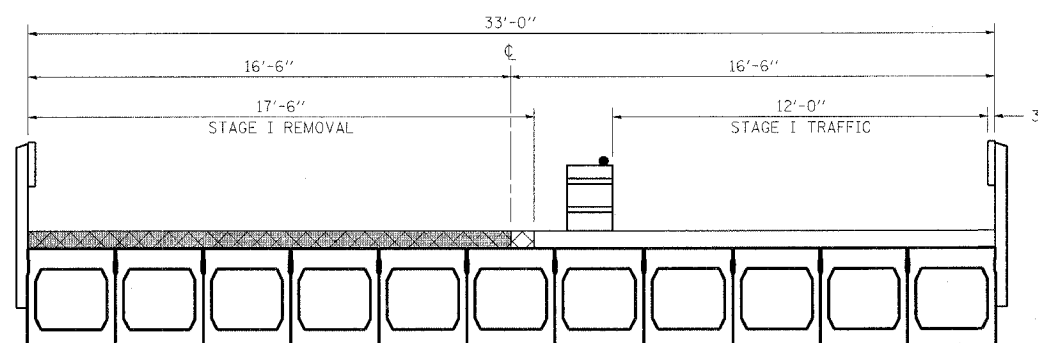
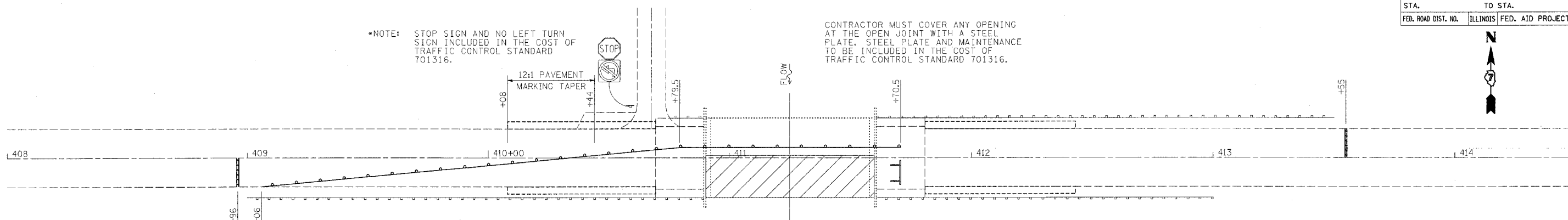
SCALE: VERT.
HORIZ.
DATE

DRAWN BY
CHECKED BY

F.A.S. RTE.	SECTION	COUNTY	TOTAL SHEETS	SHEET NO.
1669		COLES	17	6
STA.		TO STA.		
FED. ROAD DIST. NO.	ILLINOIS	FED. AID PROJECT		

*NOTE: STOP SIGN AND NO LEFT TURN SIGN INCLUDED IN THE COST OF TRAFFIC CONTROL STANDARD 701316.

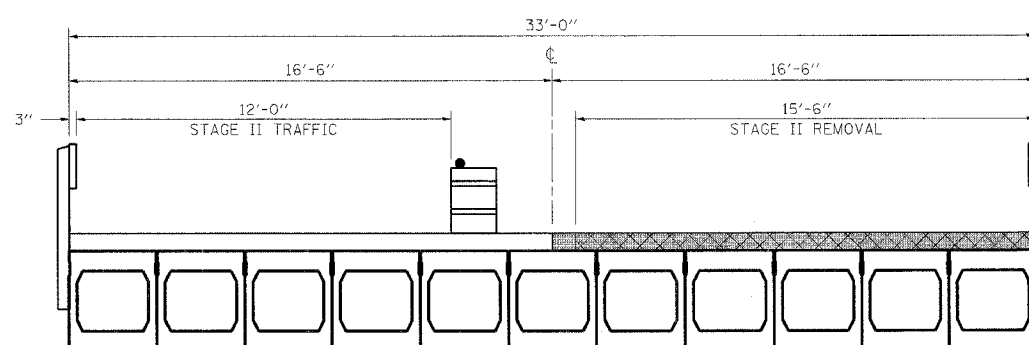
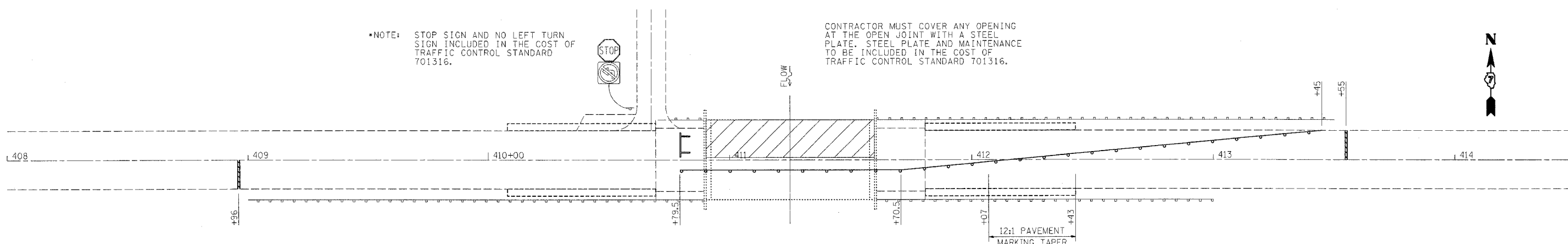
CONTRACTOR MUST COVER ANY OPENING AT THE OPEN JOINT WITH A STEEL PLATE. STEEL PLATE AND MAINTENANCE TO BE INCLUDED IN THE COST OF TRAFFIC CONTROL STANDARD 701316.



STAGE I CONSTRUCTION
LOOKING WEST

*NOTE: STOP SIGN AND NO LEFT TURN SIGN INCLUDED IN THE COST OF TRAFFIC CONTROL STANDARD 701316.

CONTRACTOR MUST COVER ANY OPENING AT THE OPEN JOINT WITH A STEEL PLATE. STEEL PLATE AND MAINTENANCE TO BE INCLUDED IN THE COST OF TRAFFIC CONTROL STANDARD 701316.



STAGE II CONSTRUCTION
LOOKING WEST

- WORK AREA
- BRIDGE WEARING SURFACE REMOVAL
- BITUMINOUS WEARING SURFACE
- TYPE III BARRICADE WITH FLASHING LIGHTS
- BARRICADE OR DRUM WITH STEADY BURN LIGHT

REVISIONS	
NAME	DATE

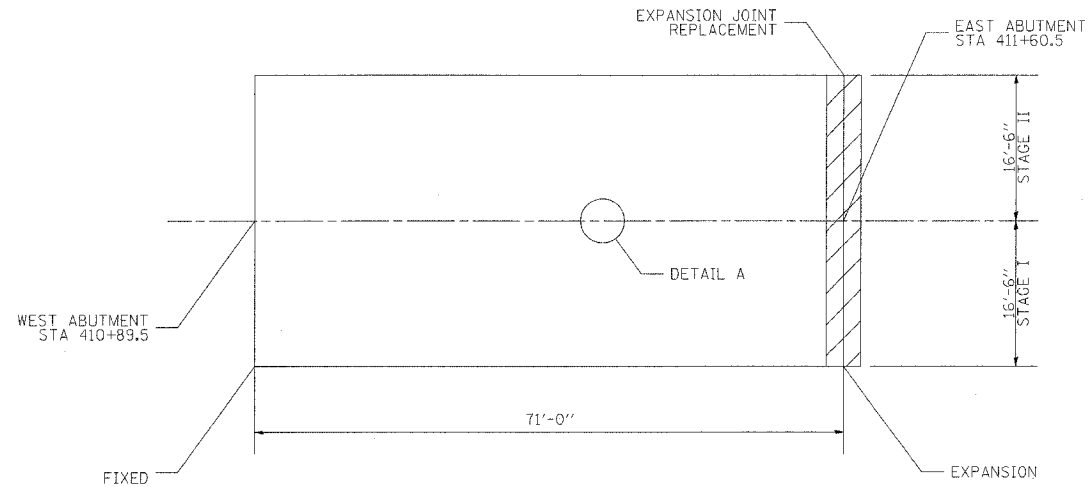
ILLINOIS DEPARTMENT OF TRANSPORTATION

TRAFFIC CONTROL
S.N. 015-0069

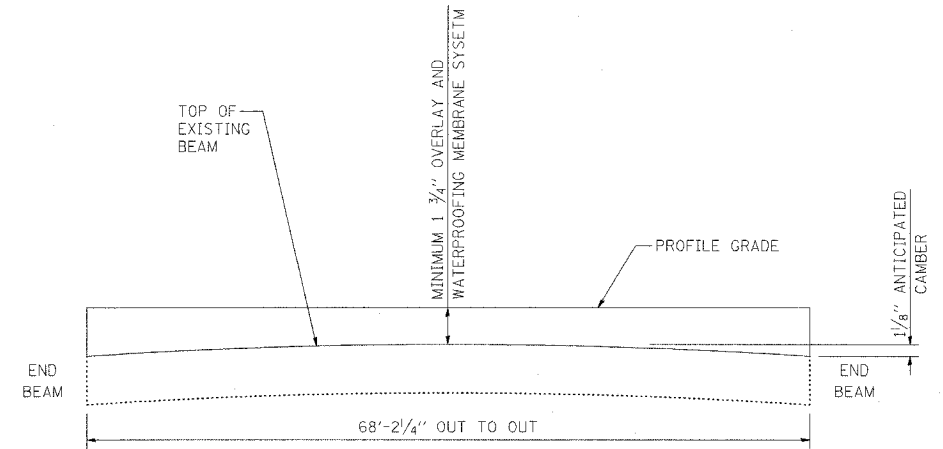
SCALE: VERT.
HORIZ.
DATE

DRAWN BY
CHECKED BY

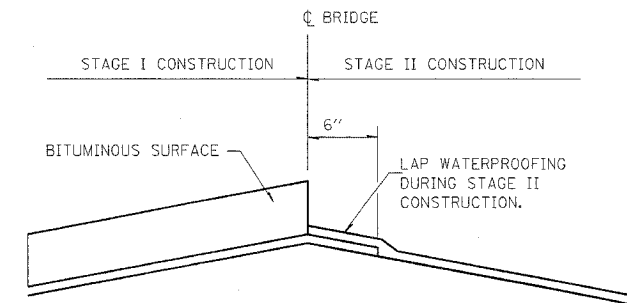
F.A.S. RTE.	SECTION	COUNTY	TOTAL SHEETS	SHEET NO.
1669		COLES	17	8
STA. _____		TO STA. _____		
FED. ROAD DIST. NO. _____		ILLINOIS FED. AID PROJECT		



PLAN VIEW



ANTICIPATED CAMBER DIAGRAM



PROPOSED DETAIL "A"

PLOT DATE = 8/27/2007
 FILE NAME = c:\pcc\mca\74267\ah\tdetail_74267.dgn
 PLOT SCALE = 20.0000 / IN.
 USER NAME = stef@emk

REVISIONS	
NAME	DATE

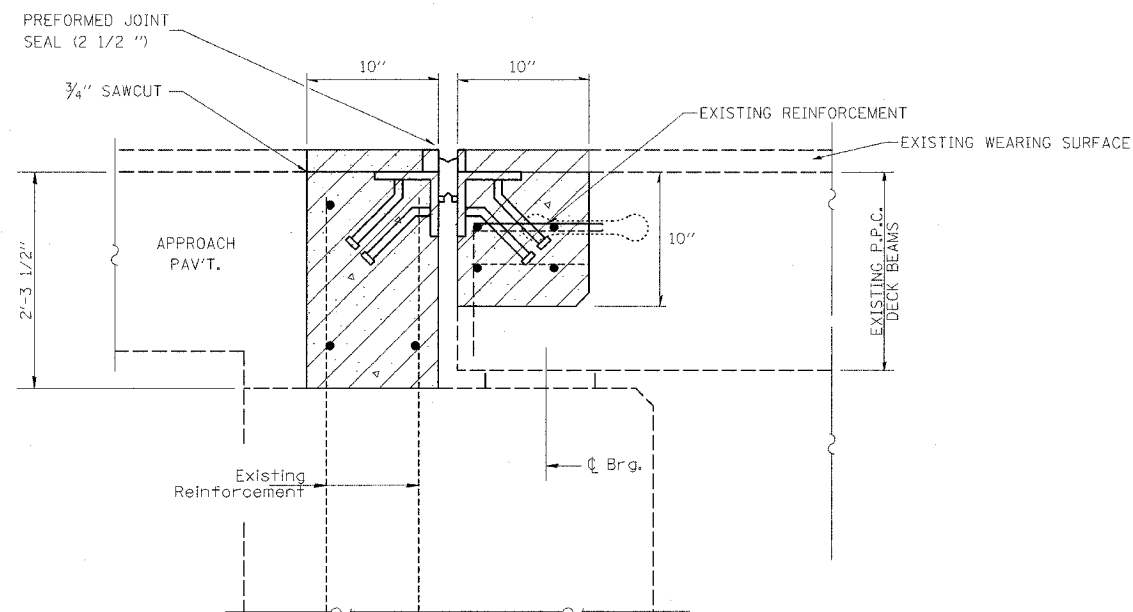
ILLINOIS DEPARTMENT OF TRANSPORTATION

OVERLAY DETAILS
S.N. 015-0069

SCALE: VERT.
 DATE: HORIZ.

DRAWN BY
 CHECKED BY

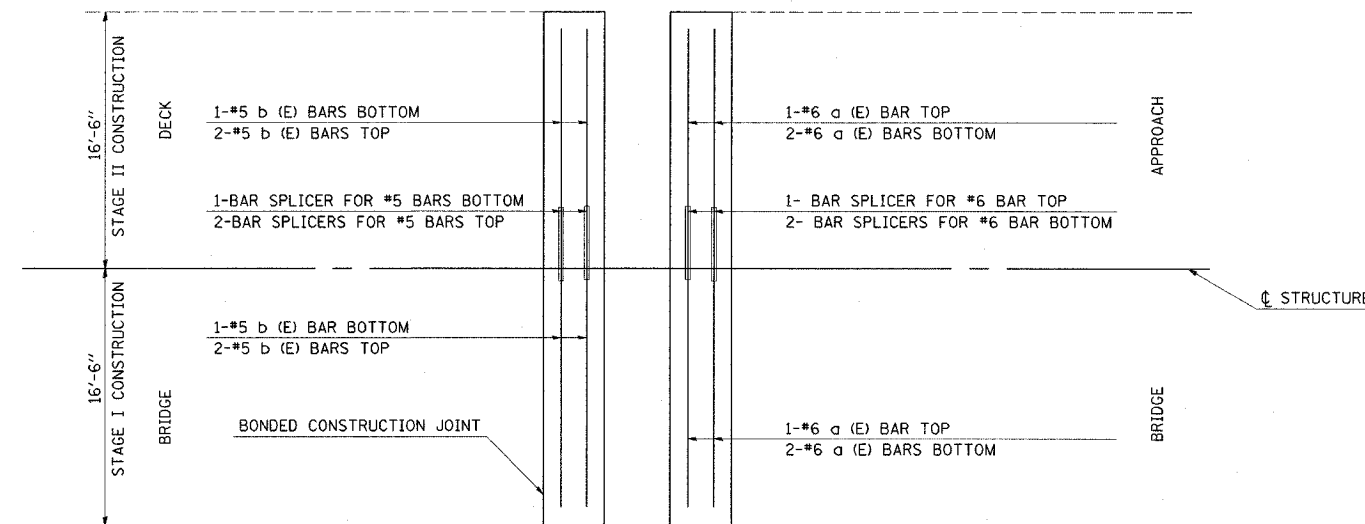
F.A.S. RTE.	SECTION	COUNTY	TOTAL SHEETS	SHEET NO.
1669	COLES		17	9
STA.		TO STA.		
FED. ROAD DIST. NO.		ILLINOIS FED. AID PROJECT		



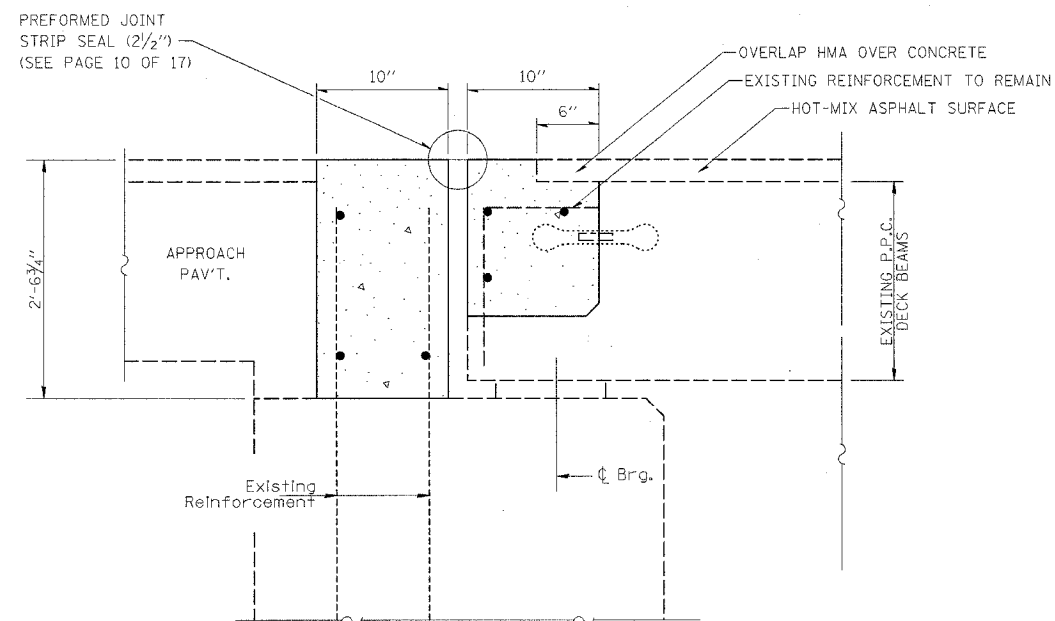
EXISTING EXPANSION JOINTS AT EAST ABUTMENT

CONCRETE REMOVAL

CONTRACTOR MUST EXERCISE EXTREME CARE WHILE, REMOVING CONCRETE AT THIS LOCATION TO INSURE THAT NO DAMAGE IS DONE TO THE PPC DECK BEAMS.



REINFORCEMENT DETAIL
EAST ABUTMENT



PROPOSED EXPANSION JOINTS AT EAST ABUTMENT

CONCRETE SUPERSTRUCTURE

BAR	NUMBER OF BARS		TOTAL	SIZE	LENGTH	SHAPE	
	STAGE I	STAGE II					
a(E)	3	3	6	6	16'-4"	—	
b(E)	3	3	6	5	16'-4"	—	
CONCRETE REMOVAL						CU. YD.	3.1
REINFORCEMENT BARS (EPOXY COATED)						LBS	250
CONCRETE SUPERSTRUCTURES						CU. YD.	3.6

REINFORCEMENT BARS DESIGNATED (E) SHALL BE EPOXY COATED

DATE: 01/27/2007
 FILE NAME: 74267.dwg
 PLOT SCALE: 1/8" = 1'-0"
 USER: staff

REVISIONS	
NAME	DATE

ILLINOIS DEPARTMENT OF TRANSPORTATION
**EXPANSION JOINT
 DETAILS**
S.N. 015-0069
 SCALE: VERT. DATE
 HORIZ. DRAWN BY
 CHECKED BY

F.A.S. RTE.	SECTION	COUNTY	TOTAL SHEETS	SHEET NO.
1669		COLES	17	11
STA.		TO STA.		
FED. ROAD DIST. NO. ILLINOIS FED. AID PROJECT				

NOTES

Bar splicer assemblies shall be of an approved type and shall develop in tension at least 125 percent of the yield strength of the lapped reinforcement bars.
 Splicer rods shall be of minimum 60 ksi yield strength, threaded or coiled full length.
 All reinforcement bars shall be lapped and tied to the splicer rods or dowel bars.
 Bar splicer assemblies shall be epoxy coated according to the requirements for reinforcement bars.
 Other systems of similar design may be submitted to the Engineer for approval. Approval shall be based on certified test results from an approved testing laboratory that the proposed bar splicer assembly satisfies the following requirements:

- ① Minimum Capacity (Tension in kips) = $1.25 \times f_y \times A_l$
- ② Minimum *Pull-out Strength (Tension in kips) = $0.66 \times f_y \times A_l$

Where f_y = Yield strength of lapped reinforcement bars in ksi.
 A_l = Tensile stress area of lapped reinforcement bars.
 * = 28 day concrete

Bar Size to be Spliced	Splicer Rod or Dowel Bar Length	Strength Requirements	
		Min. Capacity kips - tension	Min. Pull-Out Strength kips - tension
#4	1'-8"	14.7	7.9
#5	2'-0"	23.0	12.3
#6	2'-7"	33.1	17.4
#7	3'-5"	45.1	23.8
#8	4'-6"	58.9	31.3
#9	5'-9"	75.0	39.6
#10	7'-3"	95.0	50.3
#11	9'-0"	117.4	61.8

The diameter of this part is the same as the diameter of the bar spliced.

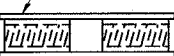
The diameter of this part is equal or larger than the diameter of bar spliced.

ROLLED THREAD DOWEL BAR



**** ONE PIECE**

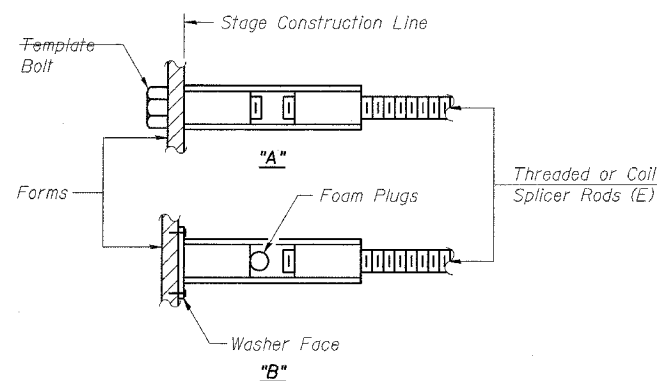
Wire Connector



WELDED SECTIONS

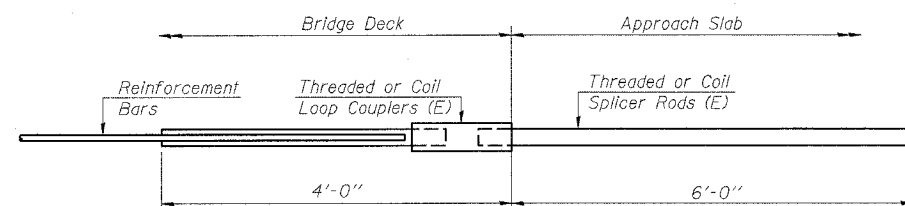
BAR SPLICER ASSEMBLY ALTERNATIVES

** Heavy Hex Nuts conforming to ASTM A 563, Grade C, D or DH may be used.



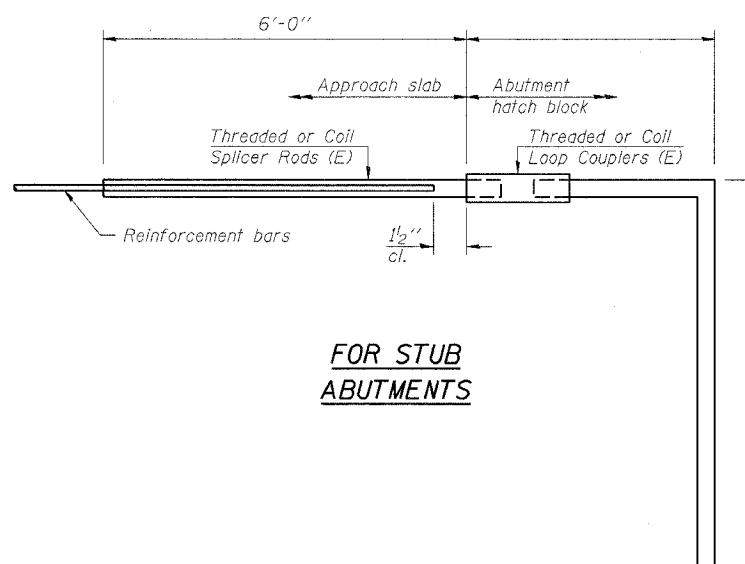
INSTALLATION AND SETTING METHODS

"A" : Set bar splicer assembly by means of a template bolt.
 "B" : Set bar splicer assembly by nailing to wood forms or cementing to steel forms.
 (E) : Indicates epoxy coating.



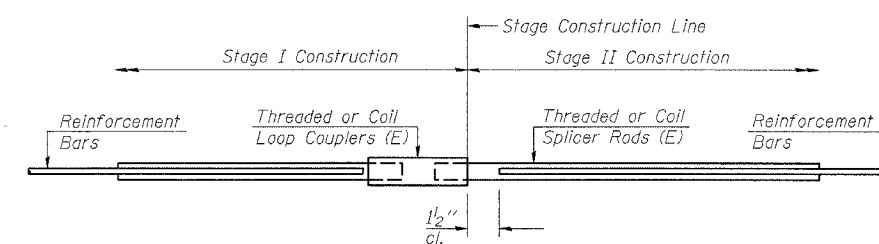
FOR INTEGRAL OR SEMI-INTEGRAL ABUTMENTS

Bar Splicer for #5 bar
Min. Capacity = 23.0 kips - tension
Min. Pull-out Strength = 12.3 kips - tension
No. Required =



FOR STUB ABUTMENTS

Bar Splicer for #5 bar
Min. Capacity = 23.0 kips - tension
Min. Pull-out Strength = 12.3 kips - tension
No. Required =



STANDARD

Bar Size	No. Assemblies Required	Location
#5	3	End of Deck
#6	3	Abut. Blocks

REVISIONS	
NAME	DATE

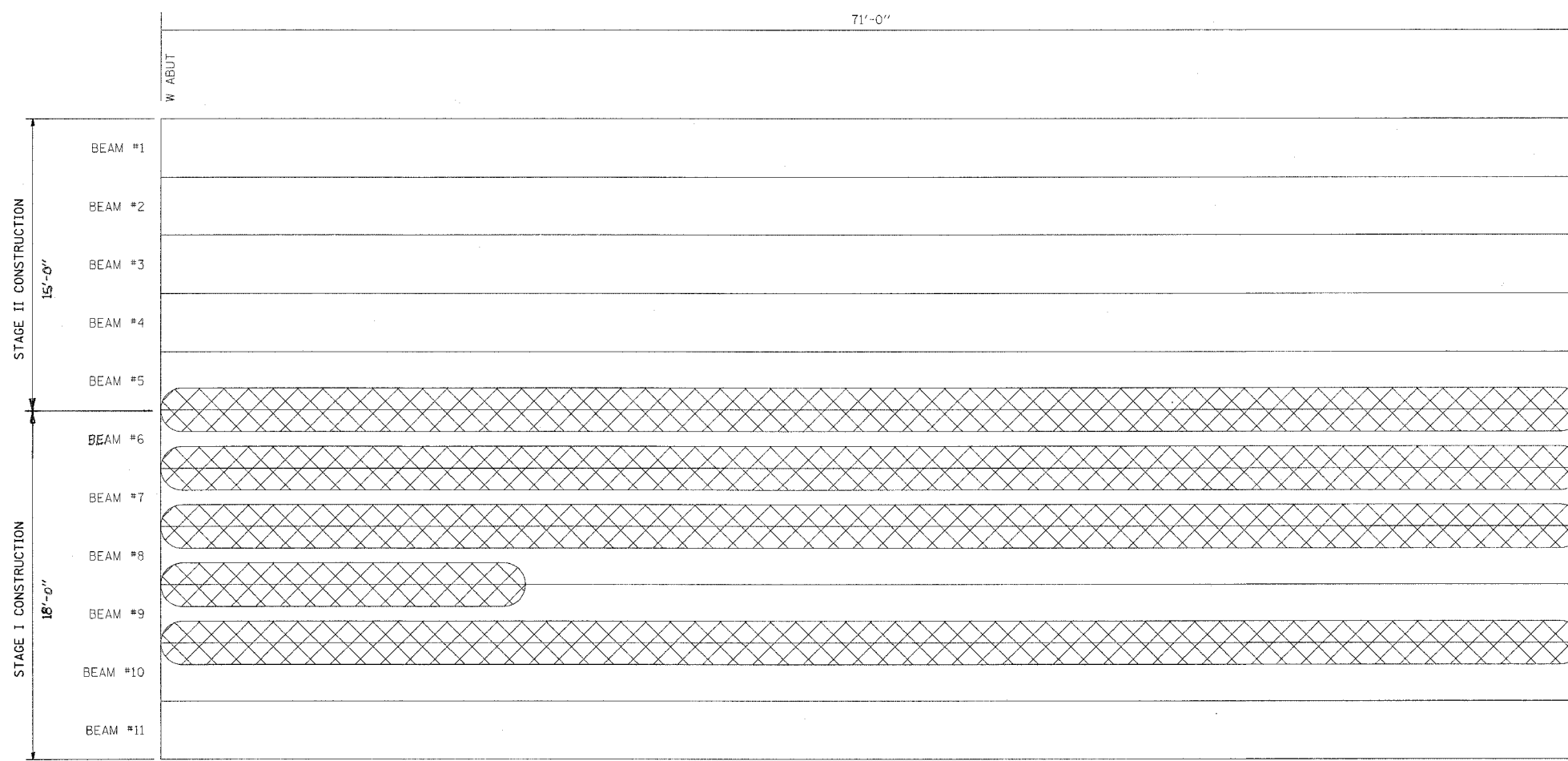
ILLINOIS DEPARTMENT OF TRANSPORTATION

BAR SPLICER ASSEMBLY DETAILS
S.N. 015-0069

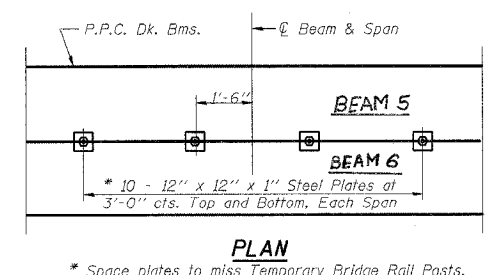
SCALE: VERT. _____
 HORIZ. _____
 DATE _____

DRAWN BY _____
 CHECKED BY _____

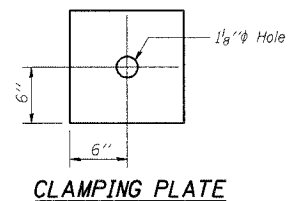
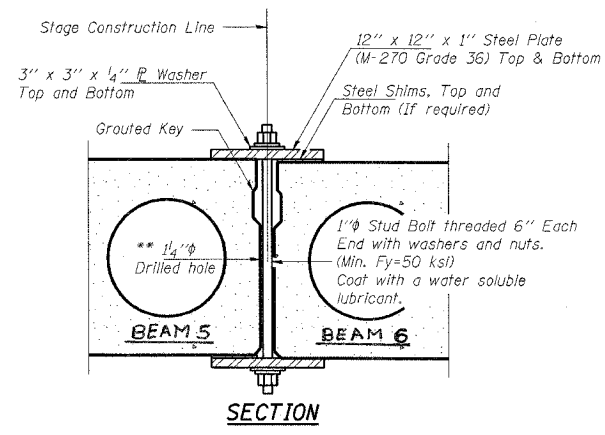
F.A.S. RTE.	SECTION	COUNTY	TOTAL SHEETS	SHEET NO.
1669		COLES	17	12
STA.		TO STA.		
FED. ROAD DIST. NO.		ILLINOIS FED. AID PROJECT		



TOTAL ESTIMATED KEYWAY REPAIR = 304 LIN. FT.



* Space plates to miss Temporary Bridge Rail Posts.



SHEAR KEY CLAMPING DETAILS AT STAGE CONST. JT.

Notes:
See Special Provisions for Stage Construction
Precast Prestressed Concrete Deck Beams.
Cost is included with Keyway Repair.

REVISIONS	
NAME	DATE

ILLINOIS DEPARTMENT OF TRANSPORTATION

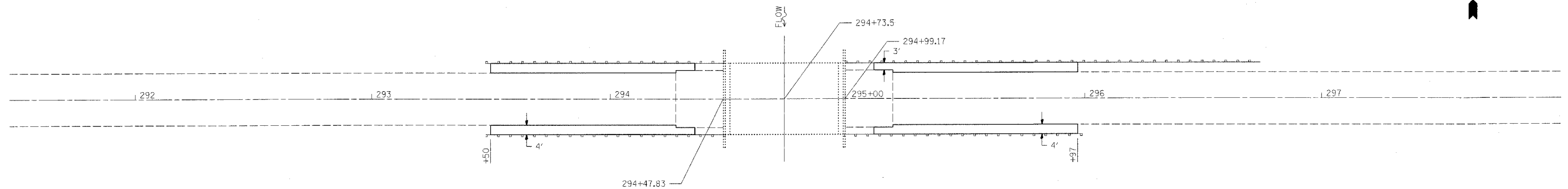
KEYWAY REPAIR
S.N. 015-0069

SCALE: VERT. _____
HORIZ. _____

DATE _____ DRAWN BY _____
CHECKED BY _____

PLOT DATE = 8/27/2007
 PLOT SCALE = 20/1000 = 1/50 IN.
 USER NAME = staffamk

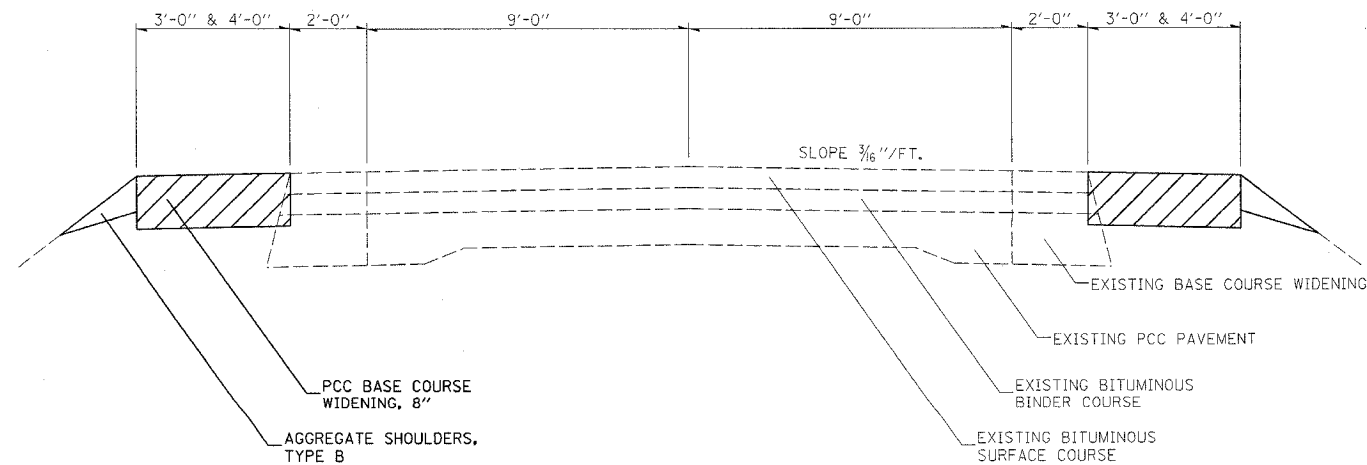
F.A.S. RTE.	SECTION	COUNTY	TOTAL SHEETS	SHEET NO.
1669		COLES	17	13
STA.		TO STA.		
FED. ROAD DIST. NO.	ILLINOIS	FED. AID PROJECT		



PCC BASE COURSE WIDENING

LT STA	293+50	TO STA	294+36	=	40.95 Y.
LT STA	295+11	TO STA	295+97	=	40.95 Y.
RT STA	293+50	TO STA	294+36	=	40.95 Y.
RT STA	295+11	TO STA	295+97	=	40.95 Y.
				TOTAL	= 164.05 Y.

AGGREGATE SHOULDERS TYPE B = 8.0 TONS



TYPICAL ROADWAY CROSS SECTION

REVISIONS	
NAME	DATE

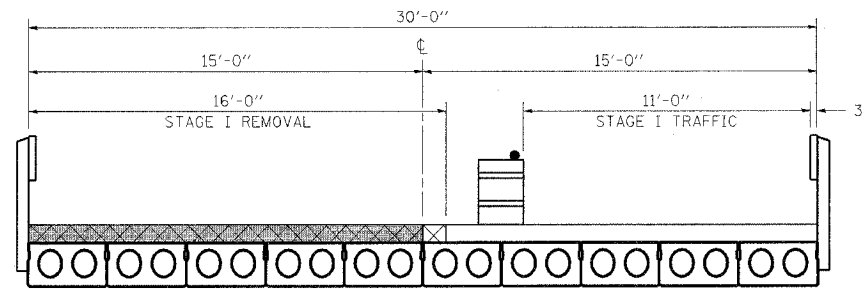
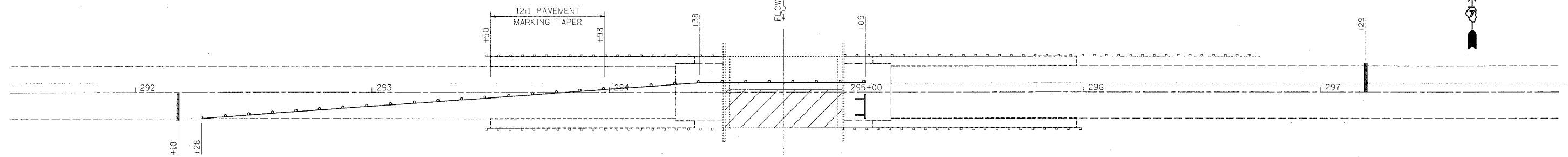
ILLINOIS DEPARTMENT OF TRANSPORTATION

**BASE COURSE WIDENING
S.N. 015-0070**

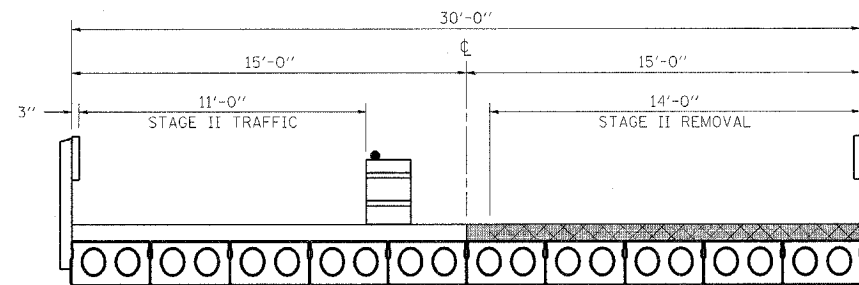
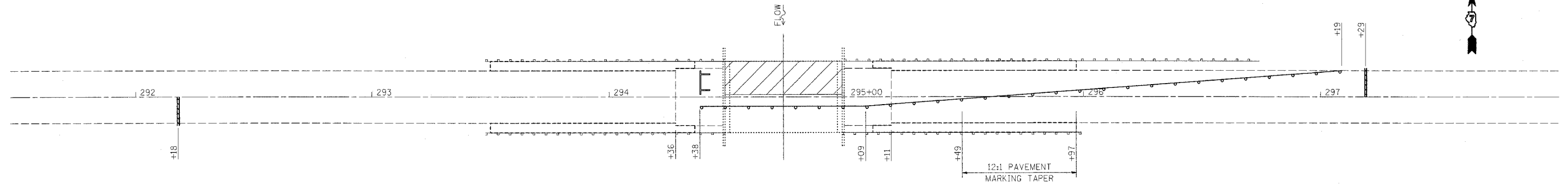
SCALE: VERT.
HORIZ.
DATE

DRAWN BY
CHECKED BY

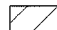



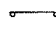
F.A.S. RTE.	SECTION	COUNTY	TOTAL SHEETS	SHEET NO.
1669		COLES	17	14
STA.		TO STA.		
FED. ROAD DIST. NO.	ILLINOIS	FED. AID PROJECT		



STAGE I CONSTRUCTION
LOOKING WEST



STAGE II CONSTRUCTION
LOOKING WEST

-  WORK AREA
-  BRIDGE WEARING SURFACE REMOVAL
-  BITUMINOUS WEARING SURFACE
-  TYPE III BARRICADE WITH FLASHING LIGHTS
-  BARRICADE OR DRUM WITH STEADY BURN LIGHT

REVISIONS	
NAME	DATE

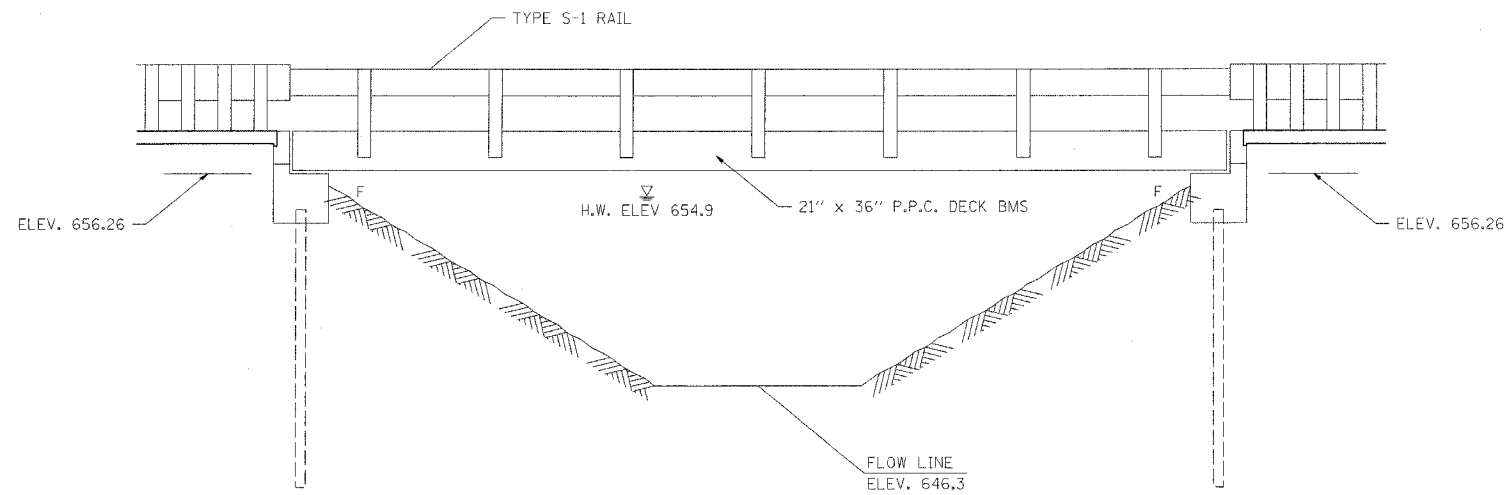
ILLINOIS DEPARTMENT OF TRANSPORTATION

TRAFFIC CONTROL
S.N. 015-0070

SCALE: VERT.
HORIZ.
DATE

DRAWN BY
CHECKED BY

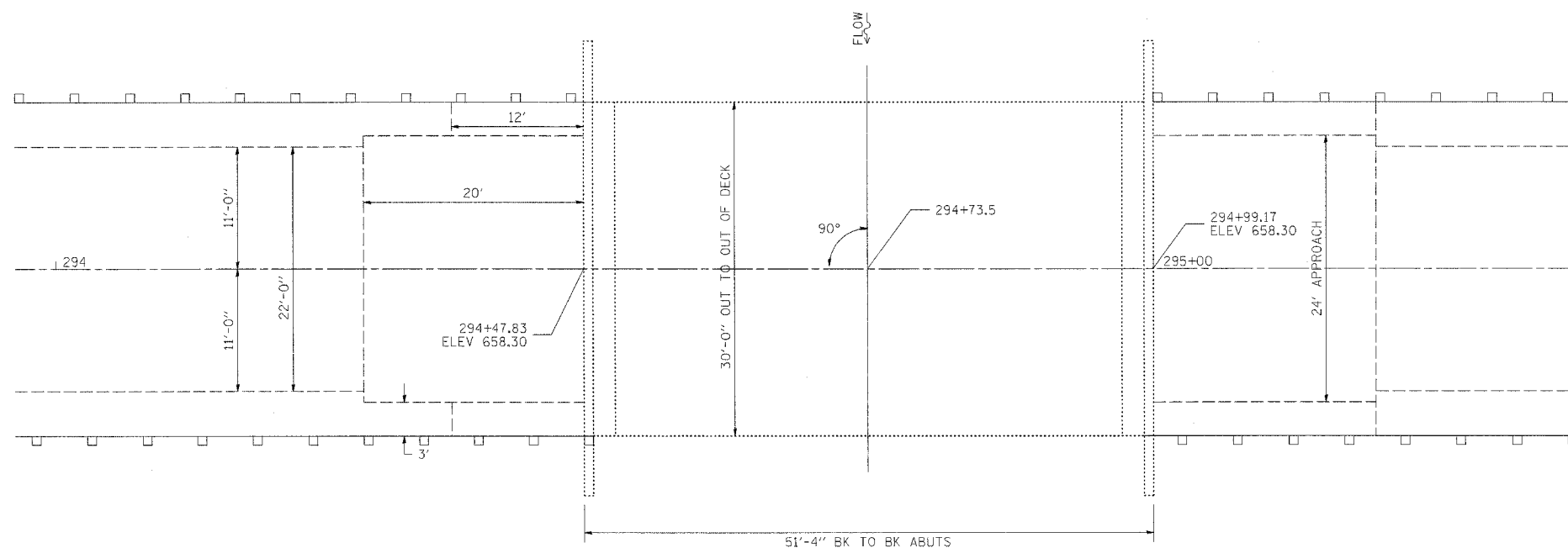
F.A.S. RTE.	SECTION	COUNTY	TOTAL SHEETS	SHEET NO.
1669		COLES	17	15
STA.		TO STA.		
FED. ROAD DIST. NO.		ILLINOIS FED. AID PROJECT		



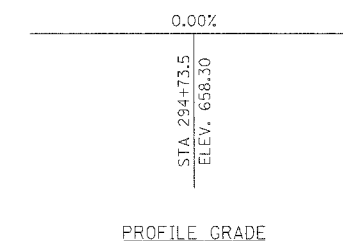
ELEVATION

BILL OF MATERIALS

ITEM	UNIT	QUANTITY
Hot-Mix Asphalt Surface Removal	SQ YD	171
Waterproofing Membrane System	SQ YD	171
Hot-Mix Asphalt Surface Course, Mixture C, N70	TON	23
Keyway Repair	FOOT	180
Portland Cement Mortar Fairing Course	FOOT	180
Bearing Pad Adjustment	EACH	20



PLAN



PROFILE GRADE

REVISIONS	
NAME	DATE

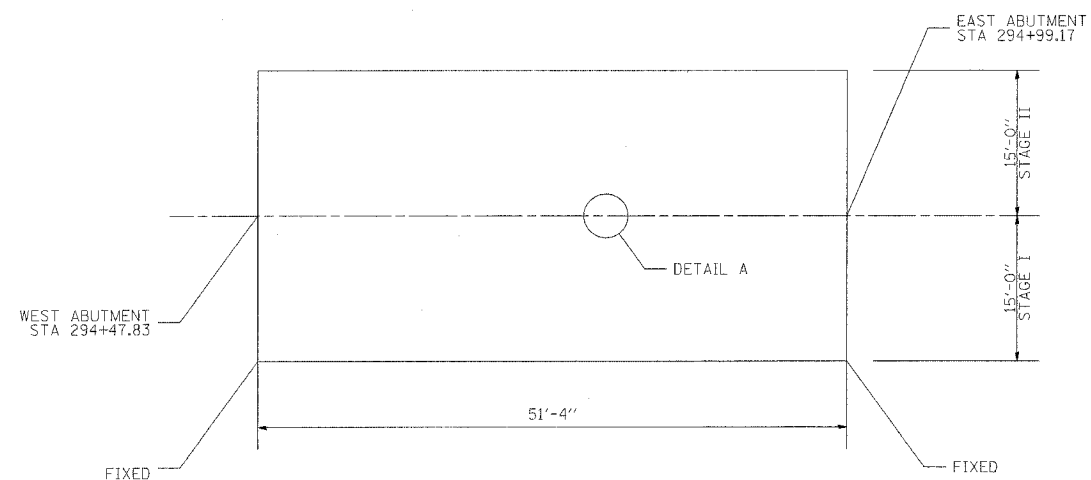
ILLINOIS DEPARTMENT OF TRANSPORTATION

**GENERAL PLAN
& ELEVATION
S.N. 015-0070**

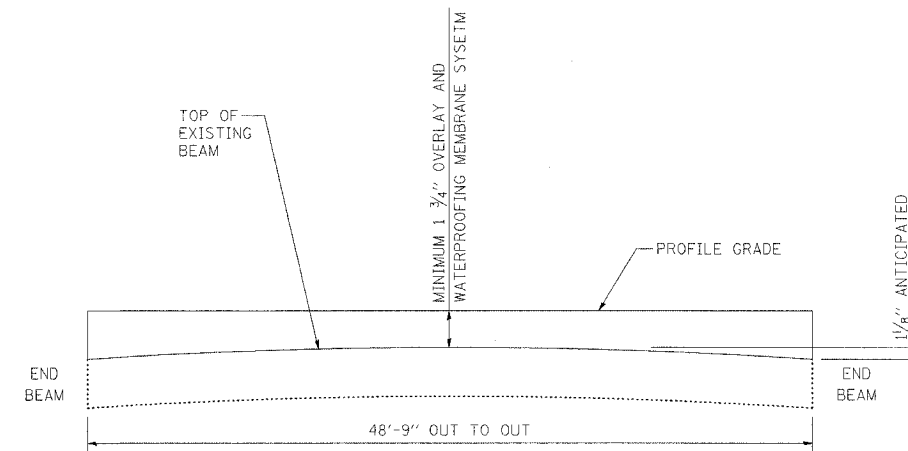
SCALE: VERT.
HORIZ.
DATE

DRAWN BY
CHECKED BY

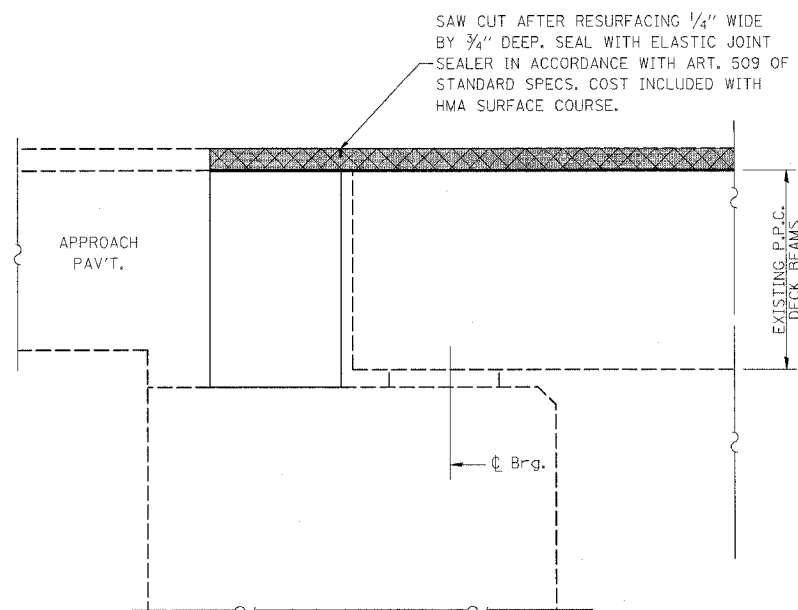
F.A.S. RTE.	SECTION	COUNTY	TOTAL SHEETS	SHEET NO.
1669		COLES	17	16
STA. _____		TO STA. _____		
FED. ROAD DIST. NO. _____		ILLINOIS FED. AID PROJECT		



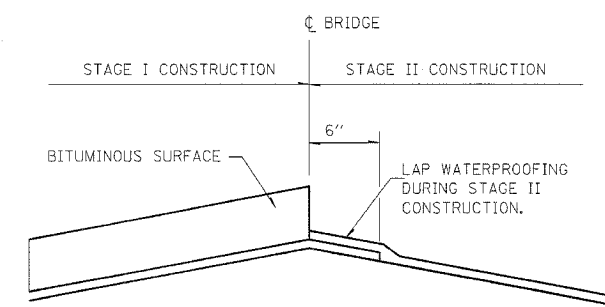
PLAN VIEW



ANTICIPATED CAMBER DIAGRAM



JOINT DETAILS



PROPOSED DETAIL "A"

- BRIDGE WEARING SURFACE REMOVAL
- WATERPROOFING MEMBRANE SYSTEM & HMA OVERLAY

REVISIONS	
NAME	DATE

ILLINOIS DEPARTMENT OF TRANSPORTATION

OVERLAY DETAILS
S.N. 015-0070

SCALE: VERT. _____
HORIZ. _____
DATE _____

DRAWN BY _____
CHECKED BY _____

