

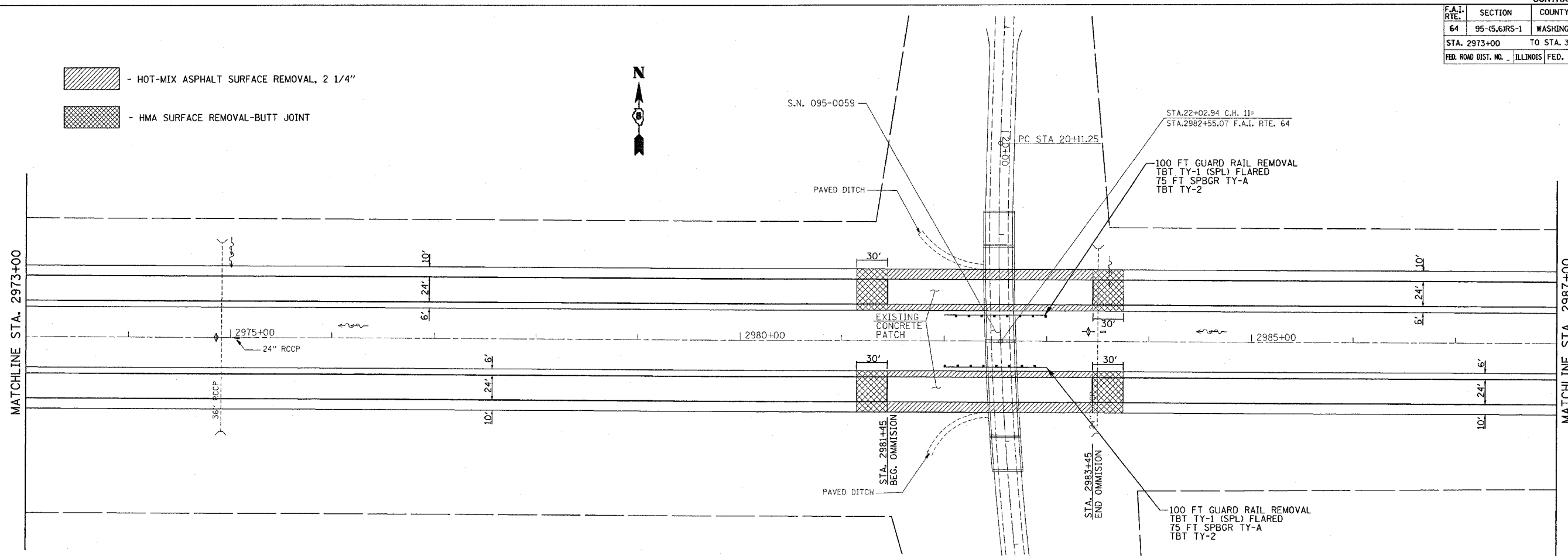
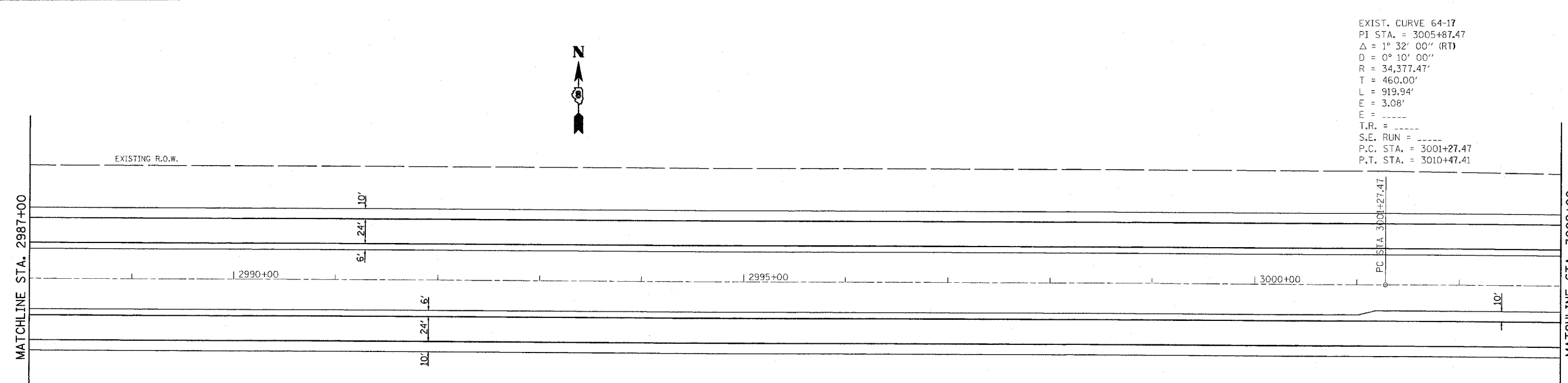


F.A.I. RTE.	SECTION	COUNTY	TOTAL SHEETS	SHEET NO.
64	95-(5,6)RS-1	WASHINGTON	83	18
STA. 2973+00		TO STA. 3002+00		
FED. ROAD DIST. NO.		ILLINOIS FED. AID PROJECT		

-  - HOT-MIX ASPHALT SURFACE REMOVAL, 2 1/4"
-  - HMA SURFACE REMOVAL-BUTT JOINT



EXIST. CURVE 64-17  
 PI STA. = 3005+87.47  
 $\Delta = 1^\circ 32' 00''$  (RT)  
 $D = 0^\circ 10' 00''$   
 $R = 34,377.47'$   
 $T = 460.00'$   
 $L = 919.94'$   
 $E = 3.08'$   
 $E = \dots$   
 $T.R. = \dots$   
 $S.E. RUN = \dots$   
 $P.C. STA. = 3001+27.47$   
 $P.T. STA. = 3010+47.41$



REVISIONS	
NAME	DATE

ILLINOIS DEPARTMENT OF TRANSPORTATION  
**PLAN VIEW**  
 FAI RTE. 64  
 SECTION 95-(5,6)RS-1  
 WASHINGTON COUNTY

SCALE: VERT. \_\_\_\_\_  
 HORIZ. \_\_\_\_\_  
 DATE \_\_\_\_\_ DRAWN BY \_\_\_\_\_  
 CHECKED BY \_\_\_\_\_

PLOT DATE = 8/21/2007  
 FILE NAME = \\s01r207\plan\plan\01207.dgn  
 PLOT SCALE = 50,000 / IN.  
 REFERENCE = #REF#