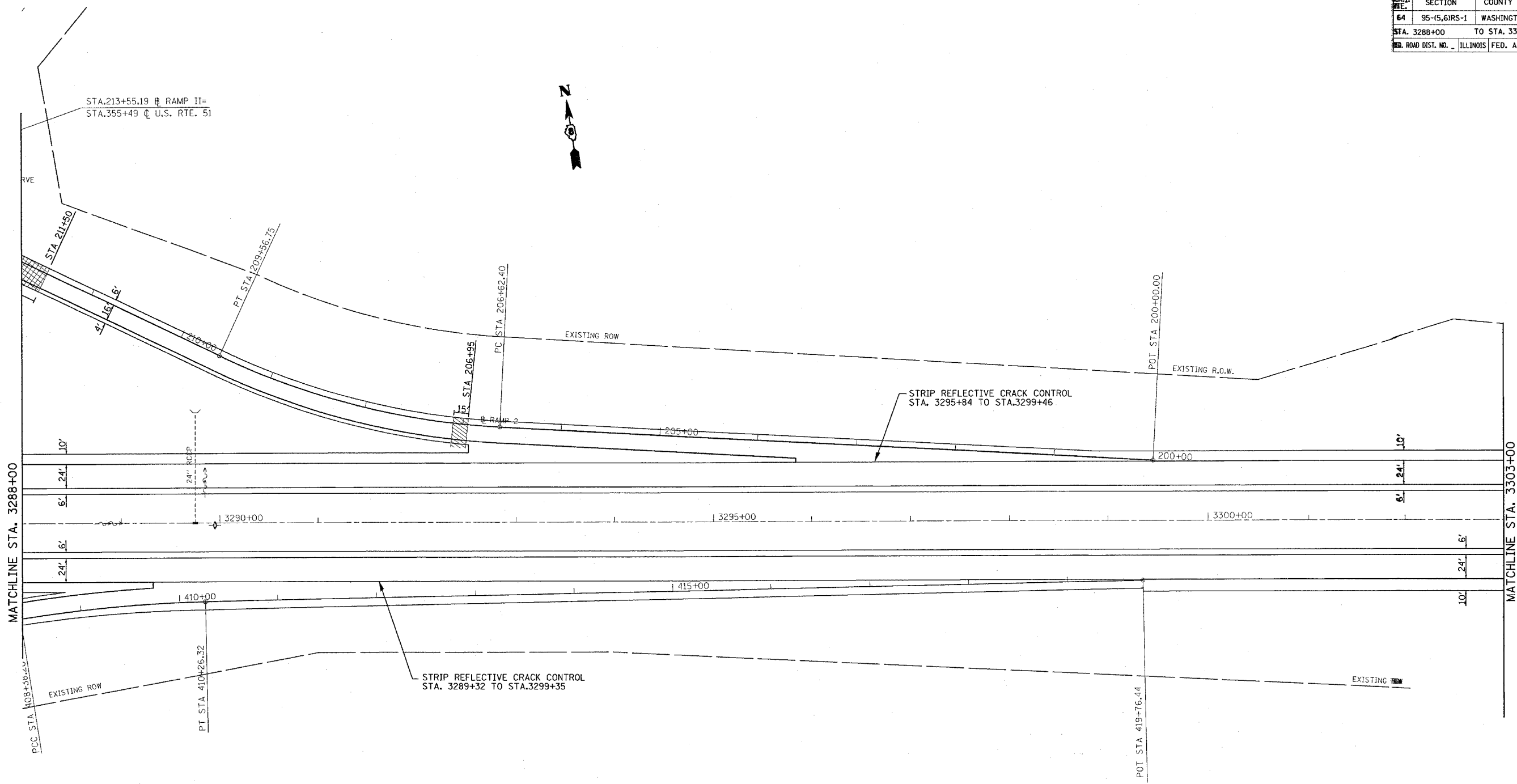


E.A.I. SHEET	SECTION	COUNTY	TOTAL SHEETS	SHEET NO.
64	95-(5,6)RS-1	WASHINGTON	83	29
STA. 3288+00		TO STA. 3303+00		
RD. ROAD DIST. NO. ILLINOIS FED. AID PROJECT				



- HMA SURFACE REMOVAL-BUTT JOINT
- SURFACE REMOVAL, VARIABLE DEPTH (SEE DETAIL, SHEET 81)

REVISIONS	
NAME	DATE

ILLINOIS DEPARTMENT OF TRANSPORTATION
PLAN VIEW
 FAI RTE. 64
 SECTION 95-(5,6)RS-1
 WASHINGTON COUNTY

SCALE: VERT. _____
 HORIZ. _____
 DATE _____
 DRAWN BY _____
 CHECKED BY _____

PLOT DATE = 8/21/2007
 PLOT NAME = I:\Projects\76A39\Drawings\76A39-01297.dwg
 PLOT SCALE = 80.000 / IN.
 REFERENCE = #REF#