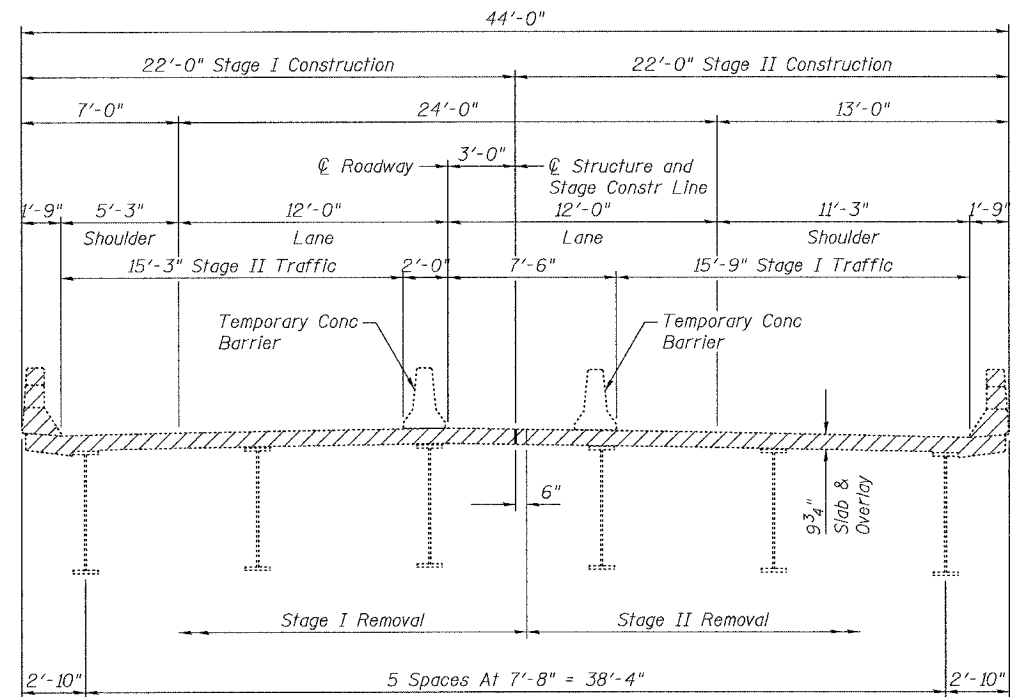
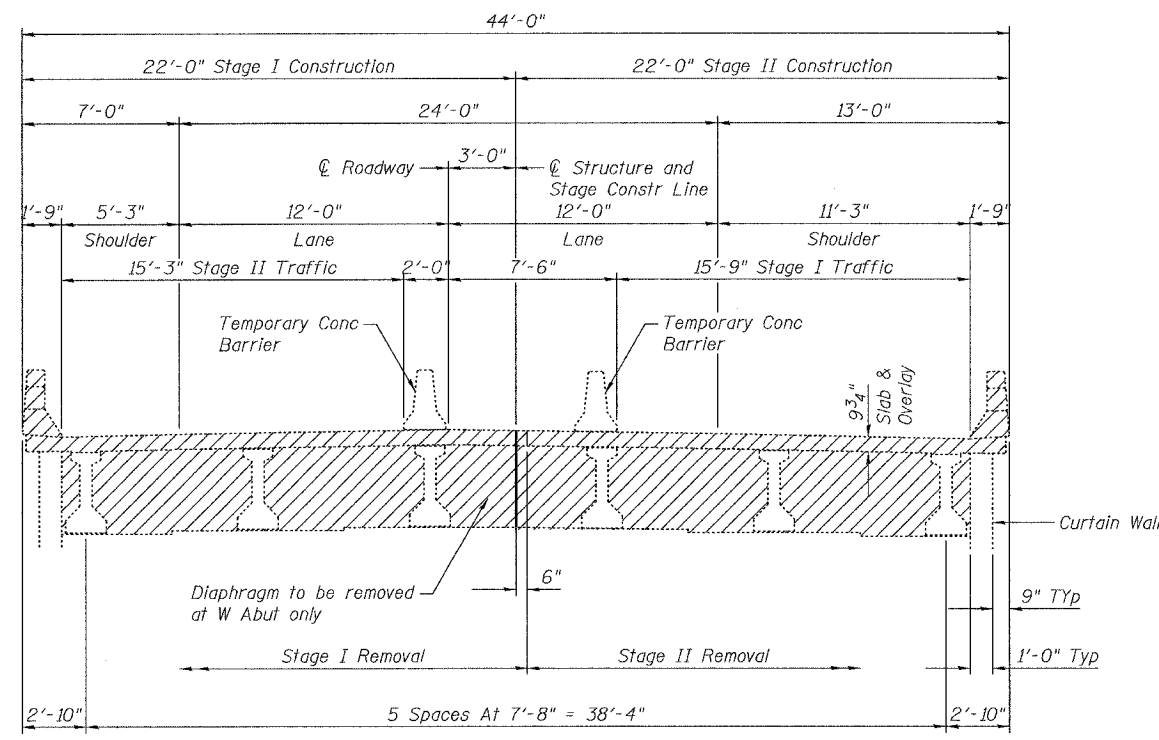


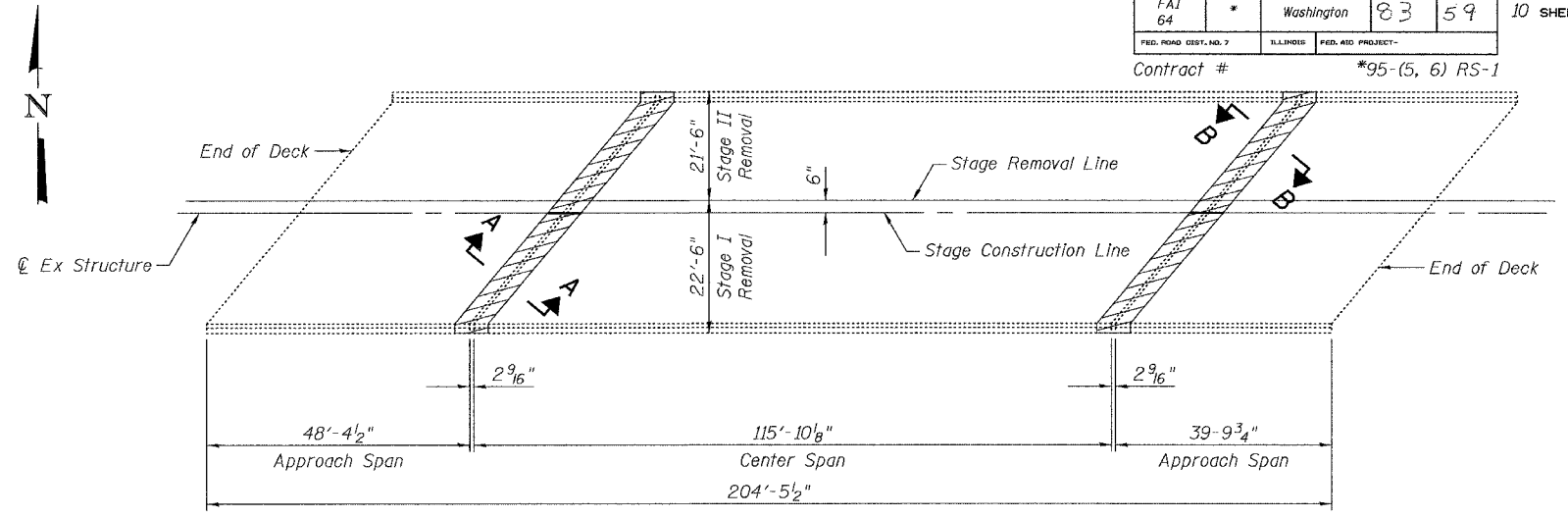
ROUTE NO.	SECTION	COUNTY	TOTAL SHEETS	SHEET NO.	SHEET NO. 2 10 SHEETS
FAI 64		Washington	83	59	
FED. ROAD DIST. NO. 7	ILLINOIS	FED. AID PROJECT	Contract # *95-(5, 6) RS-1		



CROSS SECTION THRU CENTER SPAN AT END OF DECK
(Looking West - WB Bridge)
(Looking East - EB Bridge)

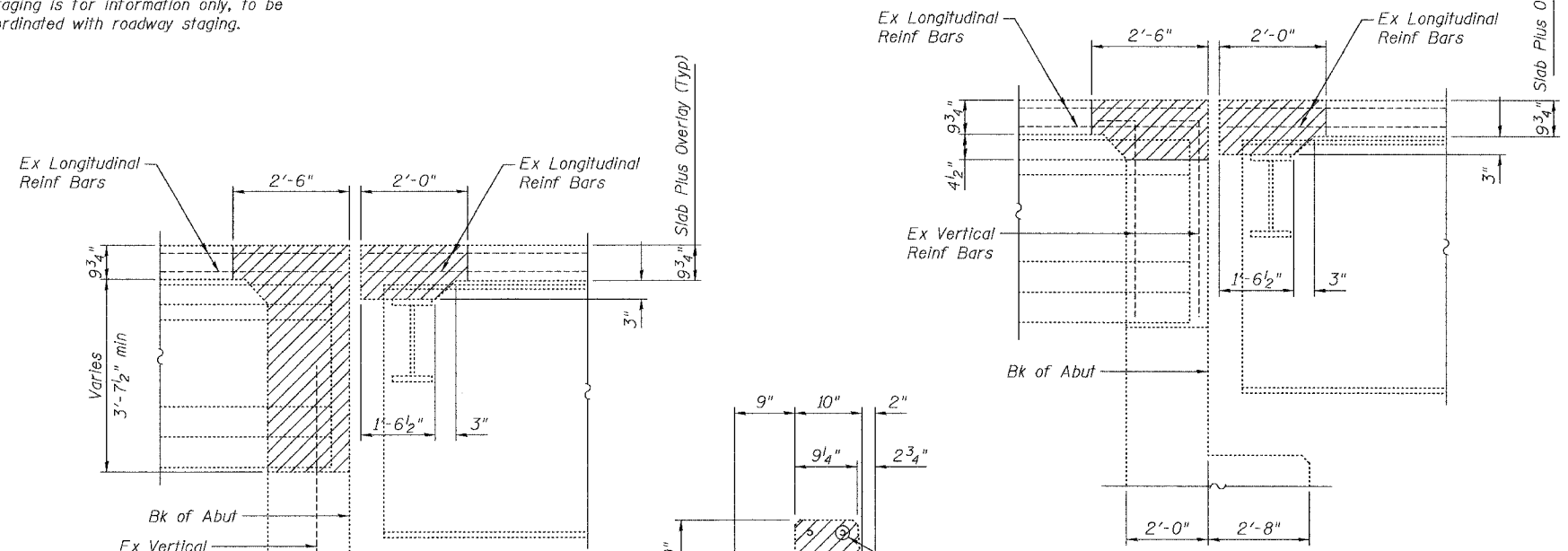


CROSS SECTION THRU APPROACH SLAB AT DIAPHRAGM
(Looking West - WB Bridge)
(Looking East - EB Bridge)



PLAN
(Showing Concrete Removal)
(Staging for WB Structure, EB is Opposite)

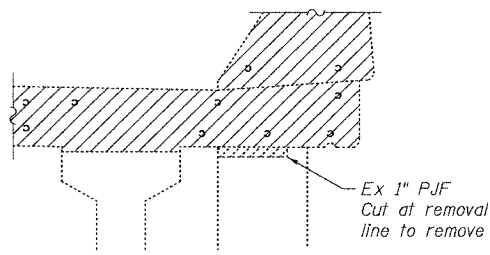
Note:
Staging is for information only, to be coordinated with roadway staging.



SECTION A-A
(dim at right angles)

SECTION B-B
(dim at right angles)

Notes:
Extreme care is required for Concrete Removal around the PPC I-Beams so as to avoid damage to the beam.
Hatched areas indicate "Concrete Removal".
Existing Longitudinal and vertical reinforcement bars extending into the new construction shall be cleaned, straightened and incorporated into the new construction. Any reinforcement bars damaged during concrete removal shall be replaced with an approved bar splicer or anchorage system. Cost included with "Concrete Removal".



DETAIL A
(Curb on Approach Span)

CURB SECTION MAIN SPAN
(Approach similar except watertable See Detail A)

PLT DATE = 08/21/2007
PLOT SCALE = 1/8"=1'-0"
USER NAME = TFC

ILLINOIS DEPARTMENT OF TRANSPORTATION	
SHEET TITLE STAGE CONSTRUCTION AND CONCRETE REMOVAL	
PROJECT F.A.I. 64 OVER US ROUTE 51 SECTION 95-(5, 6) RS-1 WASHINGTON COUNTY STATION 3283+58.83 SN 095-0063 (E.B.) & 095-0064 (W.B.)	PROJECT NO. 06001-6 DATE 8/21/07 DRAWN BY CFC CHECKED BY MCB DRAWING NO.
COOMBE-BLOXDORF P.C. Engineers / Land Surveyors Springfield, Illinois Design Firm License No. 184-002703	
2 OF 10 SHTS	