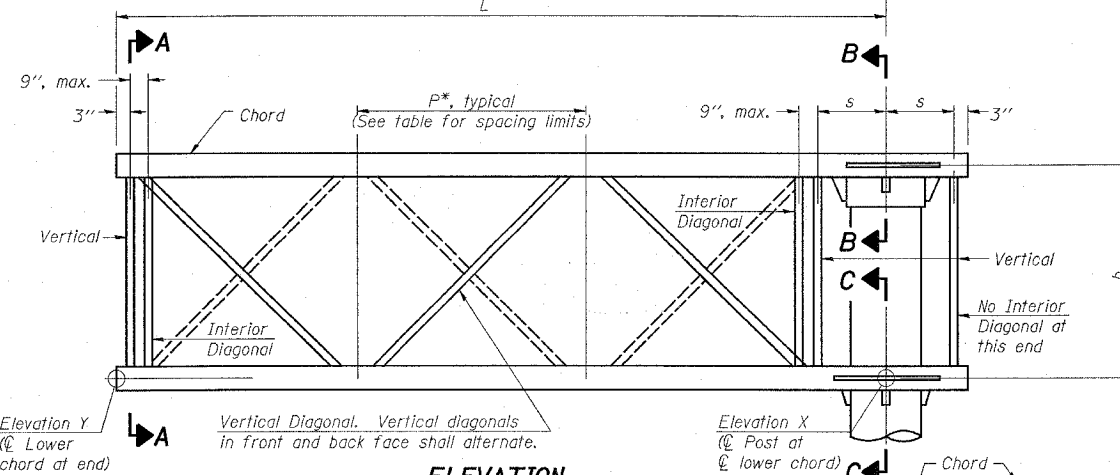
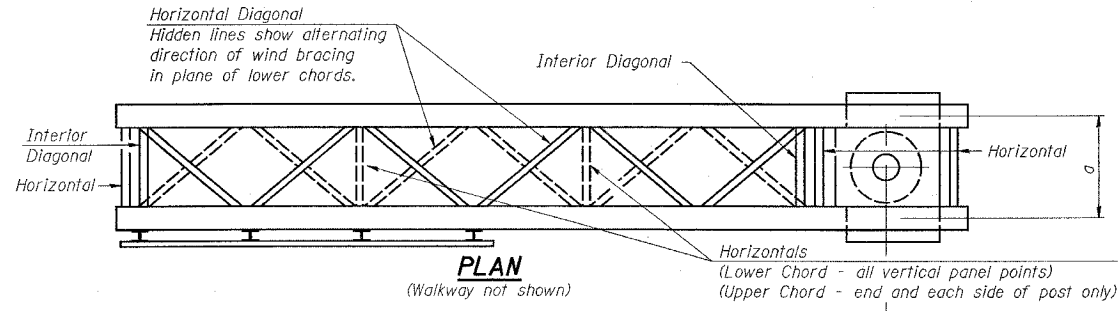
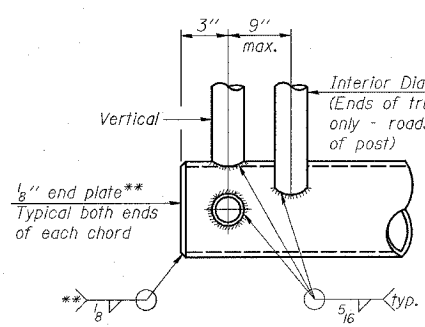


F.A.I. RTE.	SECTION	COUNTY	TOTAL SHEETS	SHEET NO.
64	95-(5,6)RS-1	WASHINGTON	83	71
STA. _____		TO STA. _____		
FED. ROAD DIST. NO. _____		ILLINOIS FED. AID PROJECT		

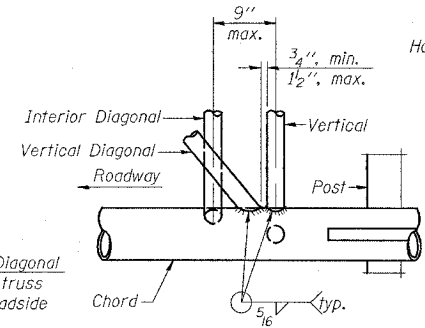


TYPICAL TRUSS UNIT
 For Section B-B and Section C-C, see Base Sheet OSC-A-3.

Note: There are twice as many horizontal diagonals as there are vertical diagonals.



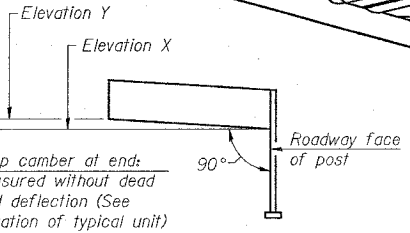
CANTILEVER END JOINT DETAIL
 ** Contractor may alternatively use standard aluminum drive-fit cap to close ends.



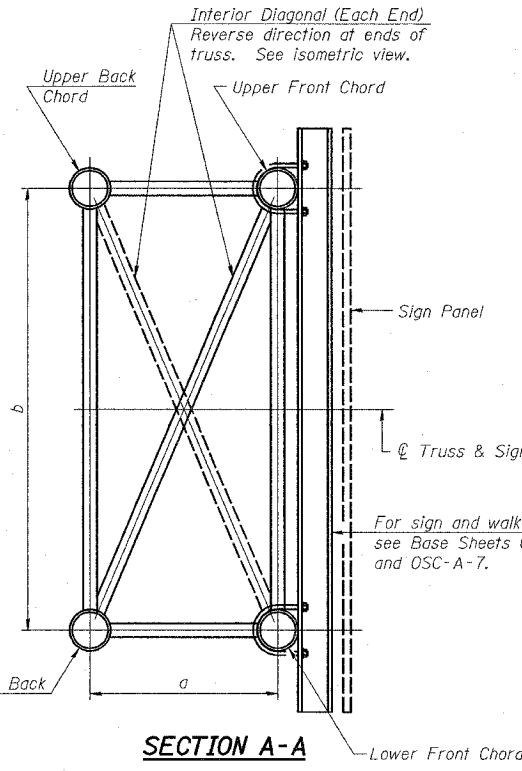
POST END JOINT DETAIL

SHOP CAMBER TABLE

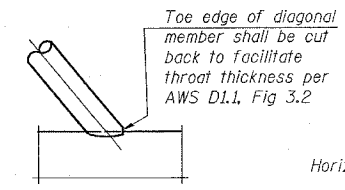
Unit Length (L)	Shop Camber at End
15'	1 1/2"
16'-17'	1 3/4"
18'-20'	2"
21'-22'	2 1/4"
23'-25'	2 1/2"
26'-27'	2 3/4"
28'-30'	3"
31'-32'	3 1/4"
33'-35'	3 1/2"
36'-37'	4"
38'-40'	4 1/2"



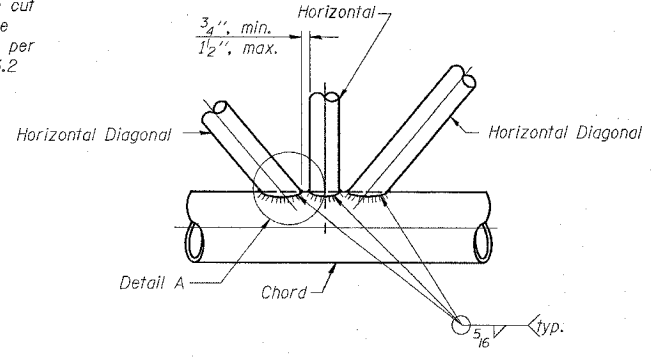
CAMBER DIAGRAM
 (For Fabrication Only)



SECTION A-A

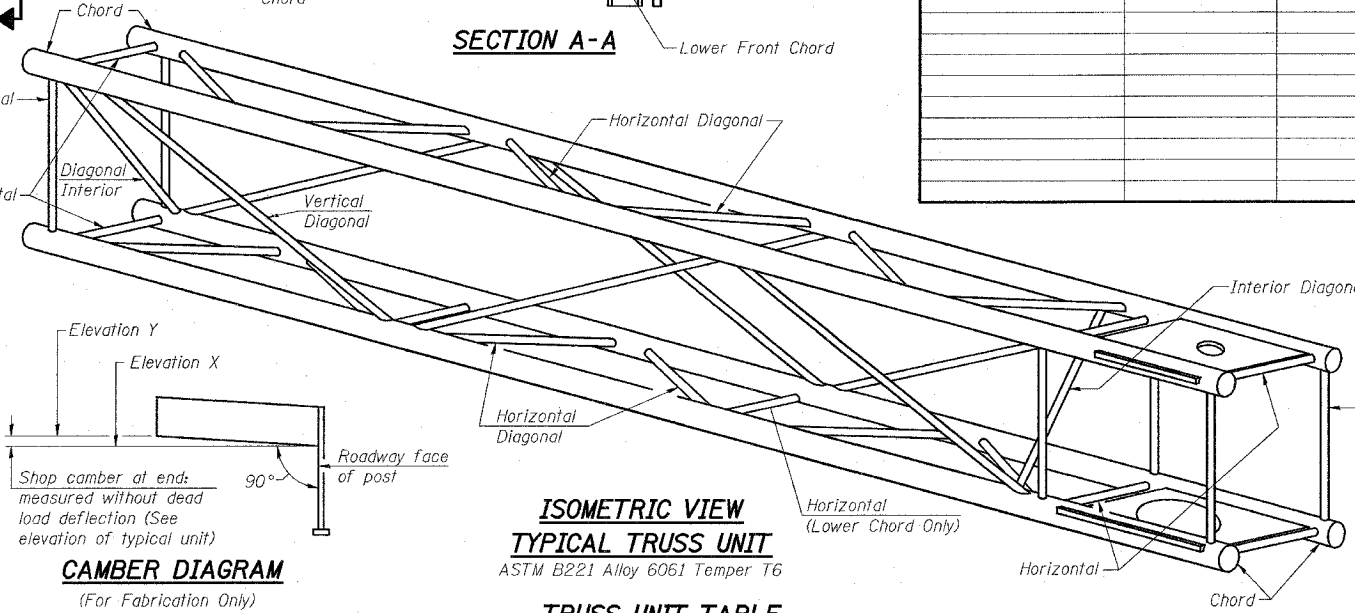


DETAIL A



TRUSS INTERIOR JOINT DETAIL

Structure Number	Station	Truss Type	Design Length (L)	Number of Panels Per Unit	Panel Length (P)*
8C0951064R060.6	3267+10	III-C-A	32'-0"	6	5'-0"



ISOMETRIC VIEW TYPICAL TRUSS UNIT
 ASTM B221 Alloy 6061 Temper T6

TRUSS UNIT TABLE

Truss Type	Dimension "a"	Dimension "b"	Dimension "s"	Limits for Panel Spacing (P)*	Up. & Low. Chord O.D. Wall		Verticals, Horizontals, Vertical, Horizontal, and Interior Diagonals O.D. Wall	
					5"	5/16"	2 1/2"	5/16"
I-C-A	24"	54"	16"	36" min. to 48" max.	5"	5/16"	2 1/2"	5/16"
II-C-A	36"	66"	21"	42" min. to 54" max.	6 1/2"	5/16"	3 1/4"	5/16"
III-C-A (35' Max.)	36"	84"	21"	48" min. to 66" max.	7"	3/8"	3 1/2"	3/8"
III-C-A (>35' to 40')	36"	84"	21"	48" min. to 66" max.	8"	3/8"	3 1/2"	3/8"

*P = (L - s - 3") / # Panels

NUMBER	REVISION	DATE

CANTILEVER SIGN STRUCTURES TRUSS DETAILS ALUMINUM TRUSS & STEEL POST

FAI ROUTE 64 SECTION 95-(5,6)RS-1 WASHINGTON COUNTY

PLOT DATE = 6/21/2007
 FILE NAME = c:\pwworkspace\ed1207\aluminum\osc-a-2.dgn
 USER = danielm...
 USER HOME = c:\home\danielm...