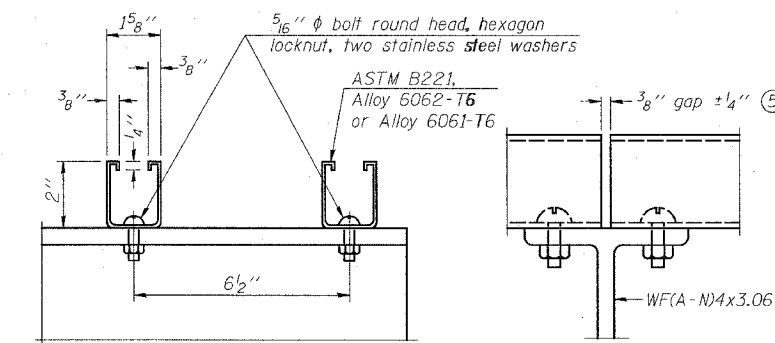
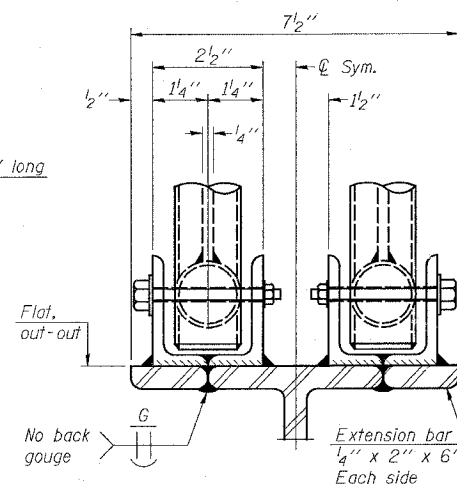
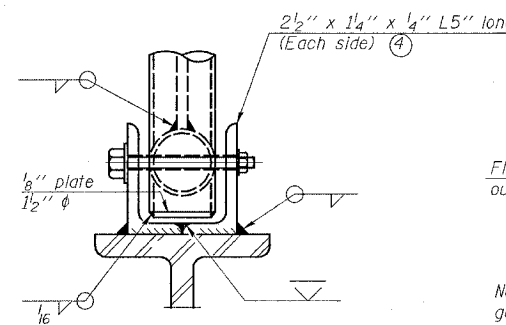
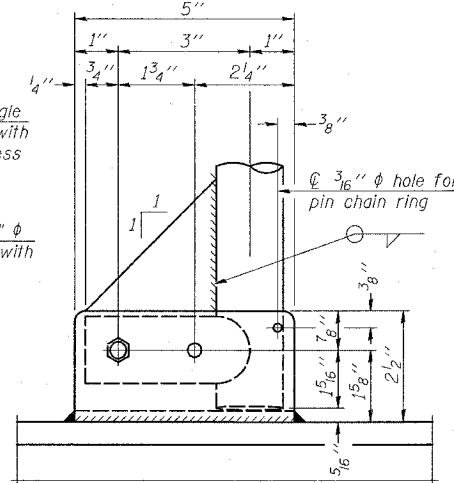
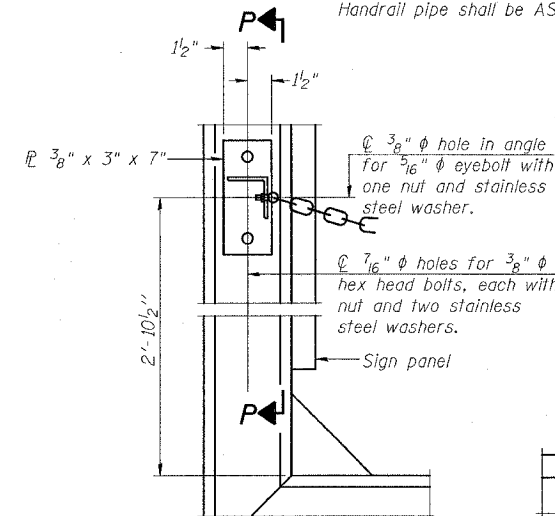
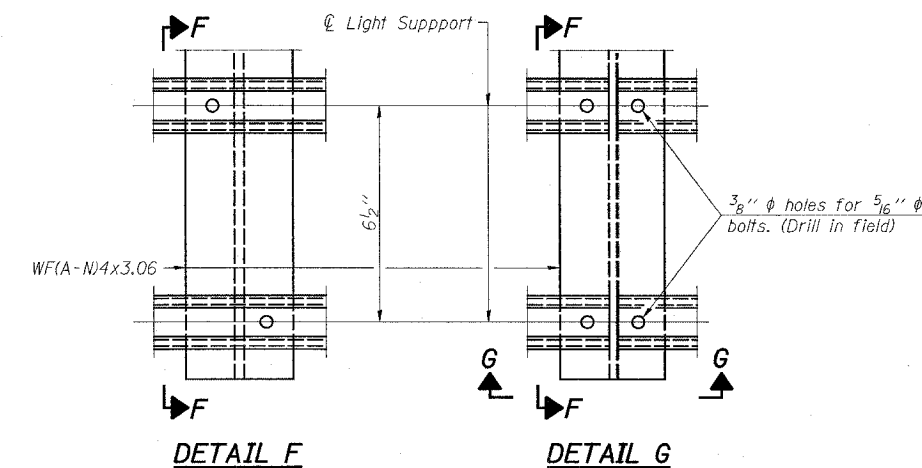


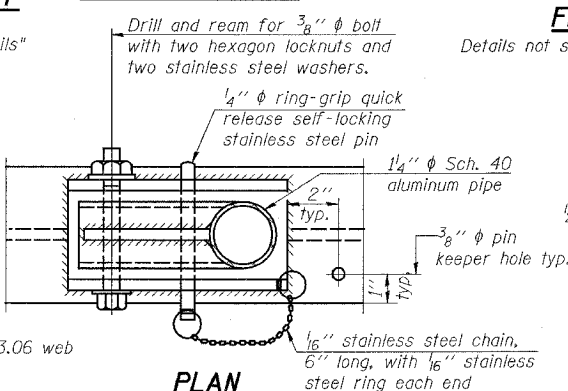
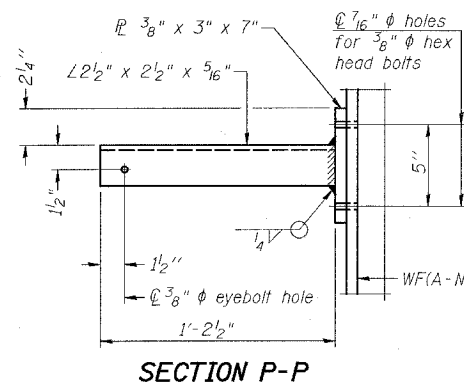
**HANDRAIL DETAILS**

- Install standard force-fit end caps or weld  $\frac{1}{8}$ " end plates with  $\frac{1}{8}$ " c.f.w. and grind smooth. (All rail ends)
- Horizontal handrail member shall be continuous thru fitting. Provide  $\frac{7}{16}$ " hole in fitting for  $\frac{3}{8}$ " bolt. Field drill  $\frac{7}{16}$ " hole in horizontal rail member. Provide locknut and two stainless steel washers for bolt. (Use  $\frac{5}{16}$ " eyebolts in  $\frac{7}{16}$ " holes on top rail at ends only.)

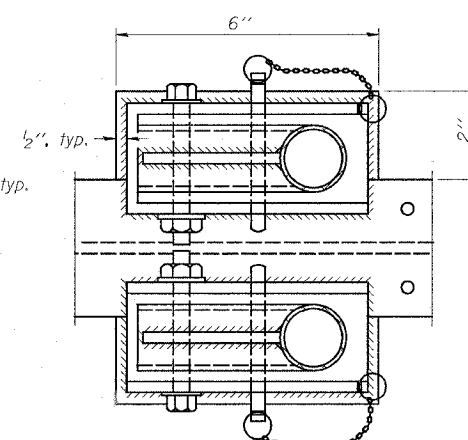


**LIGHTING FIXTURE MOUNTS (IF REQUIRED)**

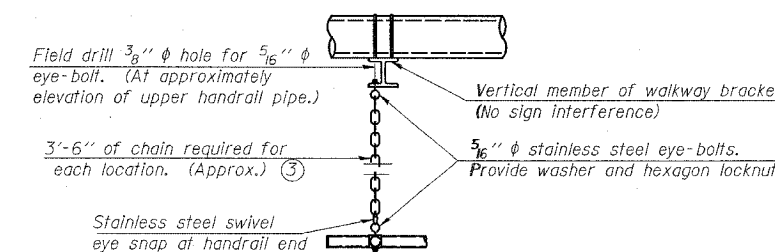
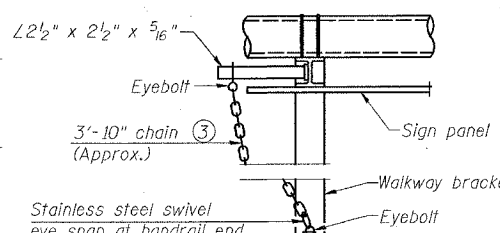
- Field cut ends of light support channels shall be free of burrs or hazardous projections and coated with zinc-rich primer or equivalent.



**FRONT ELEVATION**



**ELEVATION AT HANDRAIL JOINT** ④



**CANTILEVER SIGN STRUCTURES  
HANDRAIL DETAILS  
ALUMINUM TRUSS & STEEL POST**

FAI ROUTE 64  
SECTION 95-(5,6)RS-1  
WASHINGTON COUNTY

NUMBER	REVISION	DATE