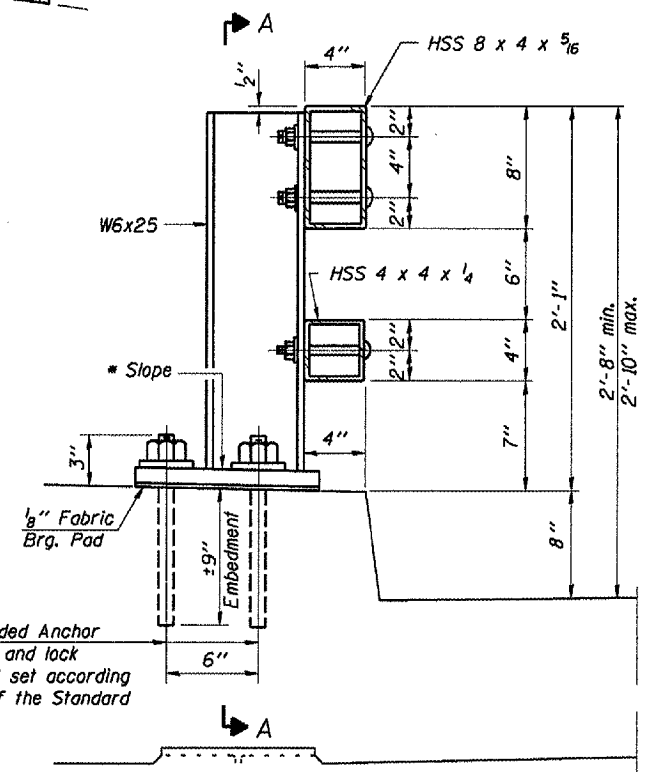


STATE OF ILLINOIS
DEPARTMENT OF TRANSPORTATION

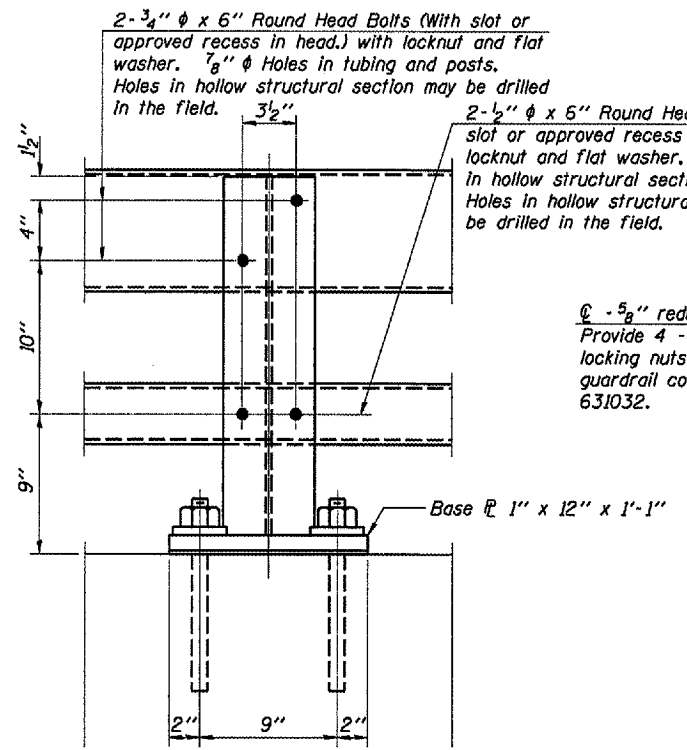
ROUTE NO.	SECTION	COUNTY	TOTAL SHEETS	SHEET NO.
FAP 332		WHITE	13	13
FED. ROAD DIST. NO. 7	ILLINOIS	FED. AID PROJECT NO.		

* D9 CM BRIDGE REPAIR FY 08-1
CONTRACT NO. 78015

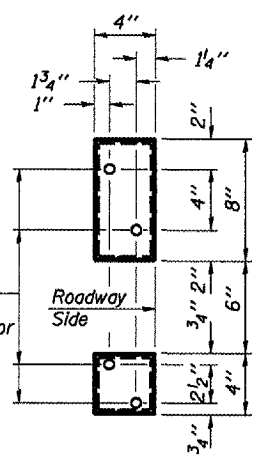
* Cut bottom end of post to curb slope.



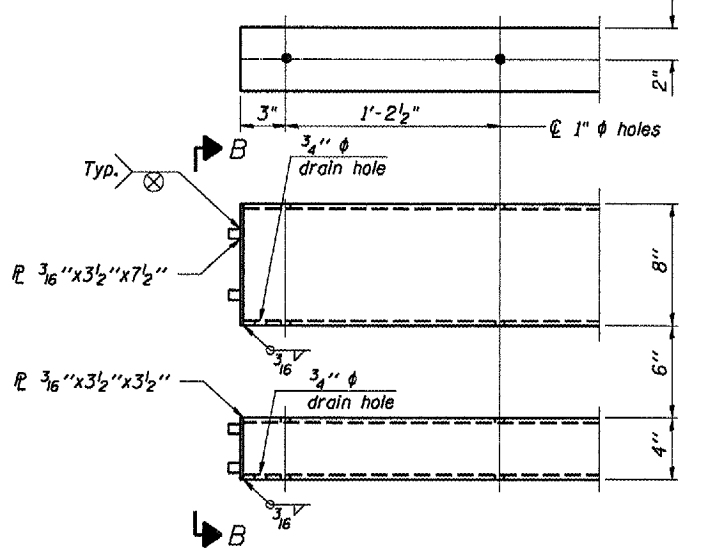
SECTION AT RAIL POST



SECTION A-A

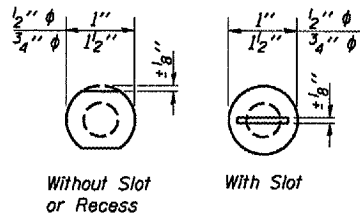


VIEW B-B

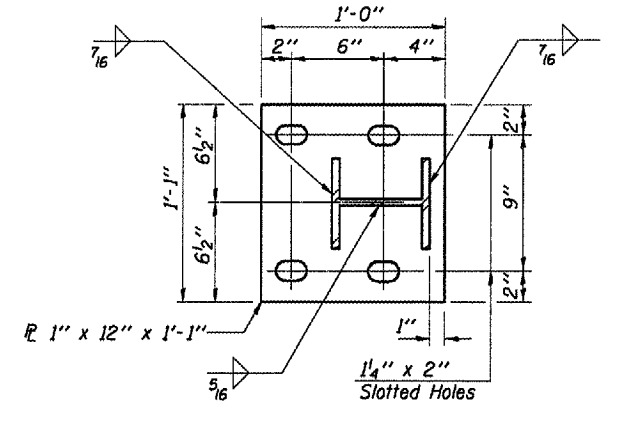


END OF RAIL DETAILS

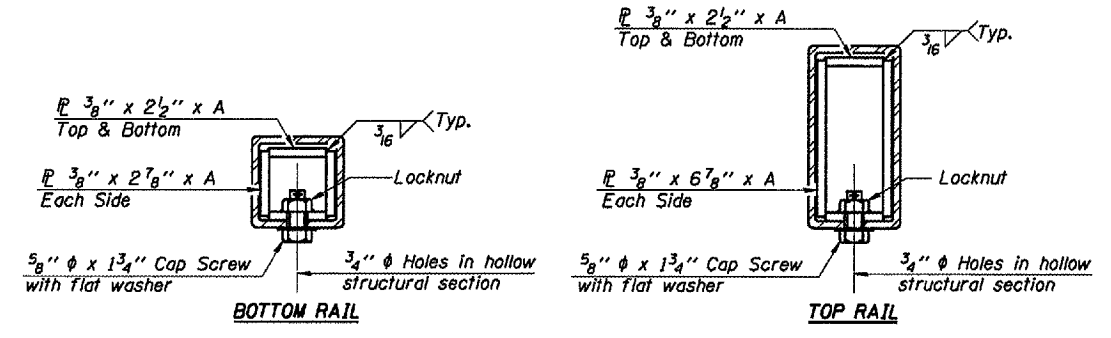
Notes:
All field drilled holes shall be coated with an approved zinc rich paint before erection.
Posts shall not be located closer than 1'-3" to an existing bridge expansion joint or end of bridge.
Steel Bridge Rail expansion joint shall be provided between any two (2) posts which span a bridge expansion joint. Bolts located at expansion joint shall be provided with locknuts and shall be tightened only to a point that will allow railing movement.
Provide one 1/8" and two 1/16" steel shims for 25% of the posts. Shims shall be similar to base plates in size and holes.
All steel rail elements shall be galvanized according to Article 509.05 of the Standard Specifications.



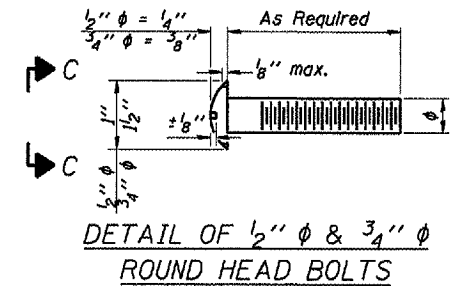
VIEW C-C



BASE PLATE DETAIL



SECTIONS AT RAIL SPLICE



DETAIL OF 1/2" & 3/4" ROUND HEAD BOLTS

(6'-3" Maximum Post Spacing)
See post spacing Sheet 10 of 13.

PLAN-BOTT. SPLICE RAIL
TYPICAL

RAIL SPLICE CONNECTION
AT EXPANSION JT.

BILL OF MATERIAL

Item	Unit	Quantity
Steel Railing, Type 2399	Foot	156'-0"

SPLICE DIMENSIONS

T	D	A	B	C	E
≤ 4"	2 1/2"	1'-8"	2"	4"	2 1/2"
> 4" ≤ 6 1/2"	3 3/4"	2'-0"	2 1/2"	5 1/2"	3 1/2"
> 6 1/2" ≤ 9"	5"	2'-4"	3 1/2"	6 1/2"	9"
> 9" ≤ 13"	7"	2'-10"	4 1/2"	8 1/2"	11"
Rail Splice	1/4"	1'-8"	2"	4"	—

T = Total movement at expansion joint as shown on the design plans.

STEEL RAILING, TYPE 2399